



Rewarding Learning

General Certificate of Secondary Education
2012

Centre Number

71	
----	--

Candidate Number

--

Science: Single Award (Modular)

Staying Alive
Module 1
Foundation Tier
[GSC11]



MONDAY 12 NOVEMBER 2012, AFTERNOON

TIME

45 minutes.

INSTRUCTIONS TO CANDIDATES

Write your Centre Number and Candidate Number in the spaces provided at the top of this page.
Write your answers in the spaces provided in this question paper.
Answer **all seven** questions.

INFORMATION FOR CANDIDATES

The total mark for this paper is 45.
Figures in brackets printed down the right-hand side of pages indicate the marks awarded to each question or part question.

For Examiner's use only	
Question Number	Marks
1	
2	
3	
4	
5	
6	
7	

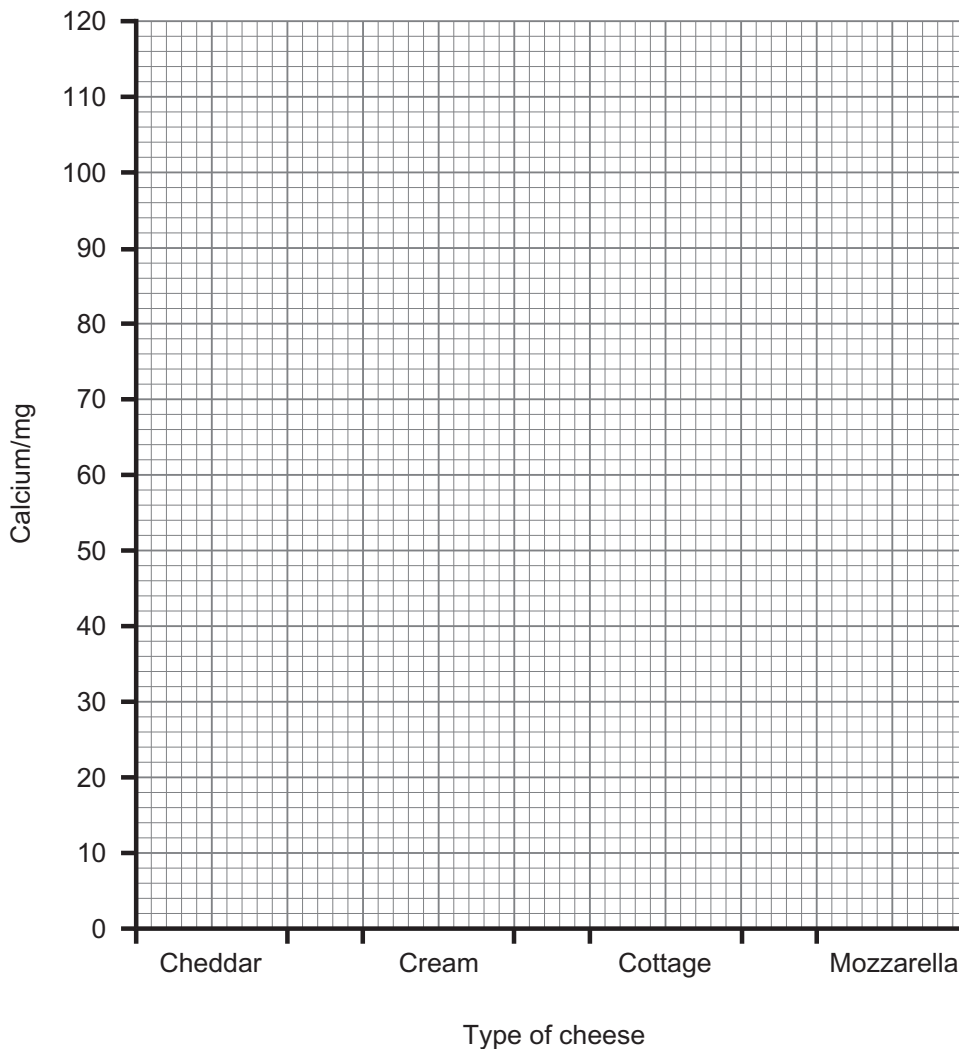
Total Marks	
--------------------	--



1 (a) The table below shows the iron and calcium content of different types of cheese.

Type of cheese	Iron /mg	Calcium /mg
Cheddar	0.1	100
Cream	1.6	20
Cottage	3.9	70
Mozzarella	2	110

(i) Draw a bar chart showing the **calcium** content of these cheeses on the grid below.



[2]

Examiner Only	
Marks	Remark

- 2 (a) The statements below show changes that can reduce the risk of having a heart attack.

Circle the statements that are lifestyle changes.

reduce salt intake

reduce time spent watching television

reduce stress

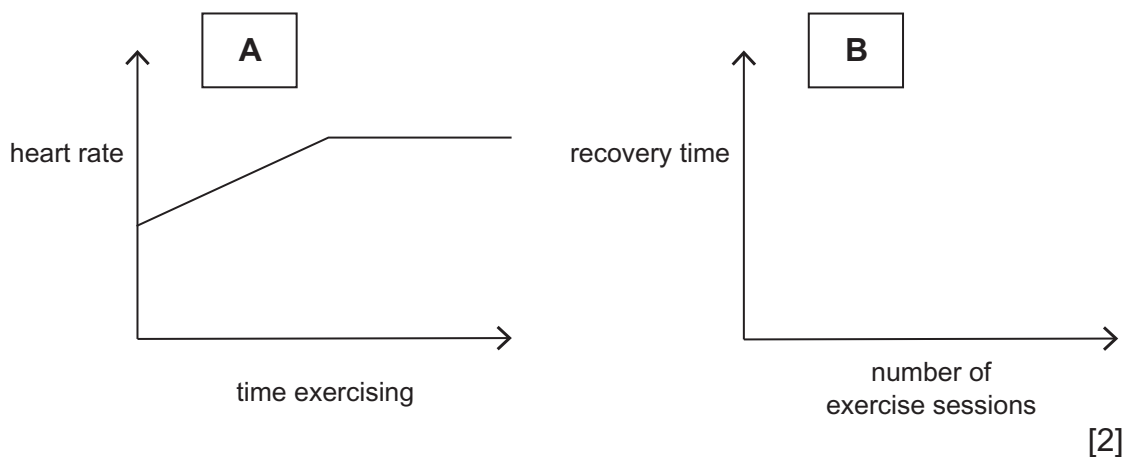
reduce cholesterol levels

stop smoking

reduce intake of fats

[3]

- (b) Graph **A** below shows how exercise affects heart rate. Sketch a graph on the axes **B** below to show how the number of exercise sessions affects the **recovery time** of the heart.



[2]

- (c) Complete the sentence below.

Choose from:

wholewheat : protein : fibre : breakfast

People with constipation are told to increase their intake

of _____ cereals because they contain a lot

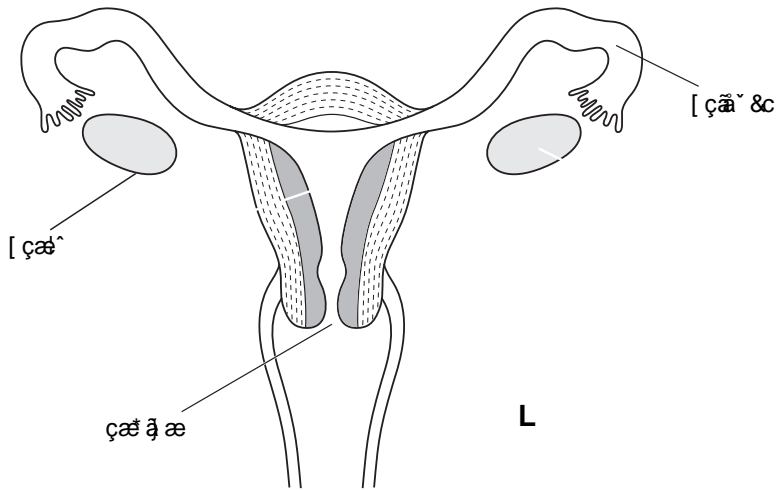
of _____.

[2]

Examiner Only	
Marks	Remark

BLANK PAGE
(Questions continue overleaf)

3 (a) The diagram shows the female reproductive system.



© Focus Educational Software

(i) Draw a line from **X** to the part that receives sperm first. [1]

(ii) The statements below describe what happens to the ovum (egg) from release to implantation but they are in the wrong order.

- A** enters the oviduct
- B** embeds in uterus
- C** enters uterus
- D** released from ovary
- E** is fertilised

Using the letters **A**, **B**, **C**, **D** and **E** place the statements in the correct order below.

The first has been done for you.

 D _____ [2]

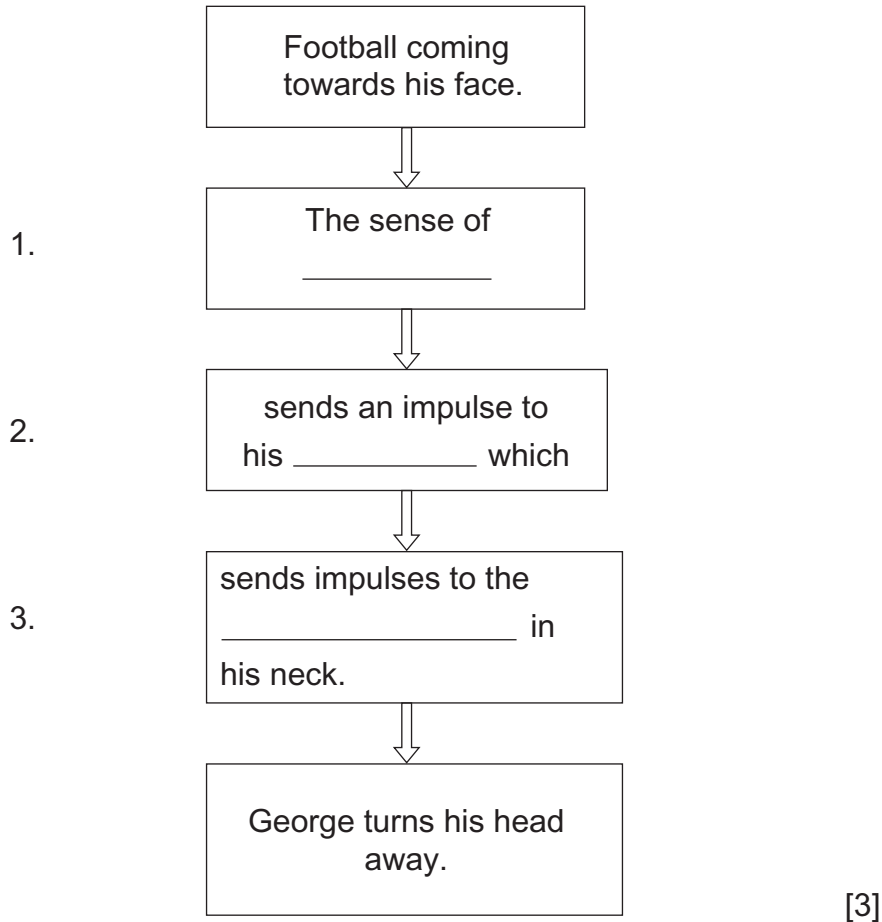
Examiner Only	
Marks	Remark

Examiner Only	
Marks	Remark

4 (a) The nose is an example of a sense organ. Name **two** other sense organs.

1. _____
2. _____ [2]

(b) George sees a football coming towards his face and wants to avoid it hitting him. Complete the flowchart below at boxes 1, 2 and 3 to show how a voluntary response turns his head away.

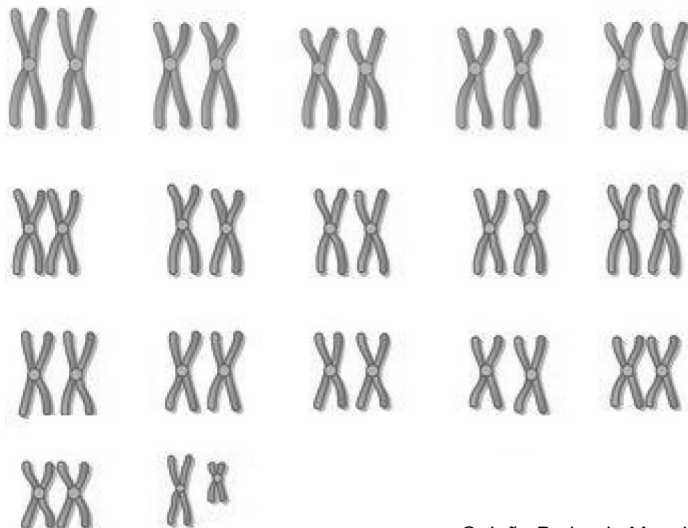


(c) Complete the following sentence.

The central nervous system is made up of the _____
and the _____ [2]

BLANK PAGE
(Questions continue overleaf)

5 (a) The diagram shows all the chromosomes in the nucleus of a cell.



© João Pedro de Magalhães
<http://jp.senescence.info/thoughts/karyotype.gif>

(i) How many chromosomes are in this cell?

_____ [1]

(ii) Explain why this cell cannot be:

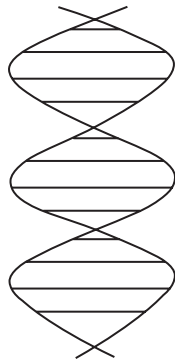
human.

a sex cell.

_____ [2]

Examiner Only	
Marks	Remark

(b) Chromosomes are made up of a **chemical** molecule. The diagram shows its double helix shape.



(i) What is the name of this **chemical**?

_____ [1]

(ii) Give a variation between humans which would be decided by chromosomes.

Choose from:

dyed blonde hair : **scar on face** : **eye colour**

_____ [1]

Examiner Only

Marks

Remark

THIS IS THE END OF THE QUESTION PAPER

Permission to reproduce all copyright material has been applied for.
In some cases, efforts to contact copyright holders may have been unsuccessful and CCEA
will be happy to rectify any omissions of acknowledgement in future if notified.