



GCSE

4445/01

RELIGIOUS STUDIES

SPECIFICATION A

UNIT 5: Christian Philosophy and Ethics

A.M. THURSDAY, 11 June 2015

1 hour 45 minutes plus your additional time allowance

Surname _____

Other Names _____

Centre Number _____

Candidate Number 0 _____

For Examiner's use only		
Question	Maximum Mark	Mark Awarded
1.	24	
SPaG	5	
2.	24	
3.	24	
4.	24	
Total	101	

INSTRUCTIONS TO CANDIDATES

Use black ink or black ball-point pen or your usual method.

Write your name, centre number and candidate number in the spaces on the front cover.

Answer ALL questions.

Write your answers in the spaces provided.

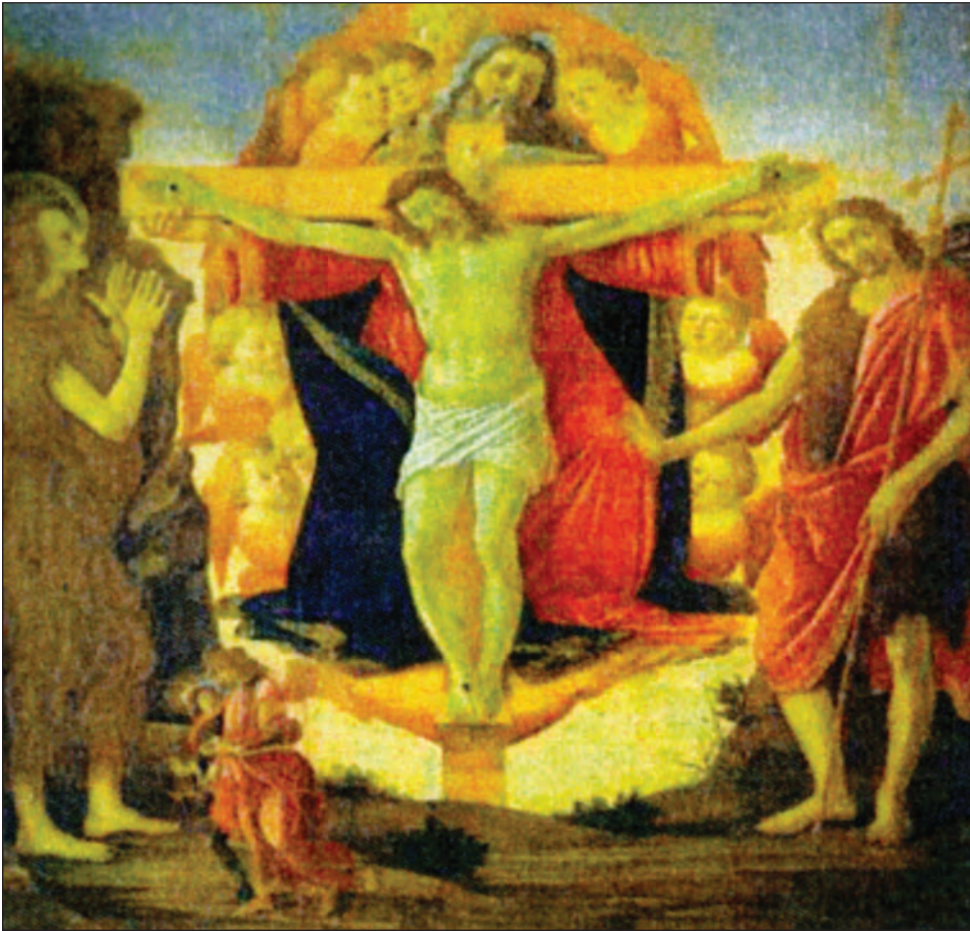
If you run out of space in this question-and-answer booklet you may use continuation sheets. Number the questions clearly and enclose your sheets in this question-and-answer booklet.

INFORMATION FOR CANDIDATES

The number of marks is given in brackets at the end of each question or part-question.

You are reminded that assessment will take into account the Quality of Written Communication used in your answers that involve extended writing (questions 1(e), 2(e), 3(e) and 4(e)).

In addition, your ability to spell, punctuate and use grammar accurately will be assessed in question 1(e).



THE CRUCIFIXION



HUMAN BEINGS
