

Oxford Cambridge and RSA Examinations
General Certificate of Secondary Education

RELIGIOUS STUDIES A (WORLD RELIGIONS)
PAPER 3 - Buddhism

2303/1

Specimen Paper 2003

Additional materials: Answer paper
Candidates answer on separate answer paper provided.

TIME 1 hour 30 minutes

INSTRUCTIONS TO CANDIDATES

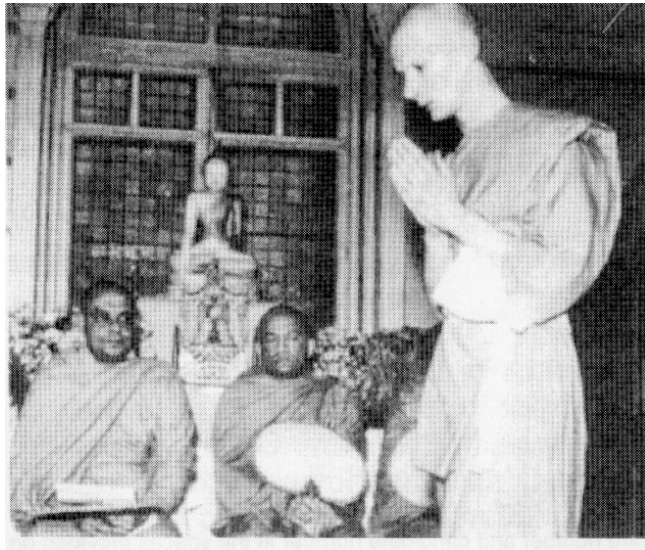
- Answer Question 1 and **two** other questions.
- Write your answers, in blue or black ink, on the answer paper provided.
- Read each question carefully and make sure you know what you have to do before starting your answer.

INFORMATION FOR CANDIDATES

- The number of marks is given in brackets [] at the end of each question or part question.
- The total number of marks for this paper is 64.
- You will be awarded up to 4 marks in Question 1 for the quality of written communication.

Answer Question 1 and **two** other questions.

1



- (a) Describe the ceremony in which a person becomes a Buddhist monk or nun. [8]
- (b) Explain how following the lifestyle of a monk or nun might help a Buddhist become enlightened. [7]
- (c) 'There is no need for monks and nuns in modern society.'

Do you agree? Give reasons to support your answer and show that you have thought about different points of view. You must refer to Buddhism in your answer. [5]

- 2 (a) Describe how Buddhists celebrate Wesak. [8]
- (b) How and why might the life of a Buddhist be changed by going on a pilgrimage? [7]
- (c) 'Peace and happiness are to be found within your mind, so going on pilgrimage is unnecessary.'

Do you agree? Give reasons to support your answer and show that you have thought about different points of view. You must refer to Buddhism in your answer. [5]

- 3 (a) What are the main beliefs of Tibetan Buddhism? [8]
- (b) Explain how belief in rebirth might affect the life of a Tibetan Buddhist. [7]
- (c) 'In a religion, all people should worship in the same way.'

Do you agree? Give reasons to support your answer and show that you have thought about different points of view. You must refer to Buddhism in your answer. [5]

- 4 (a) Describe the use of rupas (statues of the Buddha) in Buddhist puja (worship). [8]
- (b) Explain how puja (worship) might affect the daily life of a Buddhist. [7]
- (c) 'Being religious doesn't make you a good person.'

Do you agree? Give reasons to support your answer and show that you have thought about different points of view. You must refer to Buddhism in your answer. [5]

- 5 (a) What is the importance of the First Precept (non-violence) for Buddhists? [8]
- (b) Explain the difficulties which might be faced by a Buddhist who wishes to show a commitment to the First Precept. [7]
- (c) 'A caring person should be a vegetarian.'

Do you agree? Give reasons to support your answer and show that you have thought about different points of view. You must refer to Buddhism in your answer. [5]

