

Surname	Centre Number	Candidate Number
Other Names		0



GCSE

4431/01



S16-4431-01

PSYCHOLOGY

UNIT 1: Social, Biological and Developmental Psychology

P.M. MONDAY, 6 June 2016

1 hour 30 minutes

For Examiner's use only		
Question	Maximum Mark	Mark Awarded
1.	10	
2.	14	
3.	20	
4.	10	
5.	12	
6.	14	
Total	80	

4431
010001

INSTRUCTIONS TO CANDIDATES

Use black ink or black ball-point pen.

Write your name, centre number and candidate number in the spaces at the top of this page.

Answer **all** questions.

Write your answers in the spaces provided in this booklet.

INFORMATION FOR CANDIDATES

The number of marks is given in brackets at the end of each question or part-question.

You are reminded that assessment will take into account the quality of written communication used in answers that involve extended writing (questions **1(b)**, **3(d)** and **5(c)**).

Answer all questions.

1. (a) Draw **four** lines from the terms on the left to the correct definition on the right.

[4]

(i) Clairvoyance	The sending of information from one mind to another.
(ii) Telepathy	Obtaining information which is not available by the normal five senses.
(iii) Precognition	The ability to perceive the future before it happens.
(iv) Psychokinesis	The ability of an individual to influence an object without direct intervention.

(b) Discuss the arguments against Extra Sensory Perception (ESP).

[6]

.....

.....

.....

.....

.....

.....

.....

.....

.....

.....

.....

.....

.....

.....

.....

.....

.....

.....

.....

.....

.....

.....

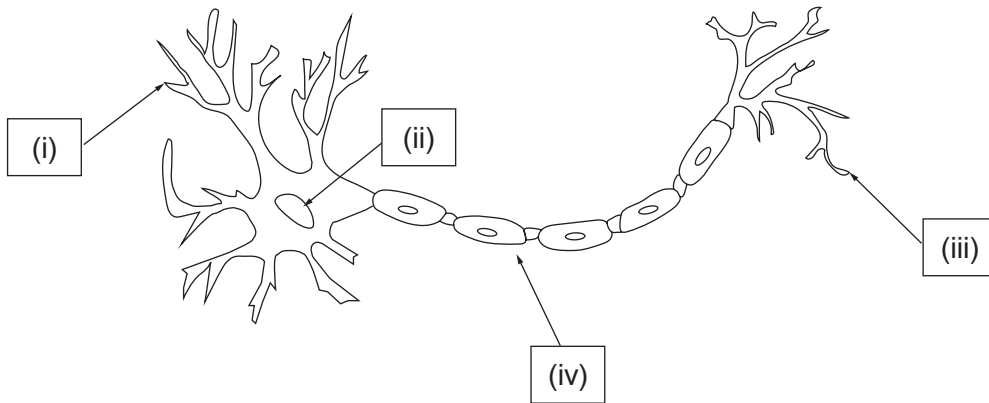
.....

4431
010003

10

2. (a) Label the parts of the neuron below.

[4]



(i) (ii)
(iii) (iv)

(b) Describe how the functions of the frontal lobe affect human behaviour.

[4]

.....
.....
.....
.....
.....
.....
.....
.....
.....
.....
.....
.....
.....
.....
.....
.....
.....
.....
.....
.....
.....

(c) Outline how the following techniques are used to measure brain action:

(i) Positron Emission Tomography (PET Scan). [3]

.....

.....

.....

.....

.....

.....

.....

.....

.....

.....

.....

(ii) Event Related Potentials (ERP). [3]

.....

.....

.....

.....

.....

.....

.....

.....

.....

.....

.....

4431
010005

3. (a) Elliott (1977) conducted a study into the causes of prejudice. Choose appropriate words from the box below to complete a description of Elliott's procedure. [6]

privileges	laboratory	reversed	split	field
happy	intelligent	stereotype	badly	

Elliott conducted a type of experiment. Elliott divided her class of primary school children into two groups, those with blue eyes and those with brown eyes. Elliott told the blue eyed group that they were more and would be given extra The blue eyed group behaved according to their and treated the brown eyed children The brown eyed children became angry and depressed. The next day Elliott told the class that she had made a mistake and the procedure.

- (b) Outline what is meant by the term 'prejudice'. [2]

.....

.....

.....

.....

- (c) Give **one** example of the following types of discrimination that may occur in everyday life:

- (i) Sexism. [2]

.....

.....

.....

.....

- (ii) Homophobia. [2]

.....

.....

.....

.....

(iii) Racism. [2]

.....
.....
.....
.....

(d) Discuss ways of overcoming prejudice. [6]

.....
.....
.....
.....
.....
.....
.....
.....
.....
.....
.....
.....
.....
.....
.....
.....
.....
.....
.....
.....
.....

4431
010007

4. Helen and Christopher were watching an action film. In the film a police officer shot a gangster with a gun. When the film finished Helen turned to Christopher and pretended to shoot him.

(a) Describe the type of learning that best explains Helen’s behaviour. [2]

.....

.....

.....

.....

(b) Outline **one** difference between classical conditioning and operant conditioning. [2]

.....

.....

.....

.....

(c) Outline **one** similarity between classical conditioning and operant conditioning. [2]

.....

.....

.....

.....

5.



Bellarmino University

(a) Describe the procedures of Lorenz's (1935) study.

[4]

.....

.....

.....

.....

.....

.....

.....

.....

.....

.....

(b) Outline **one** ethical issue in Harlow and Harlow's (1965) study.

[2]

.....

.....

.....

.....

6. (a) Identify **three** features of Walster et al's (1966) procedure. [3]

.....

.....

.....

.....

.....

.....

(b) (i) Outline **one** strength of the three factor theory of love. [2]

.....

.....

.....

.....

(ii) Outline **one** weakness of the three factor theory of love. [2]

.....

.....

.....

.....

(c) Briefly describe the social exchange theory of relationship formation. [3]

.....

.....

.....

.....

.....

.....

(d) Outline **two** negative features of the social exchange theory of relationship formation.

[4]

Examiner
only

.....

.....

.....

.....

.....

.....

.....

.....

.....

END OF PAPER

14

BLANK PAGE

BLANK PAGE