

Surname	Centre Number	Candidate Number
Other Names		0



GCSE

4413/01

**MUSIC
UNIT 3**

A.M. MONDAY, 2 June 2014

1 hour 30 minutes approximately

**Suitable for Modified
Language Candidates**

For Examiner's use only		
Question	Maximum Mark	Mark Awarded
1.	8	
2.	20	
3.	12	
4.	8	
5.	9	
6.	15	
7.	20	
8.	8	
Total	100	

INSTRUCTIONS TO CANDIDATES

Use black ink or black ball-point pen. Do not use gel pen.
Do not use correction fluid.

Write your name, centre number and candidate number in the spaces at the top of this page.

Answer **all** questions.

Answers to all questions, including rough work, should be made in the spaces provided in this answer book.

Answers in music notation may be written in pencil or ink.

There are **two** extra continuation pages at the end of this booklet.

INFORMATION FOR CANDIDATES

The Appraising test is continuous and consists of **8** questions, namely seven questions on the areas of study and one evaluative question.

Full instructions are included on the compact discs which will be played to you.

The maximum mark for this paper is **100**.

The allocation of marks is given at the end of each question or part-question.

At the end of the examination this answer book must be handed to the invigilator.



BLANK PAGE

**PLEASE DO NOT WRITE
ON THIS PAGE**



1. You will hear **four** vocal extracts. Each extract will be played **once** only.

Identify:

- (i) the **tonality** as either major or minor
- (ii) the **type** of composition, choosing from the list below.

You now have 30 seconds to read the question before the playing of the first extract.

**Cerdd dant / Hymn tune / Operatic aria / Musical /
Country and Western / Art song / Folk song / Reggae**

(Each correct answer = 1 mark)

[8]

Extract	Tonality	Type of composition
Extract 1		
Extract 2		
Extract 3		
Extract 4		



2. Here are two versions of *Rejoice greatly* from the Oratorio ‘The Messiah’ by Handel. Each version will be played **three** times. Compare the two versions using the headings below. Version 1 is the original version. **Credit will only be given for answers written within the appropriate boxes.**

(Each correct observation = 1 mark)
[20]

Version 1	Version 2
<p>(i) <u>Instruments/Voices</u></p> <p>(a) Melody</p> <p>.....</p> <p>(b) Accompaniment</p> <p>.....</p>	<p>(i) <u>Instruments/Voices</u></p> <p>(a) Melody (2)</p> <p>.....</p> <p>(b) Accompaniment (4)</p> <p>.....</p>
<p>(ii) <u>Duration</u></p> <p>(a) Tempo</p> <p>.....</p> <p>(b) Time signature</p> <p>.....</p>	<p>(ii) <u>Duration</u> (4)</p> <p>(a) Tempo</p> <p>.....</p> <p>(b) Time signature</p> <p>.....</p>
<p>(iii) <u>Other points of interest</u></p> <p>.....</p> <p>.....</p> <p>.....</p> <p>.....</p> <p>.....</p> <p>.....</p> <p>.....</p> <p>.....</p> <p>.....</p> <p>.....</p>	<p>(iii) <u>Other points of interest</u> (10)</p> <p>.....</p> <p>.....</p> <p>.....</p> <p>.....</p> <p>.....</p> <p>.....</p> <p>.....</p> <p>.....</p> <p>.....</p> <p>.....</p>



3. Here are **four** extracts from the world of Jazz. Each extract will be played **once** only with a short pause between each playing.

For each extract tick only **one** solo instrument, **one** accompanying instrument(s) and **one** musical style – a maximum of three (✓) for each extract.

You now have 30 seconds to read the question before the playing of the first extract.

(Each correct answer = 1 mark)

[12]

		Extract A	Extract B	Extract C	Extract D
Solo Instrument	Saxophone				
	Trombone				
	Violin				
	Trumpet				
Accompanying Instrument(s)	Piano				
	Clarinet				
	Saxophones				
	Guitar				
Musical Style	Traditional Jazz				
	Modern Jazz				
	Big band Jazz				



4. Here are **two** versions of *March* from the 'Nutcracker Suite' by Tchaikovsky. Each version will be played **twice**. Version **1** is the original version. **[8]**

(a) Note **six** ways in which the **sound, instruments and/or style** of the original version have been changed in Version **2**.

(Each correct observation = 1 mark)
(6)

1.

.....

2.

.....

3.

.....

4.

.....

5.

.....

6.

.....

(b) State which version you prefer.

Version

Give **two** brief **positive, musical** reasons for your choice. (2)

1.

.....

2.

.....



5. Here is an extract from an orchestral composition *Prélude* from the 'Te Deum' by Charpentier. It will be played **three** times. **Underline** the correct answer in questions (a) – (f).

You have 30 seconds to read the question before the first playing of the extract.

[9]

- (a) The piece is **played** by a(n):

String Orchestra / **Brass ensemble** / **Orchestra** (1)

- (b) Which of the following best describes the **texture** of the opening of this extract?

Homophonic / **Monophonic** / **Polyphonic** (1)

- (c) Indicate the **period** in which this music was composed:

Baroque / **Classical** / **21st century** (1)

- (d) Which of the following three **rhythms** is played at the beginning of the extract?

 /  /  (1)

- (e) The most suitable **tempo** for the extract is:

Adagio  = 60 / **Andante**  = 90 / **Allegro**  = 120 (1)

- (f) Which of the following correctly defines the **structure** of the extract?

AABB **ABAB** **AABA** **ABBA** (1)

- (g) State **three** ways in which the 'B' section differs from the 'A' section. (3)

(Each correct answer = 1 mark)

- (i)
- (ii)
- (iii)



6. The following extract will be played **four** times. There will be a **one** minute silence after the final playing for you to complete your answers. The melody is printed below.

You have 1 minute to read the question before the first playing of the extract.

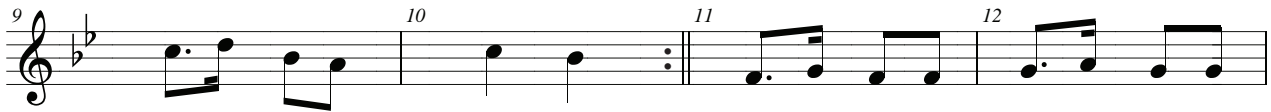
[15]



Time Signature

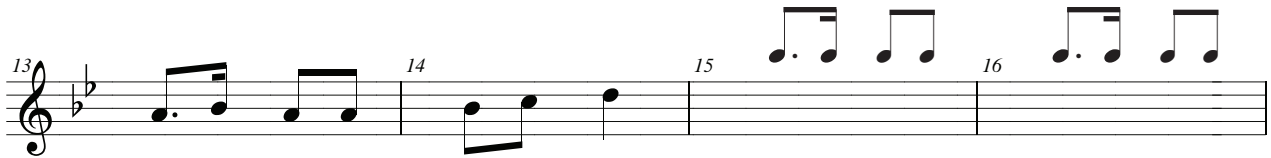


Cadence



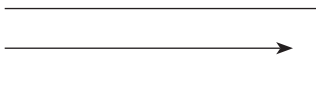
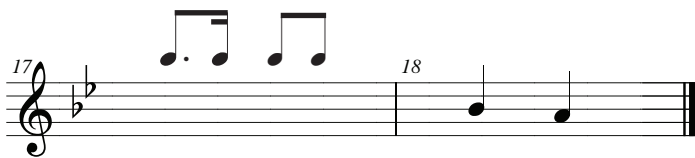
Cadence

Compositional



device

← Missing notes (pitch) →



(a) At the beginning of the extract insert the **time signature**. (1)

(b) Name the **cadences** in bars 4/5 and 9/10. (2)

Bars 4/5:

Bars 9/10:

(c) Name the **compositional device** used in bars 11-13. (1)

Compositional device:

(d) Complete the **melody** in bars 15-17 by writing in the missing notes (pitch).
The rhythm has been provided for you. (6)

(e) Name the **solo** instrument playing the melody in bars 11 – 18. (2)

Solo instrument:

(f) What **technical term** describes the way the lower strings are played in the extract? (1)

Technical term:

(g) Give the full name of the **key** of the extract. (2)

Key:

4413
01009



7. Here is part of the song, *All you need is love*, written by John Lennon and Paul McCartney. It was recorded by the Beatles in 1967. It will be played **four** times with a 30 second silence between each playing and a further 15 minutes after the final playing for you to complete your answer.

Write about the music, commenting on anything you hear. **You should relate your comments to appropriate line numbers** considering the features listed below:

- Instruments
- Voices
- Melody
- Rhythm
- Texture
- Form
- Style
- Harmony.

(Each correct observation = 1 mark)
[20]

You have 30 seconds to consider the question before the first playing of the extract. You may make rough notes on pages 10 and 11, but begin your answer on page 12.

Here are the words:

1. Love, love, love. Love, love, love. Love, love, love.

2. There's nothing you can do that can't be done.

3. Nothing you can sing that can't be sung.



4. Nothing you can say, but you can learn how to play the game. It's easy.

5. Nothing you can make that can't be made.

6. No one you can save that can't be saved.

7. Nothing you can do, but you can learn how to be you in time. It's easy.

8. All you need is love. All you need is love.

9. All you need is love, love, love is all you need.

10. Love, love, love. Love, love, love. Love, love, love.



Begin your answer for question 7 here:

A large rectangular area containing 25 horizontal dotted lines for writing an answer.



Examiner
only

A large rectangular area with horizontal dotted lines for writing.



Examiner
only

A large rectangular area with a solid top and bottom border and a dotted line running horizontally across the entire width, providing a space for writing or marking.



Area with horizontal dotted lines for writing.

END OF PAPER



BLANK PAGE

**PLEASE DO NOT WRITE
ON THIS PAGE**



BLANK PAGE

**PLEASE DO NOT WRITE
ON THIS PAGE**

