

OXFORD CAMBRIDGE AND RSA EXAMINATIONS

GCSE

B353/01

MUSIC

Creative Task

TO BE COMPLETED BETWEEN 5TH MARCH AND 5TH MAY 2015

JUNE 2015 SERIES

DURATION: 45 minutes

plus your additional time allowance

MODIFIED ENLARGED

READ INSTRUCTIONS OVERLEAF

INSTRUCTIONS TO CANDIDATES

You must create a piece of music using ONE of the following stimuli:

- (a) A rhythmic phrase;**
- (b) A note pattern;**
- (c) A melodic phrase;**
- (d) A chord sequence;**
- (e) A set of words;**
- (f) A sequence of events.**

The complete stimulus must be used in your piece.

You may ask the teacher to play or read any or all of the stimuli ONCE.

Choose ONE stimulus. You may ask the teacher to play or read your chosen stimulus TWICE.

You may ask the teacher to record your chosen stimulus for reference during your preparation.

You have 45 minutes to prepare and communicate your composition in ONE of the following ways:

- Live performance;**
- ICT;**
- Written notation.**

Hand this paper to the teacher at the end of the task.

INFORMATION FOR CANDIDATES

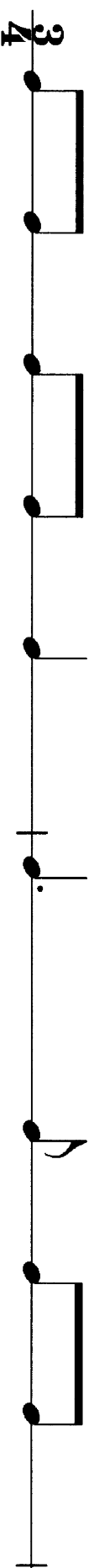
The total number of marks available for this paper is 40. This is 20% of the total mark for this qualification.

Any blank pages are indicated.

You must create a piece of music using ONE of the following stimuli. The COMPLETE stimulus must be used in your piece.

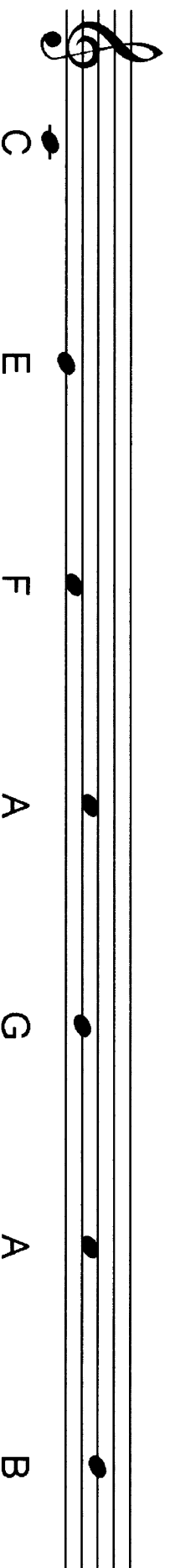
(a) Rhythmic Phrase

Create a rhythmic or melodic piece.



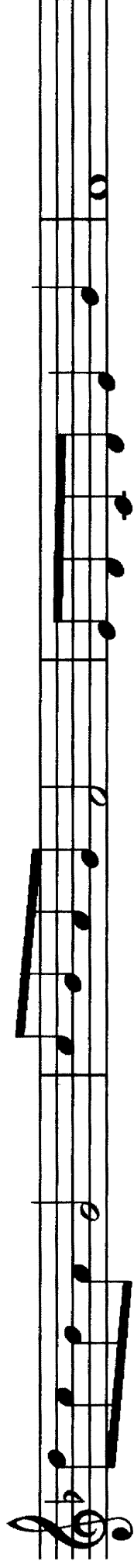
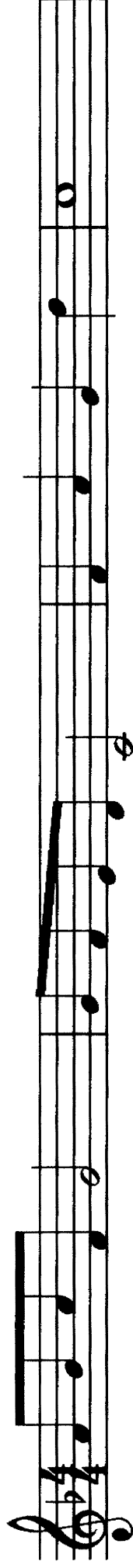
(b) Note Pattern

Create a melodic piece.




(c) Melodic Phrase

Create a second part (descant or bass line) to go with the eight bars given. You may extend the piece if you wish.

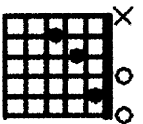


(d) Chord Sequence

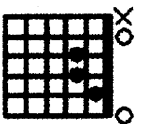
Create a chordal piece, a melodic piece, or a combination of both.




G



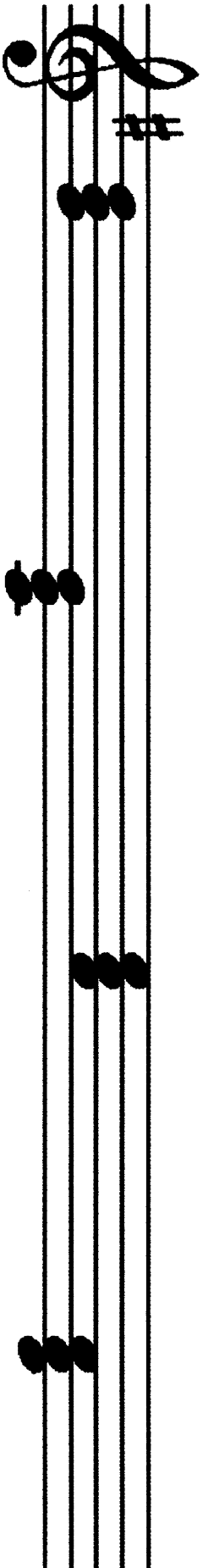
C



A_m



D



G C A_m D

(e) Set of Words

Create a song that uses all the words.

Item removed due to third party copyright restrictions

(f) Sequence of Events

Create a piece of music to describe this sequence of events:

It is a bright day in the peaceful countryside. Beside a field runs a railway track. A train approaches and thunders past at high speed. It disappears into the distance.

Copyright Information

OCR is committed to seeking permission to reproduce all third-party content that it uses in its assessment materials. OCR has attempted to identify and contact all copyright holders whose work is used in this paper. To avoid the issue of disclosure of answer-related information to candidates, all copyright acknowledgements are reproduced in the OCR Copyright Acknowledgements Booklet. This is produced for each series of examinations and is freely available to download from our public website (www.ocr.org.uk) after the live examination series.

If OCR has unwittingly failed to correctly acknowledge or clear any third-party content in this assessment material, OCR will be happy to correct its mistake at the earliest possible opportunity.

For queries or further information please contact the Copyright Team, First Floor, 9 Hills Road, Cambridge CB2 1GE.

OCR is part of the Cambridge Assessment Group; Cambridge Assessment is the brand name of University of Cambridge Local Examinations Syndicate (UCLES), which is itself a department of the University of Cambridge.

