

OXFORD CAMBRIDGE AND RSA EXAMINATIONS
General Certificate of Secondary Education

MUSIC

1919/2

COMPONENT 2:

Terminal Task: Respond and Communicate

27 FEBRUARY – 5 MAY 2006

(Time for opening: 1 working day before the tests are to be administered)

TIME 30 minutes

CANDIDATE INSTRUCTIONS

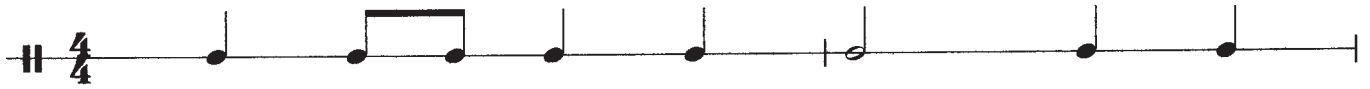
- You should compose a melody using **one** of the following ideas:
 - (a) Rhythmic Phrase
 - (b) Note Pattern
 - (c) Chord Sequence.
- You may ask the teacher to play the ideas once.
- Choose **one** idea. You may then ask the teacher to play the idea **twice** (if requested, the teacher will record your chosen idea for you).
- You have twenty five minutes to prepare your composition. At the end of this time you will have five minutes to communicate your composition in **one** of the following ways:
 - 1 Live performance
 - 2 ICT
 - 3 Written notation.
- Hand this sheet to the teacher at the end of the task.

INFORMATION FOR CANDIDATES

- The total number of marks available for this paper is 15. This is 15% of the total mark for this qualification.

This question paper consists of 2 printed pages.

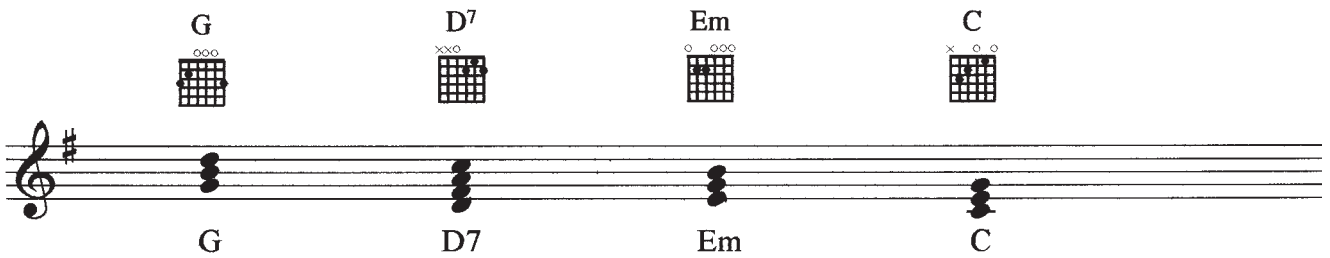
(a) Rhythmic Phrase



(b) Note Pattern



(c) Chord Sequence



Permission to reproduce items where third-party owned material protected by copyright is included has been sought and cleared where possible. Every reasonable effort has been made by the publisher (OCR) to trace copyright holders, but if any items requiring clearance have unwittingly been included, the publisher will be pleased to make amends at the earliest possible opportunity.

OCR is part of the Cambridge Assessment Group. Cambridge Assessment is the brand name of University of Cambridge Local Examinations Syndicate (UCLES), which is itself a department of the University of Cambridge.