

Centre No.						Paper Reference						Surname	Initial(s)	
Candidate No.						5	5	0	8	/	8	B	Signature	

Paper Reference(s)

**5508/8B**

**Edexcel GCSE**

**Mathematics B – 1388**

Paper 8 – Section B (Calculator)

**Foundation Tier**

Module Test 1

Tuesday 7 November 2006 – Morning

Time for Section B: 25 minutes



Examiner's use only

--	--	--

Team Leader's use only

--	--	--

**Materials required for examination**

Ruler graduated in centimetres and millimetres, protractor, compasses, pen, HB pencil, eraser, calculator. Tracing paper may be used.

**Items included with question papers**

Nil

**Instructions to Candidates**

In the boxes above, write your centre number, candidate number, your surname, initials and signature. Check that you have the correct question paper.

Answer ALL the questions. Write your answers in the spaces provided in this question paper.

**You must NOT write on the formulae page. Anything you write on the formulae page will gain NO credit.**

If you need more space to complete your answer to any question, use additional answer sheets.

**Information for Candidates**

The marks for individual questions and the parts of questions are shown in round brackets: e.g. (2). This section has 6 questions. The total mark for this section is 19. The total mark for this paper is 38. There are 8 pages in this question paper. Any blank pages are indicated.

**Calculators may be used for Section B only.**

If your calculator does not have a  $\pi$  button, take the value of  $\pi$  to be 3.142 unless the question instructs otherwise.

**Advice to Candidates**

Show all stages in any calculations.

Work steadily through the paper. Do not spend too long on one question.

If you cannot answer a question, leave it and attempt the next one.

Return at the end to those you have left out.

This publication may be reproduced only in accordance with Edexcel Limited copyright policy. ©2006 Edexcel Limited.

Printer's Log. No.  
**N24923A**

W850/R1388/57570 6/6/6



*Turn over*

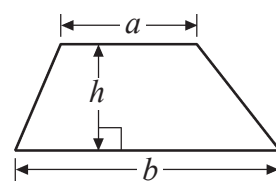
**edexcel**   
advancing learning, changing lives

**GCSE Mathematics 1387/8**

Formulae: Foundation Tier

**You must not write on this formulae page.  
Anything you write on this formulae page will gain NO credit.**

**Area of trapezium =  $\frac{1}{2}(a+b)h$**



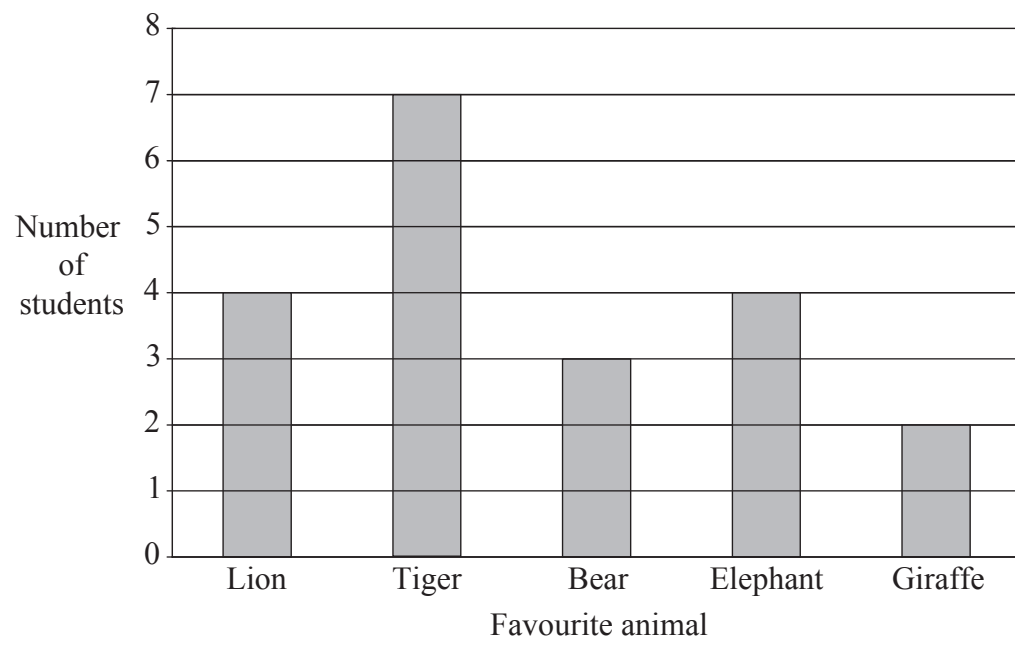
**SECTION B**

**Answer ALL SIX questions.**

**Write your answers in the spaces provided.**

**You must write down all stages in your working.**

1. Students in a class were asked to write down their favourite animal. The bar chart shows this information.



- (a) Which animal was the most popular?

.....  
**(1)**

- (b) Which two animals were equally popular?

..... and .....

**(1)**

- (c) Work out the **total** number of students in the class.

.....  
**(2)**

**(Total 4 marks)**

**Q1**



Leave  
blank

2. Joshua watches a film.  
The film is 2 hours 20 minutes long.

The film starts at 16 20

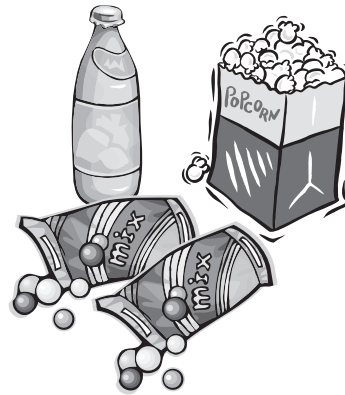
- (a) Work out the time the film ends.

Joshua buys

- 1 bottle of lemonade at £1.15  
2 bags of sweets at 42p each  
1 box of popcorn at 86p

He pays with a £10 note.

- (b) Work out how much change Joshua should get.



.....  
(2)

£ .....

(3)

(Total 5 marks)

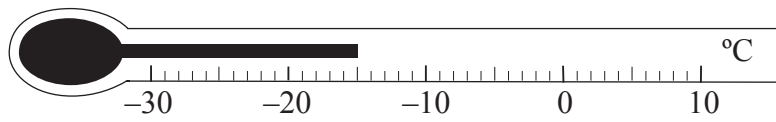
Q2



Leave blank

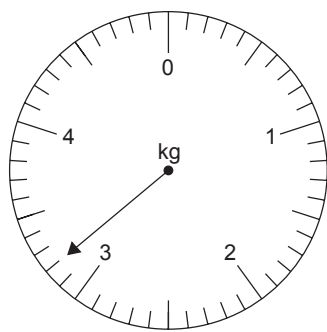
3. Write down the reading on each of these scales.

(i)



..... °C

(ii)



..... kg

(Total 2 marks)

Q3

4. (a) Simplify  $p + p + p + p$

.....  
(1)

(b) Simplify  $4 \times x \times y$

.....  
(1)

(c) Multiply out  $4(2f - 3)$

.....  
(1)

(Total 3 marks)

Q4



Leave  
blank

5. Here are the test scores of seven students.

1    3    3    7    8    9    11

(a) Write down the mode of the scores.

.....  
(1)

(b) Find the median score.

.....  
(1)

(c) Find the range of the scores.

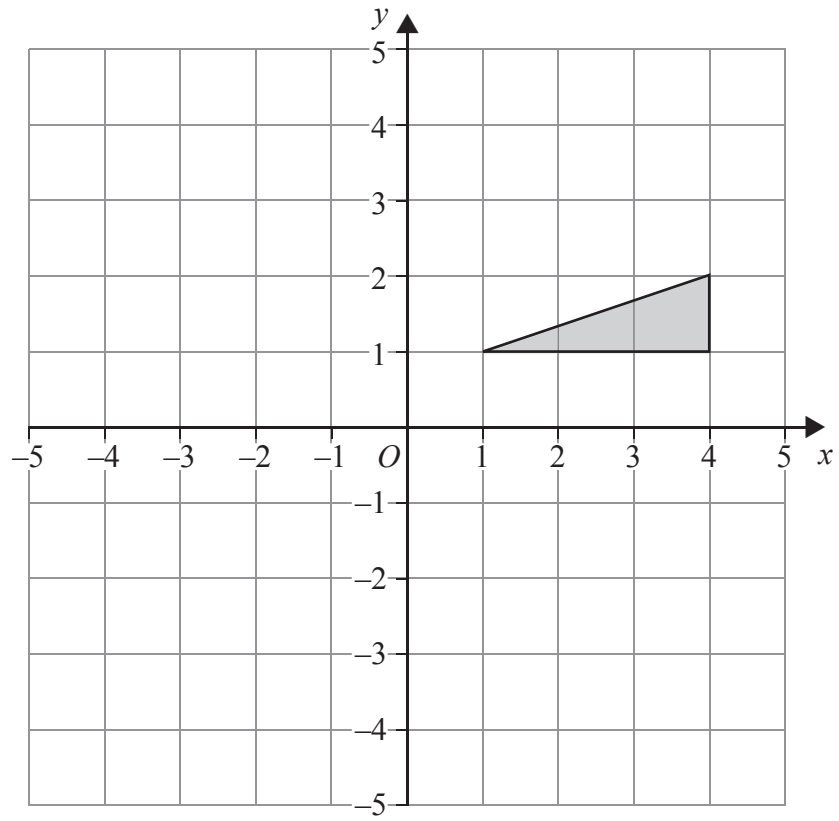
.....  
(1)  
(Total 3 marks)

Q5



Leave blank

6.



Rotate the triangle a half turn about the point  $O$ .

(Total 2 marks)

Q6

**TOTAL FOR SECTION B: 19 MARKS**

**TOTAL FOR PAPER: 38 MARKS**

**END**



**BLANK PAGE**

