



General Certificate of Secondary Education  
January 2009

## Mathematics



Module N1 Paper 2  
**(With calculator)**  
Foundation Tier  
[GMN12]



GMN12

FRIDAY 9 JANUARY  
**10.30 am – 11.15 am**

### TIME

45 minutes.

### INSTRUCTIONS TO CANDIDATES

Write your Centre Number and Candidate Number in the spaces provided at the top of this page.

Write your answers in the spaces provided in this question paper.

Answer **all twelve** questions.

Any working should be clearly shown in the spaces provided since marks may be awarded for partially correct solutions.

### INFORMATION FOR CANDIDATES

The total mark for this paper is 44.

Figures in brackets printed down the right-hand side of pages indicate the marks awarded to each question or part question.

You should have a calculator, ruler, compasses, set-square and protractor.

For Examiner's use only	
Question Number	Marks
1	
2	
3	
4	
5	
6	
7	
8	
9	
10	
11	
12	

<b>Total Marks</b>	
--------------------	--

71	
----	--



Candidate Number

--

**BLANK PAGE**

- 1 The number of medals won by Chile in the Special Olympics is shown in the pictogram below.

**MEDALS WON**

Gold		8
Silver		
Bronze		20

- (a) Complete the key for the pictogram.

 represents \_\_\_\_\_ medals [1]

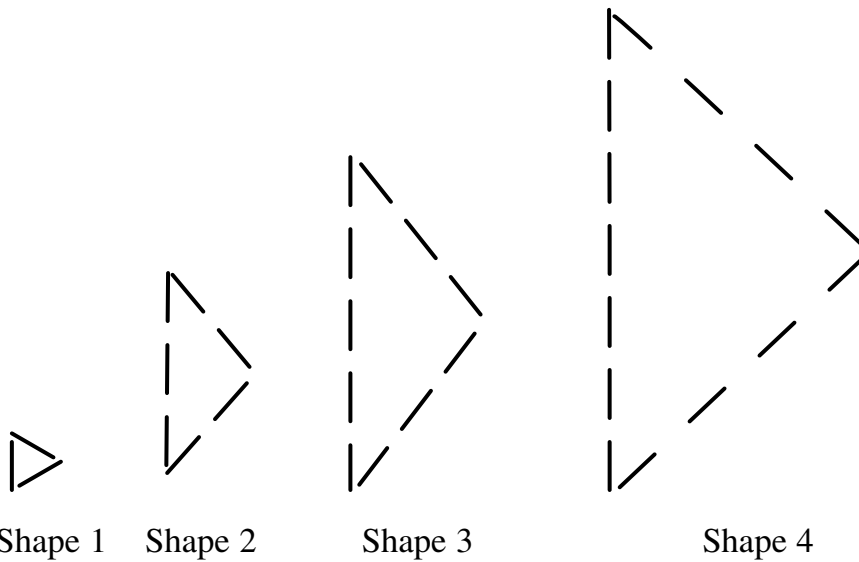
- (b) How many silver medals were won?

Answer \_\_\_\_\_ [1]

- (c) Complete the pictogram to show the number of bronze medals. [1]

Examiner Only	
Marks	Remark

2 Triangular shapes are formed using matchsticks.



(a) Complete the table to show the total number of matchsticks needed for Shape 5.

Shape number	1	2	3	4	5
Number of matchsticks	3	7	11	15	

[1]

(b) What pattern do you notice in the 'Number of matchsticks' row?

\_\_\_\_\_

\_\_\_\_\_ [1]

3 What metric unit would you use to measure

(a) the amount of liquid on a teaspoon,

Answer \_\_\_\_\_ [1]

(b) the weight of a packed suitcase?

Answer \_\_\_\_\_ [1]

Examiner Only	
Marks	Remark



**5** Ten students have part time jobs at the weekend. Their earnings are

£20    £33    £19    £22    £31  
£36    £28    £25    £27    £34

Calculate the mean amount of money earned by the students.

Answer £ \_\_\_\_\_ [3]

**6 (a)** Write down the number thirty-seven thousand and fifty-six in figures.

Answer \_\_\_\_\_ [1]

**(b)** Calculate  $(3.27)^2$

Answer \_\_\_\_\_ [1]

**(c)** Write down the largest of these three numbers.

0.5788    0.572    0.58

Answer \_\_\_\_\_ [1]

**(d)** Write 51.07718 correct to two decimal places.

Answer \_\_\_\_\_ [1]

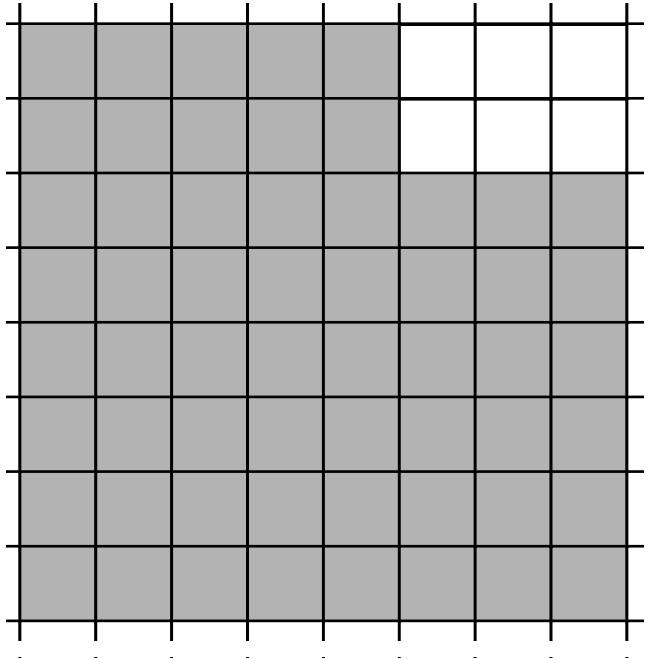
**(e)** Write 34.56 correct to three significant figures.

Answer \_\_\_\_\_ [1]

Examiner Only

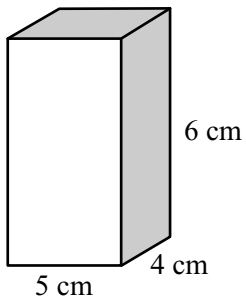
Marks    Remark

- 7 (a) Find the area of the shaded shape. Each small square has side 1 cm.



Answer \_\_\_\_\_ [3]

- (b) Calculate the volume of the cuboid shown.



Answer \_\_\_\_\_  $\text{cm}^3$  [2]

- (c) A different cuboid has volume  $300\text{ cm}^3$ . Its breadth is 5 cm. Write down possible dimensions for its length and height.

Answer \_\_\_\_\_ cm and \_\_\_\_\_ cm [1]

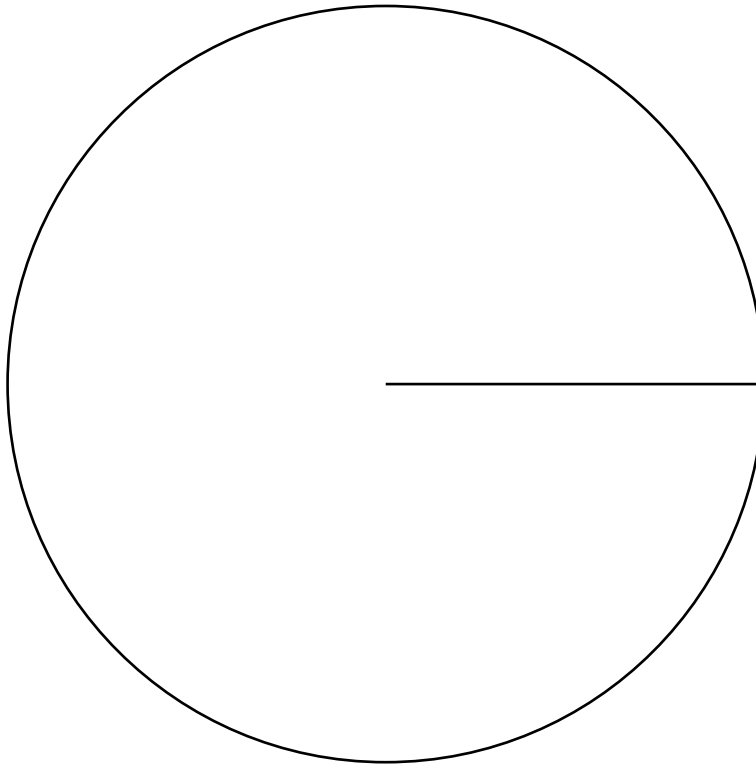




(b) The table below gives the estimated population of each of five countries in the year 2000.

Draw a pie chart to illustrate this information.

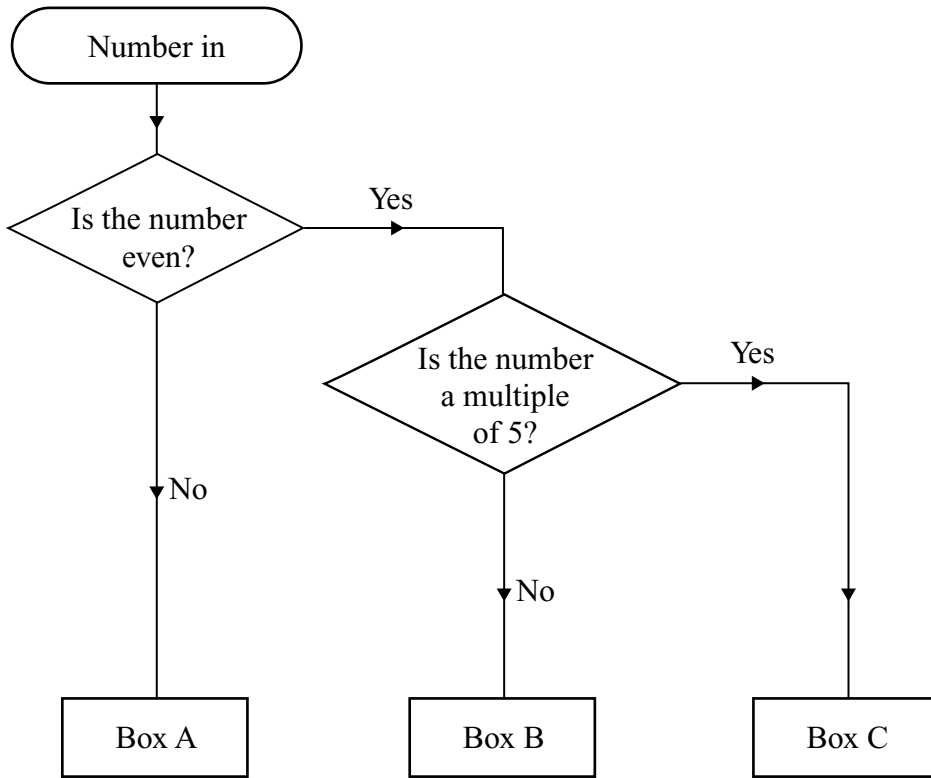
Country	Population (millions)
N. Ireland	1.6
Wales	2.7
Republic of Ireland	3.9
Scotland	5.0
England	46.8



[4]

Examiner Only	
Marks	Remark

10



Using the decision tree diagram, name the box for

- (a) 22    Answer Box \_\_\_\_\_
- (b) 31    Answer Box \_\_\_\_\_
- (c) 40    Answer Box \_\_\_\_\_ [2]

**11** A boy starts school at 9 am. He finishes at 3.25 pm.  
 There is a 15 minute mid-morning break and a 50 minute lunch break.  
 There are 8 lessons in the day, each of the **same** length.  
 How long is each lesson?  
**Show your working.**

Answer \_\_\_\_\_ minutes [3]

Examiner Only	
Marks	Remark

**12 Calculate**

**(a)** the cube of 6

Answer \_\_\_\_\_ [1]

**(b)**  $2^4$

Answer \_\_\_\_\_ [1]

Examiner Only	
Marks	Remark

---

**THIS IS THE END OF THE QUESTION PAPER**

---

