

Centre Number						Candidate Number				
Surname										
Other Names										
Candidate Signature										

For Examiner's Use	
Examiner's Initials	
Pages	Mark
2-3	
4-5	
6-7	
8-9	
10-11	
12	
TOTAL	



General Certificate of Secondary Education  
Higher Tier  
November 2011

# Mathematics

# 43602H

Unit 2

Monday 14 November 2011 9.00 am to 10.15 am

# H

<p><b>For this paper you must have:</b></p> <ul style="list-style-type: none"> <li>mathematical instruments.</li> </ul> <p>You must <b>not</b> use a calculator.</p>	
--	--

### Time allowed

- 1 hour 15 minutes

### Instructions

- Use black ink or black ball-point pen. Draw diagrams in pencil.
- Fill in the boxes at the top of this page.
- Answer **all** questions.
- You must answer the questions in the spaces provided. Do not write outside the box around each page or on blank pages.
- Do all rough work in this book.

### Information

- The marks for questions are shown in brackets.
- The maximum mark for this paper is 66.
- The quality of your written communication is specifically assessed in Questions 7 and 11. These questions are indicated with an asterisk (\*)
- You may ask for more answer paper and graph paper. These must be tagged securely to this answer booklet.

### Advice

- In all calculations, show clearly how you work out your answer.



N 0 V 1 1 4 3 6 0 2 H 0 1

WMP/Nov11/43602H

# 43602H

Answer **all** questions in the spaces provided.

**1**  $k = 9$  and  $m = -4$

Work out the value of  $\frac{5(2k-6)}{m}$

.....

.....

.....

.....

Answer ..... (3 marks)

**2** Given that  $25.6 \times 32 = 819.2$

**2 (a)** work out  $\frac{81.92}{32}$

.....

Answer ..... (1 mark)

**2 (b)** work out  $0.256 \times 320$

.....

Answer ..... (1 mark)



3  $a$  and  $b$  are different prime numbers less than 12.

Work out **three** pairs of numbers  $a$  and  $b$  such that  $\sqrt{(2a + b)}$  is a whole number.

.....

.....

.....

.....

.....

.....

Answer  $a =$  ..... and  $b =$  .....

$a =$  ..... and  $b =$  .....

$a =$  ..... and  $b =$  ..... (3 marks)

4 In May, a coat costs £64.  
In June, the May price is rounded to the nearest £10.  
In July, the June price is reduced by 20%.

Ian has £50.

Does he have enough money to buy the coat in July?

.....

.....

.....

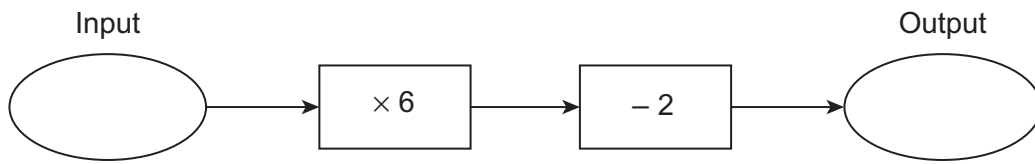
.....

.....

(3 marks)



- 5 Here is a number machine.



The output is twice the input.

Work out the input.

.....

.....

.....

Answer ..... (3 marks)

- 6 Julie works 20 hours each week.  
She earns £7.50 per hour.  
She saves one-fifth of her earnings.

She wants to buy an iPad costing £429.

How many weeks does it take her to save enough to buy this iPad?  
You **must** show your working.

.....

.....

.....

.....

.....

.....

Answer ..... (4 marks)



**\*7** Last year, 12 students went to the theatre.  
 The total cost of the tickets was £240.  
 This year, 8 students are going.  
 The cost of each ticket has increased by 15%.  
 They have a total of £200.  
 Is this enough to buy 8 tickets?  
 You **must** show your working.

.....  
 .....  
 .....  
 .....  
 .....  
 .....  
 .....

(5 marks)

**8 (a)** Simplify  $y^4 \times y^7$

.....

Answer ..... (1 mark)

**8 (b)** Simplify  $w^{12} \div w^4$

.....

Answer ..... (1 mark)

**8 (c)** Rearrange  $y = 3x + 2$  to make  $x$  the subject.

.....  
 .....  
 .....

Answer ..... (2 marks)



**9** Ali, Beth and Clare take a test.

The ratio of Ali's score to Beth's score is 5 : 3  
Ali scored 10 more marks than Beth.

Clare scored 7 more marks than Ali.

Work out each of their scores.

.....  
.....  
.....  
.....  
.....  
.....

Answer Ali ..... marks

Beth ..... marks

Clare ..... marks

(3 marks)

**10 (a)** Expand  $m(m + 4)$

.....

Answer ..... (2 marks)

**10 (b)** Factorise fully  $12xy^2 - 6y$

.....

.....

Answer ..... (2 marks)



**\*11** Solve the equation  $\frac{2x - 3}{4} + \frac{x - 1}{3} = 2$

.....  
.....  
.....  
.....  
.....  
.....  
.....  
.....

Answer  $x =$  ..... (5 marks)

**12 (a)** Factorise  $n^2 + 7n + 6$

.....  
.....  
.....

Answer ..... (2 marks)

**12 (b)** Hence, or otherwise, write 176 as the product of its prime factors.  
Give your answer in index form.

.....  
.....  
.....  
.....  
.....  
.....

Answer ..... (3 marks)

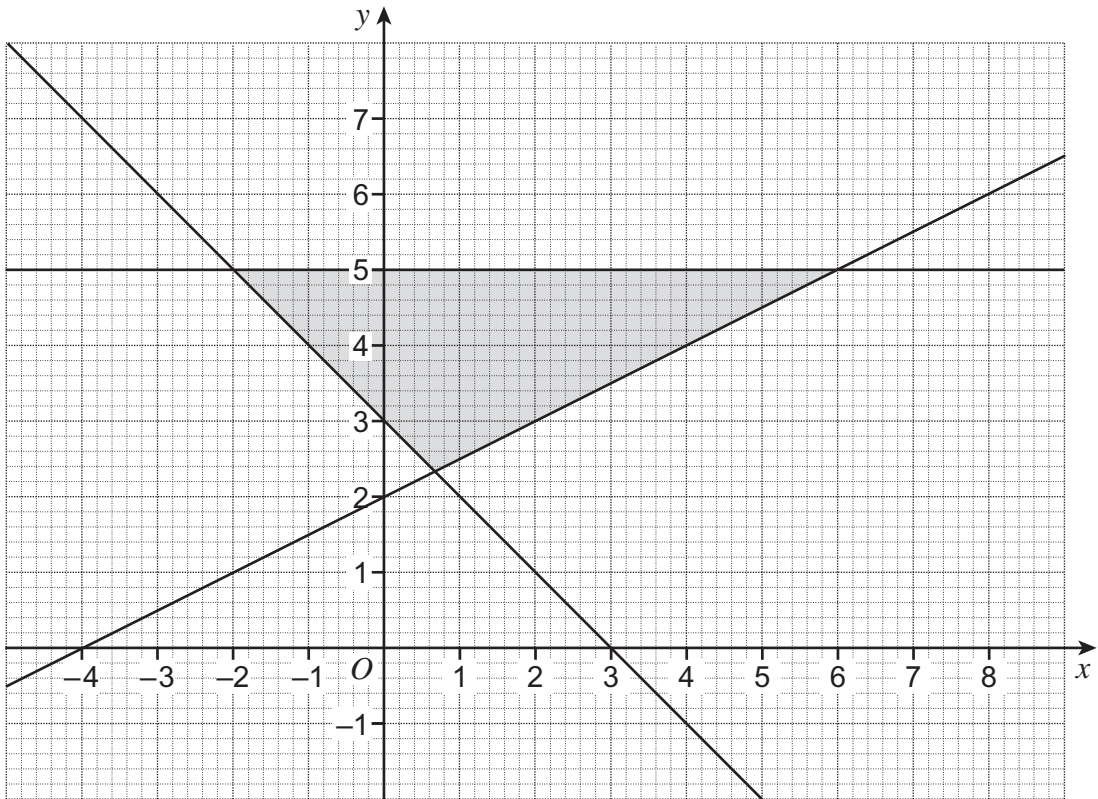


13 Points in the shaded region satisfy three inequalities.

One of the inequalities is  $y \leq 5$

Which of these are the other **two** inequalities?

- A  $2y \geq x - 4$       B  $x + y \geq 3$       C  $y \geq 2x + 4$   
D  $2y \geq x + 4$       E  $x + y \leq 3$



.....  
.....  
.....  
.....  
.....  
.....  
.....

Answer ..... and ..... (2 marks)

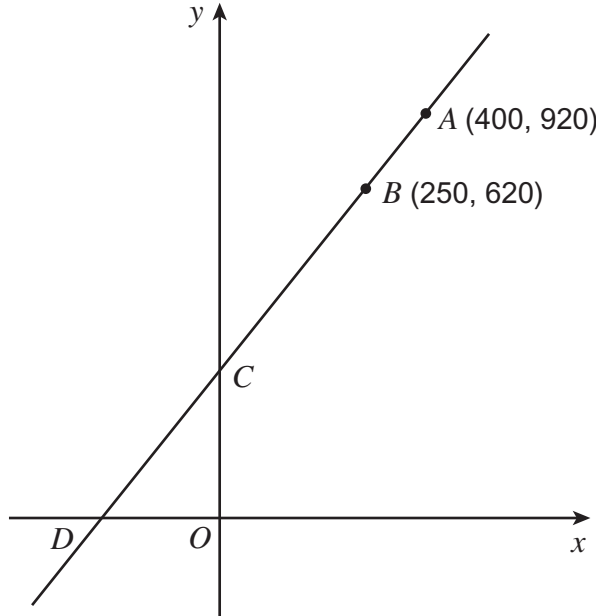




14

The diagram shows a line  $ABCD$ .  
 $A$  is the point  $(400, 920)$ .  
 $B$  is the point  $(250, 620)$ .  
The line cuts the  $y$ -axis at  $C$  and the  $x$ -axis at  $D$ .

Not drawn accurately



Work out the coordinates of  $C$  and  $D$ .

.....

.....

.....

.....

.....

.....

.....

.....

Answer  $C$  ( ..... , ..... )

$D$  ( ..... , ..... ) (4 marks)

6

Turn over ►





16 Given that  $x^2 + ax + b \equiv (x - 7)^2 - a$

work out the values of  $a$  and  $b$ .

.....  
.....  
.....  
.....  
.....  
.....

Answer  $a = \dots\dots\dots b = \dots\dots\dots$  (3 marks)

17 Here is a formula  $r = \sqrt{(w^2 - h^2)}$

Work out the value of  $r$  when  $w = 9\sqrt{2}$  and  $h = 5\sqrt{6}$

Give your answer in the form  $a\sqrt{b}$  where  $a$  and  $b$  are integers greater than 1.

.....  
.....  
.....  
.....  
.....  
.....  
.....

Answer ..... (3 marks)

Turn over for the next question



18 Solve the simultaneous equations

$$y^2 = 2x + 29$$
$$y = x - 3$$

You **must** show your working.

.....

.....

.....

.....

.....

.....

.....

.....

.....

.....

.....

Answer ..... (5 marks)

**END OF QUESTIONS**

