

Surname	Centre Number	Candidate Number
Other Names		0



**GCSE**

4762/01

**LEISURE AND TOURISM**

**Unit 2: Leisure and Tourism Destinations**

P.M. MONDAY, 16 May 2011

1½ hours

**Section A**

**Section B**

Question	Maximum Mark	Examiner Mark
1	7	
2	10	
3	6	
4	7	
5	16	
6	18	
7	16	
8	10	
<b>Total</b>	90	

**INSTRUCTIONS TO CANDIDATES**

Use black ink or black ball-point pen. Do not use pencil or gel pen. Do not use correction fluid.

Write your name, centre number and candidate number in the spaces at the top of this page.

Answer **all** questions in Section A and Section B.

Write your answers in the spaces provided in this booklet.

If you run out of space in the question-and-answer booklet you may use continuation sheets. Number the questions clearly and put your sheets in this question-and-answer booklet.

**INFORMATION FOR CANDIDATES**

The number of marks is given in brackets at the end of each question or part-question.

You are reminded that assessment will take into account the quality of written communication used in your answers that involve extended writing.



M A Y 1 1 4 7 6 2 0 1 0 1

SECTION A

You are advised to spend about **30 minutes** on this section.  
Answer **all** the questions, writing your answers in the spaces provided.



Fig. 1

[www.hsc.csu.edu.au](http://www.hsc.csu.edu.au) via [www.images.google.co.uk](http://www.images.google.co.uk)





2. Study the following box which gives the names of ten National Parks from around the world.

Snowdonia	Yosemite	Teide	Cairngorms
Northumberland	Joshua Tree	Monfrague	
North York Moors	Pembrokeshire Coast	Doñana	

(a) (i) Identify **one** National Park from England. [1]

.....

(ii) Identify **one** National Park from Wales. [1]

.....

(iii) Identify **one** National Park from Scotland. [1]

.....

(iv) Identify **one** National Park from outside the **UK**. [1]

.....

(b) Outline the purpose of National Parks. [2]

.....  
.....  
.....  
.....  
.....  
.....  
.....  
.....  
.....  
.....





3. Study Fig. 2 which shows a climate chart for Cairo, Egypt.

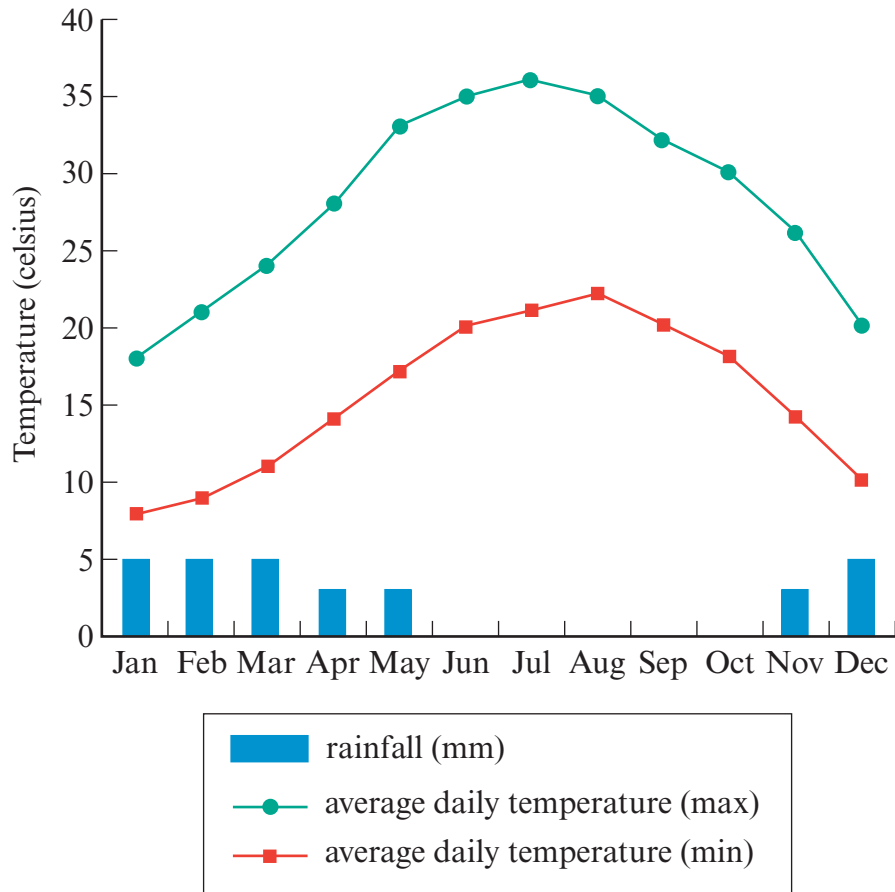


Fig. 2

(a) (i) What is the average daily maximum temperature in July? [1]

.....

(ii) What is the average daily minimum temperature in March? [1]

.....

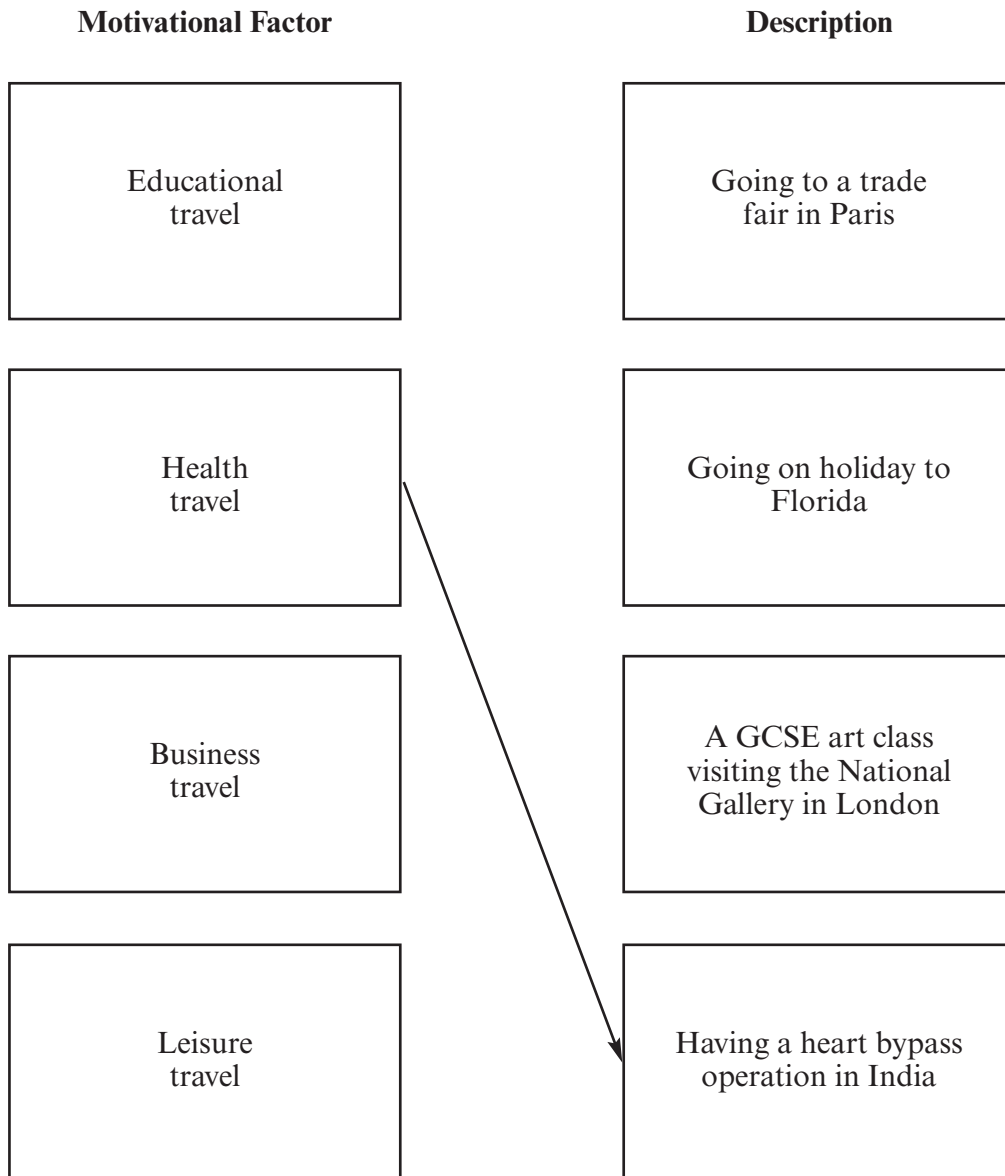




4. There are a number of reasons why people travel. These are called *motivational factors*.

- (a) Link each *motivational factor* to its correct description. Each *motivational factor* should be linked to **one** description only. [3]

An example has been completed for you. The lines may cross over each other.





Study Fig. 3 which is an extract from a newspaper article about *health travel*.

**UK PATIENTS AVOID THE NHS LIST AND FLY TO INDIA FOR MAJOR OPERATIONS.**

**By 2012 it is predicted that 250,000 tourists will visit India for health treatment.**

Fig. 3

(b) (i) Suggest **two** reasons why *health travel* is increasingly popular with **UK** residents. [2]

- 1. ....
- 2. ....

(ii) Suggest **two** benefits resulting from *health travel* for host destinations such as India. [2]

- 1. ....
- 2. ....

(Total 7 marks)



## SECTION B

*You are advised to spend approximately 60 minutes on this section.*

*Answer **all** the questions, writing your answers in the spaces provided.*

5. Study Fig. 4 which is an extract from a website about accommodation in Edinburgh, Scotland.

### ACCOMMODATION IN EDINBURGH

Edinburgh boasts a great choice of accommodation whether you're visiting on your own or with friends, family or someone special. There are also plenty of options for those visiting for business purposes or sporting events.

Choose to stay in one of the many hotels such as the three star Parliament House Hotel or a world famous luxury hotel like the Caledonian Hilton. Numerous guest houses like the Castleview offer comfortable accommodation at a reasonable rate.

**Caledonian Hilton**



**Linlithgow Cottages**



If you're on a tighter budget, why not try one of the many hostels the city provides. The Edinburgh Central Youth Hostel is in the city centre and is particularly popular with backpackers from all over the world.

Camping, caravanning and campervan enthusiasts will appreciate the wide range of parks in Edinburgh and its surrounding areas, which all have excellent facilities. Mortonhall Caravan and Camping Park is ideally situated less than a mile from the city centre.

**Mortonhall Park**



**Edinburgh Central Youth Hostel**



Alternatively, enjoy the comforts of home in a rental cottage or modern city apartment. Irvine Apartments and Linlithgow Cottages are just two examples within a few minutes of the city centre.

From budget to luxury, you'll find a full range of accommodation in Scotland's capital.

Adapted sources: [www.visitscotland.com](http://www.visitscotland.com) – [www.1hilton.com](http://www.1hilton.com) – [www.linlithgowcottages.com](http://www.linlithgowcottages.com) – [www.meadowhead.co.uk](http://www.meadowhead.co.uk) – [www.travelingscotland.com](http://www.travelingscotland.com)

**Fig. 4**







**BLANK PAGE**

**PLEASE DO NOT WRITE ON THIS PAGE**











7. Study Fig. 5 which shows images of *winter sports* activities.



Adapted sources via: [www.images.google.com](http://www.images.google.com)

Fig. 5

(a) Identify **two** *winter sports* shown in Fig. 5.

[2]

1. ....
2. ....







8. Study Fig. 6 which shows images and information about *ecotourism* on Palau Island.

**Palau is an island in the Pacific Ocean**



Adapted source: [www.worldatlas.com](http://www.worldatlas.com)

**Ecotourism on Palau Island**

Tourists can walk along unspoiled beaches, go trekking through dense jungles or scuba dive in over 460 miles of reefs and lagoon waters which are dedicated no-fishing zones. This has allowed many endangered species of fish to survive. The Palau Conservation Society manages nearly two dozen conservation areas, including a shark sanctuary, and encourages sustainable development to protect the island's jungle and fragile ecosystems.



All accommodation providers on Palau are required to offer 'green accommodation'.

Adapted sources: [www.janesoceania.com](http://www.janesoceania.com) – [www.ifa.hawaii.edu](http://www.ifa.hawaii.edu) – [www.visit-palau.com](http://www.visit-palau.com) – [www.visit-palau-blogspot.com](http://www.visit-palau-blogspot.com) – [www.shutterstock.com](http://www.shutterstock.com)

**Fig. 6**



(a) Identify **two** examples of *ecotourism*, in relation to wildlife, on Palau Island. [2]

.....

.....

.....

.....

.....

.....

.....

.....

.....

.....

(b) Explain the term 'green accommodation'. Give examples to support your explanation. [4]

.....

.....

.....

.....

.....

.....

.....

.....

.....

.....

.....

.....

.....

.....

.....

.....

.....

.....

.....

.....

.....

.....

.....





**BLANK PAGE**

**PLEASE DO NOT WRITE ON THIS PAGE**



**BLANK PAGE**

**PLEASE DO NOT WRITE ON THIS PAGE**

