

# Mark Scheme Summer 2009

GCSE

GCSE ICT (1185/3185)

Edexcel is one of the leading examining and awarding bodies in the UK and throughout the world. We provide a wide range of qualifications including academic, vocational, occupational and specific programmes for employers.

Through a network of UK and overseas offices, Edexcel's centres receive the support they need to help them deliver their education and training programmes to learners.

For further information, please call our GCE line on 0844 576 0025, our GCSE team on 0844 576 0027, or visit our website at [www.edexcel.com](http://www.edexcel.com).

If you have any subject specific questions about the content of this Mark Scheme that require the help of a subject specialist, you may find our **Ask The Expert** email service helpful.

Ask The Expert can be accessed online at the following link:

<http://www.edexcel.com/Aboutus/contact-us/>

Summer 2009

Publications Code UG021482

All the material in this publication is copyright

© Edexcel Ltd 2009

## Contents

1.	1185 and 3185/2F Mark Scheme	5
2.	1185 and 3185/2H Mark Scheme	23

## General Marking Guidance

- All candidates must receive the same treatment. Examiners must mark the first candidate in exactly the same way as they mark the last.
- Mark schemes should be applied positively. Candidates must be rewarded for what they have shown they can do rather than penalised for omissions.
- Examiners should mark according to the mark scheme not according to their perception of where the grade boundaries may lie.
- There is no ceiling on achievement. All marks on the mark scheme should be used appropriately.
- All the marks on the mark scheme are designed to be awarded. Examiners should always award full marks if deserved, i.e. if the answer matches the mark scheme. Examiners should also be prepared to award zero marks if the candidate's response is not worthy of credit according to the mark scheme.
- Where some judgement is required, mark schemes will provide the principles by which marks will be awarded and exemplification may be limited.
- When examiners are in doubt regarding the application of the mark scheme to a candidate's response, the team leader must be consulted.
- Crossed out work should be marked UNLESS the candidate has replaced it with an alternative response.

## 1185 and 3185/2F

## Section A

Question Number	Answer	Mark
1	D	1

Question Number	Answer	Mark
2	A	1

Question Number	Answer	Mark
3	C	1

Question Number	Answer	Mark
4	B	1

Question Number	Answer	Mark
5	B	1

Question Number	Answer	Mark
6	A	1

Question Number	Answer	Mark
7	C	1

Question Number	Answer	Mark
8	B	1

Question Number	Answer	Mark
9	A	1

Question Number	Answer	Mark
10	B	1

Question Number	Answer	Mark
11	C	1

Question Number	Answer	Mark
12	A	1

Question Number	Answer	Mark
13	A	1

Question Number	Answer	Mark
14	C	1

Question Number	Answer	Mark
15	A	1

Question Number	Answer	Mark
16	C	1

Question Number	Answer	Mark
17	C	1

Question Number	Answer	Mark
18	A	1

Question Number	Answer	Mark
19	D	1

Question Number	Answer	Mark
20	C	1

Mark Scheme - 09 1185/F 3185/F  
Section B

Question Number	Answer	Poss. Mark	Max Mark
1	(a)		
	(i)	35	1
	(ii)	A4	1
		allow 4A	1
	(iii)	F7	1
		allow 7F	1
			3

Question Number	Answer	Poss. Mark	Max Mark
1	(b)	Formatting/format	1
			1

Question Number	Answer	Poss. Mark	Max Mark
1	(c)	= C6 - D6	1
		Allow = SUM (C6 - D6)	1
		Allow formula without =	
		Not =SUM C6-D6	
			1

Question Number	Answer	Poss. Mark	Max Mark
1	(d)		
	(i)	=F3/10	1
		All of the following work no matter what the order.	
		=F3*0.1	1
		=F3*10%	1
		=(F3/100)*10 - works with or without the bracket	1
		=(F3*10/100) - works with or without the bracket	1
		=sum(F3/10)	1
		Not =sumF3/10	
		Allow without =	
			1
	(ii)	= F3 + G3	
		= G3 + F3	1
		= SUM(F3:G3)	1
		Allow = SUM (F3 + G3)	1
		Allow = SUM (G3 + F3)	1

Question Number	Answer	Poss. Mark	Max Mark
	Allow formula without =		
	Allow calculations of 110% eg F3*110	1	1

Question Number	Answer	Poss. Mark	Max Mark
1	(e)		
	(i) Highlight / select	1	
	Correct cells identified - A1:A7 and D1:D7 or A2:A7 and D2:D7 or B1:B7 and D1:D7 or B2:B7 and D2:D7	1	
	Insert Graph / Select Graph Icon / bar chart icon / menu / wizard / Open bar chart / graph	1	
	Select type of bar chart	1	
	Add / label / edit title	1	
	Add / label / edit axis / other details	1	
	Any other sensible editing eg add key NOT just colour	1	
			6
	Reasonable English (1) / good English (2) 1 mark for 2 technical terms, spelt correctly, from: - highlight - insert / select - icon / menu / wizard - column / cell	QoWC	3
		<b>Total</b>	<b>16</b>



Question Number	Answer	Poss. Mark	Max Mark
2	(a) CAD, Computer aided design	1	
			1

Question Number	Answer	Poss. Mark	Max Mark
2	(b) plotter	1	
			1

Question Number	Answer	Poss. Mark	Max Mark
2	(c)		
	(i) word processor	1	
	Allow DTP (Desktop publishing)	1	
	Do not accept Word/Publisher or other named software		
			1
	(ii) Homophones eg there their	1	
	UK US differences eg colour color	1	
	Incorrectly spelt place names (or other names) Not 'names' or 'customer names' Allow any reference to names once only	1	
	Mixed letters and numbers eg stock numbers / post code /email address	1	
	Mistakes in word art	1	
	Do not allow numbers	1	
	Correctly spelt words not in dictionary	1	
	Any other sensible response	1	
			2
	iii grammar check	1	
			1
	(iv) visual check	1	
	proof read	1	
	check by self	1	
	recheck	1	
			1

Question Number	Answer	Poss. Mark	Max Mark																												
2	(d) 1 mark for each correct entry																														
	<table border="1"> <thead> <tr> <th></th> <th>Input</th> <th>Output</th> <th>Storage</th> </tr> </thead> <tbody> <tr> <td>Monitor</td> <td></td> <td>✓</td> <td></td> </tr> <tr> <td>Mouse</td> <td>✓</td> <td></td> <td></td> </tr> <tr> <td>Floppy Disk Drive</td> <td></td> <td></td> <td>✓</td> </tr> <tr> <td>Scanner</td> <td>✓</td> <td></td> <td></td> </tr> <tr> <td>Keyboard</td> <td>✓</td> <td></td> <td></td> </tr> <tr> <td>Hard Drive</td> <td></td> <td></td> <td>✓</td> </tr> </tbody> </table>		Input	Output	Storage	Monitor		✓		Mouse	✓			Floppy Disk Drive			✓	Scanner	✓			Keyboard	✓			Hard Drive			✓		
	Input	Output	Storage																												
Monitor		✓																													
Mouse	✓																														
Floppy Disk Drive			✓																												
Scanner	✓																														
Keyboard	✓																														
Hard Drive			✓																												
			6																												
		<b>Total</b>	<b>12</b>																												

Question Number	Answer	Poss. Mark	Max Mark
3			
	(a)		
	(i) 6	1	
	(ii) Ref. No.	1	
			2

Question Number	Answer	Poss. Mark	Max Mark
3	(b)		
	Addition - New customer	1	
	Deletion - no longer customer / customer hasn't bought furniture for a long time	1	
	Customers details change - allow examples Last purchase date Correct errors	1	
			3

Question Number	Answer	Poss. Mark	Max Mark
3	(c)		
	(i) Last Purchase Date	1	
	(ii) Sort	1	
			2

Question Number	Answer	Poss. Mark	Max Mark
3	(d)		
	Type check	1	
	Length check	1	
	Range check	1	
	Format check / input mask	1	
	Look up check	1	
	(Accept well explained examples in context of Ref. No. without name)	1	
			2
		<b>Total</b>	<b>9</b>

Question Number	Answer	Poss. Mark	Max Mark
4	(a)		
	Share documents / files / folders / data	1	
	Share peripherals / printers	1	
	Security can be centrally managed	1	
	Backup can be centrally managed	1	
	Files (to share) can be uploaded centrally	1	
	Software can be installed easily / faster / centrally	1	
	Can use any workstation / hotdesking	1	
	Communicate with other workstations	1	
	Monitor / control users	1	
	Only 1 internet connection needed	1	
	Terminals cheaper than stand-alones	1	
	Not share software		
			3

Question Number	Answer	Poss. Mark	Max Mark
4	(b)		
	Expensive to install / increased cabling	1	
	Network manager / technician	1	
	Reliance on server / network failure	1	
	Performance eg lots of users / sharing peripherals	1	
	Users need to be trained	1	
	Viruses spread quickly Allow viruses will spread to all machines	1	
	Not just need for security Must show need for more / increased security required		2
		Total	5

Mark Scheme - 09 1185/F  
Section C

QUESTION		ANSWER	POSS. MARK	MAX
1	(a)	Presentation / multi media	1	
		NOT PowerPoint or other named product		
				1

QUESTION		ANSWER	POSS. MARK	MAX
1	(b)	resize / enlarge /made bigger		
		Not zoom	1	
		rotate	1	
		crop	1	
				3

QUESTION		ANSWER	POSS. MARK	MAX
1	c			
	(i)	movement of text / pictures / graphics on screen	1	
		ways in which slides / images / text appear on to and off screen	1	
		Way in which image moves eg spin	1	
		Sensible example	1	
				2
	(ii)	microphone	1	
				1
	(iii)	speaker / headphones	1	
				1

QUESTION		ANSWER	POSS. MARK	MAX
1	(d)	on timer	1	
		hyperlink	1	
		action button	1	
		space bar	1	
		enter key	1	
		right / left arrow keys	1	
		Not keyboard / any key	1	
		Click arrow on remote		
		Not remote	1	
				2

QUESTION		ANSWER	POSS. MARK	MAX
1	(e)	projector <b>Allow</b> overhead projector <b>Not</b> OHP	1	
		screen / white board / interactive white board	1	
		speakers	1	
		<b>Not</b> monitor		
				2
			<b>Total</b>	<b>12</b>

QUESTION		ANSWER	POSS. MARK	MAX
2	(a)	keyboard	1	
		mouse	1	
		scanner	1	
		digital camera	1	
				<b>1</b>

QUESTION		ANSWER	POSS. MARK	MAX												
2	(b)															
	(i)	2 correct lines = 1 mark														
		4 correct lines = 2 marks														
		6 correct lines = 3 marks														
		<table border="1"> <thead> <tr> <th>Speed</th> <th>Printer Type</th> <th>Method of printing</th> </tr> </thead> <tbody> <tr> <td>Slow</td> <td>Laser</td> <td>Inked ribbon</td> </tr> <tr> <td>Fast</td> <td>Dot matrix</td> <td>Toner</td> </tr> <tr> <td>Medium</td> <td>Ink jet</td> <td>Liquid ink</td> </tr> </tbody> </table> <p>Slow - dot matrix - inked ribbon  Fast - laser - toner  Medium - ink jet - liquid ink</p>	Speed	Printer Type	Method of printing	Slow	Laser	Inked ribbon	Fast	Dot matrix	Toner	Medium	Ink jet	Liquid ink		
Speed	Printer Type	Method of printing														
Slow	Laser	Inked ribbon														
Fast	Dot matrix	Toner														
Medium	Ink jet	Liquid ink														
				<b>3</b>												
	(ii)	monitor / screen / VDU / GDU	1													
				<b>1</b>												

QUESTION		ANSWER	POSS. MARK	MAX										
2	(c)													
	(i)	program	1											
				1										
	(ii)	<table border="1"> <thead> <tr> <th>Description</th> <th>Feature</th> </tr> </thead> <tbody> <tr> <td>Small pictures representing commands</td> <td>icons</td> </tr> <tr> <td>Lists of options</td> <td>menus</td> </tr> <tr> <td>Rectangular displays on the screen</td> <td>windows</td> </tr> <tr> <td>Arrows that can be moved around the screen</td> <td>pointers</td> </tr> </tbody> </table>	Description	Feature	Small pictures representing commands	icons	Lists of options	menus	Rectangular displays on the screen	windows	Arrows that can be moved around the screen	pointers		
Description	Feature													
Small pictures representing commands	icons													
Lists of options	menus													
Rectangular displays on the screen	windows													
Arrows that can be moved around the screen	pointers													
				4										

QUESTION		ANSWER	POSS. MARK	MAX
2	d	Change regularly	1	
		Keep it secret / don't tell anyone	1	
		Mix letters & numbers / punctuation marks	1	
		Mix upper and lower case	1	
		Don't choose anything obvious	1	
		Don't write down	1	
		Minimum 6 characters	1	
		Don't let people see you entering it	1	
		Make it something you will remember / memorable	1	
				4
			<b>Total</b>	<b>14</b>



QUESTION		ANSWER	POSS. MARK	MAX
3	(a)			
	(i)	Order 24/7	1	
		Don't have to leave home to <b>post a letter</b> <b>NOT</b> 'Don't have to leave home to <u>go to shop</u> '	1	
		Will know if in stock	1	
		Automatic confirmation of order / know order is received	1	
		More reliable / can't get lost in the post	1	
		On-line discounts	1	
		Latest offers / new arrivals / wider range / all stock	1	
		Save postage / telephone call for sending the order	1	
		Easy to compare prices with other sites	1	
		Faster turnaround	1	
		Order tracking	1	
		Secure payment systems	1	
				<b>3</b>
	(ii)	Can receive orders 24/7	1	
		Fewer errors	1	
		Orders go <b>directly</b> into the computer system/ no need to input data		
		<b>Not just</b> 'orders processed by computer'	1	
		Fewer staff needed	1	
		Not cheaper / saves cost without justification eg cost of brochures	1	
		Wider customer base	1	
		Receive payment before despatch / better cash flow	1	
		Orders not lost in post	1	
				<b>3</b>
		** Stress is mail order v online, therefore no answers relating to shops		

QUESTION		ANSWER	POSS. MARK	MAX
3	(b)	(credit card) fraud / bogus web site	1	
		Identity theft	1	
		Hacking	1	
				2

QUESTION		ANSWER	POSS. MARK	MAX
3	(c)	Open search engine / use ISP search facility		
		Allow 'google it' - not 'go to google'	1	
		Enter search criteria	1	
		Choose site from list	1	
		Narrow search to UK sites /refine search	1	
				3
		Reasonable English (1) / good English (2)		
		1 mark for 2 technical terms, spelt correctly, from:		
		- criteria / key words		
		- link / hyperlink		
		- search engine		
		- select /click		
			QWC	3

QUESTION		ANSWER	POSS. MARK	MAX
3	(d)	Processed fairly and lawfully	1	
		Obtained fairly and lawfully	1	
		Processed in accordance with rights of data subject	1	
		Data must be relevant	1	
		Data must be adequate / not excessive	1	
		Data must be kept only as long as necessary	1	
		Must be kept secure	1	
		Cannot be sent outside of the European Union (unless has same level of protection)	1	
		Data must be shown to subjects on request	1	
		Must specify the purpose for holding the data	1	
		<b>ACCEPT</b> Must register with DP registrar	1	
		<b>Not</b> Data may not be passed to others		
				2

QUESTION		ANSWER	POSS. MARK	MAX
3	(e)	Eye Strain	Anti-glare screens / screen filter	1
			Suitable lighting	1
			Avoid sunlight reflecting on screen/ blinds at windows	1
			Swivelling screens	1
			Focus on distant objects	1
			Adjust brightness	1
		Back	Adjustable chairs	1
			Height of tables / chairs	1
			Footrests / backrests	1
			Tilting screens	1
			Swivelling screens	1
			Ergonomic furniture	1
			Not comfortable chairs	1
				2
			<b>Total</b>	<b>18</b>

QUESTION		ANSWER	POSS. MARK	MAX
4	(a)			
		24/7	1	
		Avoids human error	1	
		More accurate	1	
		Regular time intervals can be set (for checking values)	1	
		More frequent readings / shorter time intervals	1	
		Better response time	1	
				3

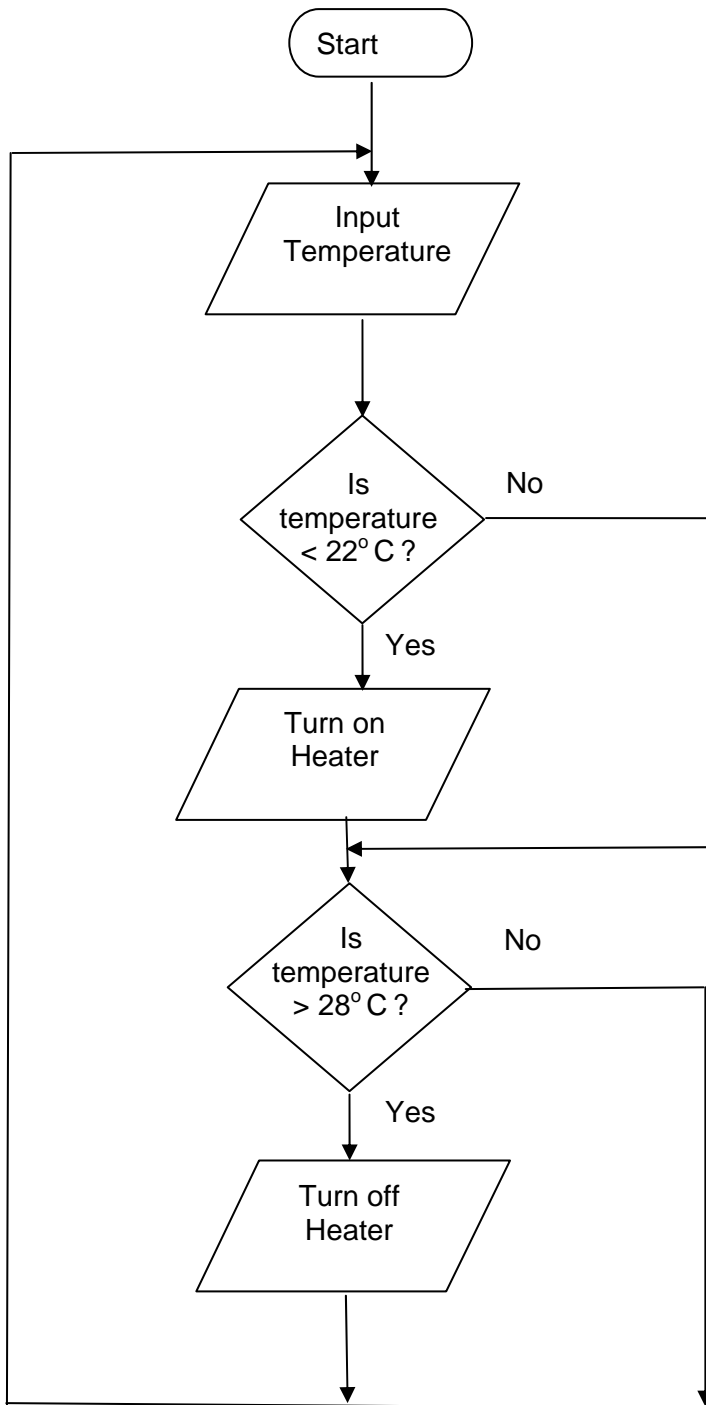
QUESTION		ANSWER	POSS. MARK	MAX
4	(b)			
	(i)	1 mark for each correct point (Flow chart at end of mark scheme)	5	
				5
	(ii)	Input device	1	
		Detects / takes a reading / measures <b>Not</b> senses	1	
		Physical quantity - allow examples <b>Do not allow</b> changes in physical quantities	1	
				2
			<b>Total</b>	<b>10</b>

QUESTION		ANSWER	POSS. MARK	MAX
5	(a)			
		Interview / ask staff (users)	1	
		Questionnaires / survey	1	
		Study documentation	1	
		Observation	1	
		Hold meeting / set up a focus group	1	
		Not try it herself		
				3

QUESTION		ANSWER	POSS. MARK	MAX												
(b)		<table border="1"> <tr> <td>Stage 1</td> <td>Investigation</td> </tr> <tr> <td>Stage 2</td> <td>Analysis</td> </tr> <tr> <td>Stage 3</td> <td>Design</td> </tr> <tr> <td>Stage 4</td> <td>Implement</td> </tr> <tr> <td>Stage 5</td> <td>Testing</td> </tr> <tr> <td>Stage 6</td> <td>Monitor</td> </tr> </table> <p>5 correct = 3 marks 3 correct = 2 marks 2 correct = 1 mark</p>	Stage 1	Investigation	Stage 2	Analysis	Stage 3	Design	Stage 4	Implement	Stage 5	Testing	Stage 6	Monitor		3
Stage 1	Investigation															
Stage 2	Analysis															
Stage 3	Design															
Stage 4	Implement															
Stage 5	Testing															
Stage 6	Monitor															

QUESTION		ANSWER	POSS. MARK	MAX
	(c)			
	(i)	Extreme - 6 or 36	1	1
	(ii)	Typical - 12, 17, 24, 13, 19, 29	1	1
	(iii)	Invalid - 41, 37	1	1
			Total	9

Question C4 bi



1185 and 3185/2H

Section A

Question Number	Answer	Mark
1	A	1

Question Number	Answer	Mark
2	C	1

Question Number	Answer	Mark
3	A	1

Question Number	Answer	Mark
4	C	1

Question Number	Answer	Mark
5	C	1

Question Number	Answer	Mark
6	A	1

Question Number	Answer	Mark
7	D	1

Question Number	Answer	Mark
8	C	1

Question Number	Answer	Mark
9	A	1

Question Number	Answer	Mark
10	C	1

Question Number	Answer	Mark
11	C	1

Question Number	Answer	Mark
12	C	1

Question Number	Answer	Mark
13	A	1

Question Number	Answer	Mark
14	D	1

Question Number	Answer	Mark
15	D	1

Question Number	Answer	Mark
16	B	1

Question Number	Answer	Mark
17	D	1

Question Number	Answer	Mark
18	A	1

Question Number	Answer	Mark
19	B	1

Question Number	Answer	Mark
20	A	1



Mark Scheme - 09 1185/2H 3185/2H  
Section B

QUESTION		ANSWER	Poss. Mark	Max Mark
1	(a)			
	(i)	=E3/10	1	
		All of the following work no matter what the order.		
		=E3*0.1	1	
		=E3*10%	1	
		=(E3/100)*10 - works with or without brackets	1	
		=(E3*10/100) - works with or without brackets	1	
		=sum(E3/10)	1	
		Not =sumE3/10		
		Allow without =		
				1
	(ii)	= F3 + E3	1	
		= E3 + F3	1	
		=SUM(E3:F3)	1	
	Allow = SUM (F3 + E3)	1		
	Allow = SUM (E3 + F3)	1		
	Allow formula without =			
	Allow calculations of 110% eg E3*1.10 / E3*110%	1		
			1	

QUESTION		ANSWER	Poss. Mark	Max Mark
1	(b)	=IF(D2<H2,"Y","N")		
		=IF(H2>D2,"Y","N")		
		Completely correct including () and ""	3	
		Correct tests and values & incorrect () or ""	2	
		=IF(22<35,"Y","N")	2	
		=IF	1	
		Allow formula without =		
				3

QUESTION		ANSWER	Poss. Mark	Max Mark
1	(c)	Select / Highlight	1	
		Correct cells identified - A1:A7 and D1:D7 or A2:A7 and D2:D7 or B1:B7 and D1:D7 or B2:B7 and D2:D7	1	
		Insert Graph / Select Graph Icon / bar chart icon / menu / wizard / Open bar chart / graph	1	
		Select type of bar chart	1	
		Add / label / edit title	1	
		Add / label / edit axis / other details	1	
		Any other sensible editing NOT just colour	1	
		Reasonable English (1) / good English (2) 1 mark for 2 technical terms, spelt correctly, from: - highlight - insert / select - icon / menu / wizard - column / cell	QoWC	3
			<b>Total</b>	<b>14</b>

QUESTION		ANSWER	Poss. Mark	Max Mark
2	(a)			
	(i)	CAD, Computer aided design	1	1
	(ii)	Accurate scale drawings	1	
		Can scale up and down /zoom in	1	
		Easily edited/manipulated	1	
		Can be viewed in 3D	1	
		Can be viewed from various angles	1	
		Build components library	1	
		Can be linked with a CAM program	1	
		Saves time when re-drawing of plans is required. (Must be justified)	1	
		Can view designs in different finishes/wood	1	
		Measurements on designs	1	
				3

QUESTION		ANSWER	Poss. Mark	Max Mark
2	(b)			
		Graphics card	1	
		Graphics tablet / sketch pad / graphics pad	1	
		High resolution monitor or GDU NOT monitor	1	
		Plotter	1	
		A3 printer or larger printer	1	
		Extra / large amount RAM	1	
		CAM machine	1	
				3
			Total	7

QUESTION		ANSWER	Poss. Mark	Max Mark
3				
	(a)			
	(i)	A check by computer (software)	1	
		On data entry	1	
		To ensure data is acceptable, sensible, reasonable, of the right type / follows set rules	1	
		<b>Not</b> accurate / valid / correct		2
	(ii)	Length, 5 digits	1,1	
		Range, 00001 - 99999 / 000000 - 99999	1,1	
		Type, Numerical, numbers only		
		<b>Allow</b> Type, Text <b>only</b> if there is a clear description of the need to retain leading zeros	1,1	
		Format, nnnnn /input mask, nnnnn	1,1	
		Look up check, to make sure the customer exists in the database	1,1	
		<b>MUST</b> relate examples to Ref No		
		<b>No mark</b> if no named check or incorrect check		
				6

QUESTION		ANSWER	Poss. Mark	Max Mark
3	(b)			
		Logical	Verbal	
		Filter / query / search	Filter / query / search	1
		Last Purchase Date	Last Purchase Date	1
		>31/12/07 or >= 01/01/08 and < 01/01/09 or <= 31/12/08	After 31/12/07 And Before 01/01/09	1
		<b>Allow</b> is the same as / like / = (or equivalent)		
		<b>Allow</b> valid wild card examples eg ??/??/08 ##/##/08 **/**/08  <b>Do Not Allow</b> --/--/08		3
			<b>Total</b>	<b>11</b>

QUESTION		ANSWER	Poss. Mark	Max Mark
4	(a)			
		Share documents / files / folders / data	1	
		Share peripherals / printers	1	
		Security can be centrally managed	1	
		Backup can be centrally managed	1	
		Files (to share) can be uploaded centrally	1	
		Software can be installed easily / faster / centrally	1	
		Can use any workstation / hotdesking	1	
		Communicate with other workstations	1	
		Monitor / control users	1	
		Only 1 internet connection needed	1	
		Terminals cheaper than stand-alones	1	
		<b>Not share software</b>	1	
				<b>3</b>

QUESTION		ANSWER	Poss. Mark	Max Mark
4	(b)	Expensive to install / increased cabling	1	
		Network manager / technician	1	
		Reliance on server / network failure	1	
		Performance eg lots of users / sharing peripherals	1	
		Users need to be trained	1	
		Viruses spread quickly	1	
		<b>Not just need for security</b> <b>Must show need for more / increased security required</b>		
				<b>2</b>
			<b>Total</b>	<b>5</b>

QUESTION		ANSWER	Poss. Mark	Max Mark
5				
		Back button	1	
		Movement back to already visited pages	1	
		Forward button	1	
		Movement to next page	1	
		Home button	1	
		Allow to go directly back to home from different parts of site	1	
		Drop-down menus	1	
		Limit selection choices	1	
		<b>Not</b> drop down lists		
		Hyperlinks	1	
		Movement to other pages	1	
		Hotspots	1	
		movement to other pages	1	
		Site map / menu / contents page / side bar	1	
		movement to other pages	1	
		Search options	1	
		Movement to particular page	1	
		Bookmarks	1	
		Allow to move to a position on a page	1	
		<b>NOT</b> Browser navigator bar		
		<b>Allow</b> buttons / action buttons <b>only</b> if have no other eg home button		
			<b>Total</b>	<b>6</b>

Mark Scheme - 0806 1185/2H  
Section C

QUESTION		ANSWER	Poss. Mark	Max Mark
1	(a)			
	(i)	Order 24/7	1	
		Don't have to leave home to post a letter <b>NOT</b> Don't have to leave home to go to shop	1	
		Will know if in stock	1	
		Automatic confirmation of order / know order is received	1	
		More reliable / can't get lost in the post	1	
		On-line discounts	1	
		Latest offers / new arrivals /wider range / all stock	1	
		Save postage / telephone call for sending the order	1	
		Easy to compare prices with other sites	1	
		Faster turnaround	1	
		Order tracking	1	
		Secure payment systems	1	
				<b>3</b>
	(ii)	Can receive orders 24/7	1	
		Fewer errors	1	
		Orders go <b>directly</b> into the computer system / no need to input data		
		<b>Not</b> just 'orders processed by computer'	1	
		Fewer staff needed	1	
		<b>Not</b> cheaper / saves cost without justification eg cost of brochures	1	
		Wider customer base	1	
		Receive payment before despatch / better cash flow	1	
		Orders not lost in post		
		** Is mail order v online, therefore no answers relating to shops		
				<b>3</b>

QUESTION		ANSWER	Poss. Mark	Max Mark
1	(b)	Misuse of credit card, encryption	1,1	
		Fraud, secure sites / encryption bogus website, register with approved eg verisign	1,1	
		Identity theft, spyware	1,1	
		Hacking, firewalls / encryption	1,1	
				<b>4</b>

QUESTION		ANSWER	Poss. Mark	Max Mark
1	(c)	Open search engine / use ISP search facility Allow 'google it' - not 'go to google'	1	
		Enter search criteria	1	
		Choose site from list	1	
		Narrow search to UK sites / refine search	1	
				3
		Reasonable English (1) / good English (2) 1 mark for 2 technical terms, spelt correctly, from: - criteria / key words - link / hyperlink - search engine - select / click		
			QWC	3

QUESTION		ANSWER	Poss. Mark	Max Mark
1	(d)	Processed fairly and lawfully	1	
		Obtained fairly and lawfully	1	
		Processed in accordance with rights of data subject	1	
		Data must be relevant	1	
		Data must be adequate / not excessive	1	
		Data must be kept only as long as necessary	1	
		Must be kept secure	1	
		Cannot be sent outside of the European Union (unless has same level of protection)	1	
		Data must be shown to subjects on request	1	
		Must specify the purpose for holding the data	1	
		<b>ACCEPT</b> Must register with DP registrar	1	
		<b>Not</b> Data may not be passed to others	1	
				2
			<b>Total</b>	<b>18</b>



QUESTION		ANSWER	Poss. Mark	Max Mark
2				
	(a)	24/7	1	
		Avoids human error	1	
		More / very accurate	1	
		Regular time intervals can be set (for checking values)	1	
		More frequent readings /shorter time intervals	1	
		Better response time	1	
				3

QUESTION		ANSWER	Poss. Mark	Max Mark
2	(b)	Input device	1	
		Detects / takes a reading / measures <b>Not</b> senses	1	
		Physical quantity - allow examples Do not allow changes in physical quantities	1	
				2

QUESTION		ANSWER	Poss. Mark	Max Mark
2	(c)	Thermistor	1	
				1

QUESTION		ANSWER	Poss. Mark	Max Mark
2	(d)			
	(i)	Measure any values / every value / range / exact value <b>ALLOW</b> a comparison to digital if shows clear understanding eg graphs drawn	1	
		Continuously / constantly	1	2
	(ii)	So that the computer understands the data	1	
		Because digital data is ON/OFF / 1s & 0s	1	
		Computers <b>only</b> use digital / cannot read analogue	1	
				2
	(iii)	Interface	1	1

QUESTION		ANSWER	Poss. Mark	Max Mark

QUESTION		ANSWER	Poss. Mark	Max Mark
	(e)	Real-time		1

QUESTION		ANSWER	Poss. Mark	Max Mark
2	(f)	See final page of MS		
		Reading the temperature	1	
		Decision, action for turning on	1,1	
		Decision, action for turning off	1,1	
		For a totally logical correct answer	1	

		<p>The diagram illustrates four basic symbols used in flowcharts: a rectangle for 'Process', a diamond for 'Decision', a parallelogram for 'Input / Output', and a rounded rectangle for 'Start / Stop'. Below these symbols, a horizontal arrow points to the right, labeled 'Data Flow'.</p>		
				6
			<b>Total</b>	<b>18</b>

QUESTION		ANSWER	Poss. Mark	Max Mark
3	(a)	User communication with computer	1	
		Enable software to run	1	
		Controls I/O, peripherals	1	
		Resource allocation	1	
		Command interpretation	1	
		Memory management	1	
		Schedule tasks, multi tasking	1	
		Manages security	1	
		Data transfer	1	
		File management	1	
		Sending error messages	1	
		Monitor system performance	1	
				3

QUESTION		ANSWER	Poss. Mark	Max Mark
3	(b)			
	(i)	Window	Allows to have more than one program running	1,1
		Menu	Reduces choices Logical organisation Takes user quickly to ...	1,1
		Pointer	Allows movement around screen Highlight areas (Easy to) select from menus / icons	1,1
				4
	(ii)	Menu driven	Can take a long time to get to destination Difficult to find an item Need to have some idea of headings / terminology used	1,1
		Command line	Need to understand precise commands Takes a long time / difficult to learn commands Different software uses different commands	1,1
				4
			Total	11

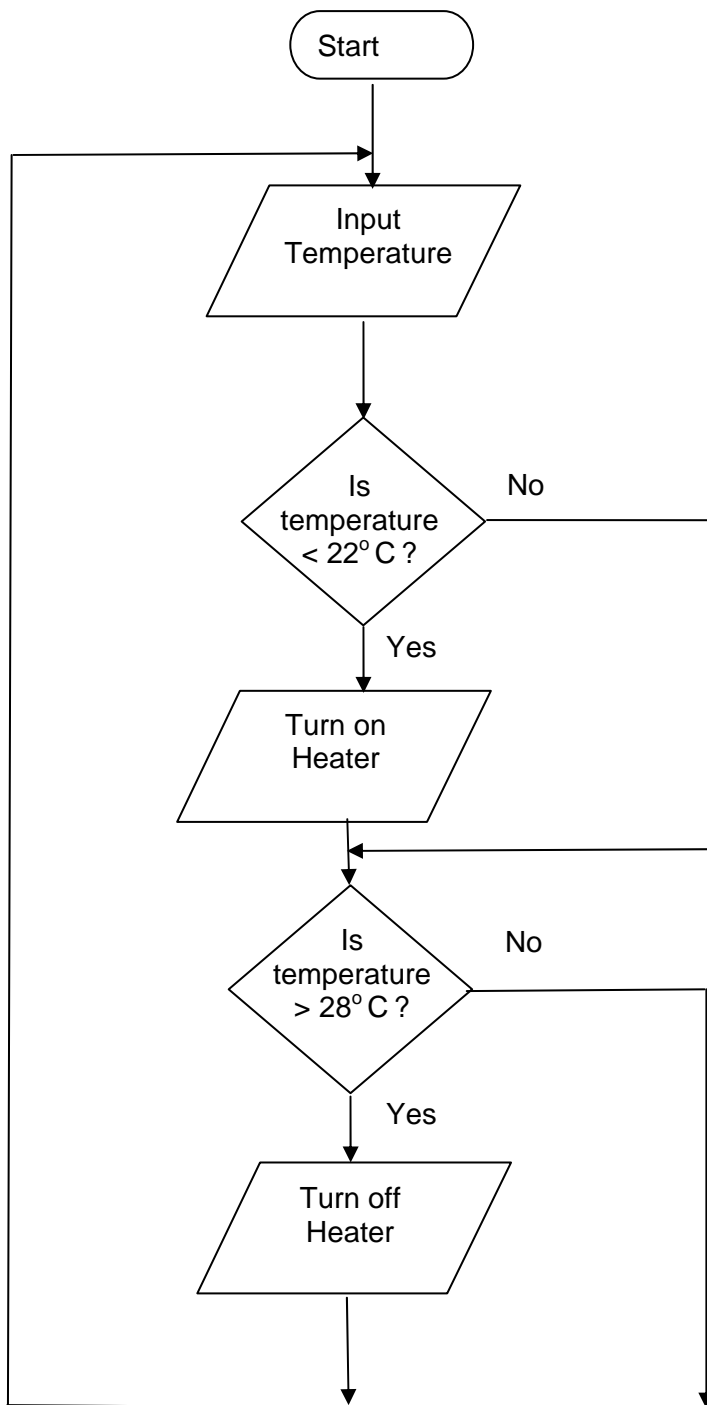
QUESTION		ANSWER	Poss. Mark	Max Mark
4	(a)			
		Interview / ask staff (users)	1	
		Questionnaires / survey	1	
		Study documentation	1	
		Observation	1	
		Hold meeting / set up a focus group	1	
		Not try it herself		
				3

QUESTION		ANSWER		Poss. Mark	Max Mark
4	(b)	Analysis	1 & 5	1,1	
		Design	3 & 4	1,1	
		Implementation	2 & 6	1,1	
					6

QUESTION		ANSWER	Poss. Mark	Max Mark
4	(c)			
	(i)	Extreme - 6 or 36	1	1
	(ii)	Typical - 12, 17, 24, 13, 19, 29	1	1
	(iii)	Invalid - 41, 37	1	1

QUESTION		ANSWER		Poss. Mark	Max Mark
4	(d)	Parallel	Old system and new system run together.	1,1	
		Direct	Old system stopped and replaced by new system	1,1	
		Phased	Different parts of the system introduced at different times.	1,1	
		Pilot	The new system is run in part of the organisation	1,1	
					4
				Total	16

Question C2(f)



Further copies of this publication are available from  
Edexcel Publications, Adamsway, Mansfield, Notts, NG18 4FN

Telephone 01623 467467  
Fax 01623 450481

Email [publications@linneydirect.com](mailto:publications@linneydirect.com)

Order Code UG021482 Summer 2009

For more information on Edexcel qualifications, please visit [www.edexcel.com/quals](http://www.edexcel.com/quals)

Edexcel Limited. Registered in England and Wales no.4496750  
Registered Office: One90 High Holborn, London, WC1V 7BH