

# Mark Scheme (Results)

June 2011

GCSE ICT 1185 Paper 2H  
Written Paper

Edexcel is one of the leading examining and awarding bodies in the UK and throughout the world. We provide a wide range of qualifications including academic, vocational, occupational and specific programmes for employers.

Through a network of UK and overseas offices, Edexcel's centres receive the support they need to help them deliver their education and training programmes to learners.

For further information, please call our GCE line on 0844 576 0025, our GCSE team on 0844 576 0027, or visit our website at [www.edexcel.com](http://www.edexcel.com).

If you have any subject specific questions about the content of this Mark Scheme that require the help of a subject specialist, you may find our **Ask The Expert** email service helpful.

Ask The Expert can be accessed online at the following link:  
<http://www.edexcel.com/Aboutus/contact-us/>

Alternatively, you can contact our ICT Subject Advisor directly by sending an email to Gareth on [ICTSubjectAdvisor@EdexcelExperts.co.uk](mailto:ICTSubjectAdvisor@EdexcelExperts.co.uk).

You can also telephone 0844 372 2186 to speak to a member of our subject advisor team.

June 2011

Publications Code UG028246

All the material in this publication is copyright

© Edexcel Ltd 2011

## General Marking Guidance

- All candidates must receive the same treatment. Examiners must mark the first candidate in exactly the same way as they mark the last.
- Mark schemes should be applied positively. Candidates must be rewarded for what they have shown they can do rather than penalised for omissions.
- Examiners should mark according to the mark scheme not according to their perception of where the grade boundaries may lie.
- There is no ceiling on achievement. All marks on the mark scheme should be used appropriately.
- All the marks on the mark scheme are designed to be awarded. Examiners should always award full marks if deserved, i.e. if the answer matches the mark scheme. Examiners should also be prepared to award zero marks if the candidate's response is not worthy of credit according to the mark scheme.
- Where some judgement is required, mark schemes will provide the principles by which marks will be awarded and exemplification may be limited.
- When examiners are in doubt regarding the application of the mark scheme to a candidate's response, the team leader must be consulted.
- Crossed out work should be marked **UNLESS** the candidate has replaced it with an alternative response.

## Section A

Question Number	Answer	Mark
Q1	D	1

Question Number	Answer	Mark
Q2	C	1

Question Number	Answer	Mark
Q3	C	1

Question Number	Answer	Mark
Q4	D	1

Question Number	Answer	Mark
Q5	C	1

Question Number	Answer	Mark
Q6	B	1

Question Number	Answer	Mark
Q7	D	1

Question Number	Answer	Mark
Q8	B	1

Question Number	Answer	Mark
Q9	B	1

Question Number	Answer	Mark
Q10	C	1

Question Number	Answer	Mark
Q11	D	1

Question Number	Answer	Mark
Q12	B	1

Question Number	Answer	Mark
Q13	D	1

Question Number	Answer	Mark
Q14	A	1

Question Number	Answer	Mark
Q15	B	1

Question Number	Answer	Mark
Q16	D	1

Question Number	Answer	Mark
Q17	A	1

Question Number	Answer	Mark
Q18	C	1

Question Number	Answer	Mark
Q19	D	1

Question Number	Answer	Mark
Q20	A	1

### Section B

Question Number	Answer	Do not accept	Additional Guidance	Mark
QB1 (a)(i)	Proof read (1) Compare data with hand written forms (1) Check data with members(1) Double entry (1)		<b>Award mark for comparison only if comparison is with the original.</b>	<b>2</b>

Question Number	Answer	Do not accept	Additional Guidance	Mark
QB1 (a)(ii)	Check by software / computer (1) On data entry (1) Follows a set of rules (1) To make sure data is acceptable / sensible / reasonable / of the right type (1)	valid / correct	<b>Allow data entered</b>	<b>2</b>

Question Number	Answer	Do not accept	Additional Guidance	Mark
QB1 (b)	Logical / Boolean (1)			<b>1</b>

Question Number	Answer	Do not accept	Additional Guidance	Mark
QB1 (c)	Set pattern of letters, numbers, spaces (1) Data entry restricted (1) Validation technique (1) Explanation involving Sarah's post code (1) LLN NLL (1)			<b>3</b>

Question Number	Answer	Do not accept	Additional Guidance	Mark
QB1 (d)	<b>Type</b>	<b>Example</b>	example with incorrect (or no) type	6
	Extreme (1)	00000 / 00001 or 99999 (1)		
	Typical / normal / sensible / valid (1)	any value 00001 to 99998 (1)		
	Invalid/ erroneous (1)	any text / >99999 / < 5 digits (1)		

Question Number	Answer	Do not accept	Additional Guidance	Mark
QB2 (a) (i)	<p>Share documents / files / folders / data (1)</p> <p>Security can be centrally managed (1)</p> <p>Files (to share) can be uploaded centrally (1)</p> <p>Backup can be centrally managed (1)</p> <p>Software can be installed easily / faster / centrally (1)</p> <p>Can use any workstation / hot-desking (1)</p> <p>Communicate with other workstations without using the internet / internal email (1)</p> <p>Monitor / control users or workstations (1)</p> <p>Intranet (1)</p> <p>Only 1 internet connection needed (1)</p>	<p>Share software</p> <p>email</p>	<b>No mark for "access rights"</b>	3

Question Number	Answer	Do not accept	Additional Guidance	Mark
<b>QB2 (a)</b> <b>(ii)</b>	Cost of installation (1) Need for network manager / technician (1) Increased need for security (1) Performance eg lots of users / sharing peripherals (1) Reliance on server (1) Users need to be trained (1) Viruses more likely / spread quickly (1) Accounts can be hacked by other users (1) <b>Not just</b> need for security – should be increased risk <b>Not</b> Increased risk of hacking from outside			<b>2</b>



Question Number	Answer	Do not accept	Additional Guidance	Mark
B2 (b)	<p>Type in email address / select from contact list or address book/ select <u>recipient</u> (1)</p> <p>Enter <u>subject</u> (1)</p> <p><u>Compose</u> / <u>create</u> message (1)</p> <p>Select attachments / click attach file / click paper clip / insert attachment (1)</p> <p><u>Browse</u> / locate / find / search for file (1)</p> <p><u>Select</u> / Attach file (1)</p> <p>Send (1)</p>		<p><b>Order must be sensible for highlighted items</b></p> <p><b>Send must be at the end</b></p>	4
QWC	<p>Reasonable English (1) / Good English (2)</p> <p><b>1 mark</b> for 2 technical terms, spelt correctly, from:</p> <p>Technical terms underlined</p> <p>Good English for prose:</p> <p>Consistency – capitals and full stops</p> <p>&lt;3 spelling errors</p> <p>Good English for bullet points:</p> <p>Consistency - lower / upper case at start and with / without full stops</p> <p>&lt;3 spelling errors.</p> <p>One mark for a coherent answer that does not meet the above criteria</p>			3

Question Number	Answer	Do not accept	Additional Guidance	Mark											
QB2 (c)	<table border="1"> <tr> <td rowspan="6">Eye Strain or headaches (1)</td> <td>Anti-glare screens / screen filter/ high quality resolution (1)</td> </tr> <tr> <td>Suitable lighting (1)</td> </tr> <tr> <td>Avoid sunlight reflecting on screen/ blinds at windows (1)</td> </tr> <tr> <td>Swivelling screens (1)</td> </tr> <tr> <td>Focus on distant objects (1)</td> </tr> <tr> <td>Adjust brightness (1)</td> </tr> <tr> <td rowspan="3">RSI (1)</td> <td>Wrist rests (1)</td> </tr> <tr> <td>Appropriate ergonomic furniture (1)</td> </tr> <tr> <td>Wrist/ hand exercises (1)</td> </tr> </table>	Eye Strain or headaches (1)	Anti-glare screens / screen filter/ high quality resolution (1)	Suitable lighting (1)	Avoid sunlight reflecting on screen/ blinds at windows (1)	Swivelling screens (1)	Focus on distant objects (1)	Adjust brightness (1)	RSI (1)	Wrist rests (1)	Appropriate ergonomic furniture (1)	Wrist/ hand exercises (1)			4
Eye Strain or headaches (1)	Anti-glare screens / screen filter/ high quality resolution (1)														
	Suitable lighting (1)														
	Avoid sunlight reflecting on screen/ blinds at windows (1)														
	Swivelling screens (1)														
	Focus on distant objects (1)														
	Adjust brightness (1)														
RSI (1)	Wrist rests (1)														
	Appropriate ergonomic furniture (1)														
	Wrist/ hand exercises (1)														

Question Number	Answer	Do not accept	Additional Guidance	Mark				
QB2 (d)	<table border="1"> <tr> <td>Hackers</td> <td>           Firewall (1)            Passwords (1)            Encryption (1)         </td> </tr> <tr> <td>Identity theft / phishing</td> <td>           Anti- Adware / spyware / phishing (1)            Don't reply to suspicious emails (1)         </td> </tr> </table>	Hackers	Firewall (1) Passwords (1) Encryption (1)	Identity theft / phishing	Anti- Adware / spyware / phishing (1) Don't reply to suspicious emails (1)	<p><b>Action without the correct risk</b></p> <p><b>Anything to do with viruses as it is in the question</b></p>		6
Hackers	Firewall (1) Passwords (1) Encryption (1)							
Identity theft / phishing	Anti- Adware / spyware / phishing (1) Don't reply to suspicious emails (1)							

Question Number	Answer	Do not accept	Additional Guidance	Mark
QB3 (a)	Replication (1)			1

Question Number	Answer	Do not accept	Additional Guidance	Mark
QB3 (b)	=SUM(G2:G8) (1)	G2+G3+G4+G5+G6+G7+G8		1

Question Number	Answer	Do not accept	Additional Guidance	Mark
QB3 (c) (i)	<p><b>In application software:</b>            Select create new macro (1)            Name macro (1)            Name / allocate key strokes / button (1)            Record (1)            Set of key strokes / actions taken / carry out task (1)            Stop recording (1)</p> <p><b>In visual basic:</b>            Open visual basic (1)            Name macro (1)            Write sub routine / code (1)            Save (1)            Allocate key combination (1)</p>		<p>Order must be logical</p> <p>If not logical award 1 mark for 1 correct step</p>	3

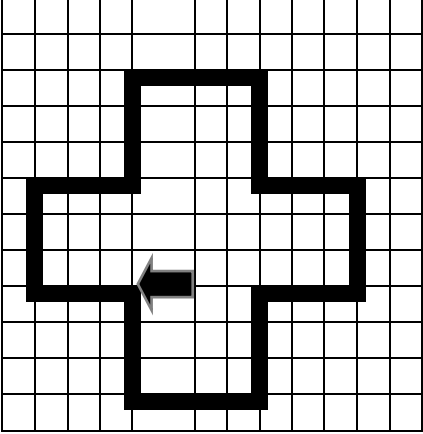
Question Number	Answer	Do not accept	Additional Guidance	Mark
<b>QB3</b> <b>(c)(ii)</b>	Button (1) Icon on tool bar (1) From drop down menu (1) Key combination (1) Select macro & run (1) Set to run in response to an event (1) Call from another application (1)			<b>2</b>

### SECTION C

Question Number	Answer	Do not accept	Additional Guidance	Mark
QC1(a) (i)	A small picture / graphic / symbol / image (1) Used to represent a task / function / command / program (1)	Something you can click on as this is in the question		2

Question Number	Answer	Do not accept	Additional Guidance	Mark
QC1 (a) (ii)	Feature	Explanation	Feature must be correct to get explanation mark	6
	Windows (1)	Allow to open several applications/mult-itask (1)		
	Menus/Drop down menu (1)	Restricts choice (1) Easy to move around software(1)		
	Pointers(1)	Allows movement around screen (1) Highlight areas (1) (Easy to) select from menus / icons (1)		

Question Number	Answer	Do not accept	Additional Guidance	Mark
QC1 (b)	Operating system / system software (1)			1

Question Number	Answer	Do not accept	Additional Guidance	Mark
QC2 (a)	 <p>1 mark for each correct cycle</p>			4

Question Number	Answer	Do not accept	Additional Guidance	Mark
QC2 (b)	<p>Repeat 2 , F2, R90, F4, R90 End (3)</p> <p>Repeat 2 , F4, R90, F2, R90 End (3)</p> <p>Repeat 2 , F2, L90, F4, L90 End (3)</p> <p>Repeat 2 , F4, L90, F2, L90 End (3)</p> <p>Repeat 2 , F2, R90, F4, R90 (2)</p> <p>Repeat 2 (1)</p> <p>End (1) Only if Repeat is present</p> <p>Correct and complete instructions (1)</p> <p>F2, R90, F4, R90, F2, R90, F4, (R90) - or anything else that works (1)</p>		(R90) not needed but allowed in the last example	3

Question Number	Answer	Do not accept	Additional Guidance	Mark
QC3 (a)	24 / 7 (1) ALLOW ONE OF: Can do most banking from home / Don't have to travel to bank (1) May get better rates online (1) Instant transfer of funds/pay bills(1) Check account balance/print statement (1) Don't have to wait in queues (1) Can access account from anywhere (1)			3

Question Number	Answer	Do not accept	Additional Guidance	Mark
QC3 (b)	May not have internet access / Do not know how to use internet (1) May not have computer / can't use a computer (1) Prefer face to face (1) Fear of Identity Theft/Fraud (1)	Reasons such as pay in cash that would apply to all customers  Do not know how to use online banking  Anything to do with viruses	Hacking must be qualified	3

Question Number	Answer	Do not accept	Additional Guidance	Mark
QC3 (c)(i)	Saving in costs of branches / premises (1) Fewer staff(1) Concentrate advertising or promotion on online banking (1) May attract a different type of customer/wider customer base(1)			3

Question Number	Answer	Do not accept	Additional Guidance	Mark
QC3 (c)(ii)	Branch staff may lose their jobs (1) May need retraining (1) May have to relocate (1)			2

Question Number	Answer	Do not accept	Additional Guidance	Mark
QC3 (d)	Processed fairly and lawfully (1) Obtained fairly and lawfully (1) Processed in accordance with rights of data subject (1) Data must be accurate (1) Data must be kept up to date (1) Data must be kept only as long as necessary (1) Must be kept secure (1) Cannot be sent outside of the European Union (unless has same level of protection) (1) Data must be shown to subjects on request (1) Must specify the purpose for holding the data (1)	Data may not be passed to others.  Should be adequate and relevant (in question)	<b>Allow: must be kept safe</b>	2



Question Number	Answer	Do not accept	Additional Guidance	Mark								
QC3 (e)	<table border="1"> <thead> <tr> <th>Feature</th> <th>Customer advantage</th> </tr> </thead> <tbody> <tr> <td>Email / contact us (1)</td> <td>24/7 (1) Asks specific questions (1)</td> </tr> <tr> <td>Customer support pages (1)</td> <td>No need for phone calls / visit to bank (1) Help with bank services (1)</td> </tr> <tr> <td>Search facility (1)</td> <td>Easy to find what you need (1) Quicker to go to a page if you know what you are looking for (1)</td> </tr> </tbody> </table>	Feature	Customer advantage	Email / contact us (1)	24/7 (1) Asks specific questions (1)	Customer support pages (1)	No need for phone calls / visit to bank (1) Help with bank services (1)	Search facility (1)	Easy to find what you need (1) Quicker to go to a page if you know what you are looking for (1)		No mark for advantage if incorrect feature	4
Feature	Customer advantage											
Email / contact us (1)	24/7 (1) Asks specific questions (1)											
Customer support pages (1)	No need for phone calls / visit to bank (1) Help with bank services (1)											
Search facility (1)	Easy to find what you need (1) Quicker to go to a page if you know what you are looking for (1)											

Question Number	Answer	Do not accept	Additional Guidance	Mark
QC4 (a) (i)	Automatic capture (by sensor) / sensor takes reading (1) @ set times (1) For a period of time (1) Data sent to the computer (1) Data stored / recorded (1) For future use (1)	Sensors record data		3

Question Number	Answer	Do not accept	Additional Guidance	Mark
QC4 (a) (ii)	Can monitor over very long periods (1) Monitor 24 hours a day (1) Readings very accurate/no human errors/more reliable (1) No requirement for human to be there / don't have to go out in bad weather (1)	Dangerous / inaccessible situations		3

Question Number	Answer	Do not accept	Additional Guidance	Mark
QC4 (b) (i)	Thermistor (1)	Thermometer		1

Question Number	Answer	Do not accept	Additional Guidance	Mark
QC4 (b) (ii)	Analogue - Digital Converter / ADC (1)			1

Question Number	Answer	Do not accept	Additional guidance	Mark
QC4 (b) (iii)	(Sensor) measures analogue signal / temperature is analogue (1) Signal converted to digital (1) Computers need digital input /so computer can understand (1)			2

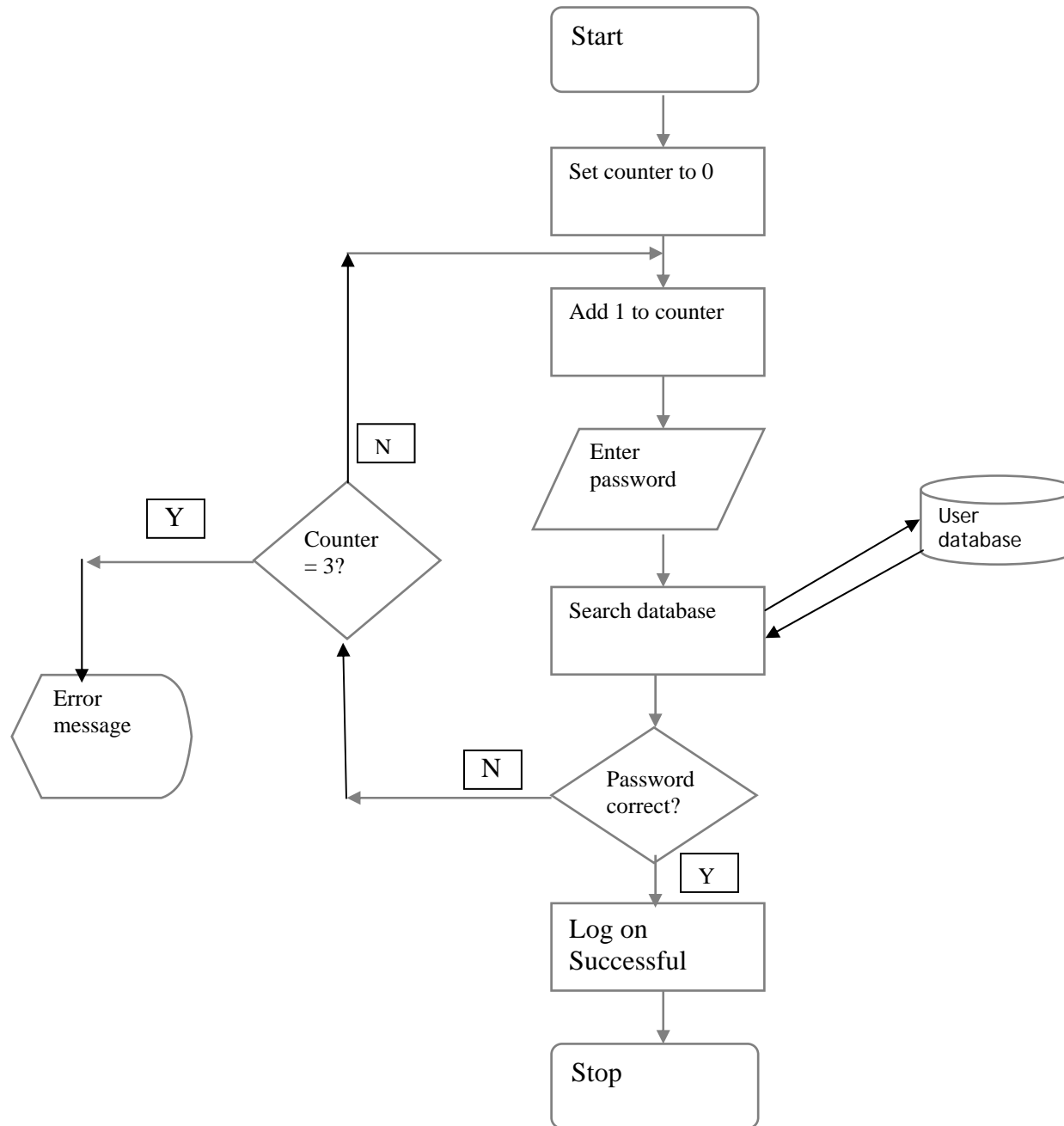
Question Number	Answer	Do not accept	Additional Guidance	Mark
QC4 (b) (iv)	Logging period (1) Logging interval (1)			2

Question Number	Answer	Do not accept	Additional Guidance	Mark
QC4 (c) (i)	=AVG(B2:H2) (1) =I2/7 (1) =Sum(B2:H2)/7 (1) =(B2+C2+D2+E2+F2+G2+H2/7) (1)	=B2+C2+D2+E2+F2+G2+H2/7	Allow without =	<b>1</b>

Question Number	Answer	Do not accept	Additional Guidance	Mark
QC4 (c) (ii)	<p><u>Highlight cells</u> (1)</p> <p>Correct cells identified - A1:A5 and I1: I5 or A2:A5 and I2: I5 (1)</p> <p><u>Insert Chart</u> / <u>Select Chart Icon</u> / <u>menu</u> / <u>wizard</u> (1)</p> <p>Select bar chart (1)</p> <p>Add / edit title (1)</p> <p>Add / edit axis (1)</p> <p>Any other sensible editing eg add/delete legend (1)</p>	<p>Highlight information/data needed</p> <p>Change colours unless qualified</p> <p>Resize or move</p>	<p>Order must be correct / logical.</p>	<p><b>6</b></p>
QWC	<p>Reasonable English (1) / Good English (2)</p> <p><b>1 mark</b> for 2 technical terms, spelt correctly, from: Technical terms underlined</p> <p>Good English for prose: Consistency – capitals and full stops &lt;3 spelling errors</p> <p>Good English for bullet points: Consistency - lower / upper case at start and with / without full stops &lt;3 spelling errors</p>			<p><b>3</b></p>

<b>Question Number</b>	<b>Answer</b>	<b>Do not accept</b>	<b>Additional Guidance</b>	<b>Mark</b>
<b>QC5 (a) (i)</b>	1 mark for every 2 boxes with correct text			<b>5</b>

<b>Question Number</b>	<b>Answer</b>	<b>Do not accept</b>	<b>Additional Guidance</b>	<b>Mark</b>
<b>QC5 (a) (ii)</b>	1 mark for correct Y&N on a decision box (2) 1 mark for any 3 correct arrows (1)		Arrows as shown in MS	<b>3</b>





Further copies of this publication are available from  
Edexcel Publications, Adamsway, Mansfield, Notts, NG18 4FN

Telephone 01623 467467

Fax 01623 450481

Email [publication.orders@edexcel.com](mailto:publication.orders@edexcel.com)

Order Code UG028246 June 2011

For more information on Edexcel qualifications, please visit  
[www.edexcel.com/quals](http://www.edexcel.com/quals)

Pearson Education Limited. Registered company number 872828  
with its registered office at Edinburgh Gate, Harlow, Essex CM20 2JE

Ofqual  




Llywodraeth Cynulliad Cymru  
Welsh Assembly Government



1185 2H  
1106