

GCSE

Edexcel GCSE

Information and
Communication Technology
(1185-2F)

Summer 2005

advancing learning, changing lives

Mark Scheme (Results)

Mark Scheme - June 2005 1185-2F
Section A

Question	Answer
1	C
2	B
3	D
4	B
5	D
6	A
7	A
8	B
9	B
10	C
11	C
12	C
13	D
14	C
15	C
16	B
17	B
18	A
19	A
20	B

**Mark Scheme - June 2005 1185-2F
Section B**

QUESTION		ANSWER	POSS. MARK	MAX
1	a			
	i	4	1	
	ii	Thomson	1	
				2
	b			
		223. Only accept 223 as an answer not the name.	1	
				1
	c			
	i	Customer ID	1	
	ii	Unique to the customer.	1	
		It is the only field that is unique to the customer.	2/0	
		Could be 2 customers with the same surname and they need to be identified separately.	1,1	3
	d			
	i	Format of data is shortened / changed to :	1	
		Aid data entry (not just 'easier')	1	
		Aid computer processing	1	
		Avoid errors	1	
				2
	ii	Quicker data entry (not easy)	1	
		Mistakes are less likely.	1	
		Saves storage space.	1	
		Saves space on print outs / screen	1	
				2
			Total	10
2	a			
	i	Choc-Ice (number 2)	1	
		Orange (Can) (number 4)	1	
		Deduct 1 mark for each incorrect entry if more than 2 given		
	ii	Cell D4 / 4D	1	
	iii	Alphanumeric / Text / String (Not character)	1	4
	b			
	i	Bar code scanner / bar code reader / laser scanner	1	
		Not hand held scanner		
	ii	Laser reads bar code	1	
		Item identified	1	
		Database accessed	1	
		Price displayed	1	
		Reduce number in stock	1	
		Allow sensible technical answers		
				3
			Total	7

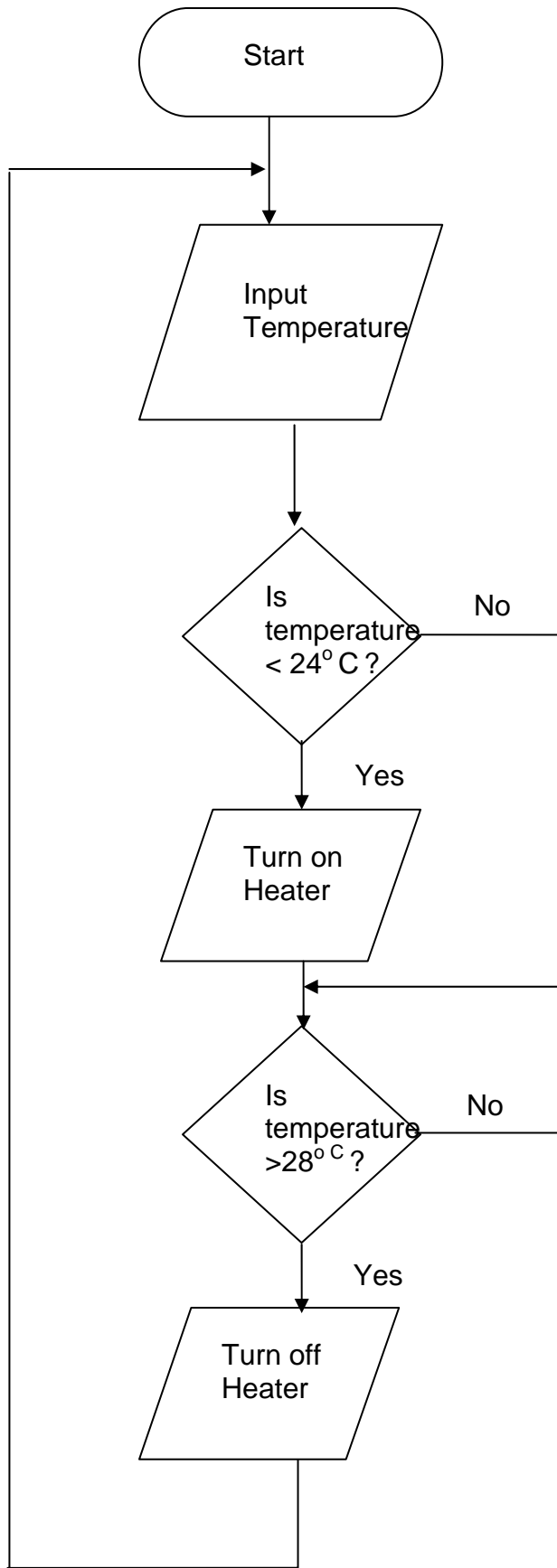
**Mark Scheme - June 2005 1185-2F
Section B**

QUESTION	ANSWER	POSS. MARK	MAX
5	Mark for sensible layout	1	1
	(Signature would lose sensible layout mark)		
	Ease of use - Any 3 of:		
	Command buttons	1	
	Sensible field lengths	1	
	Coding e.g. gender	1	
	Scroll bars	1	
	Drop down menus	1	
			3
	Content : -		
	7 given - 4 marks		
	5 given - 3 marks		
	3 given - 2 marks		
	1 given - 1 mark		
	Form Title		
	First name / initial		
	Surname		
	Title		
	Street & Town		
	Post Code		
	Address (if not street & town)		
	County		
	Contact No. (One only)		
	E-mail address		
	Date of Birth		
	Gender		
			4
		Total	8

**Mark Scheme - June 2005 1185-2F
Section C**

QUESTION		ANSWER	POSS. MARK	MAX
1	a	Give 1 mark for every two instructions that are correct Shown on separate page		4
	b	U8, R9	1,1	
		R9, U8	1,1	
		U (total of 8)	1	
		R (total of 9)	1	
			Total	6
	2	1 mark for each correct entry	Turn heater on	1
Is temperature >28° C			1	
Turn heater off			1	
		1 mark for 'no' in correct position	1	
		1 mark for arrow in correct direction	1	
		Shown on separate page.		5
			Total	5

1185/3185 Foundation & Higher Tier Flow Chart



**Mark Scheme - June 2005 1185-2F
Section C**

QUESTION		ANSWER	POSS. MARK	MAX
5	a			
	i	Safety to the public or the driver (not both)	1	
		The environment can be varied	1	
		Crashing the trains	1	
		Cheaper after initial costs	1	
				3
	ii	High initial costs of buying the simulator	2,0	
		It is not real (must expand for the mark)	1,1	
				2
	b			
		Science experiments	1	
		Weather forecasting	1	
		Virtual reality	1	
		Games	1	
		Financial planning	1	
		Crop yields	1	
				2
			Total	7

**Mark Scheme - June 2005 1185-2F
Section C**

QUESTION		ANSWER	POSS. MARK	MAX
6	a			
	i	Temperature / heat sensor / temperature probe	1	
		Thermistor	1	
		Not thermometer		1
	ii	Any 3 of:		
		Don't have to be there	1	
		If weather conditions are bad it doesn't matter	1	
		Automated routine	1	
		Timed intervals	1	
		Can record 24 hours a day	1	
		Less human error / more accurate		3
		More reliable		
		No Health and safety issues		
	b			
	i	Spreadsheet / database	1	
				1
	ii	Calculations	1	
		Graphs and charts	1	
		Formulae	1	
		Automatic recalculation	1	
		Stores data in organised way	1	
				2
			Total	7
7	a			
		Producing charts	No	1
		Input/ Output control	Yes	1
		Formatting a floppy disk.	No	1
		Printer Management	Yes	1
		Virus checking	No	1
		File management	Yes	1
		Allocating memory	Yes	1
		Internet connection	No	1
				8
	b	Any 2 of:		
		Windows	1	
		Icons	1	
		Menu	1	
		Pointers	1	
				2
			Total	10

**Mark Scheme - June 2005 1185-2F
Section C**

QUESTION	ANSWER	POSS. MARK	MAX
8	a		
	Input ----- process ----- output	1	
	Process ----- backing store	1	
	All 4 arrows	1	
			3
	b		
	i		
	Any within reason	1	1
	ii		
	Any within reason.	1	
			1
	iii		
	Any 2 of:		
	Hard Drive	1	
	Disk Drive	1	
	Pen drive	1	
	Floppy disk drive	1	
	CD R drive	1	
	Zip drive	1	
	Streamer	1	
	Dat drive	1	
	Not CD ROM drive		
	(Must have device)		2
		Total	7

Quality of Written Communication for Full Course 1185 (2F / 2H)

Quality of Written Communication 6 marks are available on each written paper		
Level 1	Information given has limited relevance and is presented with a little clarity. Candidates spell, punctuate and use the rules of grammar with some accuracy.	1 – 2 marks
Level 2	Some relevant information is presented, with varying degrees of clarity. Candidates spell, punctuate and use the rules of grammar with reasonable accuracy; they use the words and phrases – including specialist terms – with some accuracy.	3 – 4 marks
Level 3	Some relevant information is presented with clarity of expression. Candidates spell and punctuate with considerable accuracy; and use a range of grammatical constructions, competently employing specialist and ICT terms.	5 – 6 marks

Total for paper = 120 + 6 Quality of Written Communication = 126 marks