



General Certificate of Secondary Education
2009

Information and Communication Technology

Short Course

Foundation Tier

[G5301]

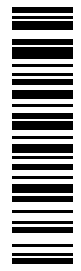
TUESDAY 19 MAY, AFTERNOON

StudentBounty.com

71	
----	--

Candidate Number

--



G5301

TIME

1 hour.

INSTRUCTIONS TO CANDIDATES

Write your Centre Number and Candidate Number in the spaces provided at the top of this page.
Write your answers in the spaces provided in this question paper.
Answer **all fourteen** questions.

INFORMATION FOR CANDIDATES

The total mark for this paper is 100, including a maximum of 5 marks for the quality of written communication.
Figures in brackets printed down the right-hand side of pages indicate the marks awarded to each question or part question.

For Examiner's use only	
Question Number	Marks
1	
2	
3	
4	
5	
6	
7	
8	
9	
10	
11	
12	
13	
14	
QWC	
Total Marks	

Answer **all fourteen** questions

Examiner Only	
Marks	Remark

For question 1 insert the appropriate letter in the space provided.

1 (a) Select the **most appropriate** input device for free-hand drawing on a graphics package.

- A** Mouse
- B** Keyboard
- C** Light Pen
- D** Hand-held Scanner

Answer _____ [1]

(b) Select the **most appropriate** output device for creating a hard copy of a receipt at a supermarket till.

- A** Printer
- B** LCD
- C** Plotter
- D** VDU

Answer _____ [1]

(c) Select the **most appropriate** storage device for storing pictures on a mobile phone.

- A** SIM Card
- B** Network Card
- C** Memory Card
- D** Graphics Card

Answer _____ [1]

(d) Select **one** task that cannot be carried out when banking online.

- A Depositing money
- B Ordering a new cheque book
- C Paying bills
- D Cancelling direct debits

Answer _____ [1]

(e) Select **one** advantage of storing graphics in bitmap format.

- A Images are built up in layers
- B Image quality is good
- C Images can be edited at pixel level
- D Images take up very little storage space

Answer _____ [1]

(f) A web browser:

- A Allows users to enlarge text, cannot be used without being connected to the Internet
- B Allows users to enlarge text, can be used without being connected to the Internet
- C Does not allow users to enlarge text, allows users to enter URLs
- D Does not allow users to enlarge text, does not allow users to enter URLs

Answer _____ [1]

Examiner Only	
Marks	Remark

[Turn over

(j) A csv file is a:

- A completely separated variable file
- B comma separated variable file
- C comma sequenced variable file
- D completely sequenced variable file

Answer _____ [1]

Examiner Only	
Marks	Remark

Examiner Only	
Marks	Remark

2 Computers are used to control **traffic light systems**. An **interface** is also used to help process the data.

(a) From the table below, tick (✓) **two** sensors which could be used in the traffic light system.

Sensor	Tick (✓)
Heat	
Light	
Pressure	
Motion	

[2]

(b) What does the **interface** do in the control system?

[2]

3 Mark is a music teacher. He wishes to use a computer to help him to create training material.

(a) From the list below, select the **most appropriate** file format for each output which Mark is going to produce. (Use each file format **only once**)

jpeg mp3 doc

Output	File Format
Printed copies of instructions on how to play his music	
Sound files of him playing his music	
Images of the instruments he teaches	

[3]

Mark has decided to set up a website to promote his business.

(b) Give **two** advantages to Mark to encourage him to do this.

1. _____

 2. _____

- [2]

Mark will need equipment to connect to the Internet.

(c) From the list he has written below, select using a tick (✓), the **two** items he will require to **connect** to the Internet.

Equipment	Tick (✓)
Word processor	
Browser	
MODEM	
Telecommunications link	

[2]

Mark decides to sell his products on **DVD** from a stand in the local shopping centre.

(d) What do the letters **DVD** stand for?

_____ [1]

Examiner Only	
Marks	Remark

4 A local solicitors' office has installed a new **LAN** with 30 computers and a server. The LAN also provides Internet access for the solicitors.

(a) (i) What do the letters **LAN** stand for?

_____ [1]

(ii) Give **one** advantage of having a network in the solicitors' office.

_____ [1]

(iii) Give **one** disadvantage of having a network in the office.

_____ [1]

(b) The solicitors are going to set up a **video conference** with another office in France.

(i) What is **video conferencing**?

_____ [1]

(ii) List **three** devices which would be required to provide video conferencing in the office.

1. _____
2. _____
3. _____ [3]

(iii) Give **one** advantage to the solicitors of using video conferencing instead of a telephone to talk to solicitors in other countries.

_____ [1]

Examiner Only	
Marks	Remark

The company have had a **fax machine** for many years.

(iv) Give **one** disadvantage of using a fax machine instead of email.

_____ [1]

(v) Give **one use** for the fax machine where email is unlikely to be used in the solicitors' office.

_____ [1]

Examiner Only	
Marks	Remark

5 (a) A company, GAMESTATION LTD, which develops games software, cannot find people with the correct skills in the local area. They have decided to offer **teleworking** contracts.

(i) What is **teleworking**?

[2]

(ii) Give **two** advantages **to the company** of using teleworking.

[2]

Examiner Only	
Marks	Remark

GAMESTATION LTD are developing a driving **simulation** game for the PC.

Examiner Only	
Marks	Remark

(b) A lot of **RAM** and a **high resolution** monitor is needed to run the new game.

(i) What do the letters **RAM** stand for?

_____ [1]

(ii) What does **high resolution** mean when referring to the monitor?

_____ [1]

GAMESTATION LTD have decided to make the game available online. Players must fill out the online form below.

GAMESTATION LTD ONLINE REGISTRATION

First Name	
Surname	
House Number	
Street	
Town	
Postcode	
Date of Birth	
Gender	<input type="radio"/> Male <input type="radio"/> Female
Email	
<input style="background-color: #cccccc;" type="button" value="Submit"/>	

(c) Which law must GAMESTATION LTD uphold when managing personal data?

_____ [1]

- 6 (a) Holiday Villa Hotels allow reservations to be made online, by email, by telephone, or by faxing the central reservations.

Holiday Villa Hotels give special offers online.

- (i) Give **one** other advantage **to the customer** of booking a hotel online.

_____ [1]

- (ii) State **one** reason why a customer may still choose to book by telephone.

_____ [1]

As well as using the (World Wide Web) WWW and Internet for business, the company provide an **Intranet** for employees.

- (b) (i) From the table below tick (✓) which **two** of the following statements are true about the WWW and the Internet.

Statement	Tick (✓)
The WWW is the information stored on the Internet	
The Internet is a set of web addresses	
The Internet is a network of computers and communication links	
The WWW is a set of web addresses	

[2]

- (ii) What is an **Intranet**?

 _____ [1]

Examiner Only	
Marks	Remark

7 Barry runs a small printing company. He wants to store details about his clients and when they first ordered from him, in a database.

(a) Complete the following paragraph using the words provided.
Use each word only once.

RECORDS FORMS FIELDS

Data is stored in tables of _____. Each record is made up of _____. _____ can be used to capture data on screen. [3]

(b) List **two** features of a database which Barry could use to provide his business with information.

1. _____
2. _____ [2]

Examiner Only	
Marks	Remark

- 8 “Clarendon Limos” are a small Limousine hire company. They have four cars for hire. Below is a spreadsheet with their car hire information for the month of November 2008.

	A	B	C	D	E	F	G
1	Clarendon Limos – Income November 2008						
2	Car	Cost Per Hour	Number of Hours Hired	Total Income	Fuel Cost Per Hour	Total Fuel Cost	Total Profit for each Car
3	Yellow Hummer Vehicle	£ 400.00	35	£ 14 000.00	£ 100.00	£ 3500.00	£ 10 500.00
4	Stretch Limousine	£ 500.00	19	£ 9 500.00	£ 120.00	£ 2 280.00	£ 7 220.00
5	Stretch Hummer Vehicle	£ 550.00	9	£ 4 950.00	£ 115.00	£ 1 035.00	£ 3 915.00
6	Pink Cadillac	£ 700.00	10	£ 7 000.00	£ 140.00	£ 1 400.00	£ 5 600.00
7							
8	Total Profit						£ 27 235.00

- (a) Cells **A8:F8** have been: (circle the correct answer from the list below)

Cleared Merged Pasted [1]

- (b) Using cell references, write down the **formula** used in each of the following cells.

(i) **D6** _____ [1]

(ii) **G6** _____ [1]

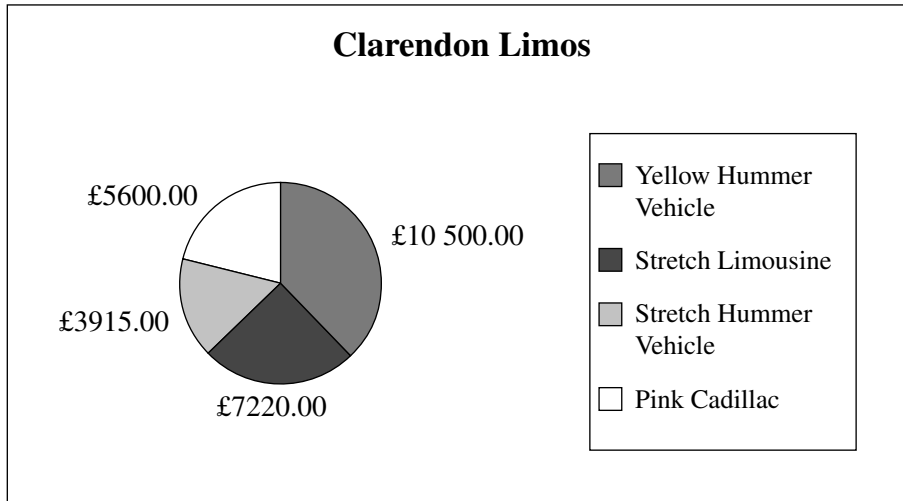
The **Cost Per Hour** for the Stretch Limousine has been changed to £600.00.

- (c) List **three** other cells that change as a result of this.

1. _____
2. _____
3. _____ [3]

Examiner Only	
Marks	Remark

The chart below has been produced from the spreadsheet data.



Examiner Only	
Marks	Remark

(d) (i) What type of chart is this?

_____ [1]

(ii) List the **cell references** of the two cell ranges used to produce this chart.

Cell range 1: _____

Cell range 2: _____ [2]

(iii) Name **one** other **chart type** which can be produced using data from cells on a spreadsheet.

_____ [1]

(iv) Give **one** advantage to Clarendon Limos of viewing information in chart form.

 _____ [1]

(v) Give **one** piece of information that Clarendon Limos can see by examining the chart.

 _____ [1]

9 Arlene is word processing her Chemistry coursework.

She wishes to include her candidate number in a header and page numbers in a **footer**.

(a) What is a **footer**?

[1]

After she has added her page numbers to the document she chooses to look at a print preview of the document.

(b) Give **one** reason why she might do this.

[1]

Arlene has copied a graphic from the Internet. When it is clicked she is automatically taken to the original website.

(c) Why does this happen?

[1]

When she runs the spellchecker it highlights a lot of words that Arlene knows are spelt correctly.

(d) Give **one** reason why the spellchecker might still highlight these.

[1]

(e) Give **one** example when the spellchecker may **not highlight** a word when it is spelt incorrectly.

[1]

Examiner Only	
Marks	Remark

BLANK PAGE

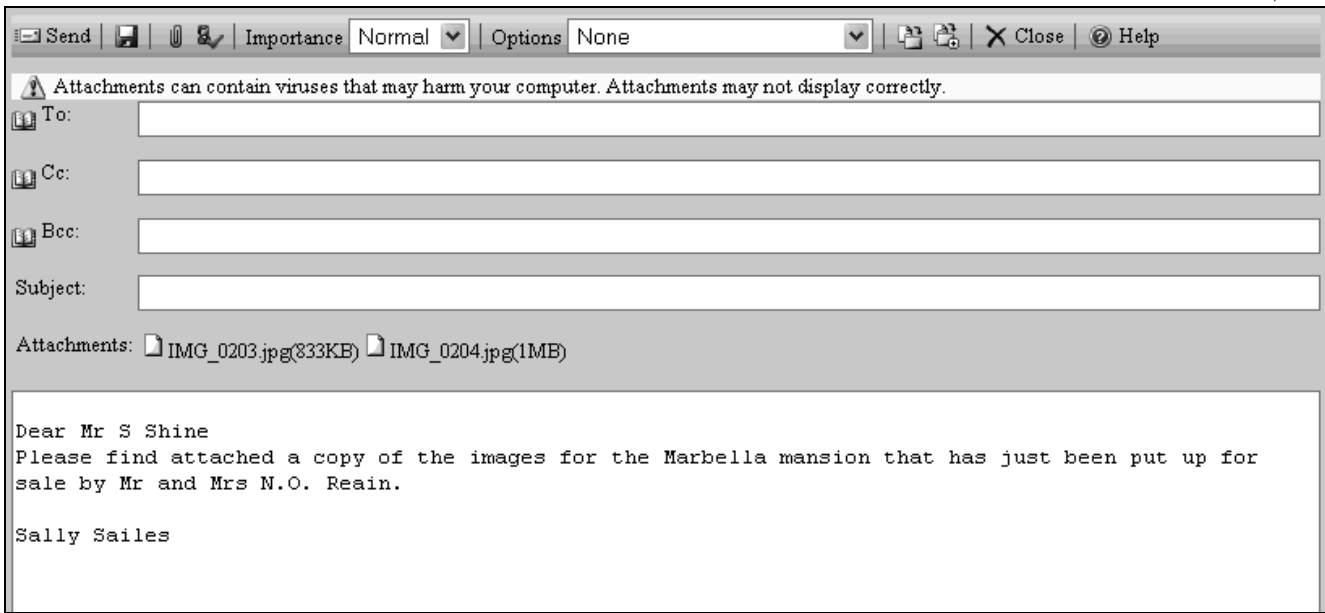
(Questions continue overleaf)

10 SunShine Properties sell houses all around the world. One of their employees wants to send an email to their manager at manager@sunshineproperties.co.uk.

Examiner Only	
Marks	Remark

(a) Read and complete the following email to the manager so that:

- (i) The employee is sending the email to the correct person and [1]
- (ii) The person receiving the email knows what it relates to before they open it [1]



The warning shown on the email tells the employee that **Attachments may not display correctly**.

(b) Give **one** reason why attachments may not display correctly when they are opened by the recipient.

_____ [1]

Examiner Only	
Marks	Remark

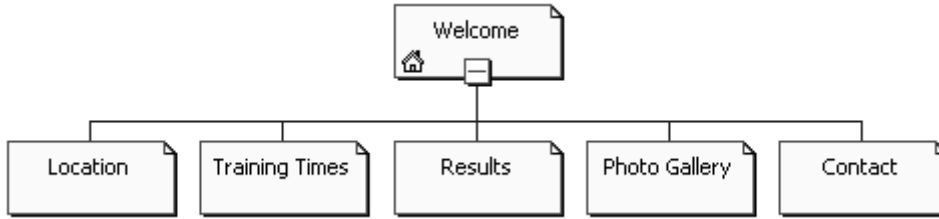
The agent needs to send a copy of the email to Mr and Mrs Reain as well as their manager, but does not want them to see the email address for their manager.

(c) Write the manager's address into the correct place in the section of the email shown below. [1]

Examiner Only	
Marks	Remark

To:	nreain@hotmail.com
Cc:	
Bcc:	
Subject:	

12 June is designing a website for her son’s sports club. The site she created has the following pages:



June is not sure what format she should use when she is saving the web pages.

(a) Tick (✓) **one** option below that is **not** an appropriate file format to use when saving web pages.

File Format	Tick (✓)
.htm	
.http	
.html	

[1]

June wants to add video footage of a training session to the Welcome Page of the website.

(b) Give **one** disadvantage of adding videos to a web page.

[1]

Examiner Only	
Marks	Remark

- (d) (i) The title **NOVEMBER 2008** on the calendar below has been
(circle the correct answer from the words below):

CENTRED LEFT JUSTIFIED RIGHT JUSTIFIED [1]

NOVEMBER 2008						
Mon	Tue	Wed	Thu	Fri	Sat	Sun
					1	2
3	4	5	6	7	8	9
10	11	12	13	14	15	16
17	18	19	20	21	22	23
24	25	26	27	28	29	30

- (ii) Look at the table below. Tick (✓) the **two** features which have been included on the calendar above.

Feature	Tick (✓)
Right Justify	
Underline	
Table	
Left Justify	
Italics	

[2]

Examiner Only	
Marks	Remark

14 Using the terms in the list below, choose **one** term that best matches the definition in the left-hand column (not all words in the list will be used).

Virus Protocol CD-Rom Encryption
Bandwidth Resolution Check Digit
Scanner Digital ISP

Definition	Term
A program designed to damage a computer system.	
A digit added to the beginning or end of a number to verify that the number entered is an authentic code.	
A way of encoding data before transmitting it on a network.	
A company which provides the user with a connection to the Internet.	
A measure of the quality of an image.	
A device used to capture data by passing light over the image.	
An optical storage device.	
A measure of the amount of data which can travel along a communication cable.	
A set of rules used for communicating over networks.	
A name used to describe data held as 1s and 0s.	

[10]

Examiner Only	
Marks	Remark
Quality of written communication	

THIS IS THE END OF THE QUESTION PAPER
