

Surname	Centre Number	Candidate Number
Other Names		0



GCSE

4321/02



S16-4321-02

HUMANITIES

UNIT 1: Patterns and Places

A.M. THURSDAY, 16 June 2016

1 hour

For Examiner's use only		
Question	Maximum Mark	Mark Awarded
Section A 1.	30	
Section B 2. or 3.	20	
Total	50	

INSTRUCTIONS TO CANDIDATES

Use black ink or black ball-point pen.

Write your name, centre number and candidate number in the spaces at the top of this page.

Answer Question 1 (Section A) **and either** Question 2 **or** Question 3 (Section B).

Write your answers in the spaces provided in this booklet. Use supplementary sheets when there is insufficient room in this booklet. Write your name at the top of each supplementary sheet, indicating clearly the number of the question you answer. Put the supplementary sheets inside this booklet.

INFORMATION FOR CANDIDATES

The number of marks is given in brackets at the end of each question or part-question.

You will be awarded marks for the quality of your written communication.

Your answers must be relevant and must make full use of the information given to be awarded full marks for a question.

You are reminded that you should always support your answers using your knowledge and understanding of the topic chosen.

PATTERNS AND PLACES

Answer Question 1 (Section A) and either Question 2 or Question 3 (Section B).

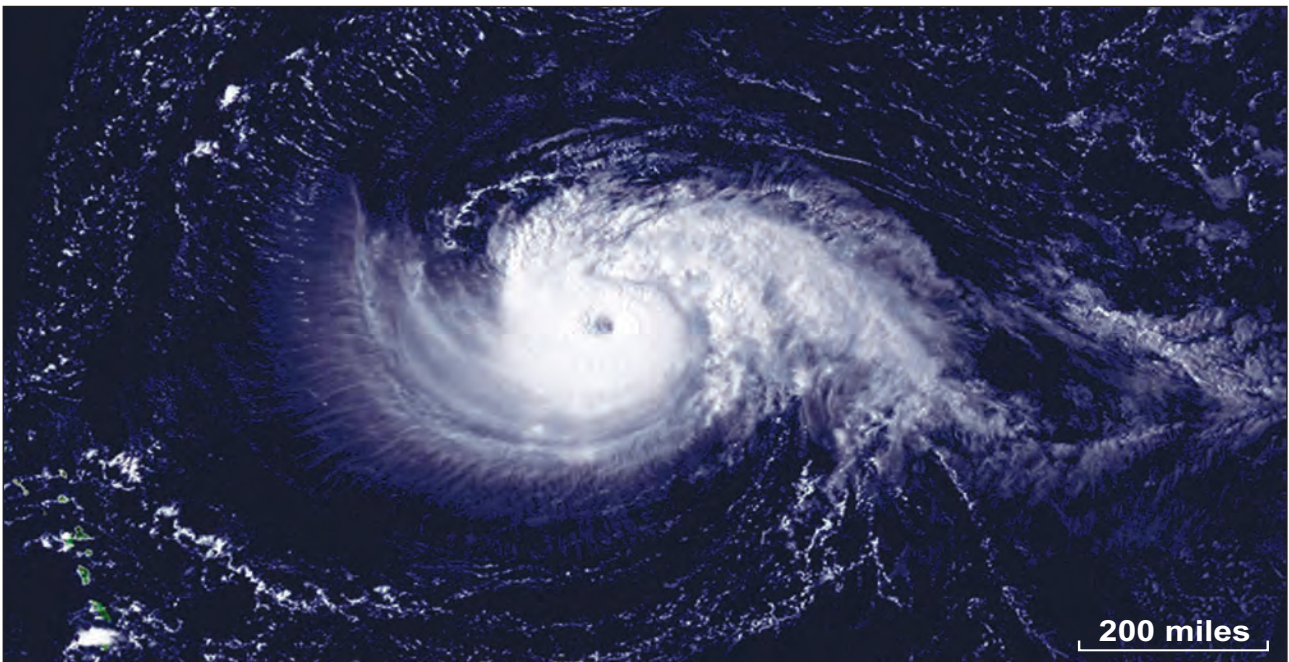
SECTION A

Answer all parts of this question.

- 1. This question is about the influence of the physical environment on the distribution and activities of people.**

Study Source A and answer the question that follows.

Source A – Satellite image of Hurricane Isabel.



- (a) Use Source A **only** to describe **two** features of a hurricane. [2]

.....

.....

.....

.....

(b) Explain why hurricanes only develop within the Tropics.

[4]

.....

.....

.....

.....

.....

.....

.....

.....

.....

.....

.....

.....

.....

.....

.....

.....

.....

.....

.....

.....

.....

.....

4321
020003

Study Source B and answer the question that follows.

Source B – Preparing for a hurricane



(c) Describe how people can prepare for hurricanes in order to reduce their effects. [4]

.....

.....

.....

.....

.....

.....

.....

.....

.....

.....

.....

.....

.....

.....

.....

.....

.....

.....

.....

.....

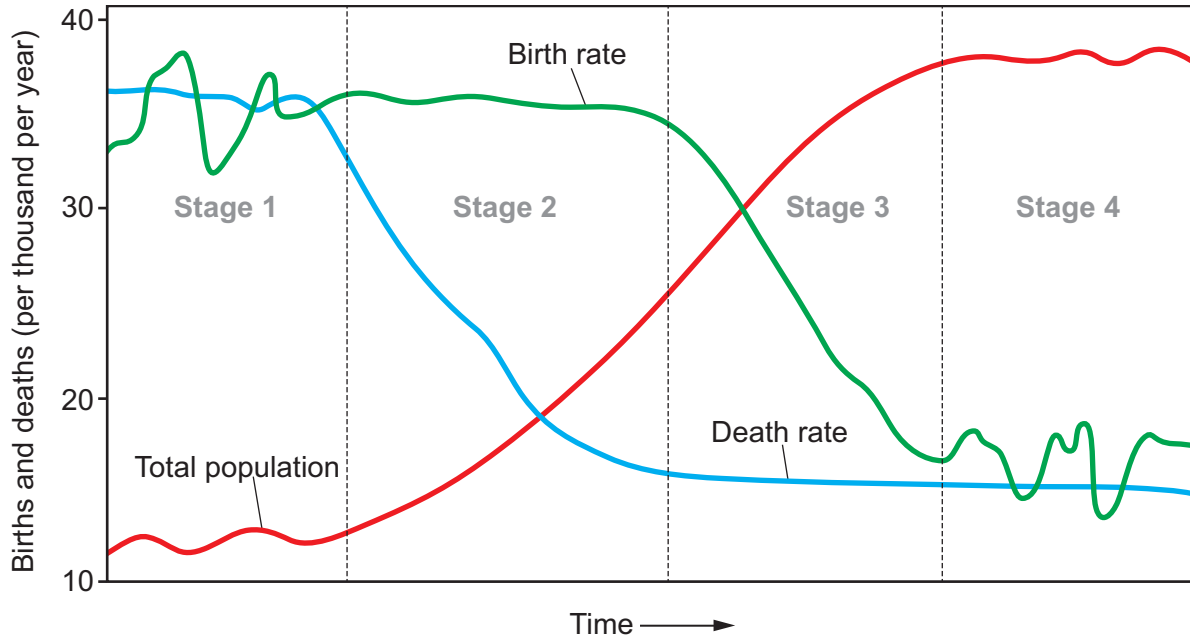
.....

.....

.....

Study Source C and answer the question that follows.

Source C – The Demographic Transition Model



(e) Use Source C **and your own knowledge** to explain change in population over the different stages of the Demographic Transition Model. [6]

.....

.....

.....

.....

.....

.....

.....

.....

.....

.....

.....

.....

.....

.....

.....

.....

.....

.....

.....

.....

.....

.....

.....

.....

.....

.....

.....

.....

.....

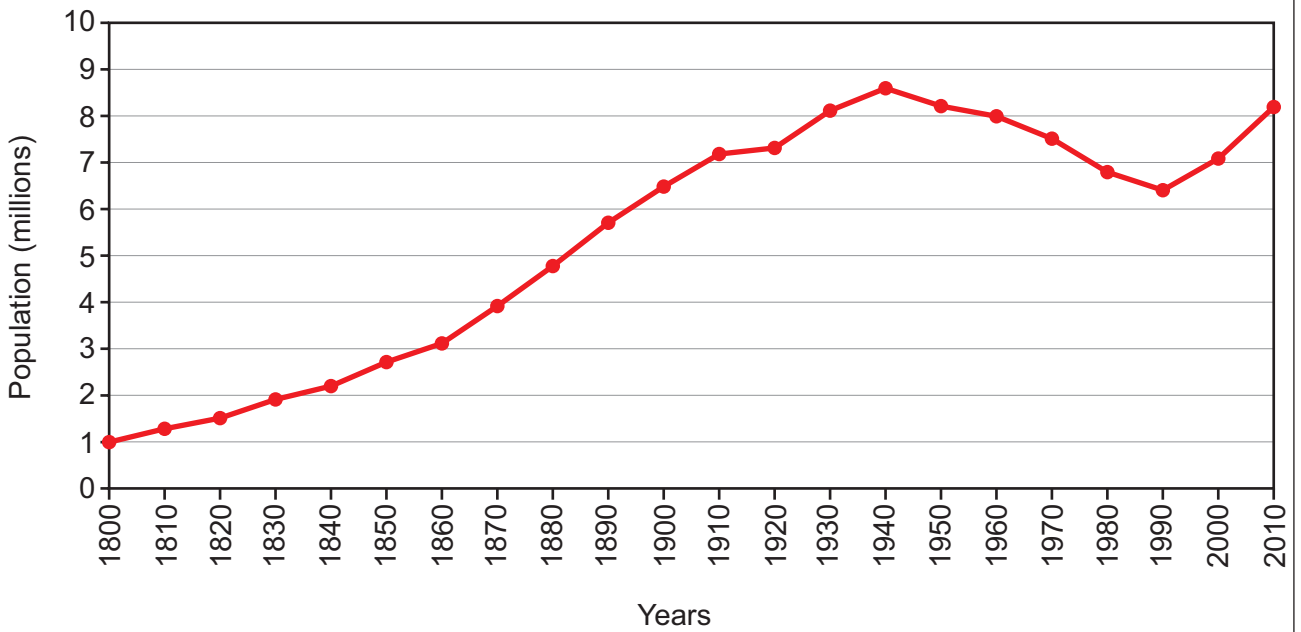
SECTION B

Answer either Question 2 or Question 3.

2. This question is about life in urban areas.

Study Source A and answer the question that follows.

Source A – The Changing Population of London



(a) Use Source A **only** to describe the changing population of London.

[2]

.....

.....

.....

.....

.....

.....

.....

Study Source B and answer the question that follows.

Source B – A Central Business District



(b) Explain why land prices are high in Central Business Districts.

[4]

.....

.....

.....

.....

.....

.....

.....

.....

.....

.....

.....

.....

.....

.....

.....

.....

.....

.....

.....

.....

.....

.....

.....

Examiner
only

(c) The increasing use of cars in UK cities has created many problems. Describe how these problems affect different groups of people. [6]

.....

.....

.....

.....

.....

.....

.....

.....

.....

.....

.....

.....

.....

.....

.....

.....

.....

.....

.....

.....

.....

.....

.....

(d) 'Living in a UK inner city gives you a better quality of life than living in the suburbs.'
To what extent do you agree with this statement?

[8]

In your answer you may consider:

- *the benefits and problems of living in the inner city;*
- *the benefits and problems of suburban living.*

Conclude your answer by saying to what extent you agree with the statement, and why.

.....

.....

.....

.....

.....

.....

.....

.....

.....

.....

.....

.....

.....

.....

.....

.....

.....

.....

.....

.....

.....

.....

.....

.....

.....

.....

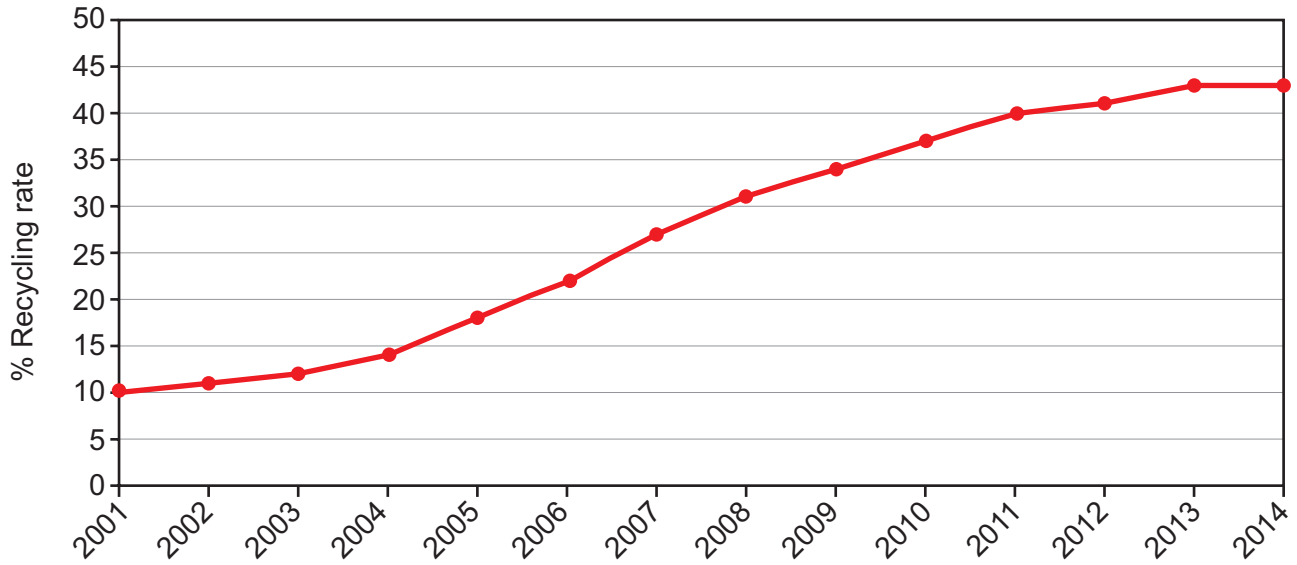
END OF QUESTION 2

If you have answered Question 2 you **must not** answer Question 3.

3. This question is about issues connected with the world’s climate.

Study Source A and answer the question that follows.

Source A – The percentage of Household Waste that is recycled in England (2001-2014)



(a) Use Source A **only** to describe how the percentage of household waste recycling has changed. [2]

.....

.....

.....

.....

Study Source B and answer the question that follows.

Source B – A Volcanic Eruption



(b) Describe how natural processes lead to climate change.

[4]

.....

.....

.....

.....

.....

.....

.....

.....

.....

.....

.....

.....

.....

.....

.....

.....

.....

.....

.....

.....

(c) Describe how greenhouse gases in the atmosphere contribute to global warming. [6]

Examiner
only

.....

.....

.....

.....

.....

.....

.....

.....

.....

.....

.....

.....

.....

.....

.....

.....

.....

.....

.....

.....

.....

.....

.....

.....

.....

