

Candidate Name	Centre Number	Candidate Number
		0



**GCSE**

176/12

**HUMANITIES**

**CONTEMPORARY ISSUES UNIT**

**RIGHTS AND RESPONSIBILITIES**

**PAPER 1**

A.M. TUESDAY, 13 May 2008

$\frac{3}{4}$  hour (of  $1\frac{3}{4}$  hour examination)

<b>Examiner's use only</b>	
<b>TOTAL</b>	/30

**INSTRUCTIONS TO CANDIDATES**

Write your name, centre number and candidate number in the spaces at the top of this page.

Answer **all** questions on this paper.

Write your answers in the spaces provided in this booklet. Use supplementary sheets when there is insufficient room in this booklet. Write your name at the top of each supplementary sheet, indicating clearly the number of the question you answer. Put the supplementary sheets inside this booklet.

**INFORMATION FOR CANDIDATES**

The number of marks is given in brackets at the end of each question or part-question.

You will be awarded marks for the quality of your written communication.

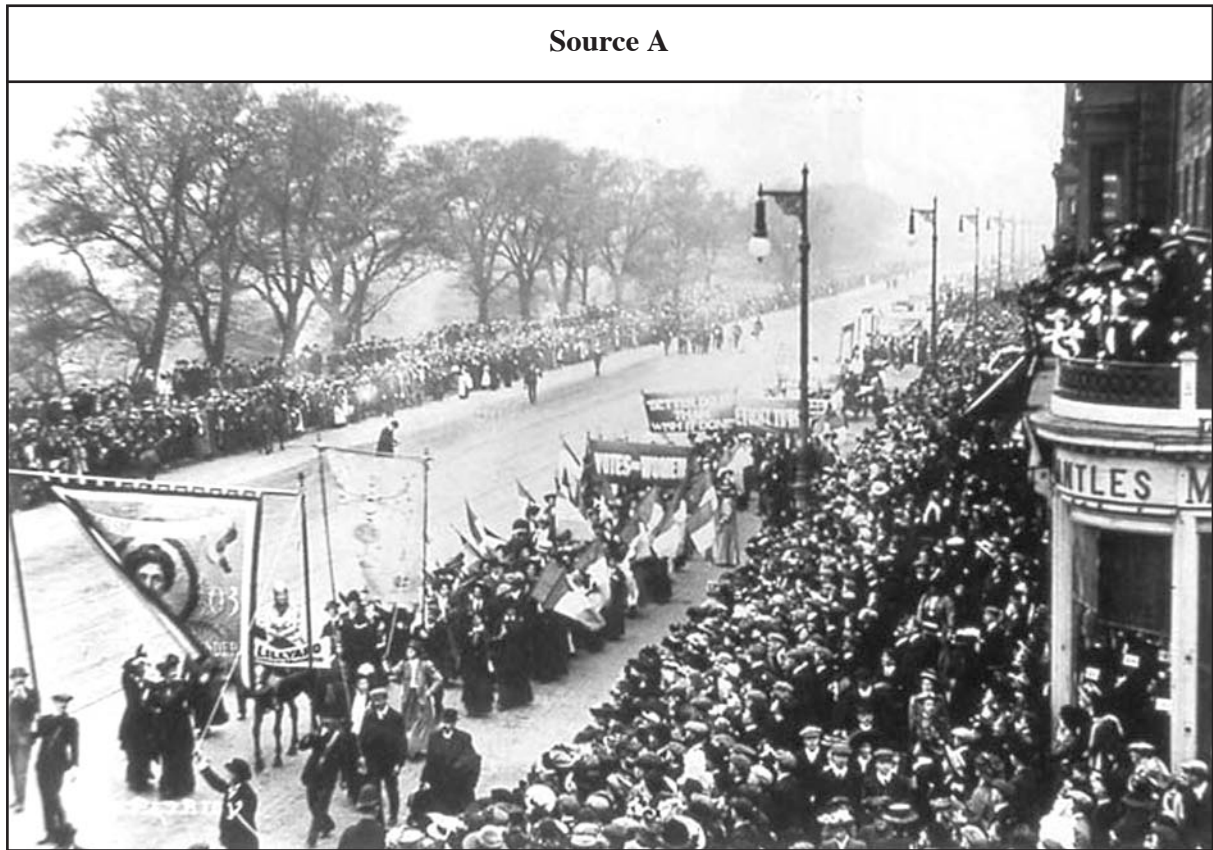
Your answers must be relevant and must make full use of the information given to be awarded full marks for a question.

**You are reminded that you should always support your answers using your knowledge and understanding of the topic chosen.**

CONTEMPORARY ISSUES UNIT  
RIGHTS AND RESPONSIBILITIES

Answer **all** the questions.

(a) Study Source A below which shows a suffragette march through Edinburgh in 1909.



What does Source A tell you about the Suffragette movement?

[2]

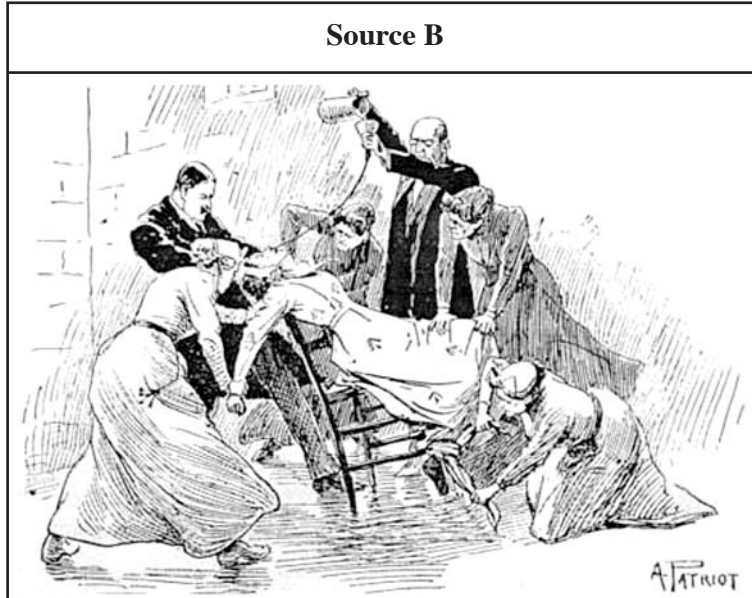
.....

.....

.....

.....

(b) Study Source B below which shows a cartoon which appeared in a newspaper called *The Suffragette* in 1909.



Use Source B and your own knowledge to describe the attitude of the government to the campaign for votes for women. [4]

.....

.....

.....

.....

.....

.....

.....

.....





.....

.....

.....

.....

.....

.....

.....

.....

.....

.....



.....

.....

.....

.....

.....

.....

.....

.....

.....

.....

**END OF QUESTION**