

Question 1 is about buying clothes for work.

Study the photographs shown on the insert.

- 1 A young woman needs a suit for work. She wants to wear it in the spring and summer months. She is thinking about buying one of the suits shown on the enclosed insert. Details of the two suits are given below.

| | Suit A | Suit B |
|--------------|--|----------------------|
| Outer fabric | 63% polyester 31% viscose 6% Lycra | 96% wool 4% Lycra |
| Lining | 100% polyester | 100% acetate |
| Cost of suit | £100 | £130 |
| Care | Wash at 40°C | Dry clean only |

- (a) Study the style features of both suits.
Discuss how the different features might influence her decision when choosing a suit.

.....

.....

.....

.....

.....

.....

(6 marks)

- (b) Explain how the **two** outer fabrics might perform over a period of time.

.....

.....

.....

.....

.....

.....

.....

.....

.....

.....

(8 marks)

- (c) Suggest a finish which could be applied to the fabric of **Suit A**.
Explain why you consider it desirable.

.....
.....
.....

(3 marks)

- (d) (i) Both suit jackets are lined. Evaluate the use of linings in suits.

.....
.....
.....
.....
.....
.....

(6 marks)

- (ii) Different lining fabrics have been used in the suits.
Compare the properties of the polyester lining with those of the acetate lining.

.....
.....
.....
.....
.....

(5 marks)

- (e) **Suit A** can be washed but **Suit B** must be dry cleaned. Explain why.

.....
.....
.....
.....

(4 marks)

QUESTION 1 CONTINUES ON THE NEXT PAGE

Turn over ▶

(f) Which suit do you consider is the best value for money? Give reasons for your answer.

.....

.....

.....

.....

.....

.....

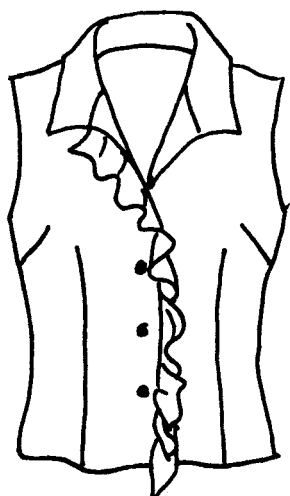
.....

.....

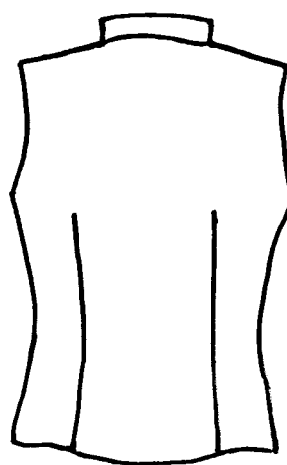
(6 marks)

Question 2 is about making a top.

2 The top shown below is being made at home. It is to be worn with one of the suits shown on the insert.



Front view



Back view

Study the chart below. You decide to make the top in **Style B**, using a lightweight cotton fabric.

| Sizes | | 8 | 10 | 12 | 14 | 16 | 18 | |
|--|--------|------|------|------|------|------|------|---|
| Style A | 115 cm | 1.20 | 1.30 | 1.30 | 1.30 | 1.30 | 1.50 | m |
| | 150 cm | 1.00 | 1.00 | 1.00 | 1.00 | 1.00 | 1.00 | m |
| Style B | 115 cm | 1.20 | 1.30 | 1.30 | 1.30 | 1.30 | 1.30 | m |
| | 150 cm | 0.90 | 0.90 | 0.90 | 0.90 | 0.90 | 0.90 | m |
| Style C | 115 cm | 1.20 | 1.30 | 1.30 | 1.30 | 1.40 | 1.40 | m |
| | 150 cm | 1.00 | 1.00 | 1.00 | 1.00 | 1.00 | 1.00 | m |
| A.B.C. Interfacing 0.80 m lightweight fusible or non fusible | | | | | | | | |
| Suggested Fabrics Use fabrics with no right or wrong sides. Allow extra fabric for matching plaids or stripes. | | | | | | | | |

- (a) (i) The pattern envelope says to use fabrics without a right or wrong side. Why is this advice given?

.....
.....

(2 marks)

- (ii) Why is extra fabric needed if a striped fabric is chosen?

.....

(1 mark)

- (b) How much 115 cm wide fabric will be needed for the Style B size 12 top?

.....

(1 mark)

- (c) How much 150 cm wide fabric will be needed for the Style B size 8 top?

.....

(1 mark)

- (d) (i) How much interfacing will be needed?

.....

(1 mark)

- (ii) What is meant by a *fusible* interfacing?

.....

(1 mark)

QUESTION 2 CONTINUES ON THE NEXT PAGE

Turn over ►

(iii) Give **two** advantages of using a fusible interfacing for the top.

1

2

(2 marks)

(iv) Give **one** disadvantage of using a fusible interfacing for the top.

.....

(1 mark)

(e) Discuss the points to be considered when selecting buttons for the top.

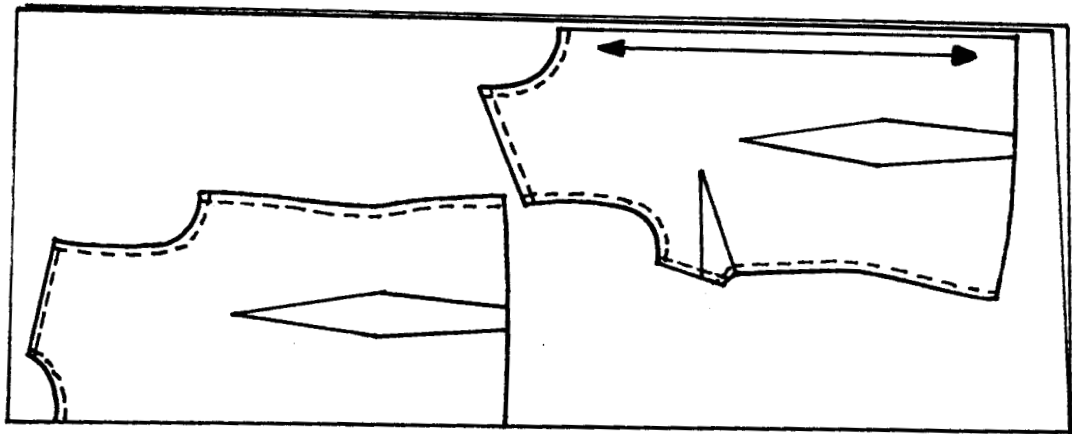
.....

.....

.....

(3 marks)

(f) Study the pattern layout for the front and back pieces of the top.



(i) Label **each** of the following on the diagram.

- | | | | |
|---------------------|-------------|-----------|-------|
| Selvedge | Fabric fold | Seam line | Front |
| Straight grain line | Dart | Raw edge | Back |

(8 marks)

(ii) Describe the care needed when placing the pattern pieces on the fabric.

.....
.....
.....
.....

(4 marks)

(g) (i) The top has a number of darts. Explain why they are needed.

.....
.....
.....

(3 marks)

(ii) Describe the care needed when stitching the darts.

.....
.....
.....
.....
.....
.....

(6 marks)

(h) Name and evaluate the use of **two** different ways of finishing the armholes.

1

.....
.....

2

.....
.....

(6 marks)

QUESTION 2 CONTINUES ON THE NEXT PAGE

Turn over ▶

- (i) Use notes and diagrams to show **one** method of making the side seams.
Remember that a lightweight cotton fabric is being used.

(7 marks)

—
47

(c) Explain why it is important to make sure that the sewing machine needle is sharp and the correct size.

.....

.....

.....

.....

.....

(5 marks)

21

(b) Discuss the ways in which computer technology could be used in the purchase of clothing.

.....

.....

.....

.....

.....

.....

.....

.....

.....

.....

.....

.....

.....

.....

.....

.....

.....

.....

.....

.....

.....

.....

(6 marks)

(c) Manufacturers and retailers use a range of Quality Assurance labels on textile products. Discuss the use and effectiveness of such labelling.

.....

.....

.....

.....

.....

.....

.....

.....

.....

.....

.....

.....

.....

.....

.....

.....

.....

.....

.....

.....

.....

.....

(6 marks)

END OF QUESTIONS

Version 1.1

General Certificate of Secondary Education
June 2003

HOME ECONOMICS (TEXTILES)
Foundation and Higher Tiers
Written Paper

3563/F/H



Wednesday 18 June 2003 1.30 pm to 3.00 pm (Foundation Tier)
1.30 pm to 3.30 pm (Higher Tier)

F/H

Turn over for illustrations for Question 1



B



A