

Question 1 is about buying clothes for work.
Study the photographs shown on the insert.

- 1 A young woman needs a suit for work. She wants to wear it in the spring and summer months. She is thinking about buying one of the suits shown on the enclosed insert. Details of the two suits are given below.

Suit A	
Outer fabric	63% polyester 31% viscose 6% Lycra
Cost of suit	£100
Care	Wash at 40°C

Suit B	
Outer fabric	96% wool 4% Lycra
Cost of suit	£130
Care	Dry clean only

- (a) Look at the style features of both suits.
Explain how **two** features are different on the two suits.

Feature 1

.....

.....

(3 marks)

Feature 2

.....

.....

(3 marks)

- (b) (i) Describe the properties of the outer fabric used for **Suit A**.

.....

.....

.....

.....

(4 marks)

- (ii) Describe the properties of the outer fabric used for **Suit B**.

.....

.....

.....

.....

(4 marks)

- (c) (i) Both suit jackets are lined.
Explain **three** reasons why suits are lined.

1

.....

2

.....

3

.....

(6 marks)

- (ii) Give **one** disadvantage of lining a suit.

.....

(1 mark)

- (iii) A 100% polyester fabric has been used to line the suit jackets.
Give **three** reasons why this fabric is suitable for a lining.

1

2

3

(3 marks)

- (d) Which suit do you consider is the best value for money? Give reasons for your answer.

.....

.....

.....

.....

.....

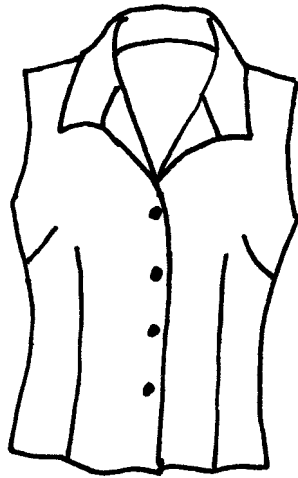
.....

.....

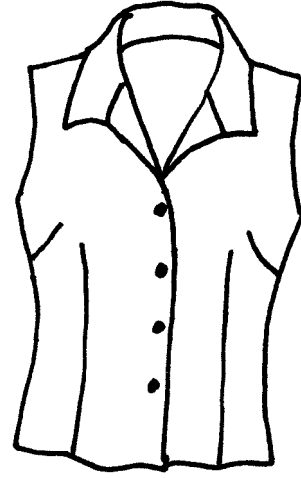
(6 marks)

Question 2 is about making a top.

- 2 The top shown below is being made at home. It is to be worn with one of the suits shown on the insert.



Front view



Back view

Study the chart below. You decide to make the top in Style B, which is a lightweight cotton fabric.

Sizes		8	10	12	14	16	18	
Style A	115 cm	1.20	1.30	1.30	1.30	1.30	1.50	m
	150 cm	1.00	1.00	1.00	1.00	1.00	1.00	m
Style B	115 cm	1.20	1.30	1.30	1.30	1.30	1.30	m
	150 cm	0.90	0.90	0.90	0.90	0.90	0.90	m
Style C	115 cm	1.20	1.30	1.30	1.30	1.40	1.40	m
	150 cm	1.00	1.00	1.00	1.00	1.00	1.00	m
A.B.C. Interfacing 0.80 m lightweight fusible or non fusible								

- (a) How much 115 cm wide fabric will be needed for the Style B size 12 top?

.....
(1 mark)

- (b) How much 150 cm wide fabric will be needed for the Style B size 8 top?

.....
(1 mark)

- (c) (i) How much interfacing will be needed?

.....
(1 mark)

- (ii) What is meant by a *fusible* interfacing?

.....
(1 mark)

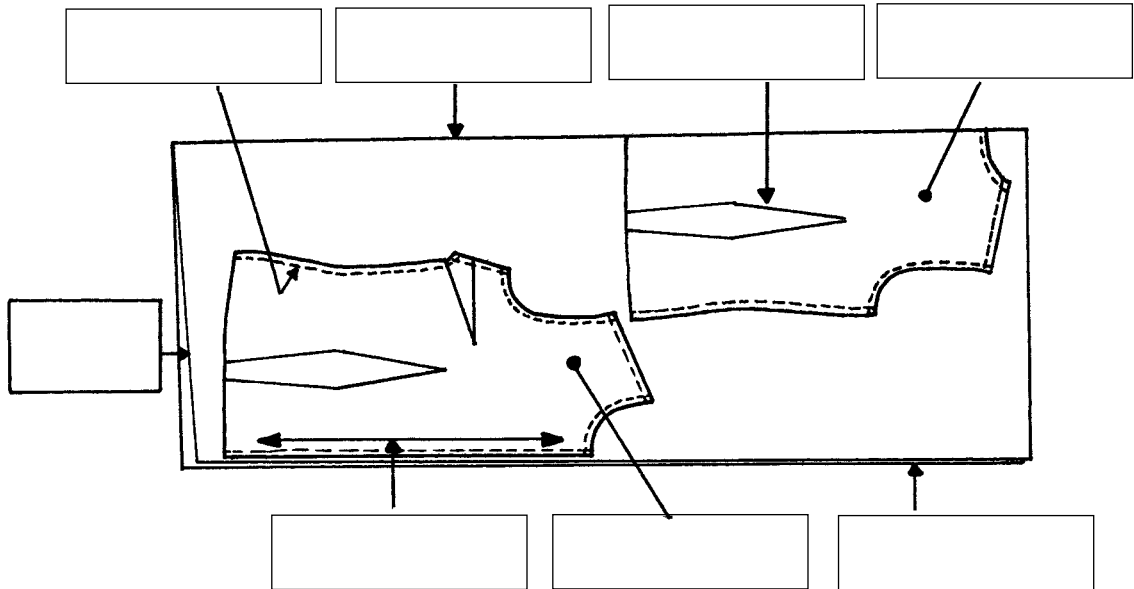
(iii) Give **two** advantages of using a fusible interfacing for the top.

- 1
- 2
- (2 marks)*

(d) Give **two** points to be considered when choosing buttons for the top.

- 1
- 2
- (2 marks)*

(e) Study the pattern layout for the front and back pieces of the top.



(i) Write **each** of the words given below in the correct box on the diagram.

- | | | | |
|---------------------|-------------|-----------|-------|
| Selvedge | Fabric fold | Seam line | Front |
| Straight grain line | Dart | Raw edge | Back |

(8 marks)

QUESTION 2 CONTINUES ON THE NEXT PAGE

Turn over ▶

(ii) Describe the care needed when placing the pattern pieces on the fabric.

.....
.....
.....

(3 marks)

(f) (i) The top has a number of darts. Explain why they are needed.

.....
.....
.....

(3 marks)

(ii) Care will be needed when stitching the darts.
Give **two** points to check for.

1

2

(2 marks)

(g) Use notes and diagrams to show **one** method of making the side seams.
Remember that a lightweight cotton fabric is being used.

(7 marks)

Question 3 is about the equipment used to make the top.

- 3 (a) Discuss the safety rules to be followed when using sewing machines, overlockers and irons.

.....

.....

.....

.....

.....

.....

.....

.....

.....

.....

.....

.....

.....

.....

.....

.....

.....

.....

.....

.....

.....

.....

(10 marks)

- (b) (i) The top has buttonholes.
Explain how you can make sure the buttonholes are evenly sized and spaced.

.....

.....

.....

.....

.....

.....

.....

.....

.....

.....

(4 marks)

- (ii) The hem is top stitched.
You want to make sure that the stitching is an even distance from the edge. How can you do this?

.....

.....

.....

.....

.....

(3 marks)

QUESTION 3 CONTINUES ON THE NEXT PAGE

Turn over ▶

(c) Explain **two** problems that a blunt sewing machine needle could cause.

1

2

(2 marks)

19

Question 4 is about the consumer.

4 (a) Explain **three** different ways in which the two suits shown on the insert could be advertised.

1

.....

.....

2

.....

.....

3

.....

.....

(9 marks)

(b) Explain **three** ways in which computer technology could be used in the purchase of clothing.

1

.....

2

.....

3

.....

(6 marks)

15

END OF QUESTIONS

Version 1.1

General Certificate of Secondary Education
June 2003

HOME ECONOMICS (TEXTILES)
Foundation and Higher Tiers
Written Paper

3563/F/H



Wednesday 18 June 2003 1.30 pm to 3.00 pm (Foundation Tier)
1.30 pm to 3.30 pm (Higher Tier)

F/H

Turn over for illustrations for Question 1



B



A