



General Certificate of Secondary Education
2022

Centre Number

--	--	--	--	--

Candidate Number

--	--	--	--	--

Home Economics: Food and Nutrition

Written Paper



[G9521]

G9521

MONDAY 20 JUNE, AFTERNOON

TIME

2 hours.

INSTRUCTIONS TO CANDIDATES

Write your Centre Number and Candidate Number in the spaces provided at the top of this page.

You must answer the questions in the spaces provided.

Do not write outside the boxed area on each page or on blank pages.

Complete in black ink only. **Do not write with a gel pen.**

Answer **all twelve** questions.

INFORMATION FOR CANDIDATES

The total mark for this paper is 120.

Figures in brackets printed down the right-hand side of pages indicate the marks awarded to each question or part question.

Quality of written communication will be assessed in Questions **10, 11, and 12.**



This is a multiple choice section. You are advised to spend no more than 5 minutes on this section.

Read the following statements and tick the box beside each correct answer. Tick [✓] only **one** box for each statement.

1 (a) Which **one** of the following nutrients is a macronutrient?

A carbohydrate

B vitamin A

C calcium

D sodium

[1]

(b) Which **one** of the following foods is an example of a food that has undergone primary processing?

A banana

B egg

C flour

D tomato

[1]

(c) Which **one** of the following foods is a good source of protein?

A cabbage

B milk

C oranges

D courgette

[1]



(d) Which **one** of the following temperature ranges represents the “danger zone” at which bacteria multiply rapidly?

A 0 – 4°C

B 100 – 120°C

C 75 – 94°C

D 5 – 63°C

[1]

(e) Which **one** of the following health issues is caused by a deficiency of calcium?

A osteoporosis

B anaemia

C cardiovascular disease

D obesity

[1]

(f) Which **one** of the following foods is not covered under the Northern Ireland Beef and Lamb Farm Quality Assurance Scheme (NIBL FQAS)?

A lamb chops

B rump steak

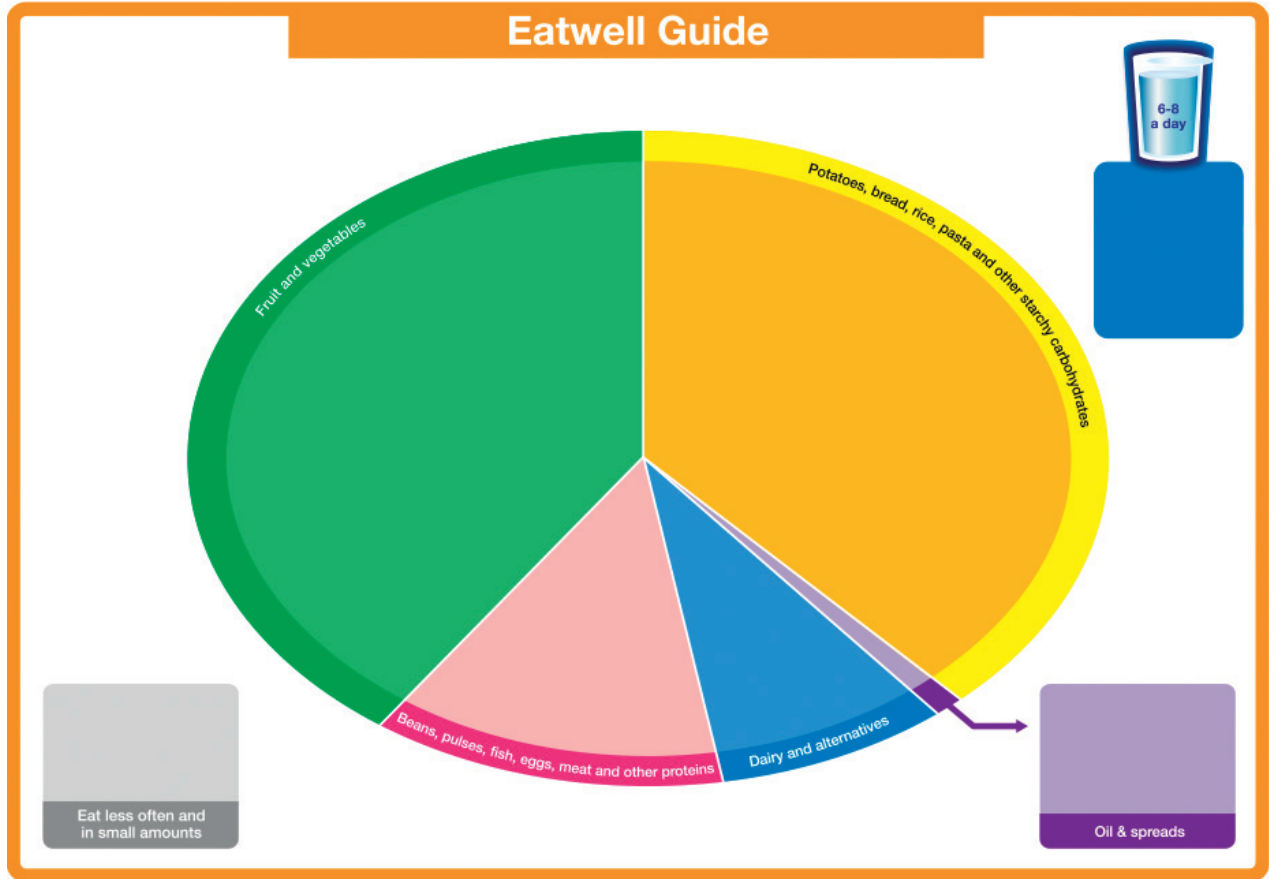
C cod

D minced beef

[1]

[Turn over





This resource has been developed to support the British Nutrition Foundation's Healthy Eating Week 2016. For further resources and information, go to: www.foodatactofife.org.uk and www.nutrition.org.uk

© Crown copyright 2016

© Crown copyright 2016 and © Getty Images

(a) Write the following foods onto the correct section of the Eatwell Guide above.

- broccoli
- lentils
- couscous
- single cream

[4]



(b) One of the “8 tips for eating well” is to eat less salt.

(i) Write down **three** ways to reduce the amount of salt in the diet.

1. _____ [1]

2. _____ [1]

3. _____ [1]

(ii) Discuss why it is important to reduce the amount of salt in the diet.

_____ [3]

(c) Another one of the “8 tips for eating well” is to eat lots of fruit and vegetables. Explain why this is important to health.

_____ [3]

[Turn over



3 (a) The food supply chain has several stages. Place the following sectors of the food supply chain in the correct order.

distribution sector

agricultural sector

manufacturing sector



[3]

(b) Explain **two** health benefits of including fish in the diet.

1. _____

_____ [2]

2. _____

_____ [2]



(c) Explain why sustainable fishing is important.

[3]

[Turn over



4 (a) Discuss the possible consequences of a deficiency of folate.

[3]

(b) Explain why food manufacturers choose to fortify foods during food production.

[4]





BLANK PAGE

DO NOT WRITE ON THIS PAGE

(Questions continue overleaf)



5 (a) Explain **three** factors that influence individual energy requirements.

1. _____

_____ [2]

2. _____

_____ [2]

3. _____

_____ [2]





7 Evaluate the use of a debit card when paying for a meal in a restaurant.

[4]



8 (a) Explain how the following factors can affect an individual's ability to be an effective consumer when shopping for food.

Access to transport

[3]

Literacy skills

[3]



(b) Outline the protection offered to consumers by the following legislation.

The Food Safety (Northern Ireland) Order 1991

[3]

The Food Hygiene Regulations (NI) 2006

[3]

[Turn over



THIS IS THE END OF THE QUESTION PAPER

DO NOT WRITE ON THIS PAGE

For Examiner's use only	
Question Number	Marks
1	
2	
3	
4	
5	
6	
7	
8	
9	
10	
11	
12	

Total Marks	
--------------------	--

Examiner Number

Permission to reproduce all copyright material has been applied for.
In some cases, efforts to contact copyright holders may have been unsuccessful and CCEA will be happy to rectify any omissions of acknowledgement in future if notified.

12956/3



24G952124