

Candidate Name	Centre Number	Candidate Number
		0



GCSE

165/04

HISTORY

SPECIFICATION A: IN-DEPTH AND OUTLINE STUDIES OF ASPECTS OF WELSH/ENGLISH AND WORLD HISTORY

SPECIFICATION B: IN-DEPTH, THEMATIC AND DEVELOPMENT STUDIES OF ASPECTS OF WELSH/ENGLISH AND WORLD HISTORY

PAPER 1

STUDY IN-DEPTH

04 – DEPRESSION, WAR AND RECOVERY, 1930-1951

P.M. TUESDAY, 3 June 2008

1 hour (of two hour examination)

Questions answered	Office use
Q.1 (Compulsory)	/ 20
Q.	/ 25
TOTAL	/ 45

INSTRUCTIONS TO CANDIDATES

Write your name, centre number and candidate number in the spaces at the top of this page.

Answer Question 1(Section A) **and** *either* Question 2 *or* Question 3 (Section B).

Write your answers in the spaces provided in this booklet. Use supplementary sheets when there is insufficient room in this booklet. Write your name at the top of each supplementary sheet, indicating clearly the number of the question you answer. Put the supplementary sheets inside this booklet.

INFORMATION FOR CANDIDATES

The number of marks is given in brackets at the end of each question or part-question.

You will be awarded marks for the quality of your written communication.

Your answers must be relevant and must make full use of information given to be awarded full marks for a question.

You are reminded that you should always support your answers using your knowledge and understanding of the topic chosen.

Answer Question 1 in Section A and **either** Question 2 **or** Question 3 in Section B.

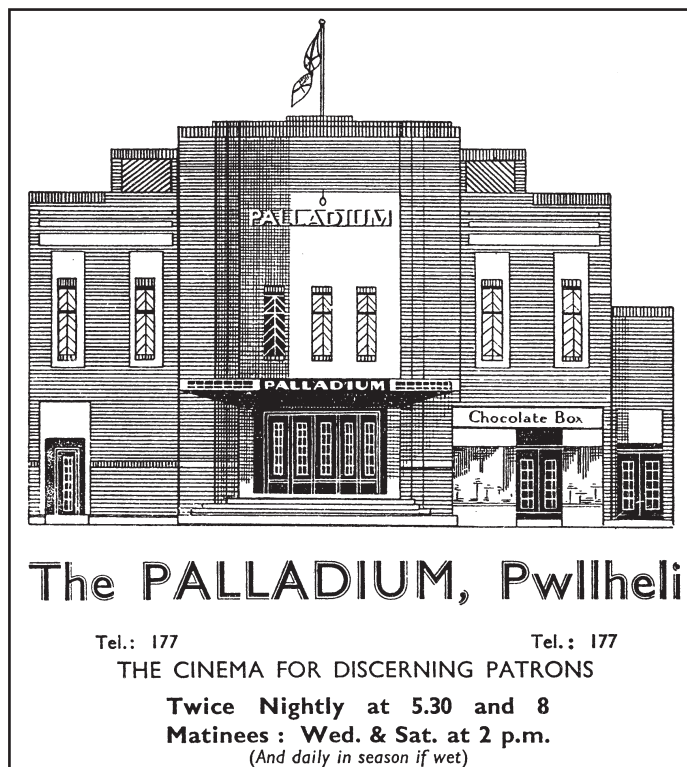
SECTION A
(COMPULSORY)

1. This question is about life in the Depression.

Study the sources below and then answer the questions which follow each source.

[20]

Source A



[A poster advertising a cinema in Pwllheli, North Wales, about 1936]

- (a) Use Source A and your own knowledge to describe the types of popular entertainment available to people in the 1930s. [3]

.....

.....

.....

.....

.....

.....

.....

.....

.....

.....

Source B

In the 1930s, thousands of unemployed workers and their families moved from Wales to the more prosperous areas of England. Some took advantage of an official government scheme to find work in England for the unemployed from Wales.

[From P. Barnes, R.P. Evans and P. Jones-Evans, *GCSE History for WJEC Specification A* (2003)]

- (b) Use the information in Source B and your own knowledge to explain why people migrated from Wales to England in the 1930s. [4]

.....

.....

.....

.....

.....

.....

.....

.....

.....

.....

.....

.....

.....

.....

.....

.....

Source C

Once I was back living in Wales I could see much more clearly the humiliating and terrible effect of unemployment on people, particularly in the coal mining valleys where all hope seemed to be gone. Men were standing on street corners, not knowing what to do with themselves. People were really hungry. You had to take part in any activity, like the hunger march, which would make people themselves feel that they were fighting back.

[Mrs Dora Cox speaking in a BBC Radio interview in 1985.
She was remembering her part in a hunger march from Wales in 1934.]

- (c) How useful is Source C as evidence to an historian studying life during the Depression? Explain your answer using the source and your own knowledge. [5]

.....

.....

.....

.....

.....

.....

.....

.....

.....

.....

.....

.....

.....

.....

.....

.....

.....

.....

.....

.....

.....

.....

.....

Source D

The 1930s were a period of recovery marked throughout Wales and England by a rise in wages and living standards.

[R.K. Webb, an historian, writing in a general history book, *Modern England* (1980)]

- (d) In Source D the author is suggesting that the 1930s were not such a bad time in which to live.
Is this a valid interpretation?
In your answer you should use your own knowledge of the topic, refer to the other relevant sources in this question, and consider how the author came to this interpretation. [8]

.....

.....

.....

.....

.....

.....

.....

.....

.....

.....

.....

.....

.....

.....

.....

.....

.....

.....

.....

.....

.....

.....

.....

.....

.....

.....

.....

.....

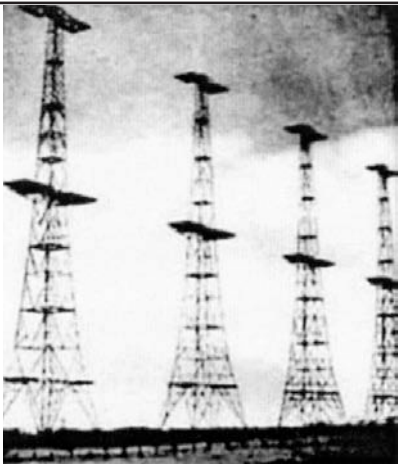
SECTION B

Answer **either** Question 2 or Question 3.

2. This question is about Britain and the threat of Germany.

Study the information below and then answer the questions which follow.

[25]

INFORMATION
Britain had to prepare for war in the late 1930s. The photograph shows some of Britain's important preparations.


(a) (i) What was RADAR?

[2]

.....

.....

.....

.....

.....

.....

(ii) Explain why Britain accepted the *Anschluss* (Union) between Germany and Austria in 1938. [4]

.....
.....
.....
.....
.....
.....
.....
.....
.....
.....
.....
.....
.....
.....
.....

(iii) How important was the role of Chamberlain at the Munich Conference? [5]

.....
.....
.....
.....
.....
.....
.....
.....
.....
.....
.....
.....
.....
.....
.....
.....
.....
.....
.....
.....
.....
.....

(b) (i) Describe how Britain prepared for war in the late 1930s. [3]

.....

.....

.....

.....

.....

.....

.....

.....

.....

.....

.....

.....

.....

.....

.....

.....

.....

.....

.....

.....

.....

.....

.....

(ii) Explain why the German invasion of Poland led to Britain going to war. [4]

.....

.....

.....

.....

.....

.....

.....

.....

.....

.....

.....

.....

.....

.....

.....

.....

.....

.....

.....

.....

.....

.....

.....

- (c) How far was the failure of appeasement the main reason for Britain going to war in 1939? Explain your answer fully. [7]

.....

.....

.....

.....

.....

.....

.....

.....

.....

.....

.....

.....

.....

.....

.....

.....

.....

.....

.....

.....

.....

.....

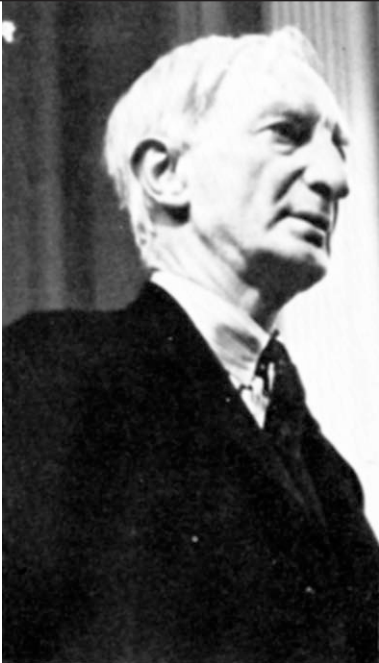
.....

.....

3. This question is about post-war Wales and England.

Study the information below and then answer the questions which follow.

[25]

INFORMATION	
Labour won a landslide victory in 1945. They began to implement the ideas of William Beveridge, shown in this picture.	
	

(a) (i) Who was William Beveridge?

[2]

.....

.....

.....

.....

.....

.....

(ii) Explain why Labour won a landslide victory in the general election of 1945. [4]

.....

.....

.....

.....

.....

.....

.....

.....

.....

.....

.....

.....

.....

.....

.....

.....

.....

.....

.....

(iii) How important was Aneurin Bevan in helping to create a Welfare State? [5]

.....

.....

.....

.....

.....

.....

.....

.....

.....

.....

.....

.....

.....

.....

.....

.....

.....

.....

.....

.....

(b) (i) Describe the new educational opportunities available after the war. [3]

.....

.....

.....

.....

.....

.....

.....

.....

.....

.....

.....

(ii) Explain why the Labour government introduced a policy of nationalisation. [4]

.....

.....

.....

.....

.....

.....

.....

.....

.....

.....

.....

.....

.....

.....

.....

.....

.....

.....

.....

.....

.....

