

Candidate Name	Centre Number	Candidate Number

WELSH JOINT EDUCATION COMMITTEE
General Certificate of Secondary Education



CYD-BWYLLGOR ADDYSG CYMRU
Tystysgrif Gyffredinol Addysg Uwchradd

165/15

HISTORY

SPECIFICATION A: IN-DEPTH AND OUTLINE STUDIES OF ASPECTS OF WELSH/ENGLISH AND WORLD HISTORY

PAPER 2

OUTLINE STUDY

15 - PALESTINE AND ISRAEL IN THE MIDDLE EAST, 1919-1990

A.M. THURSDAY, 14 June 2007

(1 hour 20 minutes)

Questions answered	Office use
Question	30
Question	30
TOTAL	60

INSTRUCTIONS TO CANDIDATES

Write your name, centre number and candidate number in the spaces at the top of this page.

Answer **two** questions.

Write your answers in the spaces provided in this booklet. Use supplementary sheets when there is insufficient room in this booklet. Write your name at the top of each supplementary sheet, indicating clearly the number of the question you answer. Put the supplementary sheets inside this booklet.

INFORMATION FOR CANDIDATES

The number of marks is given in brackets at the end of each question or part-question.

You will be awarded marks for the quality of your written communication.

Your answers must be relevant and must make full use of information given to be awarded full marks for a question.

You are reminded that you should always support your answers using your knowledge and understanding of the topic chosen.

No certificate will be awarded to a candidate detected in any unfair practice during the examination.

Answer any two questions.

1. This question is about the development of Palestine and Israel, 1919-1990.

Study the information below and then answer the questions which follow.

[30]

INFORMATION

The development of Palestine and Israel between 1919 and 1990 took many different turns. The picture shows Jewish immigrants to Palestine building a home to live in.



(a) What was the Law of Return?

[2]

.....

.....

.....

.....

.....

.....

(b) Describe the declaration of the state of Israel.

[4]

.....

.....

.....

.....

.....

.....

.....

.....

.....

.....

.....

.....

.....

.....

.....

.....

.....

.....

.....

.....

.....

.....

(c) Explain the reasons for the Camp David peace agreement.

[6]

.....

.....

.....

.....

.....

.....

.....

.....

.....

.....

.....

.....

.....

.....

.....

.....

.....

.....

.....

.....

.....

.....

.....

.....

.....

(e) What major events contributed to the development of Palestine and Israel between 1919 and 1990?

In your answer you may wish to consider problems created by Jewish immigration before the Second World War, the declaration of the State of Israel, the economic and military development of Israel, key political figures, the situation in 1990 and any other relevant factors. [10]

Dotted lines for writing the answer.

A series of horizontal dotted lines for writing, spanning the width of the page.

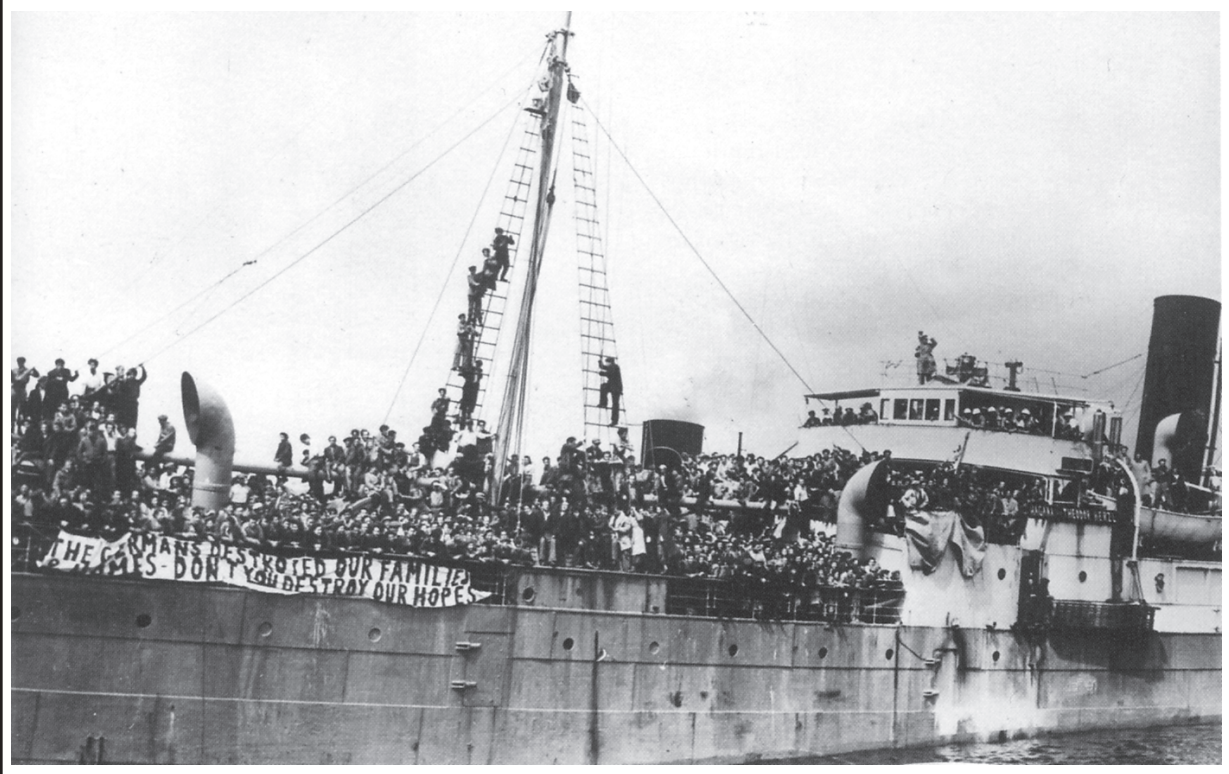
2. This question is about the peoples of Palestine and Israel, 1919-1990.

Study the information below and then answer the questions which follow.

[30]

INFORMATION

The period 1919 to 1990 saw the separate development of Jewish and Palestinian society. The picture shows a Haganah ship arriving in Palestine packed with illegal refugees on board.



(a) What is the PLO?

[2]

.....

.....

.....

.....

.....

.....

(b) Describe life on a kibbutz.

[4]

.....

.....

.....

.....

.....

.....

.....

.....

.....

.....

.....

.....

.....

.....

.....

.....

.....

.....

.....

.....

.....

.....

.....

(c) Explain how the Arabs responded to Jewish immigration to Palestine in the 1920s and 1930s. [6]

.....

.....

.....

.....

.....

.....

.....

.....

.....

.....

.....

.....

.....

.....

.....

.....

.....

.....

.....

.....

.....

.....

.....

.....

.....

.....

(d) How did Jewish immigration after 1948 create problems for Israel?

[8]

A series of horizontal dotted lines for writing an answer.

3. This question is about conflict in the Middle East, 1919-1990.

Study the information below and then answer the questions which follow.

[30]

INFORMATION

There was much conflict in the Middle East between 1919 and 1990. The picture shows Egyptian forces crossing the Suez Canal at the start of the Yom Kippur War in 1973.



(a) What were the Jaffa Riots?

[2]

.....

.....

.....

.....

.....

.....

(b) Describe the events of the Six Day War of 1967.

[4]

.....

.....

.....

.....

.....

.....

.....

.....

.....

.....

.....

.....

.....

.....

.....

.....

.....

(c) Explain the reasons for the growth of Palestinian extremism in the 1960s and 1970s. [6]

.....

.....

.....

.....

.....

.....

.....

.....

.....

.....

.....

.....

.....

.....

.....

.....

.....

.....

.....

.....

.....

.....

.....

.....

.....

.....

A series of horizontal dotted lines for writing, spanning the width of the page.