

Candidate Name	Centre Number	Candidate Number

WELSH JOINT EDUCATION COMMITTEE
General Certificate of Secondary Education



CYD-BWYLLGOR ADDYSG CYMRU
Tystysgrif Gyffredinol Addysg Uwchradd

165/15

HISTORY

SPECIFICATION A: IN-DEPTH AND OUTLINE STUDIES OF ASPECTS OF WELSH/ENGLISH AND WORLD HISTORY

PAPER 2

OUTLINE STUDY

15 - PALESTINE AND ISRAEL IN THE MIDDLE EAST, 1919-1990

A.M. THURSDAY, 15 June 2006

(1 hour 20 minutes)

Questions answered	Office use
Question	30
Question	30
TOTAL	60

INSTRUCTIONS TO CANDIDATES

Write your name, centre number and candidate number in the spaces at the top of this page.

Answer **two** questions.

Write your answers in the spaces provided in this booklet. Use supplementary sheets when there is insufficient room in this booklet. Write your name at the top of each supplementary sheet, indicating clearly the number of the question you answer. Put the supplementary sheets inside this booklet.

INFORMATION FOR CANDIDATES

The number of marks is given in brackets at the end of each question or part-question.

You will be awarded marks for the quality of your written communication.

Your answers must be relevant and must make full use of information given to be awarded full marks for a question.

You are reminded that you should always support your answers using your knowledge and understanding of the topic chosen.

No certificate will be awarded to a candidate detected in any unfair practice during the examination.

Answer any two questions.

1. This question is about the development of Palestine and Israel, 1919-1990.

Study the information below and answer the questions which follow.

[30]

INFORMATION

The development of Palestine and Israel between 1919 and 1990 owed much to individual political leaders. The picture is of Golda Meir, a Prime Minister of Israel.



(a) What was the Exodus?

[2]

.....

.....

.....

.....

.....

.....

(b) Describe the activities of the PLO.

[4]

.....

.....

.....

.....

.....

.....

.....

.....

.....

.....

.....

.....

.....

.....

.....

.....

.....

.....

.....

.....

(c) Explain the importance of the Holocaust for the development of Israel.

[6]

.....

.....

.....

.....

.....

.....

.....

.....

.....

.....

.....

.....

.....

.....

.....

.....

.....

.....

.....

.....

.....

.....

.....

.....

(d) Why was there so much fighting between Jews and Arabs in the 1920s and 1930s? [8]

Dotted lines for student response.

(e) What factors contributed to the changing history of Palestine and Israel between 1919 and 1990?

(In your answer you may wish to consider the problems created by Jewish immigration before the Second World War, the declaration of the State of Israel, the economic and military development of Israel, the situation in 1990 and any other relevant factors.) [10]

Dotted lines for writing the answer.

A series of horizontal dotted lines for writing.

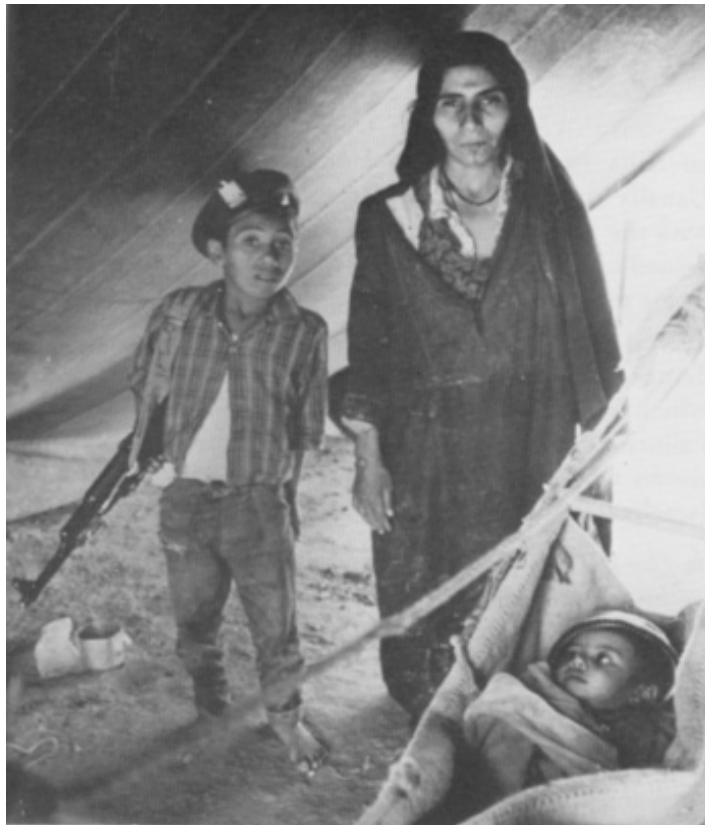
2. This question is about the peoples of Palestine and Israel, 1919-1990.

Study the information below and answer the questions which follow.

[30]

INFORMATION

The period 1919 to 1990 saw the separate development of Jewish and Palestinian society. The picture shows an armed Palestinian boy with his proud mother.



(a) What was the Haganah?

[2]

.....

.....

.....

.....

.....

.....

(b) Describe the massacres at Chatila and Sabra.

[4]

.....

.....

.....

.....

.....

.....

.....

.....

.....

.....

.....

.....

.....

.....

.....

.....

.....

.....

.....

.....

.....

.....

.....

(c) Explain why Britain found it difficult to govern Palestine between 1919 and 1948. [6]

.....

.....

.....

.....

.....

.....

.....

.....

.....

.....

.....

.....

.....

.....

.....

.....

.....

.....

.....

.....

.....

.....

.....

.....

.....

.....

.....

(d) Why was Israel able to develop successfully as a society after 1948?

[8]

A series of horizontal dotted lines provided for writing the answer to question (d).

(e) In what ways did Palestinian and Jewish society develop differently between 1919 and 1990?

(In your answer you may wish to consider the social and cultural differences between Jews and Arabs, problems with Jewish immigration in the 1920s and 1930s, the economic and social development of Israel, the PLO, the situation in 1990 and any other relevant factors.)

[10]

.....

.....

.....

.....

.....

.....

.....

.....

.....

.....

.....

.....

.....

.....

.....

.....

.....

.....

.....

.....

.....

.....

.....

.....

.....

.....

.....

(This area contains horizontal dotted lines for writing.)

3. This question is about conflict in the Middle East, 1919-1990.

Study the information below and answer the questions which follow.

[30]

INFORMATION

There was much conflict in the Middle East between 1919 and 1990. The picture shows young Palestinian boys throwing stones at Israeli troops.



(a) What are the Occupied Territories?

[2]

.....

.....

.....

.....

.....

.....

(b) Describe the Camp David Accords.

[4]

.....

.....

.....

.....

.....

.....

.....

.....

.....

.....

.....

.....

.....

.....

.....

.....

.....

.....

.....

(c) Explain the importance of the Yom Kippur War.

[6]

.....

.....

.....

.....

.....

.....

.....

.....

.....

.....

.....

.....

.....

.....

.....

.....

.....

.....

.....

.....

.....

.....

.....

A series of horizontal dotted lines for writing, spanning the width of the page.