



New GCSE



4383/01

HISTORY (Unitised Specification)

**UNIT 3: Changes in Crime and Punishment,
c. 1530 to the present day**

A.M. FRIDAY, 16 May 2014

1 hour 15 minutes plus your additional time allowance

(FIRST YEAR SITTERS IN WALES ONLY)

Surname _____

Other Names _____

Centre Number _____

Candidate Number 0 _____

Questions answered	Maximum Mark	Mark Awarded
Question	20	
Question	20	
Question	12	
SPaG	3	
Total	55	

INSTRUCTIONS TO CANDIDATES

Use black ink, black ball-point pen or your usual method.

Write your name, centre number and candidate number in the spaces provided on the front cover.

Answer TWO questions from Section A and ONE question from Section B.

Write your answers in the spaces provided in this booklet. If you run out of space, use the continuation page at the back of the booklet, and if this is not sufficient use supplementary sheets. Write your name at the top of each supplementary sheet, indicating clearly the number of the question you answer. Put the supplementary sheets inside this booklet.

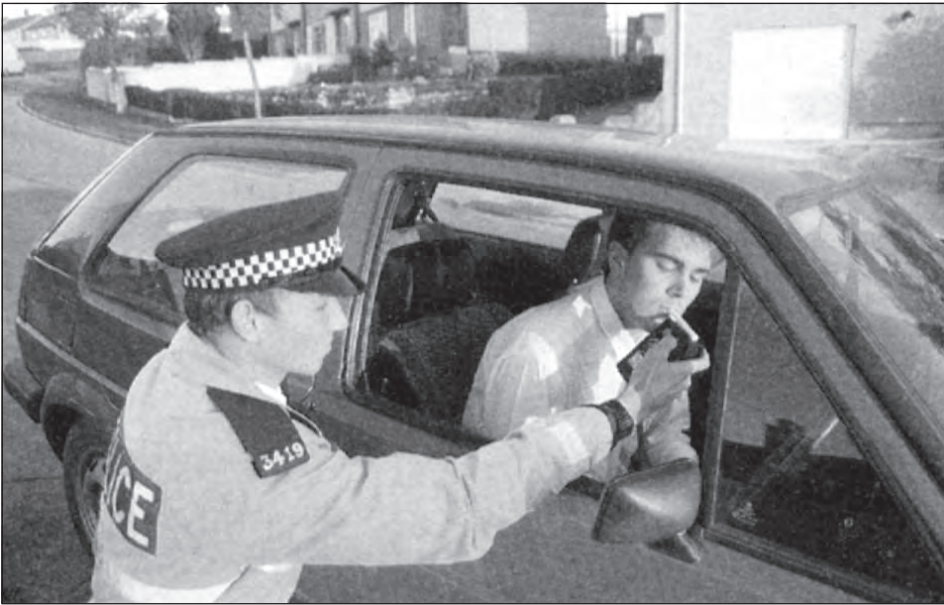
INFORMATION FOR CANDIDATES

The number of marks is given in brackets at the end of each question or part-question.

You are reminded that assessment will take into account the quality of written communication used in your answers that involve extended writing. These are the questions in Section B.

In addition, your ability to spell, punctuate and use grammar accurately will be assessed in your answer to your chosen question in Section B.

SOURCE A



A police officer breathalysing a driver in the 1980s. The police officer is making a man in a car blow into a small machine.

SOURCE B

The widespread use of computers in the late twentieth century has led to all kinds of crime. The people who usually carry out these crimes are often talented individuals who see committing the crime as a challenge. As technology changes so quickly it is difficult for the police to keep up with the criminals.

[From a school textbook]

END OF QUESTION 1

20

SOURCE A

Since the Middle Ages parish constables had acted as JPs' assistants. They made arrests and carried out some punishments. It was a part time job and every man in the village had to serve as a constable, but those with money paid others to take their turn. This system lasted for hundreds of years.

[From a school textbook]

SOURCE B

In 1663 the City of London began to employ paid watchmen to guard the streets at night. The wages were so low that they could only find men that were too old or feeble to do any other type of work. Despite the fact that they were so useless they were probably the only night police force anywhere in the country.

[From a school textbook]

Look at the two sources opposite about policing in the sixteenth and seventeenth centuries and answer the question that follows.

2(b) Explain why there were few improvements in policing in the sixteenth and seventeenth centuries. [7]

[In your answer, you should use the information provided in the sources and your own knowledge to show the extent of improvement and the reasons for this]

END OF QUESTION 2

20

SOURCE A

During the twentieth century there was a change in attitude towards the punishment of the most serious offenders. The Abolition of the Death Penalty Act in 1969 made life imprisonment the replacement for hanging.

[From a school textbook]

SOURCE B



[Minor offenders doing community service in 2008.]

They are wearing identical coats and are cleaning graffiti off some shutters.

END OF QUESTION 3

20

SECTION B

Answer ONE question only from this section.

Marks for spelling, punctuation and the accurate use of grammar are allocated to this question. [3]

EITHER,

- 4. How far have causes of crime stayed the same from Tudor times to the present day? [12]**

You may wish to discuss the following in your answer:

The effects of religious changes

Poverty as a cause of crime

The impact of bad working conditions

The pressures of modern society

and any other relevant factors.

OR,

- 5. Have methods of combating crime always been successful from Tudor times to the present day?**

[12]

You may wish to discuss the following in your answer:

**The effectiveness of Tudor and Stuart watchmen
The development of the Metropolitan Police
Increasing police specialisation
Modern day problems
and any other relevant factors.**

OR,

- 6. How far have methods of punishing offenders stayed the same from Tudor times to the present day? [12]**

You may wish to discuss the following in your answer:

**The use of public punishment
Imprisonment as a form of punishment
The abolition of the death penalty
Probation and community service
and any other relevant factors.**

You may only answer one question from Section B.

END OF PAPER

12

SPaG
3

