

A4: The Rise and Fall of The Communist State: the Soviet Union, 1928-91

Answer ONE question only from this section.
You must answer Part (a) and Part (b) of the question you choose.

7. (a) Part (a) of this question is about Stalin's rule in the Soviet Union in the period 1928-45. Look at the photograph below of a show trial and then answer all the questions which follow.



- (i) Give ONE reason to explain why Stalin introduced the show trials in the 1930s. (3)
- (ii) Describe the key features of the cult of personality. (5)
- (iii) In what ways did Stalin control education and religion in the years 1928-45? (5)
- (iv) What were the effects of the purges on the Soviet Union in the years to 1941? (7)

(Total marks: 20)

ESSAY QUESTION

(b) Part (b) of this question is about Stalin's agricultural and industrial policies.

- (i) Why was there so much opposition to collectivisation in the 1930s? **(10)**
- (ii) In what ways was the Soviet Union and the lives of its people changed by the Five Year Plans in the years 1928-41? **(15)**

You may use the following information to help you with your answer.

Modernisation of industry
Control of the workforce
Growth of heavy industry
Production of consumer goods

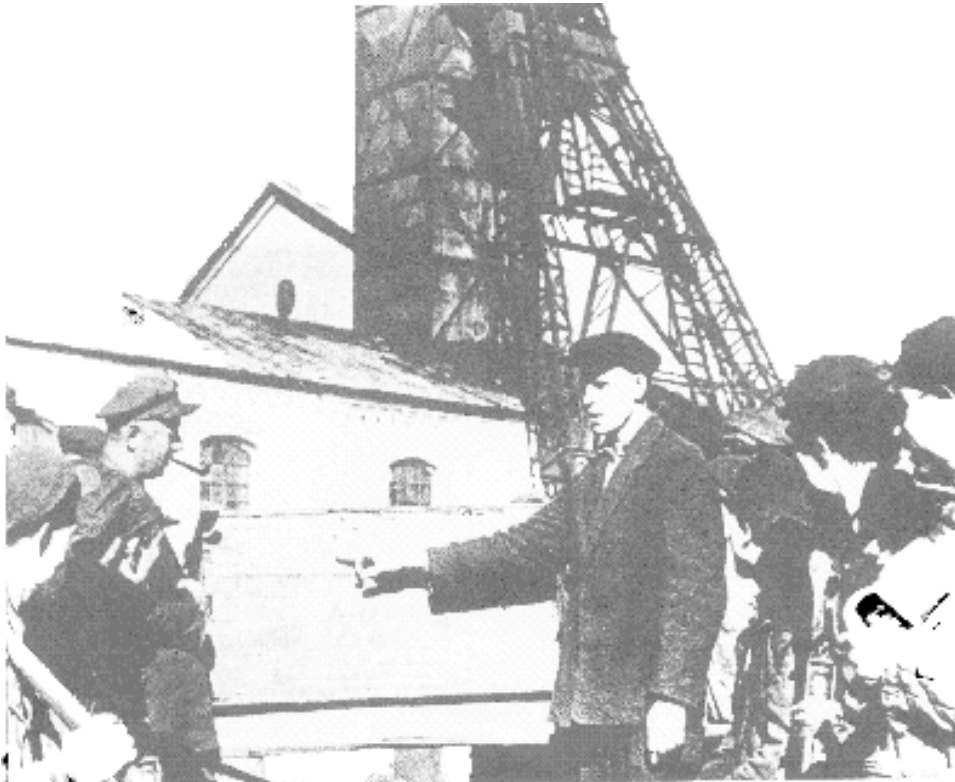
(Total marks: 25)

(Total for Part (a) and Part (b): 45 marks)

A4: The Rise and Fall of The Communist State: the Soviet Union, 1928-91

If you have answered Question 7 do NOT answer Question 8.

8. (a) Part (a) of this question is about the agriculture and industrialisation of the Soviet Union in the years 1928-41. The photograph below shows Alexei Stakhanov talking to Miners at the Donbass coalfield. Look at the photograph below and then answer all the questions which follow.



- (i) Give ONE reason to explain why the Stakhanovite Movement was introduced by Stalin. (3)
- (ii) Why did Stalin introduce the Five Year Plans? (5)
- (iii) What were the effects of the Five Year Plans on Soviet industry in the years 1928-41? (5)
- (iv) Describe the key features of Stalin's policy of collectivisation. (7)

(Total marks: 20)

ESSAY QUESTION

(b) Part (b) of this question is about the collapse of Soviet Rule.

(i) Describe the key features of *glasnost* and *perestroika*. (10)

(ii) Why did Gorbachev resign as leader of USSR in 1991? (15)

You may use the following information to help you with your answer.

Economic problems Problems in Eastern Europe Impact of <i>glasnost</i> and <i>perestroika</i> The role of Boris Yeltsin
--

(Total marks: 25)

(Total for Part (a) and Part (b): 45 marks)