

Write your name here

Surname

Other names

**Pearson
Edexcel GCSE**

Centre Number

--	--	--	--	--

Candidate Number

--	--	--	--

**History A (The Making of the Modern World)
Unit 1: Peace and War: International Relations,
1900–91**

Friday 16 May 2014 – Morning

Time: 1 hour 15 minutes

Paper Reference

5HA01/01

You do not need any other materials.

Total Marks

Instructions

- Use **black** ink or ball-point pen.
- **Fill in the boxes** at the top of this page with your name, centre number and candidate number.
- Answer **three** sections.
- Answer the questions in the spaces provided
– *there may be more space than you need.*

Information

- The total mark for this paper is 60.
- The marks for **each** question are shown in brackets
– *use this as a guide as to how much time to spend on each question.*

Advice

- Read each question carefully before you start to answer it.
- Keep an eye on the time.
- Check your answers if you have time at the end.

Turn over ►

P42686A

©2014 Pearson Education Ltd.

1/1/1/1



PEARSON

There are SIX sections in this question paper. You must choose THREE sections from the six.

In EACH section answer Part (a), EITHER Part (b)(i) OR Part (b)(ii) AND then Part (c).

Contents

Section 1: Why did war break out? International rivalry, 1900–14	Page 3
Section 2: The peace settlement, 1918–28	Page 9
Section 3: Why did war break out? International relations, 1929–39	Page 15
Section 4: How did the Cold War develop? 1943–56	Page 21
Section 5: Three Cold War crises: Berlin, Cuba and Czechoslovakia, c1957–69	Page 27
Section 6: Why did the Cold War end? The invasion of Afghanistan (1979) to the collapse of the Soviet Union (1991)	Page 33



If you answer Section 1 put a cross in this box .

SECTION 1
Why did war break out? International rivalry, 1900–14

Answer Part (a), EITHER Part (b)(i) OR Part (b)(ii) AND then Part (c).

The photograph below shows Greek soldiers during the First Balkan War (1912–13).



Question 1

Answer Part (a).

(a) Describe **one** cause of the First Balkan War, 1912–13.

(2)

.....

.....

.....

.....

.....

.....





Answer EITHER Part (b)(i) OR Part (b)(ii).

EITHER

(b) (i) Describe the key features of the Triple Alliance. (6)

OR

(b) (ii) Describe the key features of the Second Balkan War, 1913. (6)

Indicate which question you are answering by marking a cross in the box . If you change your mind, put a line through the box and then indicate your new question with a cross .

Chosen Question Number: **Part (b)(i)** **Part (b)(ii)**

.....

.....

.....

.....

.....

.....

.....

.....

.....

.....

.....

.....

.....

.....

.....

.....

.....

.....

.....

.....

.....

.....

.....

.....



Lined writing area with 25 horizontal dotted lines.





Answer Part (c).

(c) Explain why the two Moroccan Crises worsened relations between Britain and Germany in the years 1905–11.

(12)

Ruled writing area for the answer.



Lined writing area with horizontal dotted lines.





Handwriting practice area with 20 horizontal dotted lines.

TOTAL FOR SECTION 1 = 20 MARKS

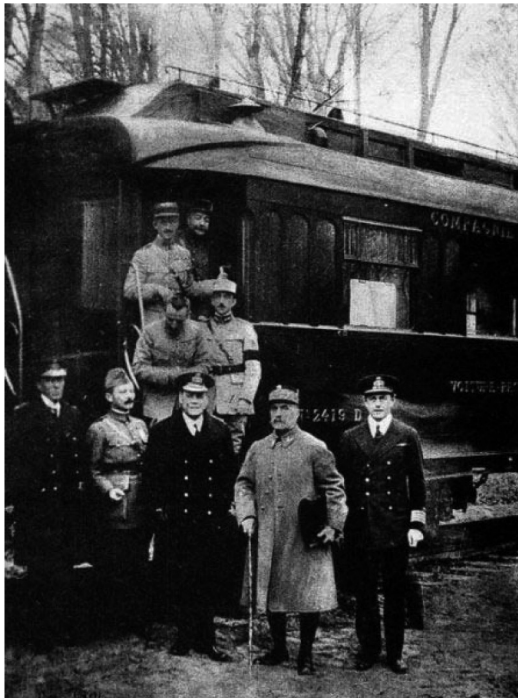


If you answer Section 2 put a cross in this box .

SECTION 2
The peace settlement, 1918–28

Answer Part (a), EITHER Part (b)(i) OR Part (b)(ii) AND then Part (c).

The photograph below shows the Allied representatives at the signing of the armistice, November 1918.



Question 2

Answer Part (a).

(a) Describe **one** reason why Germany signed the armistice in November 1918.

(2)

.....

.....

.....

.....

.....

.....



Answer EITHER Part (b)(i) OR Part (b)(ii).

EITHER

(b) (i) Describe the key features of the aims of President Wilson at the Paris Peace Conference, 1919. (6)

OR

(b) (ii) Describe the key features of the Secretariat and the refugee organisation of the League of Nations. (6)

Indicate which question you are answering by marking a cross in the box . If you change your mind, put a line through the box and then indicate your new question with a cross .

Chosen Question Number: **Part (b)(i)** **Part (b)(ii)**

.....

.....

.....

.....

.....

.....

.....

.....

.....

.....

.....

.....

.....

.....

.....

.....

.....

.....

.....

.....

.....

.....



Lined writing area with 25 horizontal dotted lines.



Lined writing area with 25 horizontal dotted lines.





Handwriting practice area with 25 horizontal dotted lines.

TOTAL FOR SECTION 2 = 20 MARKS



If you answer Section 3 put a cross in this box .

SECTION 3
Why did war break out? International relations, 1929–39

Answer Part (a), EITHER Part (b)(i) OR Part (b)(ii) AND then Part (c).

The photograph below shows German soldiers marching into Poland, September 1939.



© Getty Images

Question 3

Answer Part (a).

(a) Describe **one** reason why Germany invaded Poland in September 1939.

(2)

.....

.....

.....

.....

.....

.....



Answer EITHER Part (b)(i) OR Part (b)(ii).

EITHER

(b) (i) Describe how Hitler broke the terms of the Treaty of Versailles in the years 1933–36. (6)

OR

(b) (ii) Describe how Hitler made territorial gains for Germany in 1938. (6)

Indicate which question you are answering by marking a cross . If you change your mind, put a line through the box and then indicate your new question with a cross .

Chosen Question Number: **Part (b)(i)** **Part (b)(ii)**

.....

.....

.....

.....

.....

.....

.....

.....

.....

.....

.....

.....

.....

.....

.....

.....

.....

.....

.....

.....

.....

.....

.....

.....



Lined writing area with 25 horizontal dotted lines.



Answer Part (c).

(c) Explain why there was an international crisis over Abyssinia in the years 1935–36.

(12)

Dotted lines for writing the answer.



Lined writing area with 20 horizontal dotted lines.



Handwriting practice area with 20 horizontal dotted lines.

TOTAL FOR SECTION 3 = 20 MARKS



If you answer Section 4 put a cross in this box .

SECTION 4
How did the Cold War develop? 1943–56

Answer Part (a), EITHER Part (b)(i) OR Part (b)(ii) AND then Part (c).

The image below shows the flag of the Comecon organisation.



Question 4

Answer Part (a).

(a) Describe **one** reason why Comecon was formed in 1949.

(2)

.....

.....

.....

.....

.....

.....



Answer EITHER Part (b)(i) OR Part (b)(ii).

EITHER

(b) (i) Describe the key features of the Warsaw Pact, 1955. (6)

OR

(b) (ii) Describe the key features of the impact of de-Stalinisation on Hungary. (6)

Indicate which question you are answering by marking a cross in the box ☒. If you change your mind, put a line through the box ~~☒~~ and then indicate your new question with a cross ☒.

Chosen Question Number: **Part (b)(i)** ☒ **Part (b)(ii)** ☒

.....

.....

.....

.....

.....

.....

.....

.....

.....

.....

.....

.....

.....

.....

.....

.....

.....

.....

.....

.....

.....

.....

.....

.....



Lined writing area with 25 horizontal dotted lines.



Answer Part (c).

(c) Explain why events in Europe in the years 1945–47 led to the Cold War.

(12)

Dotted lines for writing the answer.



Handwriting practice area with 25 horizontal dotted lines.





Handwriting practice area with 25 horizontal dotted lines.

TOTAL FOR SECTION 4 = 20 MARKS



If you answer Section 5 put a cross in this box .

SECTION 5
Three Cold War crises: Berlin, Cuba and Czechoslovakia, c1957–69

Answer Part (a), EITHER Part (b)(i) OR Part (b)(ii) AND then Part (c).

The photograph below shows Khrushchev at a press conference before the Paris Summit, May 1960.



Question 5

Answer Part (a).

- (a) Describe **one** reason why Eisenhower and Khrushchev held the summit conference in Paris in May 1960.

(2)

.....

.....

.....

.....

.....

.....

.....



Answer EITHER Part (b)(i) OR Part (b)(ii).

EITHER

(b) (i) Describe how Castro developed his friendship with the Soviet Union in the years 1959–62. (6)

OR

(b) (ii) Describe how Berlin became a flashpoint in the Cold War in the years 1961–63. (6)

Indicate which question you are answering by marking a cross in the box ☒. If you change your mind, put a line through the box ~~☒~~ and then indicate your new question with a cross ☒.

Chosen Question Number: Part (b)(i) ☒ Part (b)(ii) ☒

.....

.....

.....

.....

.....

.....

.....

.....

.....

.....

.....

.....

.....

.....

.....

.....

.....

.....

.....

.....

.....

.....

.....

.....



Lined writing area with horizontal dashed lines.



Answer Part (c).

(c) Explain why Czechoslovakia became a problem for the Soviet Union in 1968.

(12)

Ruled area for writing the answer to question (c).



Lined writing area with horizontal dotted lines.





Handwriting practice area with 25 horizontal dotted lines.

TOTAL FOR SECTION 5 = 20 MARKS



If you answer Section 6 put a cross in this box .

SECTION 6
Why did the Cold War end?
The invasion of Afghanistan (1979) to the collapse of the Soviet Union (1991)

Answer Part (a), EITHER Part (b)(i) OR Part (b)(ii) AND then Part (c).

The photograph below shows leaders of the USA and the Soviet Union at the Helsinki conference, 1975.



Question 6

Answer Part (a).

- (a) Describe **one** decision made by the USA and the Soviet Union in the Helsinki Agreements, 1975.

(2)

.....

.....

.....

.....

.....

.....



Answer EITHER Part (b)(i) OR Part (b)(ii).

EITHER

(b) (i) Describe the key features of the role of Gorbachev in improving relations between the Soviet Union and the USA in the years 1985–89. (6)

OR

(b) (ii) Describe the key features of the collapse of the Warsaw Pact in 1991. (6)

Indicate which question you are answering by marking a cross . If you change your mind, put a line through the box and then indicate your new question with a cross .

Chosen Question Number: **Part (b)(i)** **Part (b)(ii)**

.....

.....

.....

.....

.....

.....

.....

.....

.....

.....

.....

.....

.....

.....

.....

.....

.....

.....

.....

.....

.....

.....

.....

.....



Lined writing area with 25 horizontal dotted lines.



Lined writing area with horizontal dotted lines.





Area with horizontal dotted lines for writing.

TOTAL FOR SECTION 6 = 20 MARKS
TOTAL FOR PAPER = 60 MARKS



BLANK PAGE



BLANK PAGE

Edexcel, a product of Pearson Education Limited., gratefully acknowledges the following sources used in the preparation of this paper:

Section 5: © Erich Lessing Kunst und Kulturarchiv GesmbH

Section 6: © 2013 Courtesy Gerald R. Ford Presidential Library

Every effort has been made to contact copyright holders to obtain their permission for the use of copyright material. Edexcel, a product of Pearson Education Ltd. will, if notified, be happy to rectify any errors or omissions and include any such rectifications in future editions.

