

OXFORD CAMBRIDGE AND RSA EXAMINATIONS
GCSE

A914/02

HEALTH AND SOCIAL CARE
Safeguarding and Protecting
Individuals

TUESDAY 25 JUNE 2013: Morning

DURATION: 1 hour
plus your additional time allowance

MODIFIED ENLARGED

Candidate forename		Candidate surname	
-------------------------------	--	------------------------------	--

Centre number						Candidate number				
--------------------------	--	--	--	--	--	-----------------------------	--	--	--	--

Candidates answer on the Question Paper.

OCR SUPPLIED MATERIALS:

None

OTHER MATERIALS REQUIRED:

None

READ INSTRUCTIONS OVERLEAF

INSTRUCTIONS TO CANDIDATES

- **Write your name, centre number and candidate number in the boxes on the first page. Please write clearly and in capital letters.**
- **Use black ink. Pencil may be used for graphs and diagrams only.**
- **Read each question carefully. Make sure you know what you have to do before starting your answer.**
- **Write your answer to each question in the space provided. If additional space is required, you should use the lined pages at the end of this booklet. The question number(s) must be clearly shown.**
- **Answer ALL the questions.**

INFORMATION FOR CANDIDATES

- **The number of marks is given in brackets [] at the end of each question or part question.**
- **Quality of Written Communication will be assessed in questions 3, 6, 11, 14 and 17.**
- **The total number of marks for this paper is 60.**
- **Any blank pages are indicated.**

1 Identify TWO basic precautions to reduce the spread of infection.

1 _____

2 _____ **[2]**

2 A child vomits on the floor at nursery.

Describe how staff should deal with this spillage.

[4]

3 Discuss good food hygiene practices when preparing a snack in a care setting.

Marks will be awarded for the quality of written communication in your answer.

[illegible]

4 Which THREE of the following must be reported under infection control legislation?

malaria

scald

diabetes

over-flowing drain

typhus

influenza

1 _____

2 _____

3 _____

[3]

- 5 Identify TWO different types of abuse and give an example of each.**

Type of abuse	Example

[4]

- 6 Tom's parents are always arguing.**

Describe the possible effects on Tom of his parents' behaviour.

Marks will be awarded for the quality of written communication in your answer.

[5]

7 Many people working in care settings are CRB checked.

What is meant by the abbreviation CRB?

[1]

8 Explain the purpose of a CRB check.

[2]

9 Identify THREE aims of the Every Child Matters guidelines.

1 _____

2 _____

3 _____

[3]

10 Anaphylactic shock is a health emergency.

Identify TWO signs of anaphylactic shock.

1 _____

2 _____

[2]

11 Explain the first aid procedure to follow for anaphylactic shock.

Marks will be awarded for the quality of written communication in your answer.

[4]

12 Identify ONE other health emergency.

_____ [1]

13 Describe TWO principles of first aid.

1 _____

2 _____

[4]

14 Several people have been injured in an accident.

Explain how a first aider should prioritise treatment.

Marks will be awarded for the quality of written communication in your answer.

[4]

15 Identify THREE security measures that could be put in place in a residential home.

Explain the importance of each measure.

Security measure 1 _____

Explanation _____

Security measure 2 _____

Explanation _____

Security measure 3 _____

Explanation _____

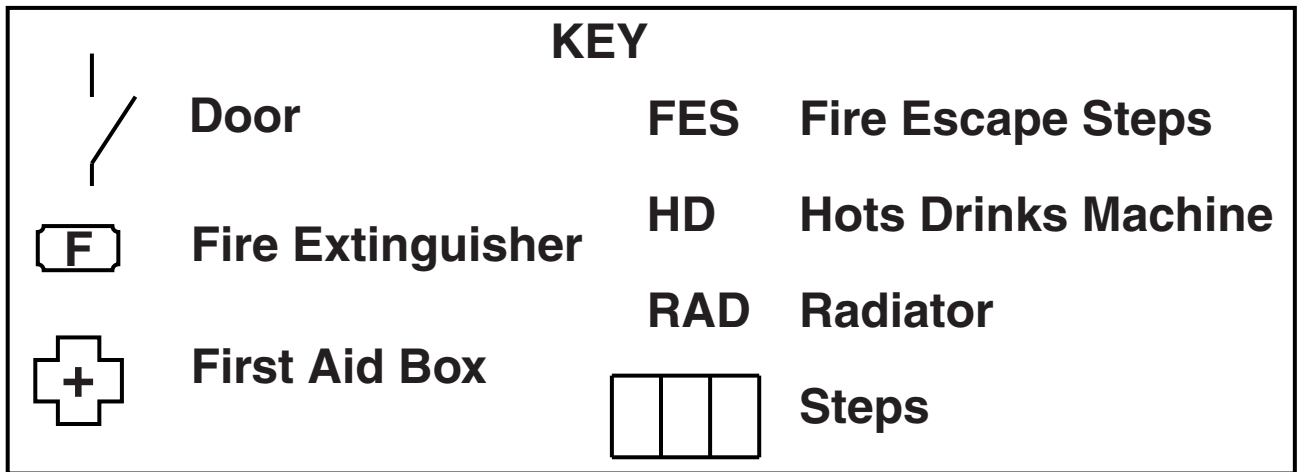
[6]

16 Identify the sign below.

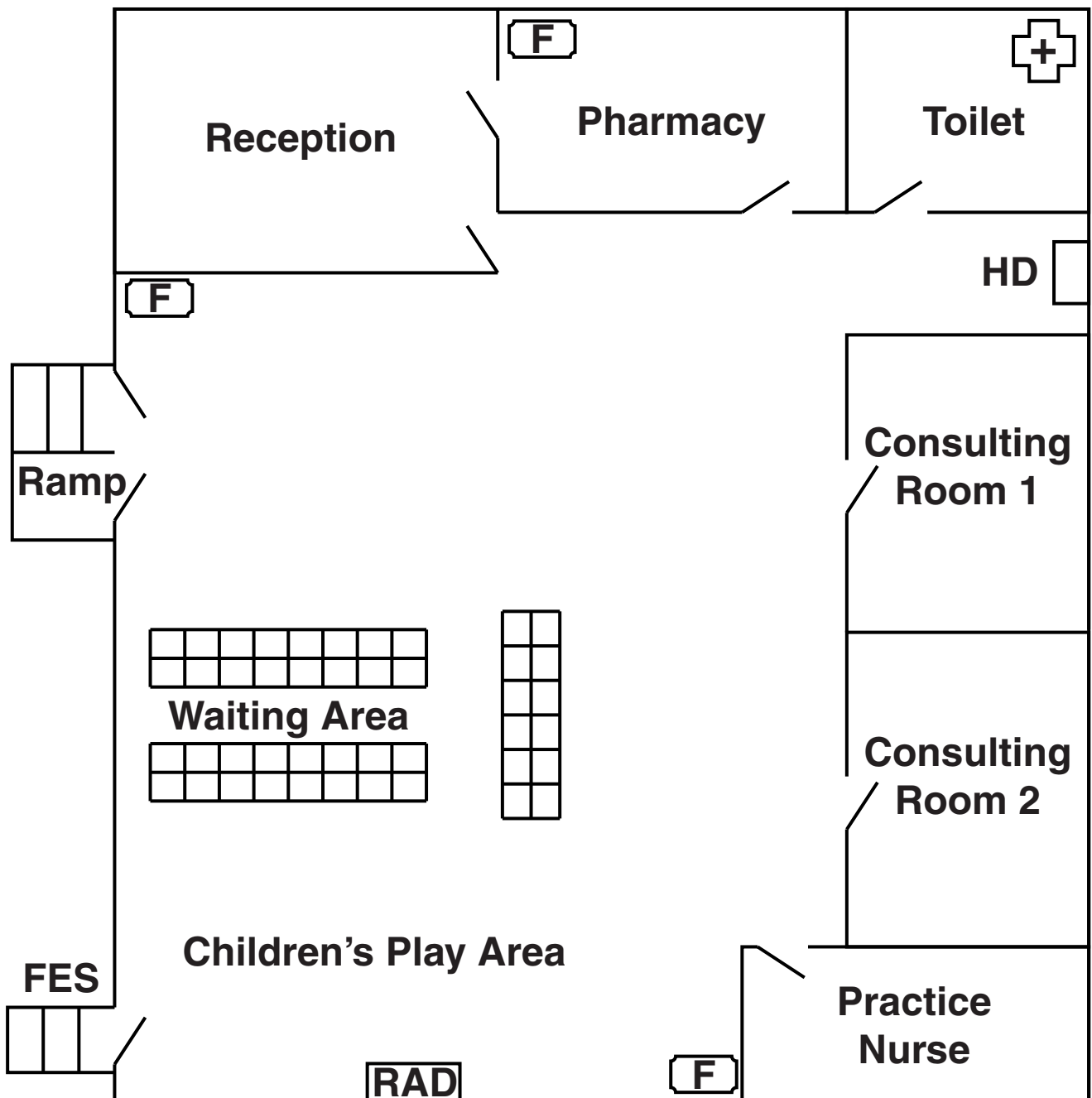


_____ [1]

BLANK PAGE



PLAN OF GP SURGERY



END OF QUESTION PAPER

ADDITIONAL ANSWER SPACE

If additional answer space is required, you should use the following lined page(s). The question number(s) must be clearly shown in the margins.

[illegible]

[illegible]

BLANK PAGE

BLANK PAGE

BLANK PAGE

Copyright Information

OCR is committed to seeking permission to reproduce all third-party content that it uses in its assessment materials. OCR has attempted to identify and contact all copyright holders whose work is used in this paper. To avoid the issue of disclosure of answer-related information to candidates, all copyright acknowledgements are reproduced in the OCR Copyright Acknowledgements Booklet. This is produced for each series of examinations and is freely available to download from our public website (www.ocr.org.uk) after the live examination series.

If OCR has unwittingly failed to correctly acknowledge or clear any third-party content in this assessment material, OCR will be happy to correct its mistake at the earliest possible opportunity.

For queries or further information please contact the Copyright Team, First Floor, 9 Hills Road, Cambridge CB2 1GE.

OCR is part of the Cambridge Assessment Group; Cambridge Assessment is the brand name of University of Cambridge Local Examinations Syndicate (UCLES), which is itself a department of the University of Cambridge.

