

Wednesday 25 January 2012 – Afternoon

GCSE HEALTH AND SOCIAL CARE

A914/02 Safeguarding and Protecting Individuals

Candidates answer on the Question Paper.

OCR supplied materials:

None

Other materials required:

None

Duration: 1 hour



Candidate forename		Candidate surname	
-----------------------	--	----------------------	--

Centre number						Candidate number				
---------------	--	--	--	--	--	------------------	--	--	--	--

INSTRUCTIONS TO CANDIDATES

- Write your name, centre number and candidate number in the boxes above. Please write clearly and in capital letters.
- Use black ink. Pencil may be used for graphs and diagrams only.
- Read each question carefully. Make sure you know what you have to do before starting your answer.
- Write your answer to each question in the space provided. If additional space is required, you should use the lined pages at the end of this booklet. The question number(s) must be clearly shown.
- Answer **all** the questions.
- Do **not** write in the bar codes.

INFORMATION FOR CANDIDATES

- The number of marks is given in brackets [] at the end of each question or part question.
- The total number of marks for this paper is **60**.
- This document consists of **12** pages. Any blank pages are indicated.

5 Select the correct working temperature for a refrigerator from the following list.

- 18°C
- 2°C
- +5°C
- +10°C

..... [1]

6 Explain where raw meat should be stored in a refrigerator.

.....
.....
.....
.....
.....
.....
..... [3]

7 Describe the purpose of the Food Safety (General Food Hygiene) Regulations in relation to infection control.

.....
.....
.....
..... [2]

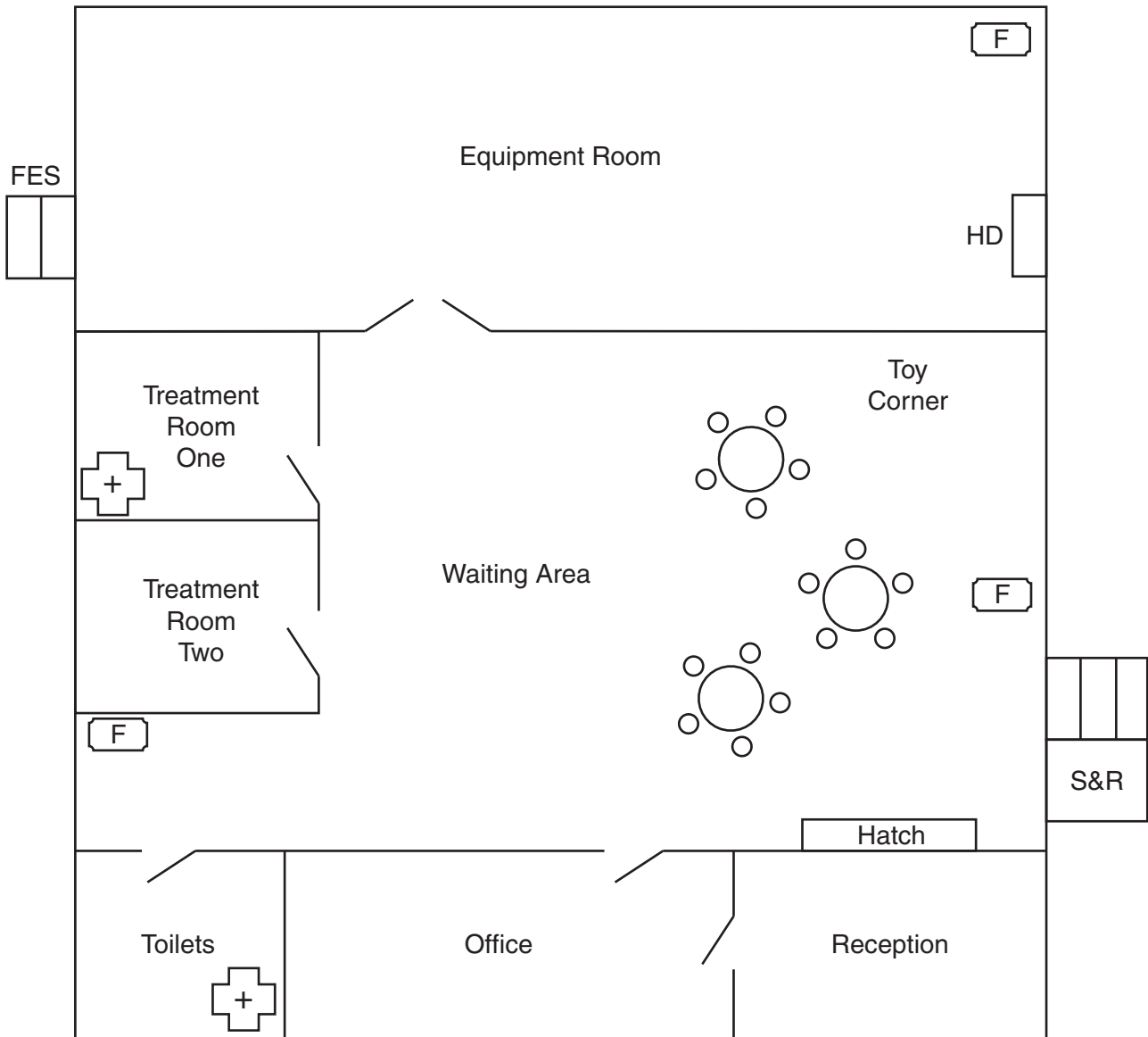
8 Describe how vaccinations/immunisation help to prevent the spread of infection.

.....
.....
.....
..... [2]







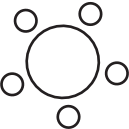
BLANK PAGE

PLEASE DO NOT WRITE ON THIS PAGE

Plan of Physiotherapy Clinic



Key

- | | | | |
|---|-------------------|---|--------------------|
|  | First Aid Box |  | Fire Escape Steps |
|  | Door |  | Hot Drinks Machine |
|  | Fire Extinguisher |  | Steps and Ramp |
|  | Table and Chairs | | |

A series of 25 horizontal dotted lines spanning the width of the page, providing a template for writing.

