

GENERAL CERTIFICATE OF SECONDARY EDUCATION
HEALTH AND SOCIAL CARE
Safeguarding and Protecting Individuals

A914

Candidates answer on the question paper.

OCR supplied materials:

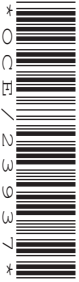
None

Other materials required:

None

Tuesday 21 June 2011
Afternoon

Duration: 1 hour



Candidate forename		Candidate surname	
-----------------------	--	----------------------	--

Centre number						Candidate number				
---------------	--	--	--	--	--	------------------	--	--	--	--

INSTRUCTIONS TO CANDIDATES

- Write your name, centre number and candidate number in the boxes above. Please write clearly and in capital letters.
- Use black ink. Pencil may be used for graphs and diagrams only.
- Read each question carefully. Make sure you know what you have to do before starting your answer.
- Write your answer to each question in the space provided. If additional space is required, you should use the lined pages at the end of this booklet. The question number(s) must be clearly shown.
- Answer **all** the questions.
- Do **not** write in the bar codes.

INFORMATION FOR CANDIDATES

- The number of marks is given in brackets [] at the end of each question or part question.
- The total number of marks for this paper is **60**.
- This document consists of **12** pages. Any blank pages are indicated.

1 Give **one** reason for the use of disinfectant in care settings.

..... [1]

2 Wearing jewellery in food preparation areas is not allowed. Give **two** reasons for this rule.

1

2 [2]

3 You have been asked by a care setting to produce information about notifiable diseases which must be reported under Reporting of Injuries, Diseases and Dangerous Occurrences Regulations 1995 (RIDDOR).

Identify **four** diseases that must be reported.

1

2

3

4 [4]

4 Mice droppings have been found in the kitchen of a residential home.

Identify **two** actions that could be taken to prevent this happening again.

1

2 [2]

12 Identify **two** aims of Every Child Matters. Explain how each aim contributes to safeguarding young people in a school.

1

.....

.....

.....

.....

2

.....

.....

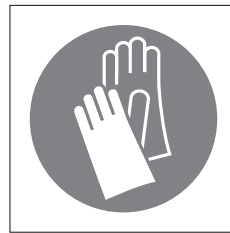
.....

..... [4]

13 Identify each sign below.



A



B

A

B [2]

14 Identify **three** safety features and describe how each could prevent vulnerable older people leaving their residential home on their own.

1

.....

.....

2

.....

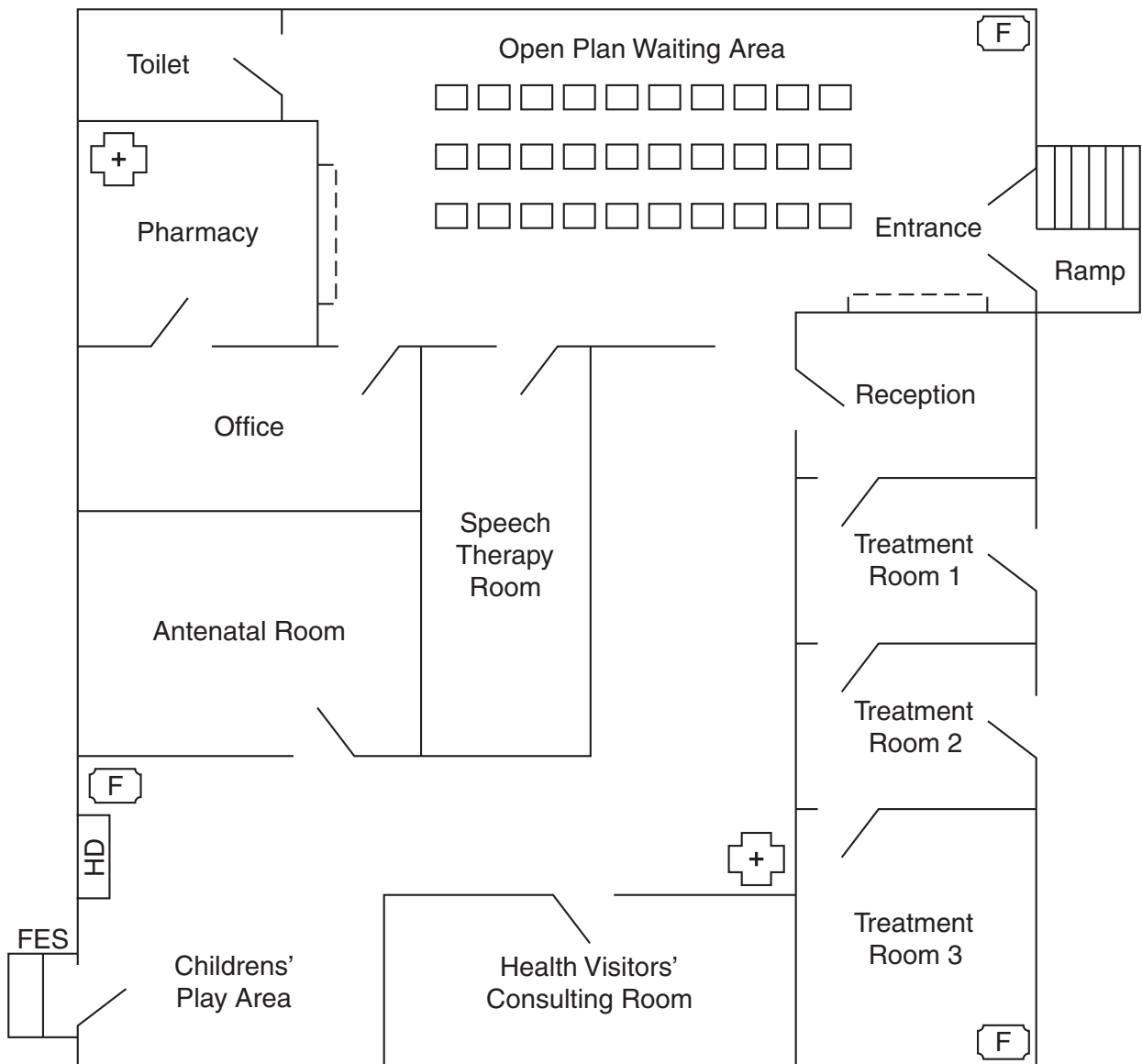
.....

3

.....

..... [6]

Plan of Health Centre



- | | | | |
|--|-------------------|-----|--------------------|
| | First Aid Box | | Counter |
| | Door | FES | Fire Escape Steps |
| | Fire Extinguisher | HD | Hot Drinks machine |
| | Chair | | Steps |



Copyright Information

OCR is committed to seeking permission to reproduce all third-party content that it uses in its assessment materials. OCR has attempted to identify and contact all copyright holders whose work is used in this paper. To avoid the issue of disclosure of answer-related information to candidates, all copyright acknowledgements are reproduced in the OCR Copyright Acknowledgements Booklet. This is produced for each series of examinations and is freely available to download from our public website (www.ocr.org.uk) after the live examination series. If OCR has unwittingly failed to correctly acknowledge or clear any third-party content in this assessment material, OCR will be happy to correct its mistake at the earliest possible opportunity.

For queries or further information please contact the Copyright Team, First Floor, 9 Hills Road, Cambridge CB2 1GE.

OCR is part of the Cambridge Assessment Group; Cambridge Assessment is the brand name of University of Cambridge Local Examinations Syndicate (UCLES), which is itself a department of the University of Cambridge.