



**GENERAL CERTIFICATE OF SECONDARY EDUCATION
HEALTH AND SOCIAL CARE**

A914

Unit 4: Safeguarding and Protecting Individuals

Candidates answer on the Question Paper

OCR Supplied Materials:
None

Other Materials Required:
None

**Tuesday 26 January 2010
Afternoon**

Duration: 1 hour



Candidate Forename		Candidate Surname	
--------------------	--	-------------------	--

Centre Number						Candidate Number				
---------------	--	--	--	--	--	------------------	--	--	--	--

INSTRUCTIONS TO CANDIDATES

- Write your name clearly in capital letters, your Centre Number and Candidate Number in the boxes above.
- Use black ink. Pencil may be used for graphs and diagrams only.
- Read each question carefully and make sure that you know what you have to do before starting your answer.
- Answer **all** the questions.
- Do **not** write in the bar codes.
- Write your answer to each question in the space provided, however additional paper may be used if necessary.

INFORMATION FOR CANDIDATES

- The number of marks is given in brackets [] at the end of each question or part question.
- The total number of marks for this paper is **60**.
- This document consists of **12** pages. Any blank pages are indicated.

1 Identify **two** types of abuse children could suffer.

1

2 [2]

2 Name **one** piece of legislation that helps to keep children safe.

..... [1]

3 Explain **one** way a care worker could prevent the spread of infection.

.....

.....

..... [2]

4 Identify **three** pieces of information that should be given when calling the emergency services. Explain why each piece of information is important.

1

Explanation

.....

.....

2

Explanation

.....

.....

3

Explanation

.....

..... [6]

5 Name **one** hazardous substance that is included in the legislation for the Control of Substances Hazardous to Health (COSHH).

..... [1]

6 Explain the difference between a 'sign' and a 'symptom'.

.....
.....
..... [2]

7 Give **two** ways a first aider should monitor a casualty whilst waiting for an ambulance.

1
.....
2
..... [2]

8 Beatrice has fainted.

Describe **one** first aid action that should be carried out.

.....
..... [2]

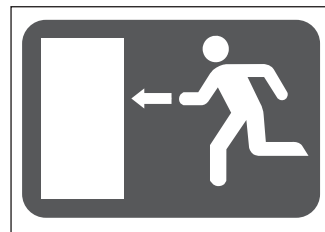
9 Identify each sign below.



A



B



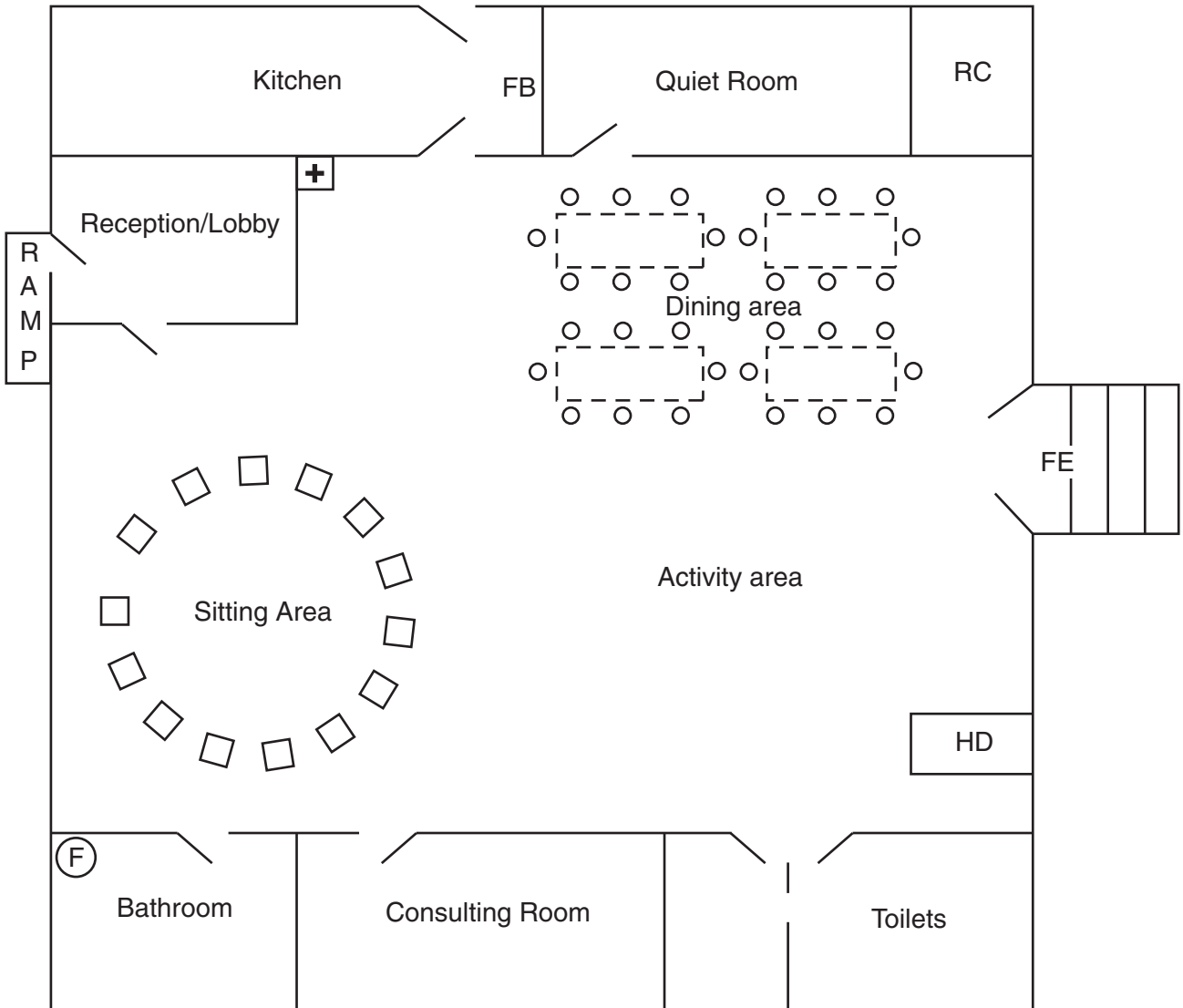
C

A
B
C [3]

7
BLANK PAGE

PLEASE DO NOT WRITE ON THIS PAGE

Plan of Day Centre



- | | | | |
|----|--------------------|--|-------------------|
| HD | Hot Drinks Machine | | Door |
| RC | Resource Cupboard | | Fire Extinguisher |
| FE | Fire Exit | | Steps |
| FB | Fire Blanket | | Lounge Chair |
| | | | Table and chairs |
| | | | First Aid Box |

