



GCSE

4261/02

GERMAN

UNIT 1: LISTENING

HIGHER TIER

A.M. WEDNESDAY, 8 June 2016

45 minutes approximately plus your additional time allowance

Surname _____

Other Names _____

Centre Number _____

Candidate Number 0 _____

For Examiner's use only		
Question	Maximum Mark	Mark Awarded
1.	4	
2.	4	
3.	8	
4.	9	
5.	8	
6.	7	
Total Mark	40	

INSTRUCTIONS TO CANDIDATES

Use black ink, black ball-point pen or your usual method.

Write your name, centre number and candidate number in the spaces provided on the front cover.

Answer ALL the questions. Where numbers are required, figures may be used.

You will hear a CD which contains a number of items in German and you will answer questions on each of these IN ENGLISH, unless otherwise instructed.

Write your answers in the spaces provided in this question paper.

INFORMATION FOR CANDIDATES

DICTIONARIES ARE NOT ALLOWED.

Before you hear the CD, you will be allowed FIVE MINUTES to read the questions.

The CD will be played. After hearing the voices of the German speakers used on the CD, you will hear question 1 as it appears in your answer book. The German item will then follow. At the end of this there will be a pause and the item will then be repeated.

All other questions will be heard in the same way.

There will be a pause of approximately TWO MINUTES at the end of the test before answer books are collected.

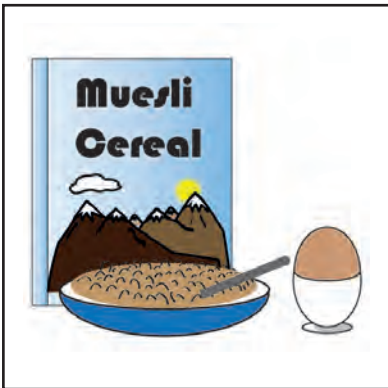
YOU MAY MAKE NOTES OR WRITE YOUR ANSWERS AT ANY TIME.

The number of marks is given in brackets at the end of each question or part-question.

1. Friends are talking about food.

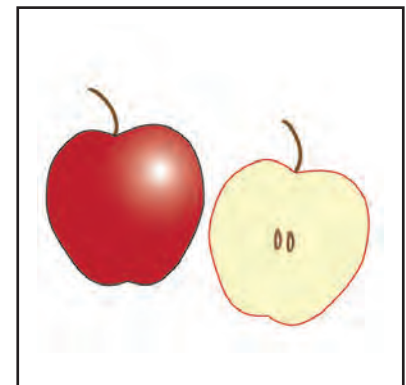
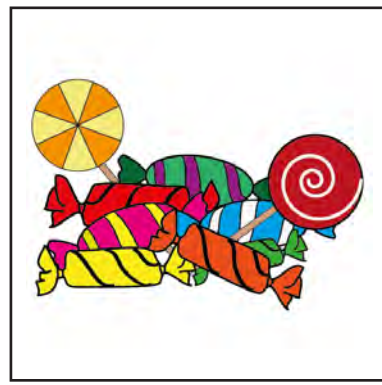
(a) What does she eat?

Tick (✓) the correct box. [1]



(b) What does he eat at break?

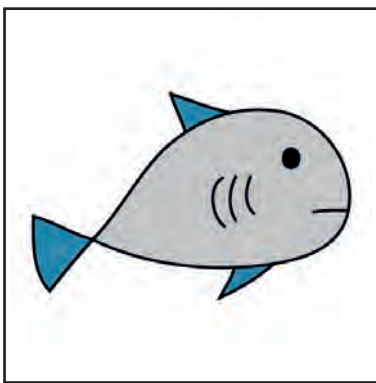
Tick (✓) the correct box. [1]



1(c) What does she eat occasionally?
Tick (✓) the correct box. [1]



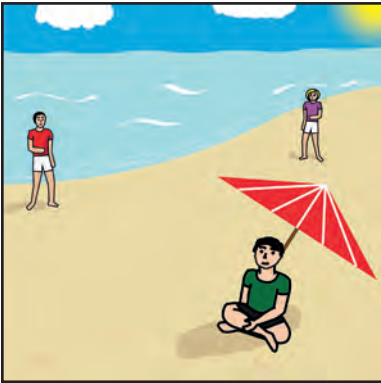
(d) What doesn't he like?
Tick (✓) the correct box. [1]



2. Friends are talking together about different issues.

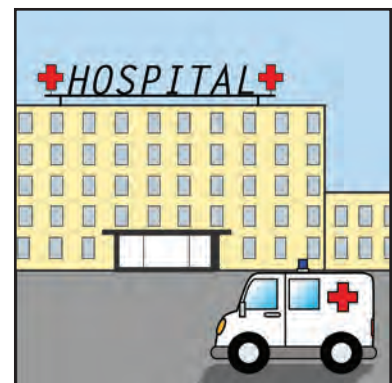
(a) What did they do?

Tick (✓) the correct box. [1]



(b) Where is the grandmother now?

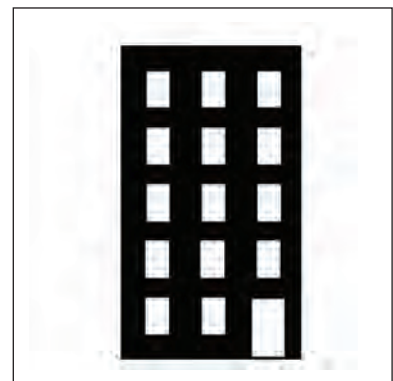
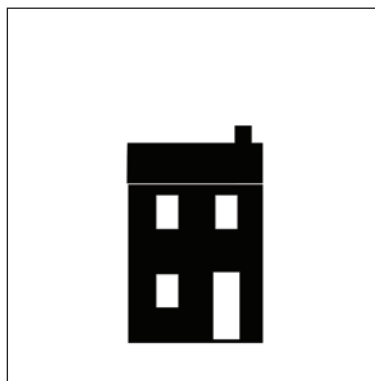
Tick (✓) the correct box. [1]



2(c) What does she find awful?
Tick (✓) the correct box. [1]



(d) Where will the family stay next summer?
Tick (✓) the correct box. [1]



3. Your German friend leaves you a message. Write notes IN ENGLISH.

PART 1

Her father is coming on a _____ .

The father wants his daughter to

_____ .

He hopes they all can _____ .

He is travelling to London by

_____ .

[4]

PART 2

They will spend _____
in Bristol.

She asks _____ .

She suggests they meet on
_____ .

She suggests they _____
together.

[4]

4. Young people are planning for Welsh visitors.
Answer the questions IN ENGLISH.

PART 1

(a) When does the group arrive? [1]

(b) What is suggested? [1]

(c) What is Petra's opinion of the suggestion? [1]

(d) What have they learned from the internet? [1]

PART 2

4(e) What TWO advantages does this tour have? [1]

PART 3

(f) How do they get the information? [1]

(g) What advantage is there for the young people? [1]

(h) How long does the tour last? [1]

5. Friends are talking about their plans for the evening.

Answer the questions IN ENGLISH.

PART 1

(a) Why does the first speaker invite his friends on Saturday? [1]

(b) How does he intend to surprise them? [1]

(c) What will they have? [1]

PART 2

5(d) What is said about most of the friends' eating habits? [1]

(e) What is said to be ONE advantage of cooking for yourself? [1]

PART 3

5(f) What does the first speaker think is stupid after watching a cookery programme? [1]

(g) What must Peter remember? [1]

PART 4

(h) What will they do if it all goes wrong? [1]

6. The friends are talking to Adem who came to Germany from Turkey.

Answer the questions IN ENGLISH.

PART 1

(a) What did Adem fear when he arrived in Germany?
Write ONE detail. [1]

(b) Why did he feel so lonely when he arrived? [1]

(c) What did he decide to do straight away? [1]

(d) How did his parents decide to help him retain his sense of nationality? [1]

PART 2

6(e) How did some Germans react to the Turkish family? [1]

PART 3

(f) What does his mother think is most important? [1]

(g) What does Adem think is vital if foreigners are to integrate? [1]

THIS IS THE END OF THE TEST

END OF PAPER



GCSE

4261/02

GERMAN

UNIT 1: LISTENING

HIGHER TIER

A.M. WEDNESDAY, 8 June 2016

ROUGH NOTES ONLY

ROUGH NOTES

ROUGH NOTES

ROUGH NOTES

ROUGH NOTES

ROUGH NOTES

ROUGH NOTES

ROUGH NOTES

ROUGH NOTES

ROUGH NOTES