



**4261/02**

**GERMAN**

**UNIT 1: LISTENING**

**HIGHER TIER**

**A.M. MONDAY, 19 May 2014**

**45 minutes approximately plus your additional time allowance**

**Surname** \_\_\_\_\_

**Other Names** \_\_\_\_\_

**Centre Number** \_\_\_\_\_

**Candidate Number** 0 \_\_\_\_\_

<b>For Examiner's use only</b>		
<b>Question</b>	<b>Maximum Mark</b>	<b>Mark Awarded</b>
<b>1.</b>	<b>4</b>	
<b>2.</b>	<b>4</b>	
<b>3.</b>	<b>8</b>	
<b>4.</b>	<b>8</b>	
<b>5.</b>	<b>8</b>	
<b>6.</b>	<b>8</b>	
<b>Total Mark</b>	<b>40</b>	

**INSTRUCTIONS TO CANDIDATES**

**Use black ink, black ball-point pen or your usual method.**

**Write your name, centre number and candidate number in the spaces provided on the front cover.**

**Answer ALL the questions. Where numbers are required, figures may be used.**

**You will hear a CD which contains a number of items in German and you will answer questions on each of these IN ENGLISH, unless otherwise instructed.**

**Write your answers in the spaces provided in this question paper.**

**INFORMATION FOR CANDIDATES**

**Dictionaries are not allowed.**

**Before you hear the CD, you will be allowed FIVE MINUTES to read the questions.**

**The CD will be played. After hearing the voices of the German speakers used on the CD, you will hear question 1 as it appears in your answer book. The German item will then follow. At the end of this there will be a pause and the item will then be repeated.**

**All other questions will be heard in the same way.**

**There will be a pause of approximately TWO MINUTES at the end of the test before answer books are collected.**

**You may make notes or write your answers at any time.**

**The number of marks is given in brackets at the end of each question or part-question.**

1. Friends are talking about healthy living.

(a) What does she do to get fit?

Tick (✓) the correct box. [1]



someone  
dancing twice a  
week



someone in a  
fitness centre  
twice a week



someone in a  
fitness centre  
three times a week

(b) How does she keep fit?

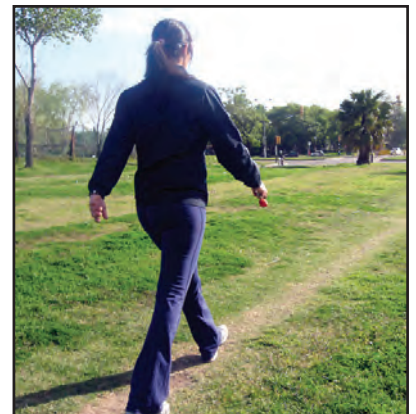
Tick (✓) the correct box. [1]



a leisure centre



someone swimming



someone walking

1(c) What does he find important to do?

Tick (✓) the correct box. [1]



fruit, vegetables  
and a can of cola



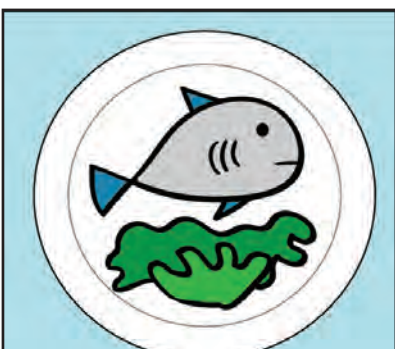
fruit, vegetables and  
a bottle of water



fruit and a bottle  
of water

(d) What else is important?

Tick (✓) the correct box. [1]



a plate of fish and  
lettuce



a cup of coffee and  
a piece of cake



a bowl of porridge  
with fruit

2. Friends are having a chat.

(a) What happens in Wales?

Tick (✓) the correct box. [1]



a plastic bag with  
a cross through  
coins



a cloth bag



a plastic bag  
with coins

(b) What did he do last week?

Tick (✓) the correct box. [1]



a boy and his  
parents washing  
a car



a boy and  
his parents  
gardening



a boy and his  
parents washing  
windows

2(c) What did he do last night?

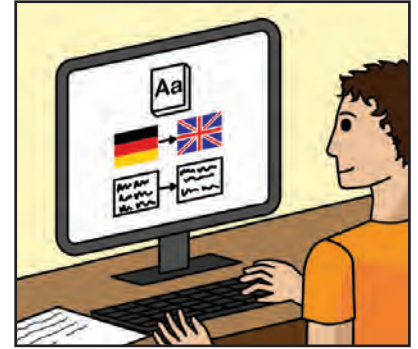
Tick (✓) the correct box. [1]



a boy on a computer talking to a girl on screen



a boy texting someone on his phone



a boy on a computer using a German-English online dictionary

(d) What will they do next week?

Tick (✓) the correct box. [1]



people at a children's birthday party



people at a wedding



people at a barbecue



3. You are on work experience in a tourist office and have an enquiry from a German family about their stay in Wales. Make notes IN ENGLISH.

**PART 1**

The German family arrives in Wales on

\_\_\_\_\_ .

There are \_\_\_\_\_ people in the family.

The son wants to visit \_\_\_\_\_ .

The daughter wants to go to a

\_\_\_\_\_ .

**[4]**

**PART 2**

**They are staying for \_\_\_\_\_ days in Cardiff.**

**They want to stay in a \_\_\_\_\_ hotel.**

**They want to know if it is better to \_\_\_\_\_**

**or \_\_\_\_\_ to North Wales.**

**[4]**

4. Friends are talking about work experience.  
Answer the questions IN ENGLISH.

**PART 1**

(a) What is the first speaker's attitude to work experience? [1]

---

---

(b) Where will the second speaker spend her work experience? [1]

---

---

(c) What would she prefer to do? [1]

---

---

**PART 2**

**(d) Why does the first speaker have a negative view of work experience?**

**Write ONE reason. [1]**

---

---

---

---

**(e) What are the TWO positive things that the second speaker mentions about work experience? [2]**

---

---

---

---

**PART 3**

**(f) How did work experience change Anna's attitude? [1]**

---

---

**(g) Why does the second speaker feel a week in school would be better? [1]**

---

---

5. Young people are talking about healthy living.  
Answer the questions IN ENGLISH.

**PART 1**

- (a) What did the girls do on Saturday evening? Write TWO things. [2]

---

---

---

---

**PART 2**

- (b) What did they eat as a main course? Write TWO things. [2]

---

---

---

---

**PART 3**

**(c) What does Peter think of pizza? Write ONE thing. [1]**

---

---

**(d) What does the last speaker suggest about fast food? [1]**

---

---

**PART 4**

**(e) Why is young people's lifestyle said to be unhealthy? Write ONE reason. [1]**

---

---

**(f) How does school try to help? Write ONE thing. [1]**

---

---

6. Young people are talking about the environment.  
Answer the questions IN ENGLISH.

**PART 1**

- (a) What is the first speaker's opinion about the environment? [1]

---

---

- (b) What TWO environmental problems does the second speaker mention? [2]

---

---

---

---



**PART 2**

**(c) How is the town trying to reduce car use? [1]**

---

---

**(d) What TWO things does the speaker suggest can be done at home to help the environment? [2]**

---

---

---

---

**PART 3**

- (e) **What could the young people do in school? Write ONE detail. [1]**

---

---

- (f) **Why does the speaker suggest doing something practical? Write ONE suggestion. [1]**

---

---

**THIS IS THE END OF THE TEST**

**END OF PAPER**