

OXFORD CAMBRIDGE AND RSA EXAMINATIONS
GCSE

A711/01

GERMAN

Listening (Foundation Tier)

MONDAY 19 MAY 2014: Morning

**Duration: 5 minutes reading time
+ 30 minutes (approx.)
plus your additional time allowance**

MODIFIED ENLARGED

Candidate forename		Candidate surname	
-------------------------------	--	------------------------------	--

Centre number						Candidate number				
--------------------------	--	--	--	--	--	-----------------------------	--	--	--	--

Candidates answer on the Question Paper.

OCR SUPPLIED MATERIALS:

CD

OTHER MATERIALS REQUIRED:

None

READ INSTRUCTIONS OVERLEAF

You will now have finished the five minutes' reading time for this paper. The test will begin now.

INSTRUCTIONS TO CANDIDATES

During this introduction you should tell the invigilator immediately if you have any difficulty in hearing the recording. Once the questions have begun, the recording will not be stopped.

Write your name, centre number and candidate number in the boxes on the first page. Please write clearly and in capital letters.

Use black ink.

Answer ALL the questions.

Read each question carefully. Make sure you know what you have to do before starting your answer.

Write your answer to each question in the space provided. Additional paper may be used if necessary but you must clearly show your candidate number, centre number and question number(s).

INFORMATION FOR CANDIDATES

The number of marks is given in brackets [] at the end of each question or part question.

The total number of marks for this paper is 40.

Listen carefully to the instructions and follow the example for each exercise.

There will be pauses to give you time to read the questions and to write your answers.

You will hear all the recordings twice.

You may write your answers at any time during the test.

You do not have to write in full sentences and your answers will not be marked for the accuracy of the language.

Dictionaries are NOT allowed.

Open your booklet now.

Any blank pages are indicated.

EXERCISE 1: Questions 1 – 8

Kevin's birthday and his plans

Read the questions and look at the pictures.

You will hear each question twice. Tick the correct box.

Example:

When is Kevin's birthday?

THURSDAY	A	<input checked="" type="checkbox"/>
----------	---	-------------------------------------

FRIDAY	B	<input type="checkbox"/>
--------	---	--------------------------

SATURDAY	C	<input type="checkbox"/>
----------	---	--------------------------

The correct answer is A.

Now answer the eight questions. Tick ONE box for each.

1 How old will Kevin be this year?

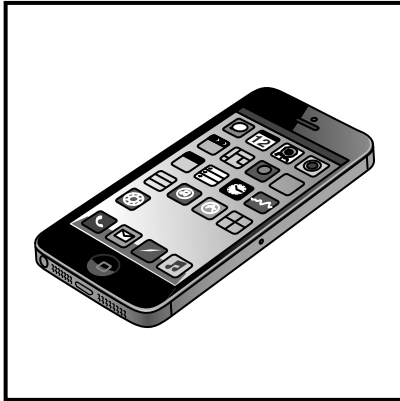
15	A	<input type="checkbox"/>
----	---	--------------------------

16	B	<input type="checkbox"/>
----	---	--------------------------

17	C	<input type="checkbox"/>
----	---	--------------------------

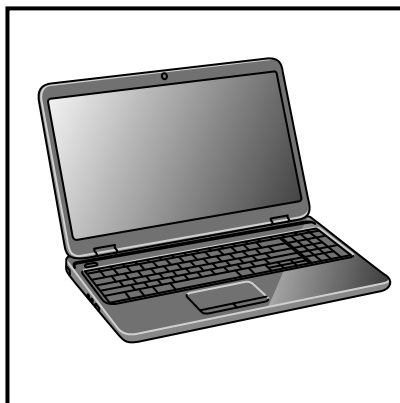
[1]

2 What is he getting for his birthday?



A

phone



B

computer

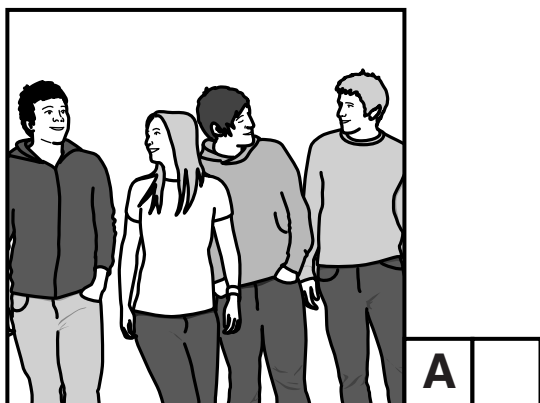


C

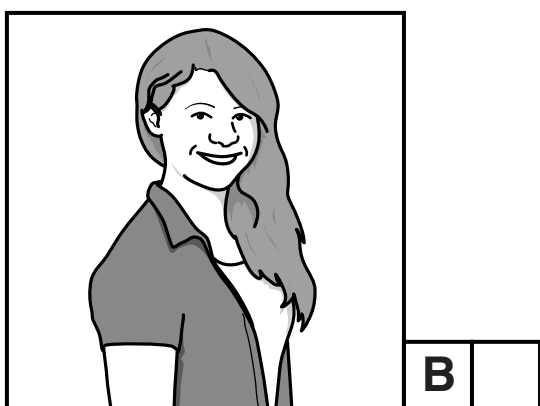
shirt

[1]

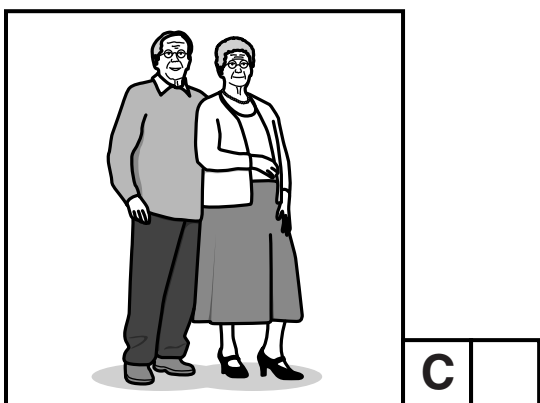
3 Who is coming on Thursday evening?



friends



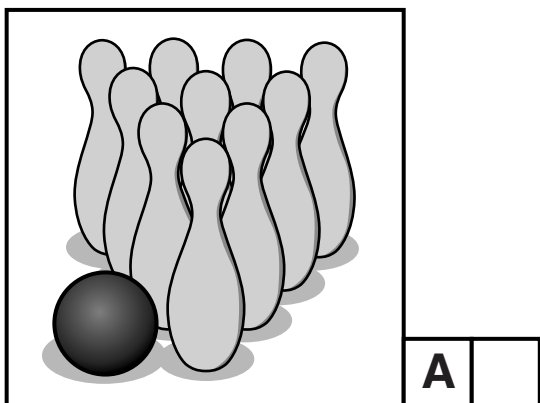
friend



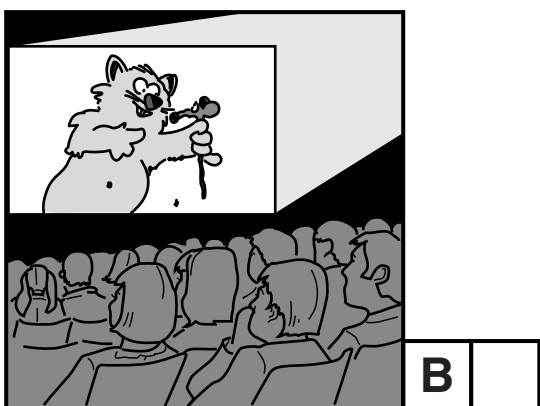
grandparents

[1]

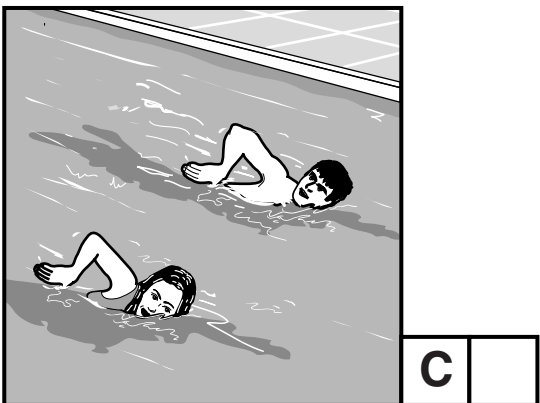
4 Where are they going on Thursday evening?



bowling



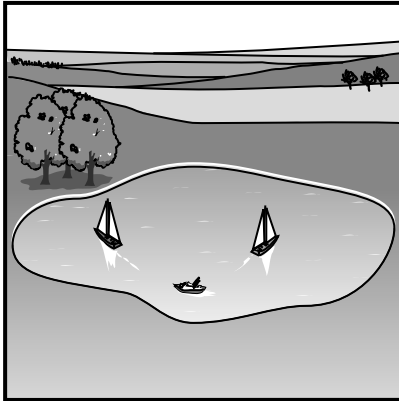
cinema



swimming

[1]

5 Where are they going afterwards?



A

lake



B

restaurant

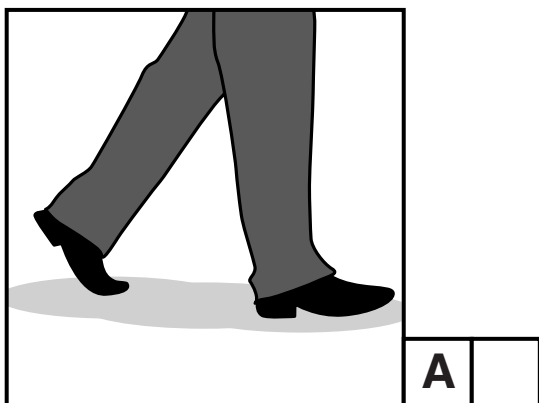


C

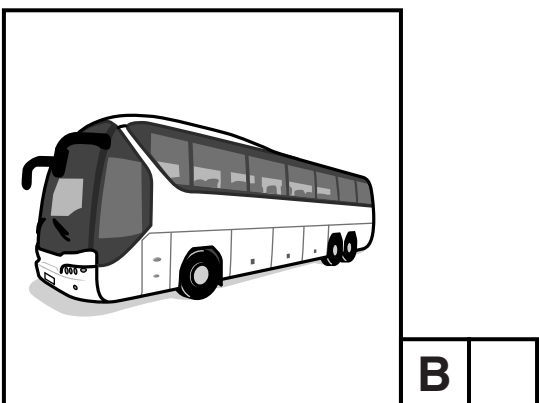
party

[1]

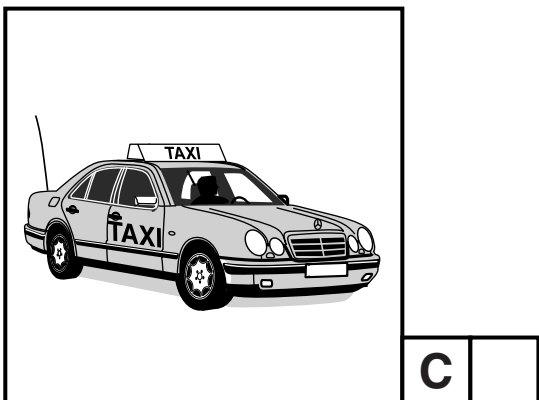
6 How are they getting home?



walk



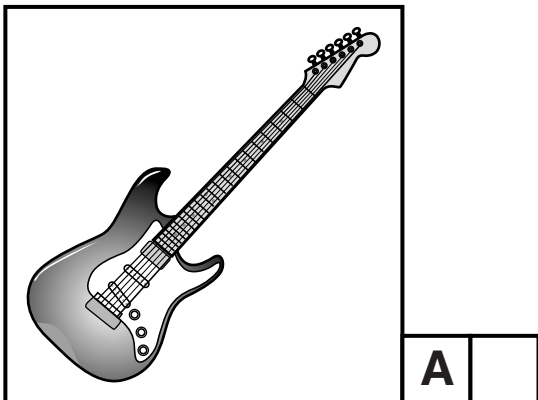
bus



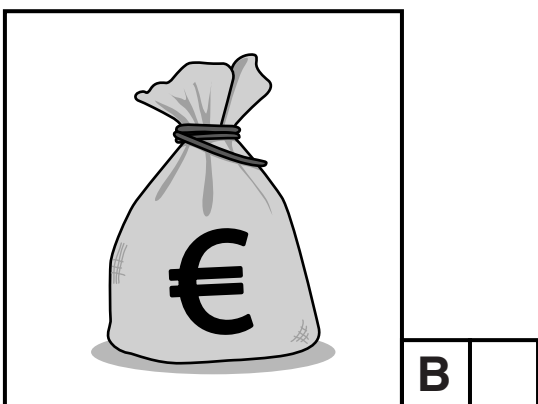
taxi

[1]

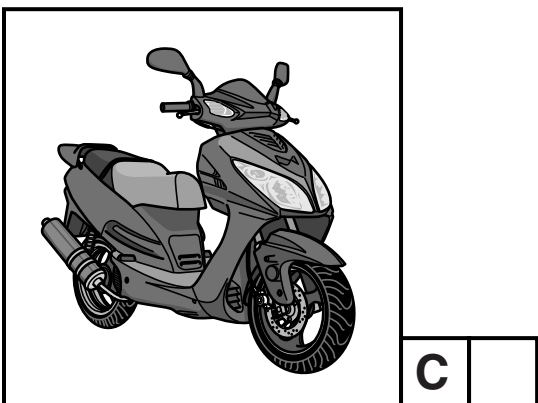
7 What does Kevin plan to do this year?



guitar



money



motorbike

[1]

8 Where does Kevin plan to visit this year?

USA	
A	

FRANCE	
B	

SPAIN	
C	

[1]

[TOTAL: 8 MARKS]

EXERCISE 2: Questions 9 – 16

Maja talks about holidays and the environment

Read the questions.

Listen to Maja's statements and circle the correct answer.

Example:

Maja goes away on holiday

most years

every year

every two years

You will now hear the whole recording once and then it will be repeated.

9 Maja always travels with her

sister

friends

family

[1]

- 10 Maja travels by**
car and plane
bus and plane
train and plane [1]
- 11 Maja always arrives at her destination**
late in the evening
late in the afternoon
later than planned [1]
- 12 Maja finds the holiday home very**
comfortable
hot
dirty [1]
- 13 The holiday home's heating system is powered by**
the wind
the sun
oil [1]

14 Maja thinks walking is

good fun

hard work

healthy

[1]

15 Maja likes the sea water because it is so

blue

clear

cool

[1]

16 Maja recycles

newspapers

bottles

food waste

[1]

[TOTAL: 8 MARKS]

EXERCISE 3: Questions 17 – 24

Anja and Rolf are chatting

Read the statements and the words in the box below.

2.30	delightful	school
5.30	doctors	sixteenth
actors	geography	strict
badminton	grandmother's	tennis
boring	history	tennis club
crime	long-running	unfriendly

Listen and complete each statement with a word FROM THE BOX.

Example:

Rolf invites Anja to play tennis .

17 They agree to play at _____ . [1]

18 They will meet at the _____ . [1]

[PAUSE]

19 The new teacher's subject is _____ . [1]

20 Rolf finds the new teacher _____ . [1]

[PAUSE]

21 Anja and Rolf are discussing a _____ programme. [1]

**22 They both like the story and the
_____ . [1]**

[PAUSE]

**23 The birthday Rolf is celebrating at the weekend is his
_____ . [1]**

24 He finds his grandfather _____ . [1]

[TOTAL: 8 MARKS]

EXERCISE 4: Questions 25 – 32

Frau Grimm gets information about Magdeburg

Read the questions.

Listen and answer the questions briefly IN ENGLISH.

Example:

How long has Frau Grimm lived in Magdeburg?

Answer: *Three* days

25 What is Frau Grimm's first question?

_____ [1]

26 What advice is she given?

_____ [1]

[PAUSE]

27 Where exactly are the car parks?

_____ [1]

28 When is parking free elsewhere?

_____ [1]

[PAUSE]

29 What is the first thing the man suggests Frau Grimm should visit?

_____ [1]

30 What often happens there at the weekend?

_____ [1]

[PAUSE]

31 What colour is the modern cultural centre?

_____ [1]

32 How can Frau Grimm choose where to do sport in Magdeburg?

_____ [1]

[TOTAL: 8 MARKS]

EXERCISE 5: Questions 33 – 40

Kismet and Sylvia are discussing what they do when they are not at school

Read the questions.

Listen and tick the correct box.

Example:

On Saturdays

A they both do the same thing.

☒

B each one plays a different sport.

☐

C neither of them leaves the house.

☐

33 On Sundays Sylvia _____ goes for a walk with the family.

A usually

☐

B sometimes

☐

C always

☐

[1]

34 If it rains they look for somewhere

A to stay overnight.

☐

B to get a hot drink.

☐

C to eat something.

☐

[1]

[PAUSE]

35 On Sundays Kismet

A does his German homework.

☐

B works on improving his science.

☐

C does extra background reading.

☐

[1]

36 Sylvia feels

A guilty about her work.

☐

B sorry for Kismet.

☐

C worried about her marks.

☐

[1]

[PAUSE]

37 Kismet

A never listens to music.

☐

B is a singer-songwriter.

☐

C admires Sylvia's musical skill.

☐

[1]

38 Sylvia

A loves playing the piano.

☐

B can't be bothered to practise.

☐

C plays the piano with her father.

☐

[1]

[PAUSE]

39 Kismet finds football on TV

A boring.

☐

B amusing.

☐

C great.

☐

[1]

40 Sylvia prefers

A sports.

☐

B reality shows.

☐

C soaps.

☐

[1]

[TOTAL: 8 MARKS]

END OF QUESTION PAPER



Copyright Information

OCR is committed to seeking permission to reproduce all third-party content that it uses in its assessment materials. OCR has attempted to identify and contact all copyright holders whose work is used in this paper. To avoid the issue of disclosure of answer-related information to candidates, all copyright acknowledgements are reproduced in the OCR Copyright Acknowledgements Booklet. This is produced for each series of examinations and is freely available to download from our public website (www.ocr.org.uk) after the live examination series.

If OCR has unwittingly failed to correctly acknowledge or clear any third-party content in this assessment material, OCR will be happy to correct its mistake at the earliest possible opportunity.

For queries or further information please contact the Copyright Team, First Floor, 9 Hills Road, Cambridge CB2 1GE.

OCR is part of the Cambridge Assessment Group; Cambridge Assessment is the brand name of University of Cambridge Local Examinations Syndicate (UCLES), which is itself a department of the University of Cambridge.

