

Surname	Centre Number	Candidate Number
Other Names		0



GCSE

4242/04

**GEOGRAPHY
(Specification B)
HIGHER TIER
UNIT 2
SECTION B**

A.M. THURSDAY, 22 May 2014

1 hour 30 minutes

Suitable for Modified Language Candidates

This paper is to be given out after Section A has been collected in.

ADDITIONAL MATERIALS

Resource folder.

For Examiner's use only		
Part	Maximum Mark	Mark Awarded
A	23	
B	23	
C	14	
SPaG	4	
Total	64	

INSTRUCTIONS TO CANDIDATES

Use black ink or black ball-point pen.

Write your name, centre number and candidate number in the spaces at the top of this page.

Answer **all parts of this question**.

Write your answers in the spaces provided in this booklet.

If additional space is required you should use the lined pages at the end of this booklet. The question number(s) should be clearly shown.

INFORMATION FOR CANDIDATES

The number of marks is given in brackets [] at the end of each question or part-question.

You are reminded that assessment will take into account the quality of written communication used in your answer that involves extended writing (**Part C**).

In addition, your ability to spell, punctuate and use grammar accurately will be assessed in your answer to **Part C**.

The Peak District National Park is a beautiful rural area and is very popular with both commuters and tourists.

This paper asks you to decide whether limestone quarrying should be allowed to continue in the Peak District National Park when present quarrying permissions run out.

	Marks
Part A: introduces the Peak District National Park.	23
Part B: explores the impacts of commuting and quarrying on the Peak District National Park.	23
Part C: asks you to decide whether limestone quarrying should be allowed to continue in the Peak District National Park when present quarrying permissions run out.	18
Total marks	64

Part A

You are advised to spend about 30 minutes on this part.

Part A *Introduces the Peak District National Park.*

(a) Study the map on **page 2** of the separate **Resource Folder**.

(i) Describe the location of the Peak District National Park. [3]

.....

.....

.....

.....

.....

(ii) Suggest how changes in technology have contributed to an increase in commuters living in rural areas like the Peak District National Park, in recent years. [2]

.....

.....

.....

.....

(iii) The Peak District National Park is ideally located to attract day visitors. Use **two** pieces of map evidence to support this statement. [4]

.....

.....

.....

.....

.....

.....

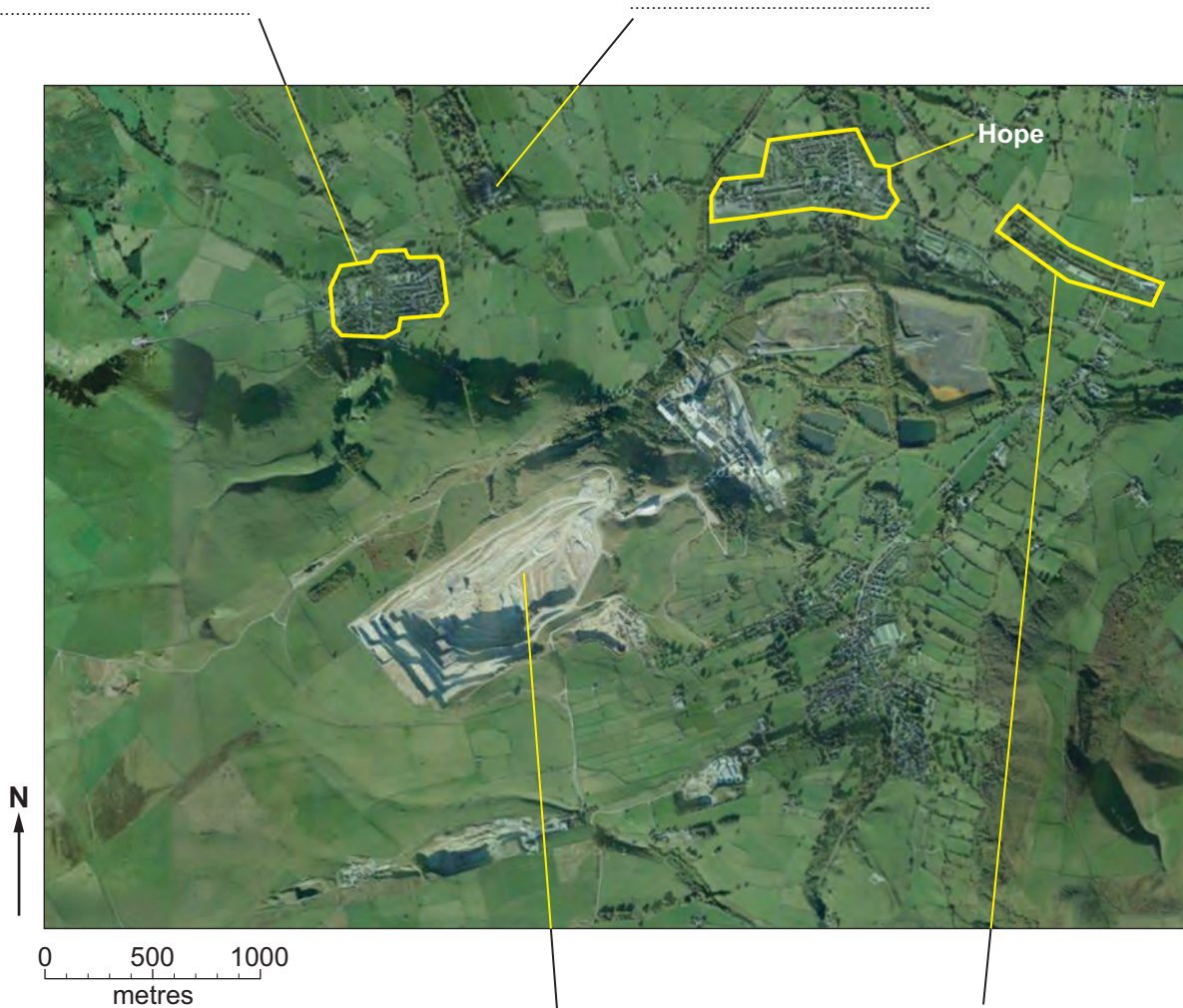
.....

.....

(b) Study the OS extract on **page 4** of the separate **Resource Folder**. It shows the village of Castleton and Hope Quarry. This is one of the biggest quarries in the Peak District National Park.

(i) Give the six figure grid reference for the point **Q** on the map. [1]

(ii) Use the OS extract to complete the labels on the photograph below. [4]



- (iii) Suggest **two** reasons why the Peak District National Park is a popular tourist area. Support your answer with evidence from the OS map and photograph. [4]

.....

.....

.....

.....

.....

.....

.....

- (c) Study the employment information on **page 6** of the separate **Resource Folder**.

- (i) What percentage of employment is in quarrying? [1]

.....

- (ii) Changes in employment structure in the Peak District National Park are similar to those across the UK as a whole. Explain why employment structure in the UK is changing. [4]

.....

.....

.....

.....

.....

.....

.....

.....

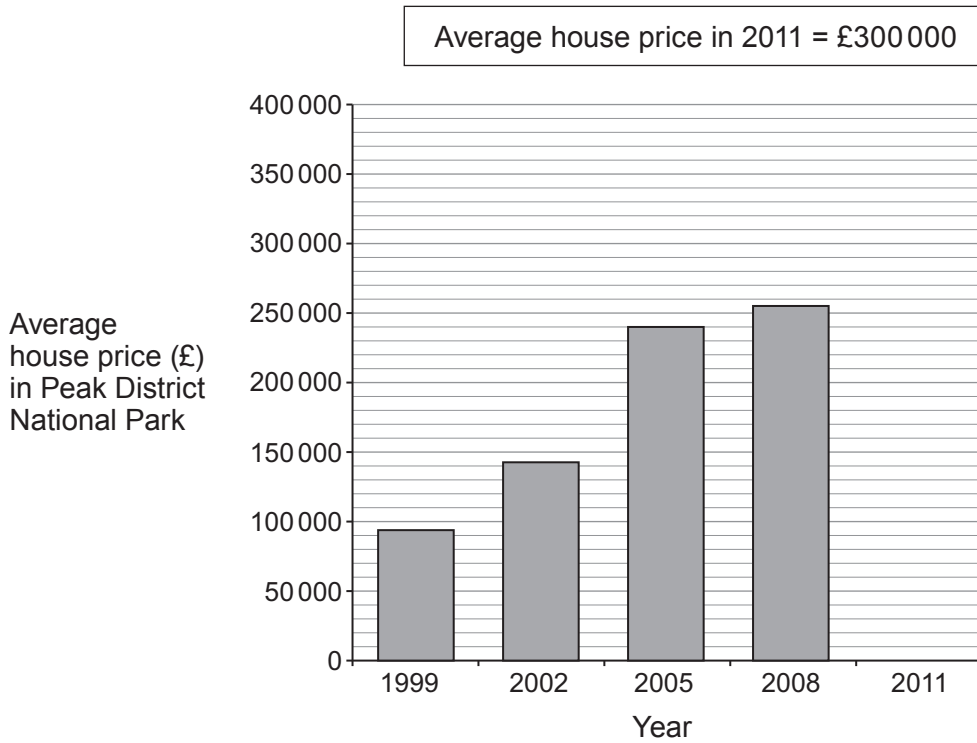
End of Part A

Part B

You are advised to spend about 30 minutes on this part.

Part B explores the impacts of commuting and quarrying on the Peak District National Park.

- (a) (i) Complete the graph below to show the average house price in the Peak District National Park for 2011. Use the data in the box below. [1]



- (ii) Describe the possible **negative** effects of the change in house prices in the Peak District National Park on local people. [4]

.....

.....

.....

.....

.....

.....

.....

(iii) Around half of the adults who live in the Peak District National Park travel to work outside of the National Park.

Describe the possible **benefits** that commuters could bring to village life in the National Park. [4]

.....
.....
.....
.....
.....
.....
.....

(b) Study **page 7** of the separate **Resource Folder**.

Explain how **two** of the following groups of people could benefit from production of limestone. [4]

householder

farmer

car owner

builder

.....
.....
.....
.....
.....
.....

(c) Quarrying leaves large holes in the ground. Blasting the limestone and carrying it away from the area may cause villages and roadsides to be covered in a layer of grey dust. Study the table on **page 8** of the separate **Resource Folder**.

(i) Choose **two** of the businesses. Explain why each one may suffer as a result of quarrying. [4]

Business 1:

.....
.....
.....
.....

Business 2:

.....
.....
.....
.....

(ii) Study the photographs on **page 9** of the separate **Resource Folder**. Explain why changing the use of a disused quarry may have both positive and negative effects on local people. Use evidence from the OS map extract in your answer. [6]

.....
.....
.....
.....
.....
.....
.....
.....
.....
.....
.....
.....
.....
.....
.....
.....

End of Part B

Part C

*You are advised to spend **about 30 minutes** on this part.*

Part C asks you to decide whether limestone quarrying should be allowed to continue in the Peak District National Park when present permissions run out.

Use the **Viewpoints and fact file** on **page 10** of the separate **Resource Folder** to help you complete the following matrix and organise your ideas. You are advised to comment on the sustainability of your decision.

The matrix on page 10 of this booklet is there to help you plan your answer. If you choose to complete it you should only spend **about 10 minutes** on it.

Social, economic and environmental impacts of quarrying

Impacts	Advantages and disadvantages	Sustainability
<p>Allow quarrying to continue</p>		
<p>Do not allow quarrying to continue</p>		

BLANK PAGE