

Surname	Centre Number	Candidate Number
Other Names		0



GCSE

4242/02

**GEOGRAPHY
(Specification B)
FOUNDATION TIER
UNIT 2
SECTION B**

A.M. THURSDAY, 22 May 2014

1 hour 30 minutes

Suitable for Modified Language Candidates

This paper is to be given out after Section A has been collected in.

ADDITIONAL MATERIALS

Resource folder.

INSTRUCTIONS TO CANDIDATES

Use black ink or black ball-point pen.

Write your name, centre number and candidate number in the spaces at the top of this page.

Answer **all parts of this question**.

Write your answers in the spaces provided in this booklet.

If additional space is required you should use the lined pages at the end of this booklet. The question number(s) should be clearly shown.

INFORMATION FOR CANDIDATES

The number of marks is given in brackets [] at the end of each question or part-question.

You are reminded that assessment will take into account the quality of written communication used in your answer that involves extended writing (**Part C**).

In addition, your ability to spell, punctuate and use grammar accurately will be assessed in your answer to **Part C**.

For Examiner's use only		
Part	Maximum Mark	Mark Awarded
A	29	
B	20	
C	11	
SPaG	4	
Total	64	

The Peak District National Park is a beautiful rural area and is very popular with visitors.

This paper asks you to decide whether limestone quarrying should be allowed to continue in the Peak District National Park when present quarrying permissions run out.

	Marks
Part A: explores tourism and quarrying within the Peak District National Park.	29
Part B: asks you to consider some of the advantages and disadvantages of limestone quarrying.	20
Part C: asks you to decide whether limestone quarrying should be allowed to continue in the Peak District National Park when present permissions run out.	15
Total marks	64

Part A

You are advised to spend about 35 minutes on this part.

In this part you will explore tourism and quarrying within the Peak District National Park.

(a) Study the map on **page 2** of the separate **Resource Folder**.

(i) Circle the **three** correct answers in the following passage. [3]

The southern tip of the Peak District National Park is about **150 / 200 / 250** kilometres **north-west / south-east / north-east** of the city of London.

It is surrounded by the M1, M62 and **M4 / M5 / M6** motorways.

(ii) The Peak District National Park is a popular visitor area. One reason is because it is close to many motorways. Suggest why this may increase visitor numbers. [1]

.....

.....

- (iii) Give **one other** piece of map evidence that may help to explain why the Peak District National Park has a large numbers of visitors. Explain why it may help. [3]

Evidence:

Explanation:

.....

.....

- (iv) State what effect each of the following changes may have on visitor numbers to rural areas like the Peak District National Park. Choose from: [3]

increase **decrease** **stay the same**

You may use the same answer more than once.

Change	Effect on visitor numbers
increased car ownership	
rising price of petrol	
increased leisure time	

- (b) Study the information on **page 3** of the separate **Resource Folder**.

- (i) Use this information to complete the passage below. [3]

The largest single employer of people in the Peak District National Park in 2005 was with 24% of the total jobs. Quarrying provided the same percentage of jobs as agriculture, each having % of the total. In the past 10 years the number of workers in tourism has

- (ii) Choose **one** of the industries where numbers of jobs have fallen (decreased). Suggest why numbers working in it have fallen. [3]

.....

.....

.....

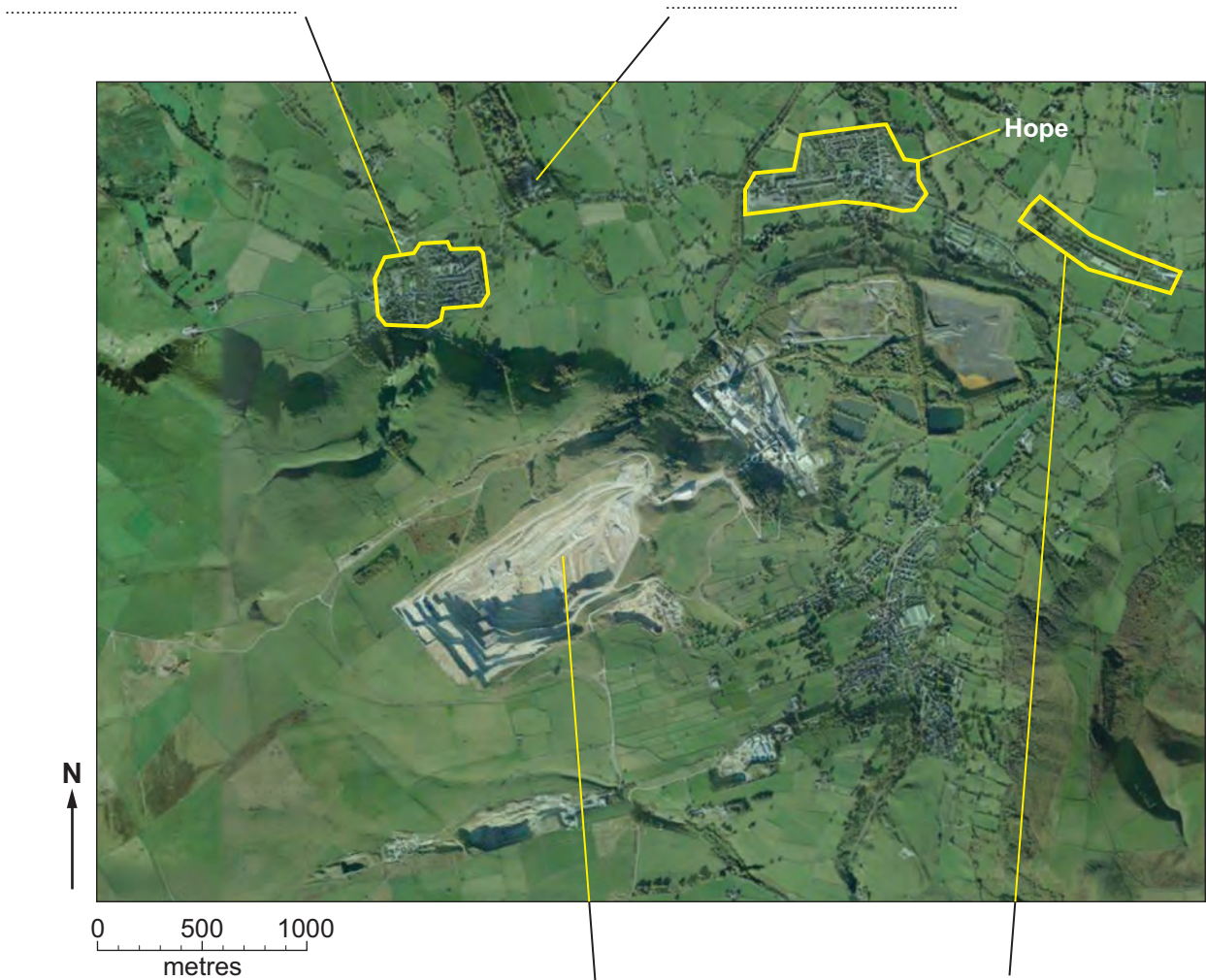
.....

(c) Study the OS map extract on **page 4** of the separate **Resource Folder**. It shows the location of a large quarry in the Peak District National Park.

(i) Give a four figure grid reference for the square marked **Q** on the map. [1]

.....

(ii) Use information from the map extract to complete the labels on the photograph below. [4]



.....

.....

(iii) Give **two** pieces of **map evidence** that the village of Castleton is a popular visitor attraction. [2]

1.

2.

- (iv) Name **one** group of people living in Castleton who may benefit from large visitor numbers. Describe how they may benefit. [3]

Group of people:

How they may benefit:

.....

.....

.....

- (v) Suggest how being near a large working quarry may affect visitor numbers to a village like Castleton. Explain your answer. [3]

.....

.....

.....

.....

.....

End of Part A

29

4242
02/0005

Part B

You are advised to spend about 25 minutes on this part.

In this part you will consider some of the advantages and disadvantages of limestone quarrying.

(a) Study the diagram on **page 6** of the separate **Resource Folder**.

(i) What type of industry is limestone quarrying? Circle the correct answer. [1]

Primary

Secondary

Tertiary

(ii) Explain **one** way, shown in the diagram, in which limestone might benefit other industries. [2]

.....

.....

.....

.....

(iii) Explain **one** way, shown in the diagram, in which limestone might benefit people in their homes. [2]

.....

.....

.....

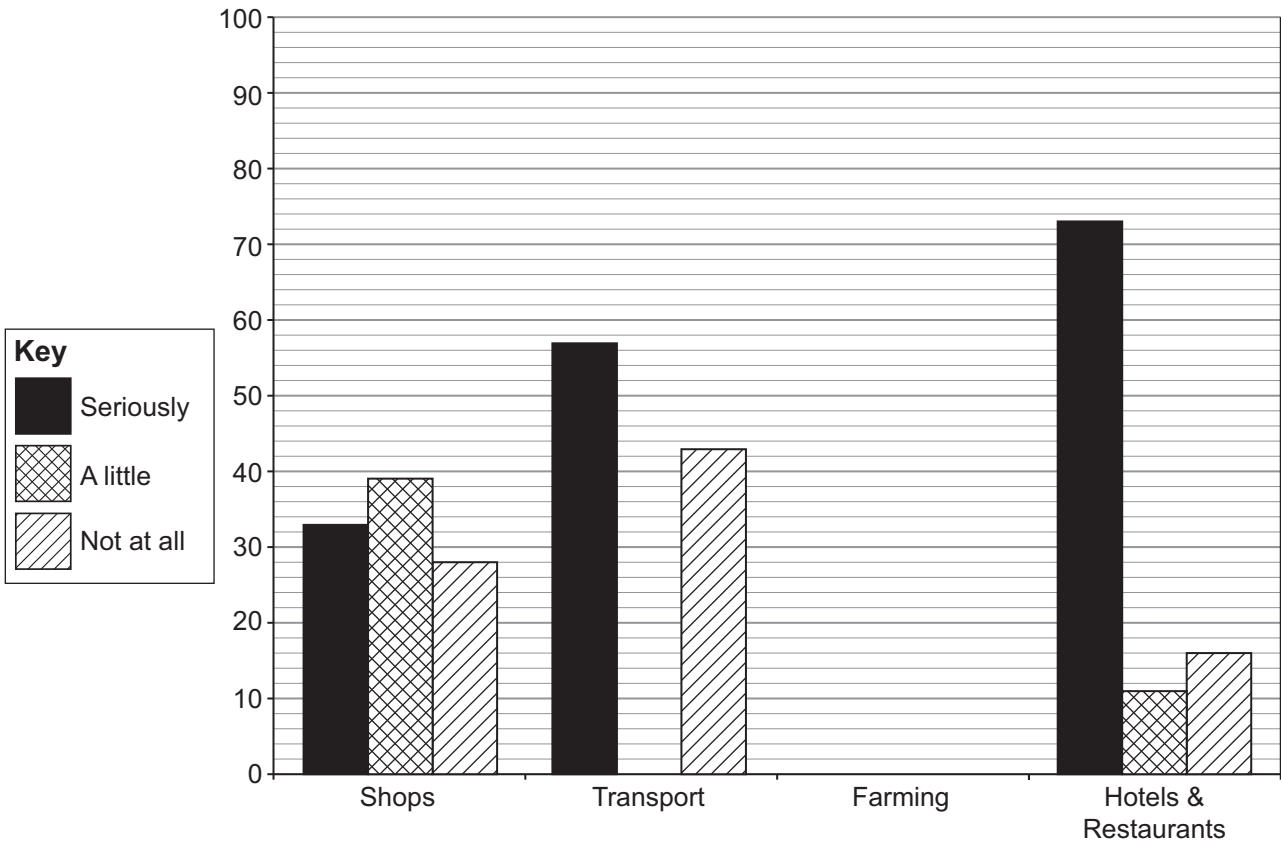
.....

- (b) Quarrying leaves large holes in the ground. Blasting the limestone and carrying it away from the area may cause villages and roadsides to be covered in a layer of grey dust.

Working in a damaged landscape can badly affect other businesses. The graph below shows how much some Peak District industries are affected by quarrying.

- (i) Complete the graph using the following figures: [2]

Business affected	Seriously	A little	Not at all
Farming	66	18	16



- (ii) Which business is the most seriously affected by quarrying? Suggest **two** effects that quarrying may have on this business. [5]

The most seriously affected business is

First effect

Second effect

(c) Study the photographs on **page 7** of the separate **Resource Folder**.

(i) Choose **one** of the uses of a disused quarry that is likely to **benefit** residents of a local village. Circle your choice. [4]

A **B** **C** **D**

Explain **two** ways it will be a benefit

Way one:

.....

.....

.....

Way two:

.....

.....

.....

(ii) Choose **one** of the uses of a disused quarry that is likely to be a **nuisance** to residents of a local village. Circle your choice. [4]

A **B** **C** **D**

Explain why it could be a nuisance:

.....

.....

.....

.....

.....

.....

.....

End of Part B

Part C

*You are advised to spend **about 30 minutes** on this part.*

In this part you will advise the Peak District National Park planners as to whether or not limestone quarrying should continue in the National Park when present quarrying permissions run out.

Use the **points of view** on **page 8** of the separate **Resource Folder** to organise your ideas on the following matrix. One line of the matrix has been completed for you.

You should spend **about 10 minutes** completing the matrix.

Use the information in your matrix on page 10 to write a letter to the Peak District National Park planners. You may also use information from other parts of this paper and ideas of your own.

You should explain why you have chosen this option in terms of its **social, economic and environmental** effects.

Marks for spelling, punctuation and the accurate use of grammar are allocated to this question.

[11+4]

11	4

To the Peak District National Park planners

I am writing to advise you to:

Tick (✓)	
	allow limestone quarrying to continue
	stop limestone quarrying continuing

I have chosen this option because

.....

.....

.....

.....

.....

.....

.....

.....

.....

.....

.....

.....

.....

.....

.....

.....

.....

.....

.....

.....

.....

Examiner
only

End of Part C

END OF PAPER

BLANK PAGE