

**General Certificate of Secondary Education**  
**Geography B**  
**Unit B563: Key Geographical themes**  
**Resource Booklet**

**B563**

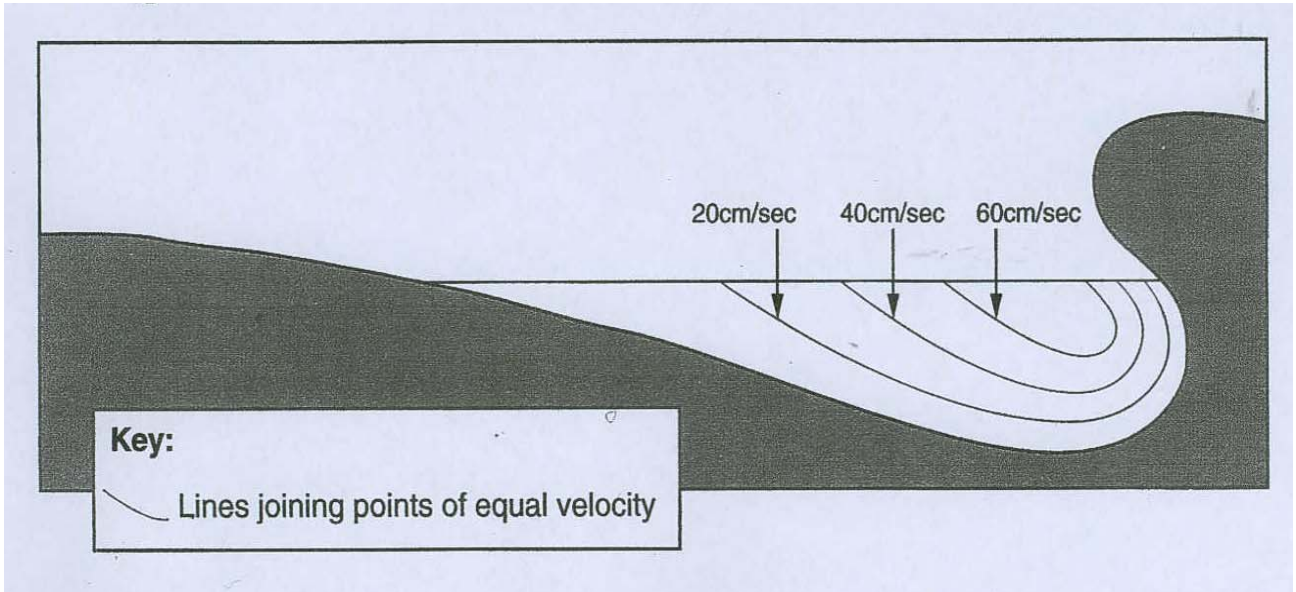
## INFORMATION FOR CANDIDATES

- The following abbreviations may be used:
- MEDC – More Economically Developed Country
- LEDC – Less Economically Developed Country
- EU – European Union which includes the United Kingdom

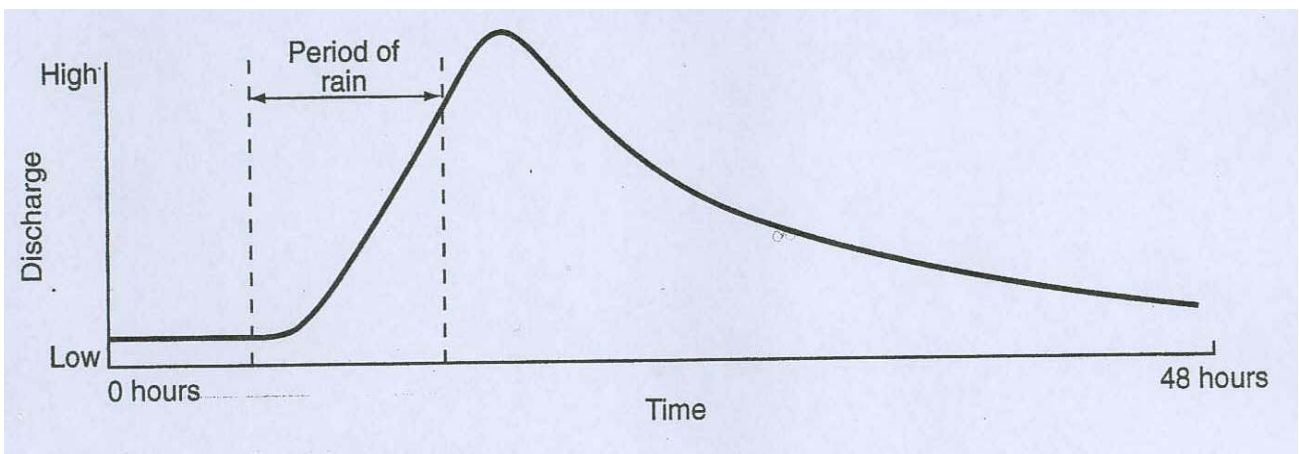
## CONTENTS OF THE RESOURCE BOOKLET

- Fig 1 – Cross section of the river at 829930
- Fig 2 – Storm hydrograph of Bannock Burn at 754902
- Fig 3 – A map of Lulworth Cove
- Fig 4 – Sketch map of coastal landforms near Lulworth Cove
- Fig 5 – A cyclone is a type of tropical storm – cyclone seasons in Bangladesh
- Fig 6 – A satellite image of a tropical storm in Asia
- Fig 7 – A Tropical storm education poster
- Fig 8 – Major Earthquakes of the San Andreas Fault, California, U.S.A.
- Fig 9 – Survivors of the Northridge earthquake, California, U.S.A
- Fig 10 – Sites of BMW factories
- Fig 11 – The Brandt line

This document consists of **10** printed pages.

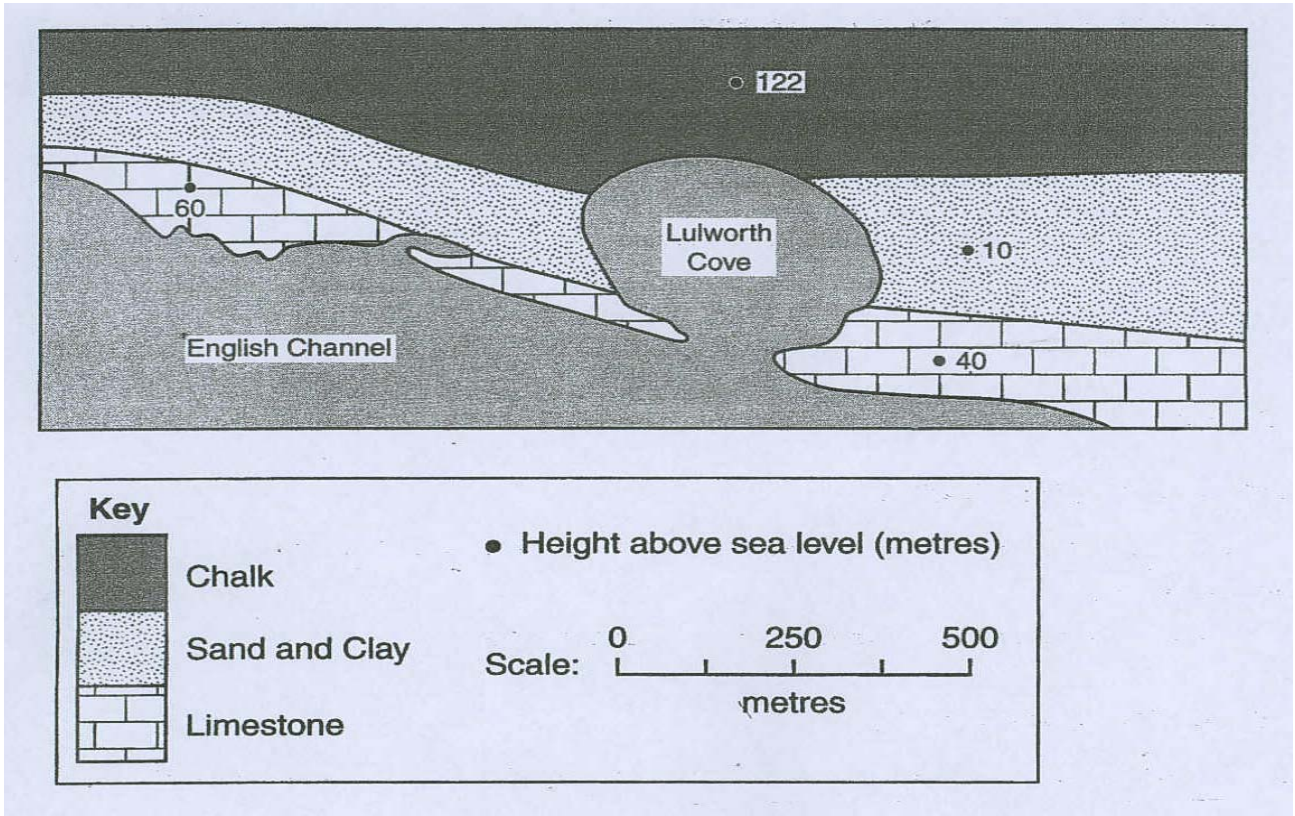
**Fig. 1 Cross section of the river at 829930**

© OCR 2008

**Fig. 2 Storm hydrograph of Bannock Burn at 745902**

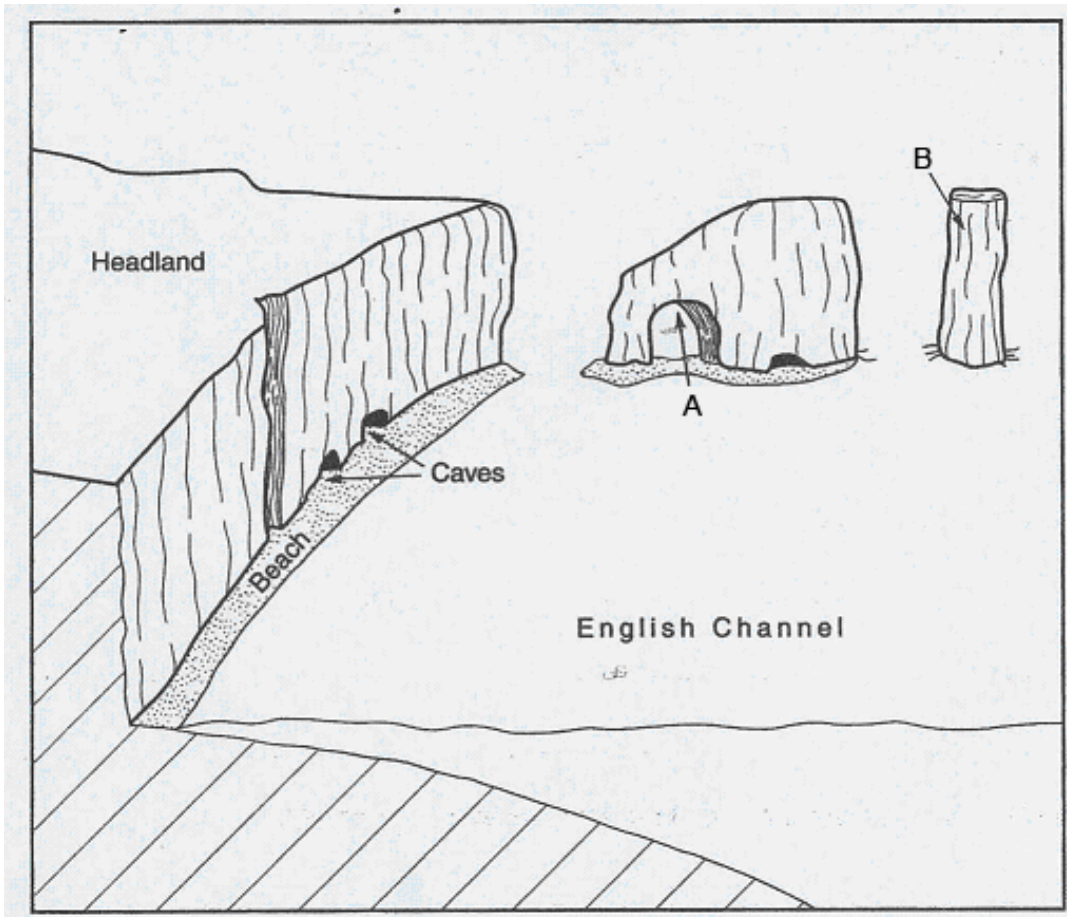
© OCR 2008

Fig. 3 A map of Lulworth Cove



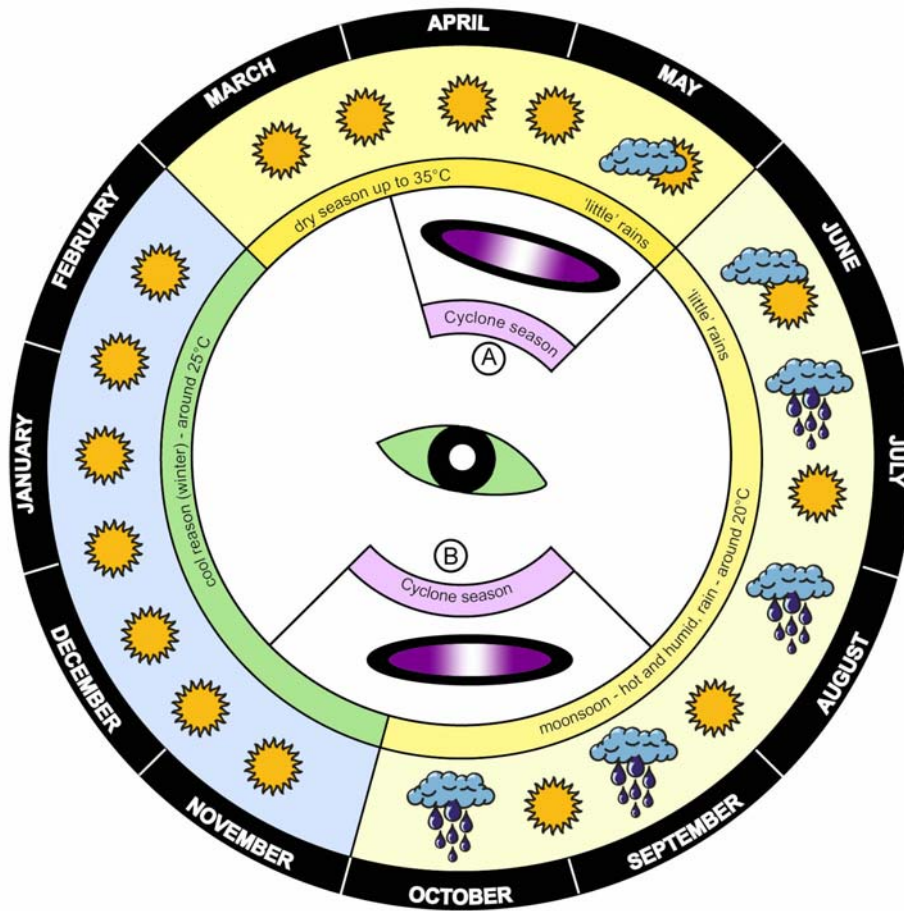
© OCR 2008

Fig. 4 Sketch map of coastal landforms near Lulworth Cove



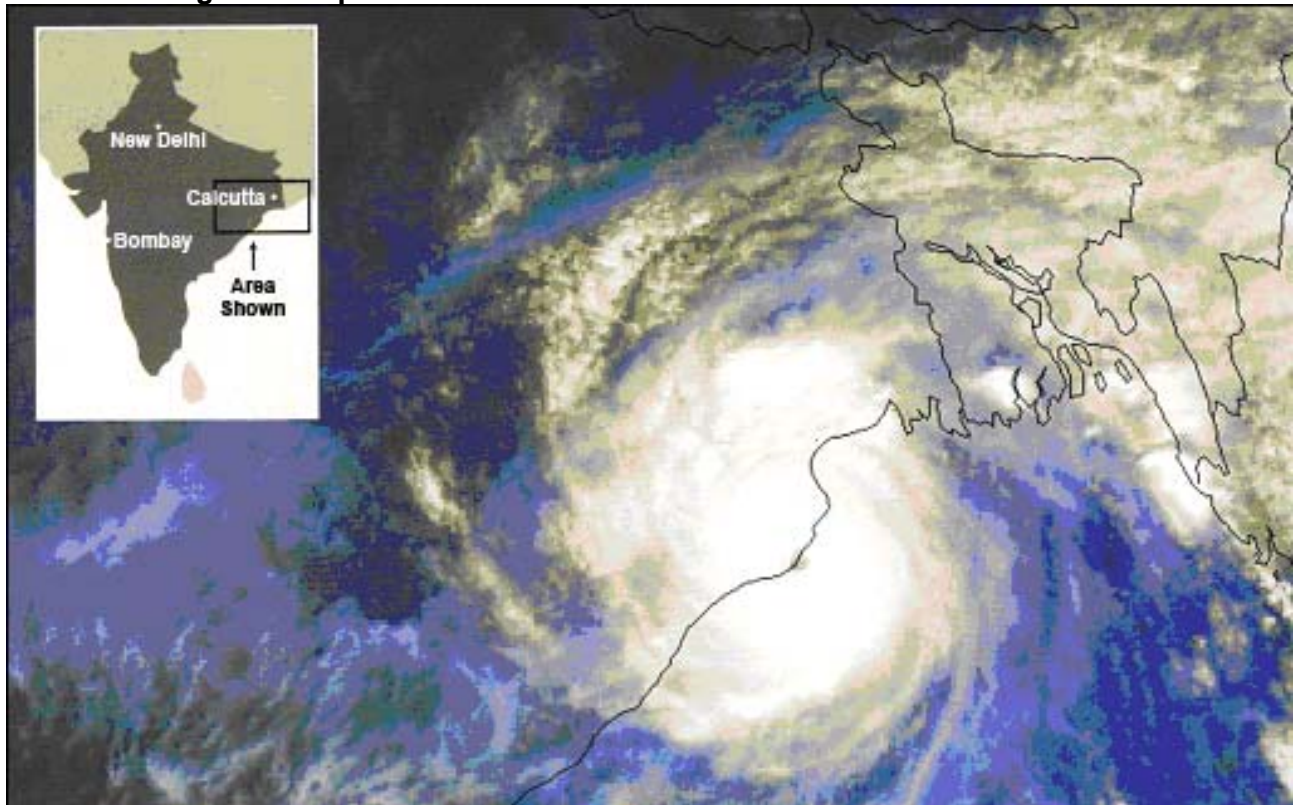
© OCR 2008

Fig. 5 Tropical storm seasons in Bangladesh



© OCR 2008

Fig. 6 A satellite image of a tropical storm in Asia.



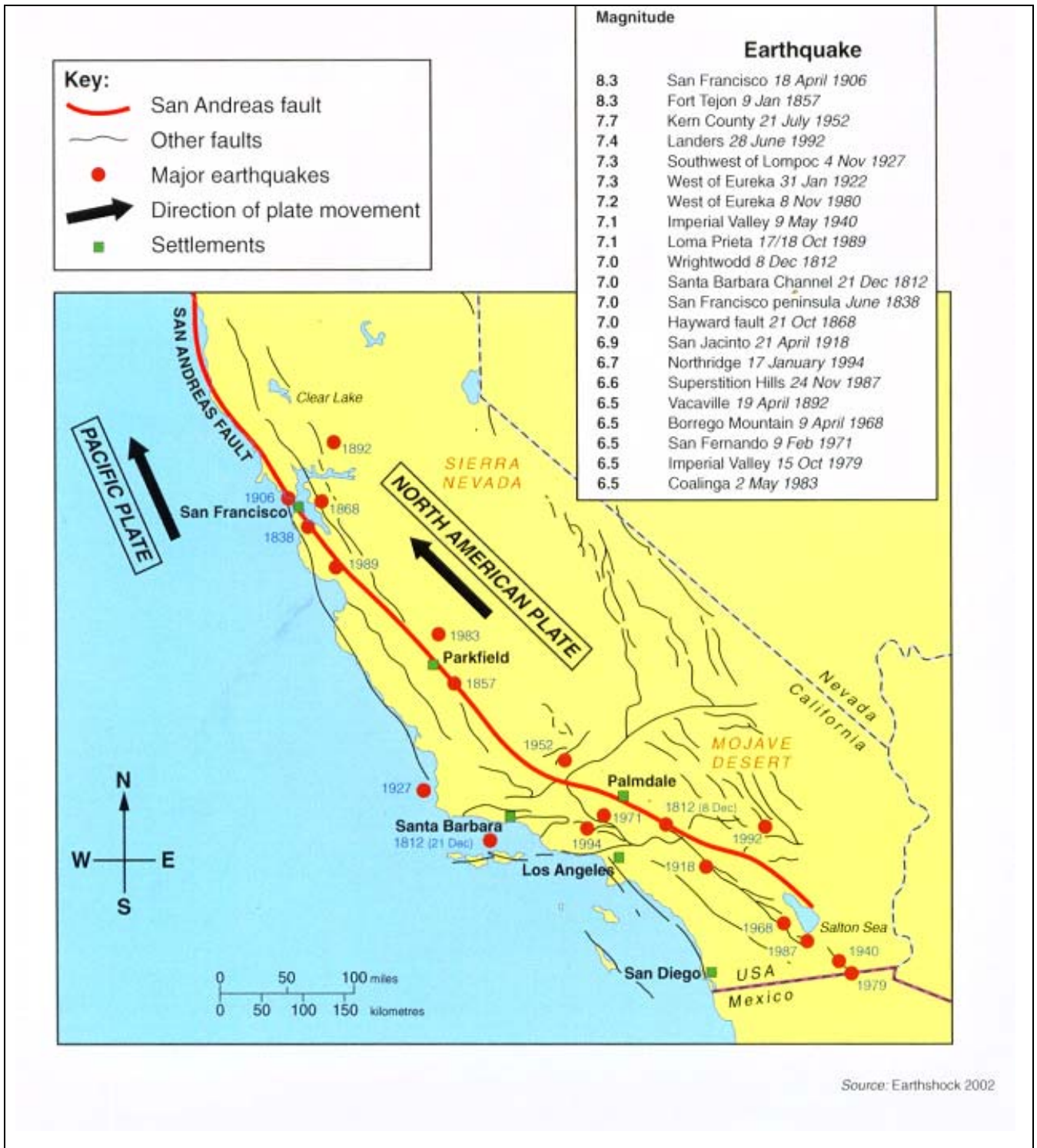
Source: BNSC

Fig. 7 A Tropical storm education poster



© Wide World Magazine

Fig. 8 Major Earthquakes of the San Andreas Fault, California, U.S.A.



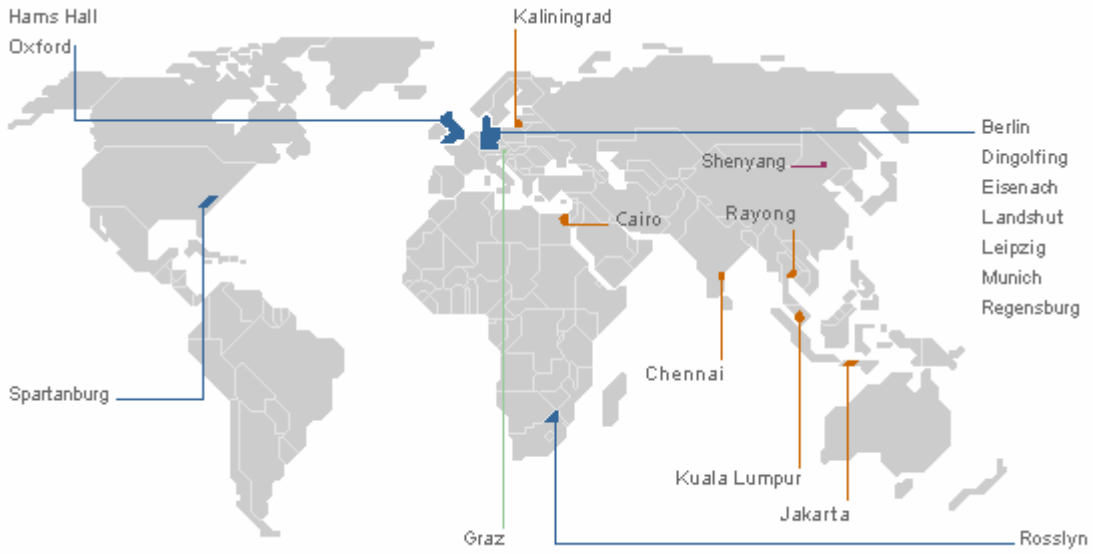
After ML Design, from *Earthshock* by Andrew Robinson, Thames & Hudson Ltd., London, 2001

**Fig. 9 Survivors of the Northridge earthquake, California, U.S.A.**



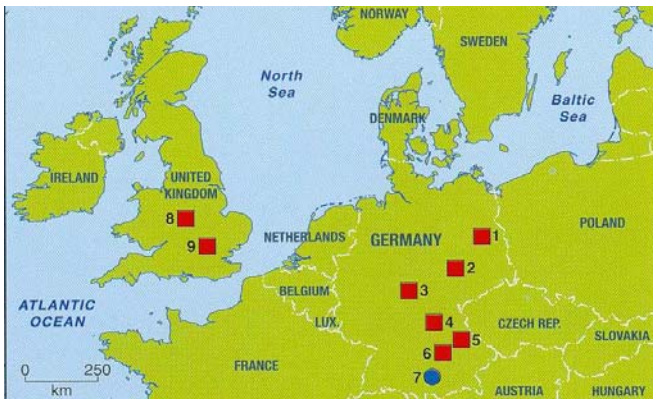
From *geog. 1* by Rosemarie Gallagher, Richard Parish, Janet Williamson, Tony Stone Images, Oxford University Press, 2000, page 111

**Fig. 10 Sites of BMW factories**



© adapted from BMW and Automotive Intelligence®

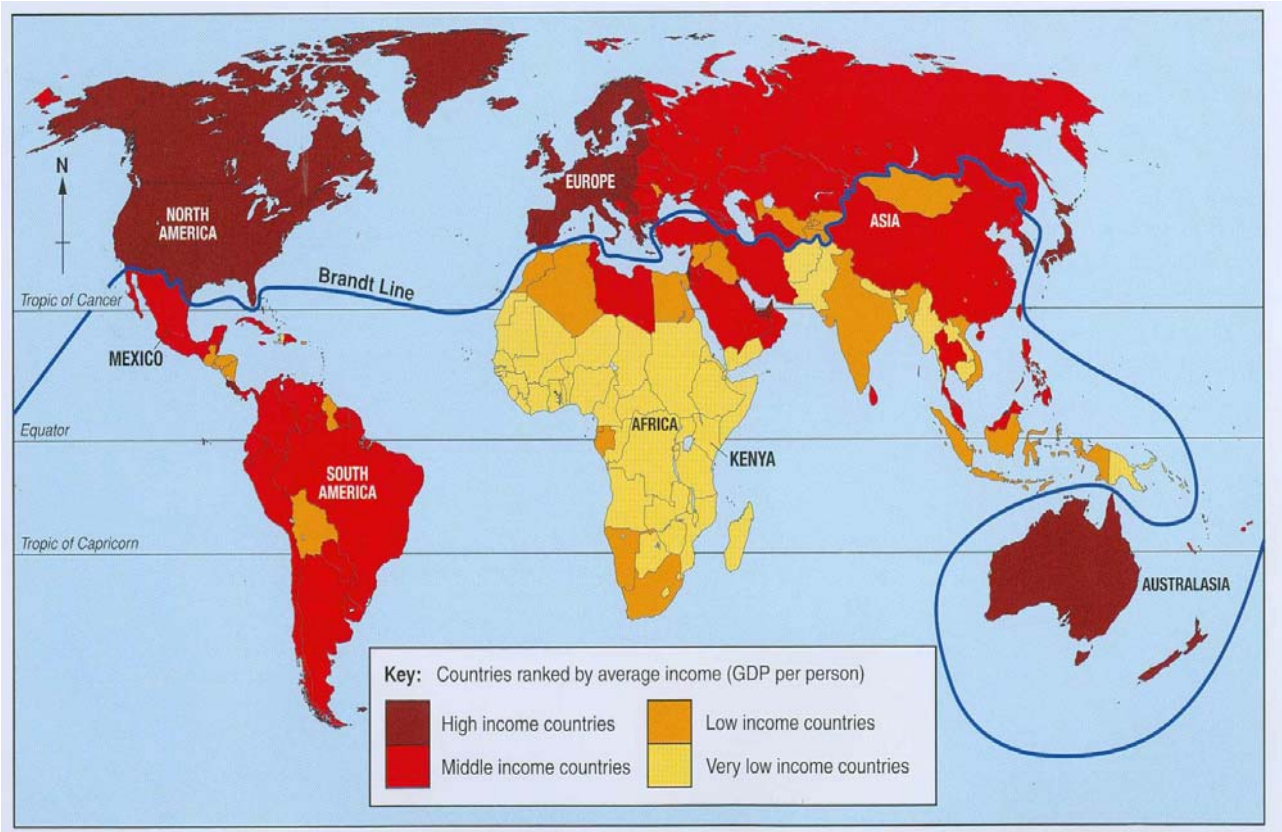
- Car production factories (make whole cars from start to finish)
- Car assembly factories (put together large parts of cars which have been made somewhere else)



1. Berlin
  2. Leipzig
  3. Eisenach
  4. Regensburg
  5. Dingolfing
  6. Landshut
  7. Munich
  8. Hams Hall
  9. Oxford
- Munich Headquarters
  - Car production factories (make whole cars from start to finish)



Fig. 11 The Brandt Line



### *Copyright Acknowledgements:*

#### *Sources*

**Fig. 6:** © Crown copyright 2004

**Fig. 7:** © Wide World Magazine

**Fig. 8:** After ML Design, from *Earthshock* by Andrew Robinson, Thames & Hudson Ltd., London, 2001

**Fig. 9:** From *geog.1* by Rosemarie Gallagher, Richard Parish, Janet Williamson, Tony Stone Images, Oxford University Press, 2000, page 111

**Fig. 10:** Data: [www.autointell.com](http://www.autointell.com). Reprinted with permission from BMW and Automotive Intelligence. © Automotive Intelligence®, Frankfurt, Germany

Permission to reproduce items where third-party owned material protected by copyright is included has been sought and cleared where possible. Every reasonable effort has been made by the publisher (OCR) to trace copyright holders, but if any items requiring clearance have unwittingly been included, the publisher will be pleased to make amends at the earliest opportunity.

OCR is part of the Cambridge Assessment Group. Cambridge Assessment is the brand name of University of Cambridge Local Examinations Syndicate (UCLES), which is itself a department of the University of Cambridge.

© OCR 2008