

OCR

Oxford Cambridge and RSA

Wednesday 3 June 2015 – Afternoon

GCSE GEOGRAPHY B (and Short Course)

B563/A772/01/02/RB Key Geographical Themes (Foundation and Higher Tier)

RESOURCE BOOKLET



INFORMATION FOR CANDIDATES

- The following abbreviations may be used:
 - MEDC – More Economically Developed Country
 - LEDC – Less Economically Developed Country
 - EU – European Union which includes the United Kingdom
- The questions tell you which resources you need to use.
- This document consists of **12** pages. Any blank pages are indicated.

INSTRUCTION TO EXAMS OFFICER/INVIGILATOR

- Do not send this Resource Booklet for marking; it should be retained in the centre or recycled. Please contact OCR Copyright should you wish to re-use this document.

CONTENTS OF THE RESOURCE BOOKLET

- Fig. 1 – Hydrographs for a river valley location in 1980 and 2010 after similar rainstorms (B563, A772)
- Fig. 2 – Landscapes for the river valley location (B563, A772)
- Fig. 3 – Evidence of coastal erosion at Skipsea on the Holderness Coast (B563, A772)
- Fig. 4 – Inner city houses (B563)
- Fig. 5 – Housing in an edge of town location (B563)
- Fig. 6 – A new shopping area (B563)
- Fig. 7 – Population pyramids (B563)
- Fig. 8a – The ten deadliest volcanoes of the twentieth century (B563)
- Fig. 8b – Locations of the ten deadliest volcanoes of the twentieth century and main tectonic plates (B563)
- Fig. 9 – Satellite image of a tropical storm over Japan (B563)
- Fig. 10 – Number of people employed by the Toyota car manufacturing company in 14 countries (A772)
- Fig. 11 – Number of factories in different countries where products are made for Nike (A772)

Fig. 1 Hydrographs for a river valley location in 1980 and 2010 after similar rainstorms

(For use with B563 Question 1 and A772 Question 1)

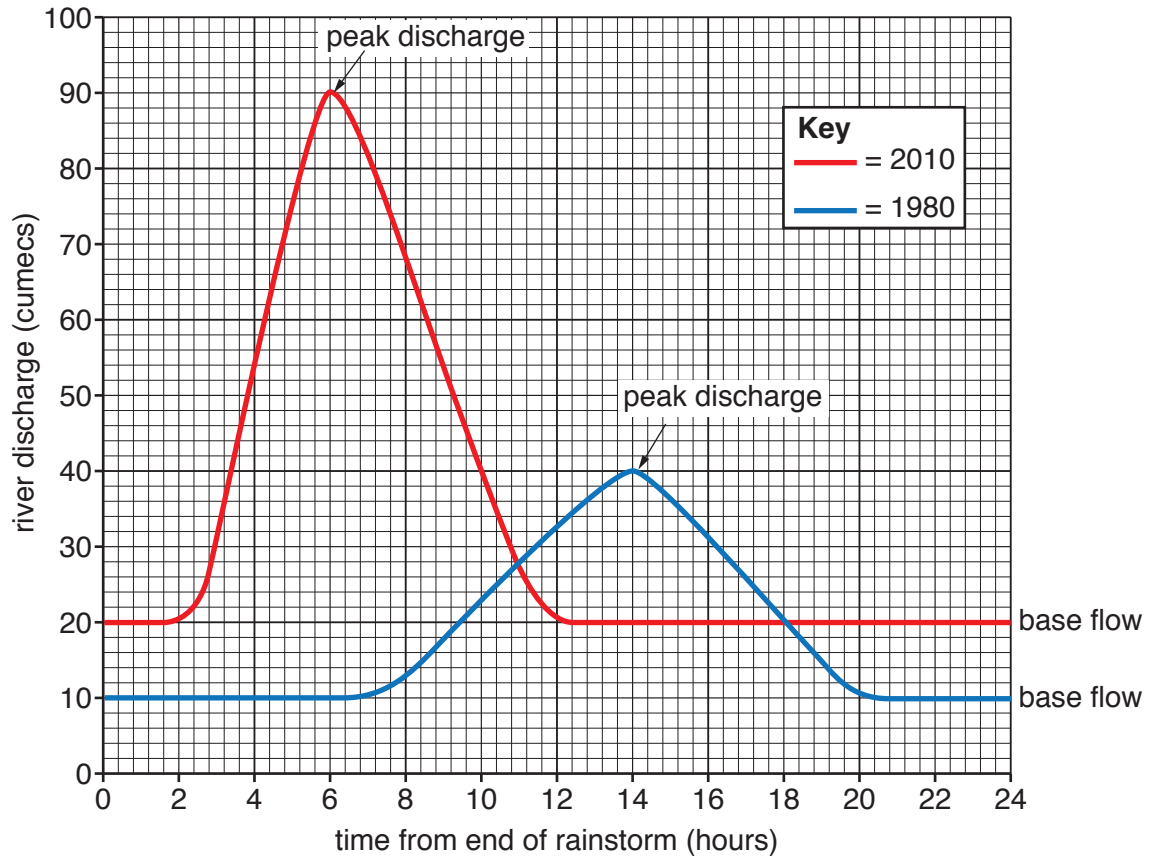


Fig. 2 Landscapes for the river valley location

(For use with B563 Question 1 and A772 Question 1)

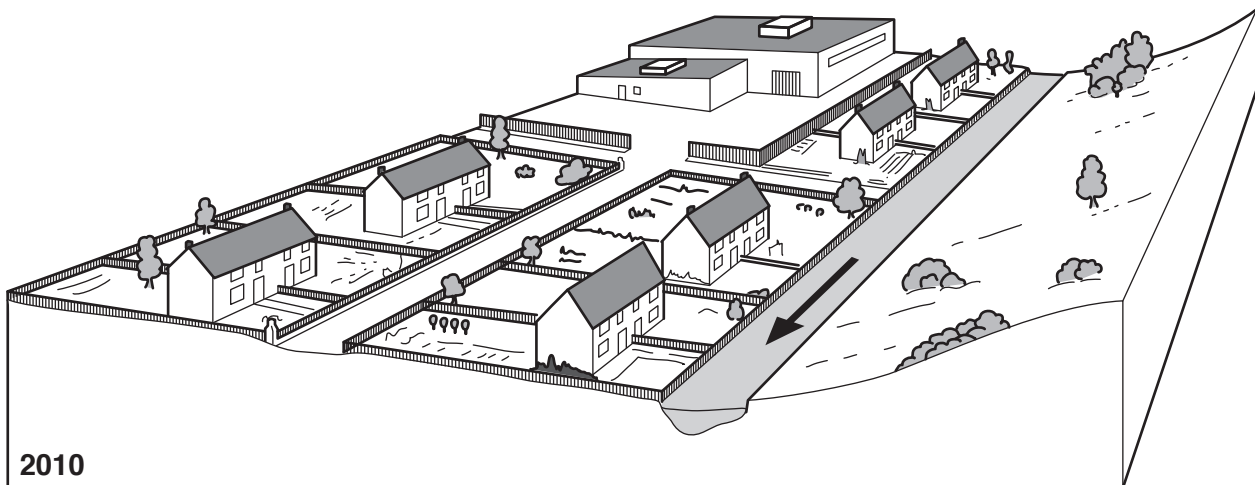
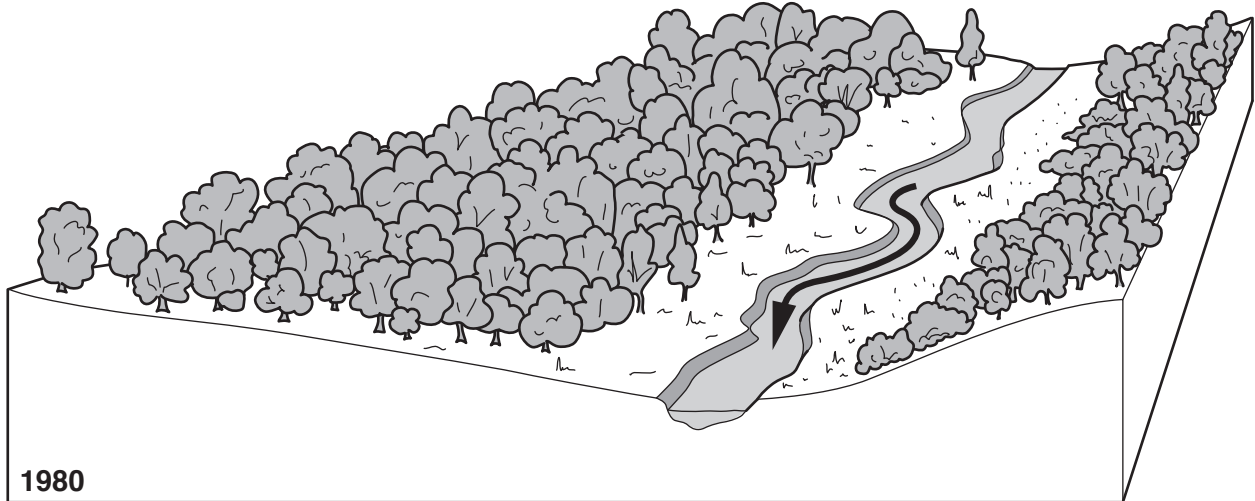


Fig. 3 Evidence of coastal erosion at Skipsea on the Holderness Coast

(For use with B563 Question 1 and A772 Question 1)

March 2011



May 2012



Fig. 4 Inner city houses
(For use with B563 Question 2)



Fig. 5 Housing in an edge of town location
(For use with B563 Question 2)



Fig. 6 A new shopping area

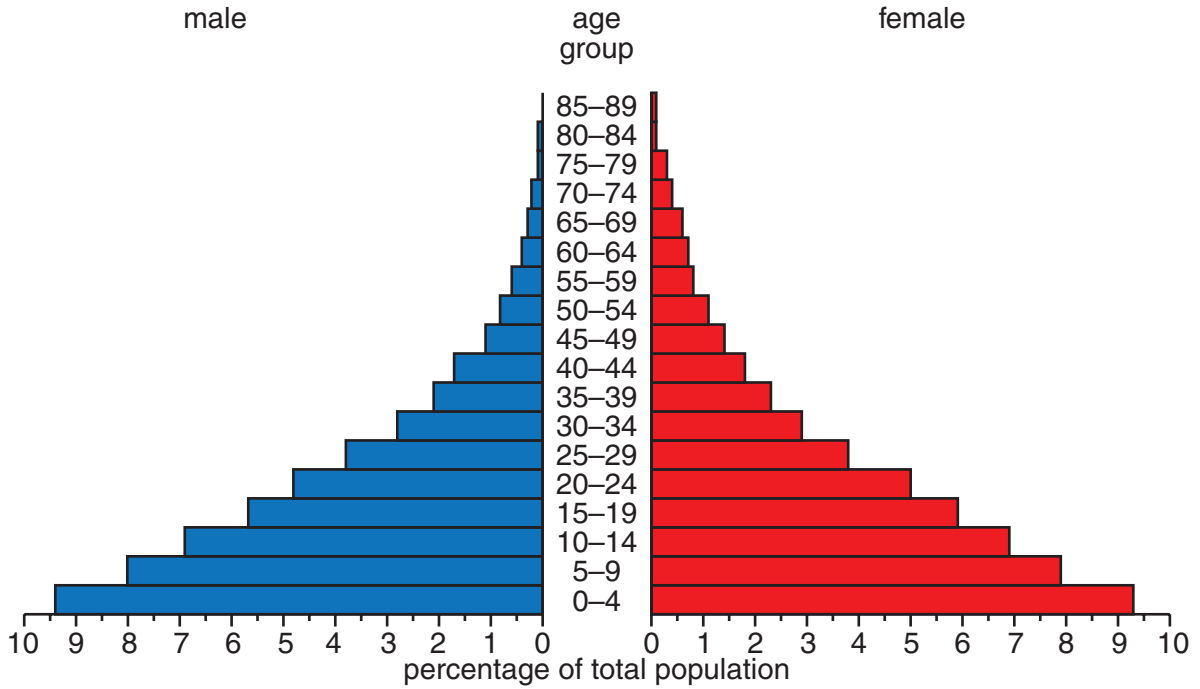
(For use with B563 Question 2)



Fig. 7 Population pyramids

(For use with B563 Question 2)

Uganda population pyramid 2013



UK population pyramid 2013

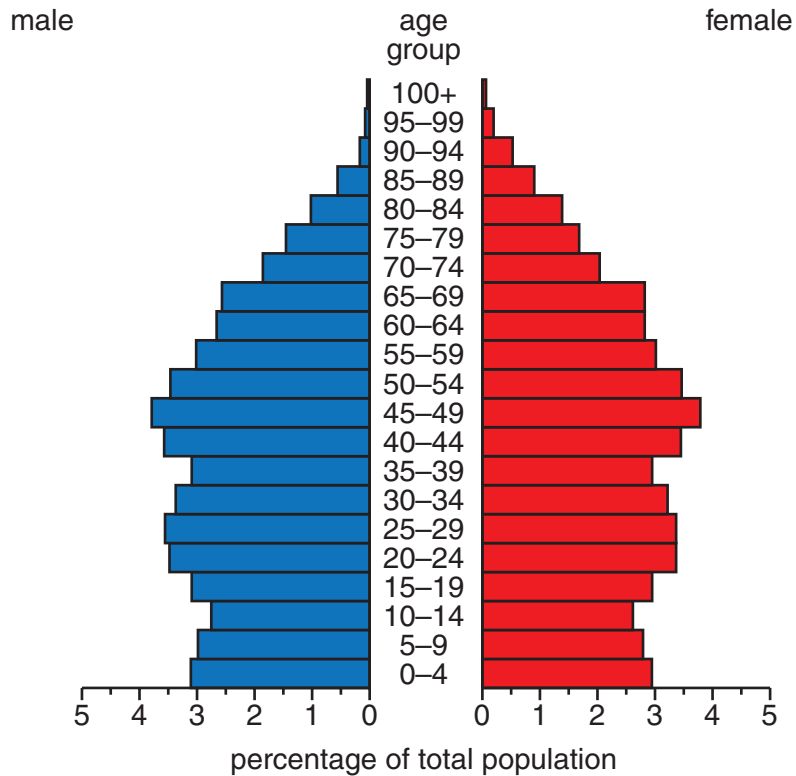


Fig. 8a The ten deadliest volcanoes of the twentieth century

(For use with B563 Question 3)

Year	Volcano	Country	Deaths
1902	Mount Pelée	Martinique	33 000
1985	Nevado del Ruiz	Colombia	23 000
1902	Santa María	Guatemala	6 000
1919	Mount Kelud	Indonesia	5 115
1982	El Chichón	Mexico	3 500
1951	Mount Lamington	Papua New Guinea	2 942
1902	Soufrière	St. Vincent	1 680
1963	Mount Agung	Indonesia	1 584
1930	Mount Merapi	Indonesia	1 369
1911	Mount Taal	Philippines	1 335

Fig. 8b Locations of the ten deadliest volcanoes of the twentieth century and main tectonic plates

(For use with B563 Question 3)

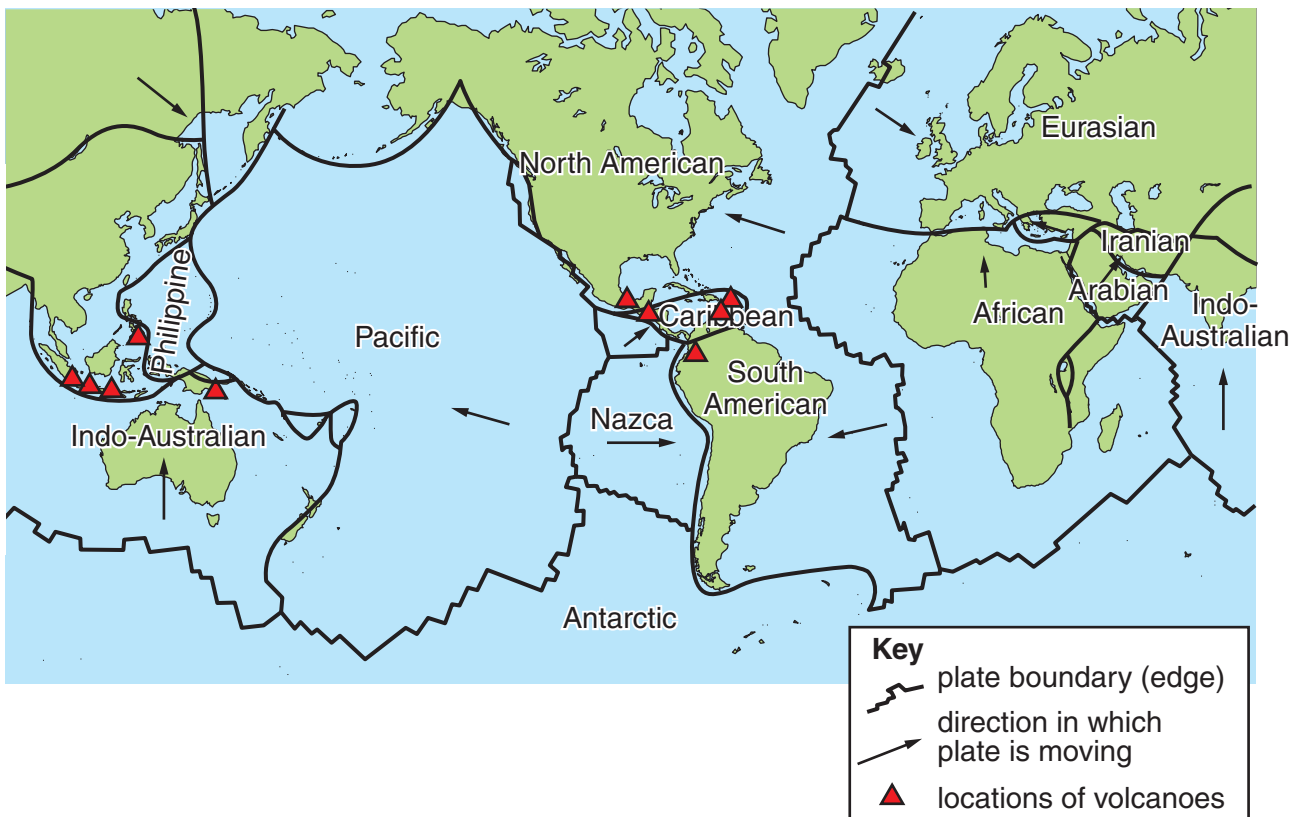


Fig. 9 Satellite image of a tropical storm over Japan

(For use with B563 Question 3)

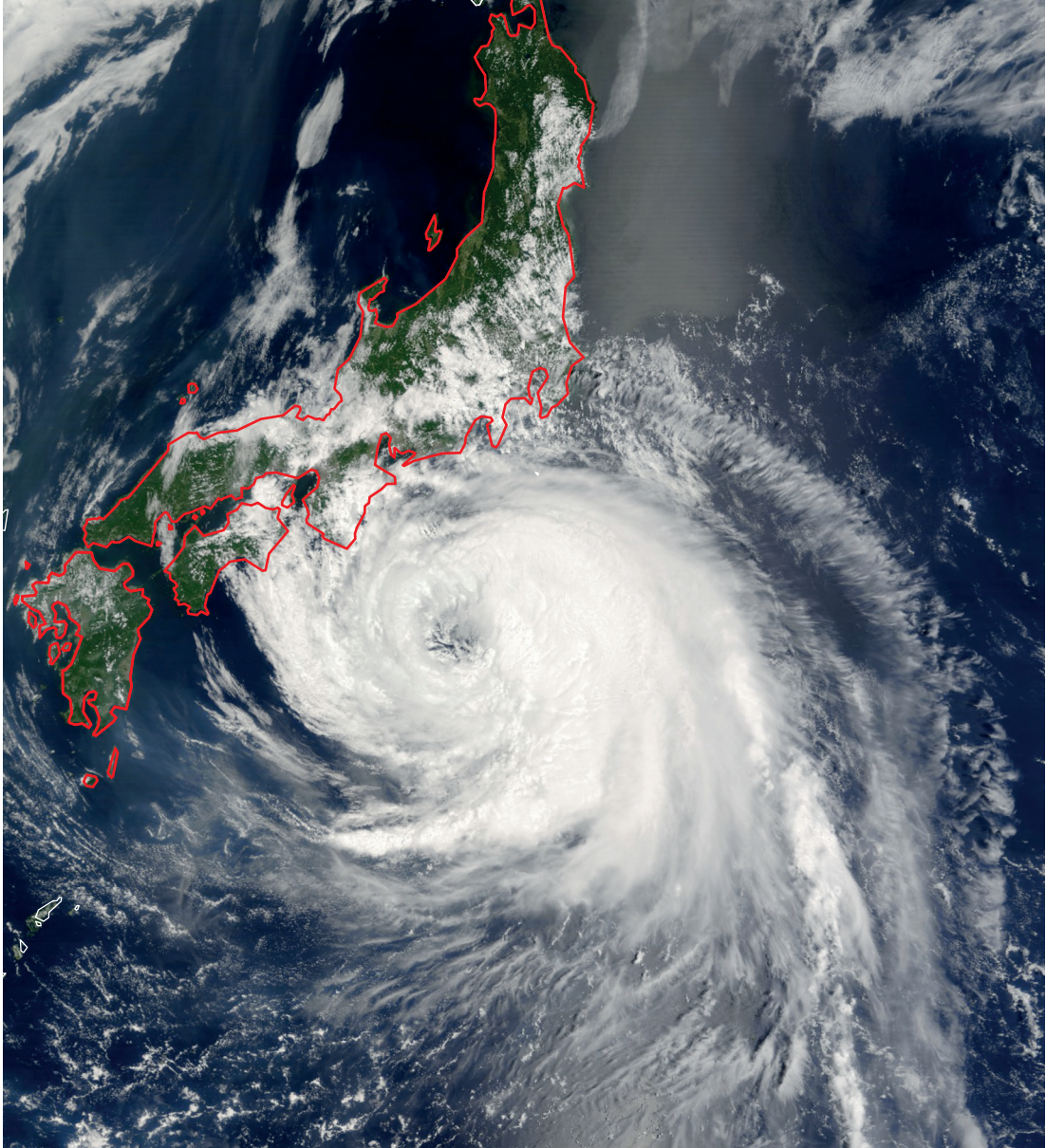


Fig. 10 Number of people employed by the Toyota car manufacturing company in 14 countries

(For use with A772 Question 2)

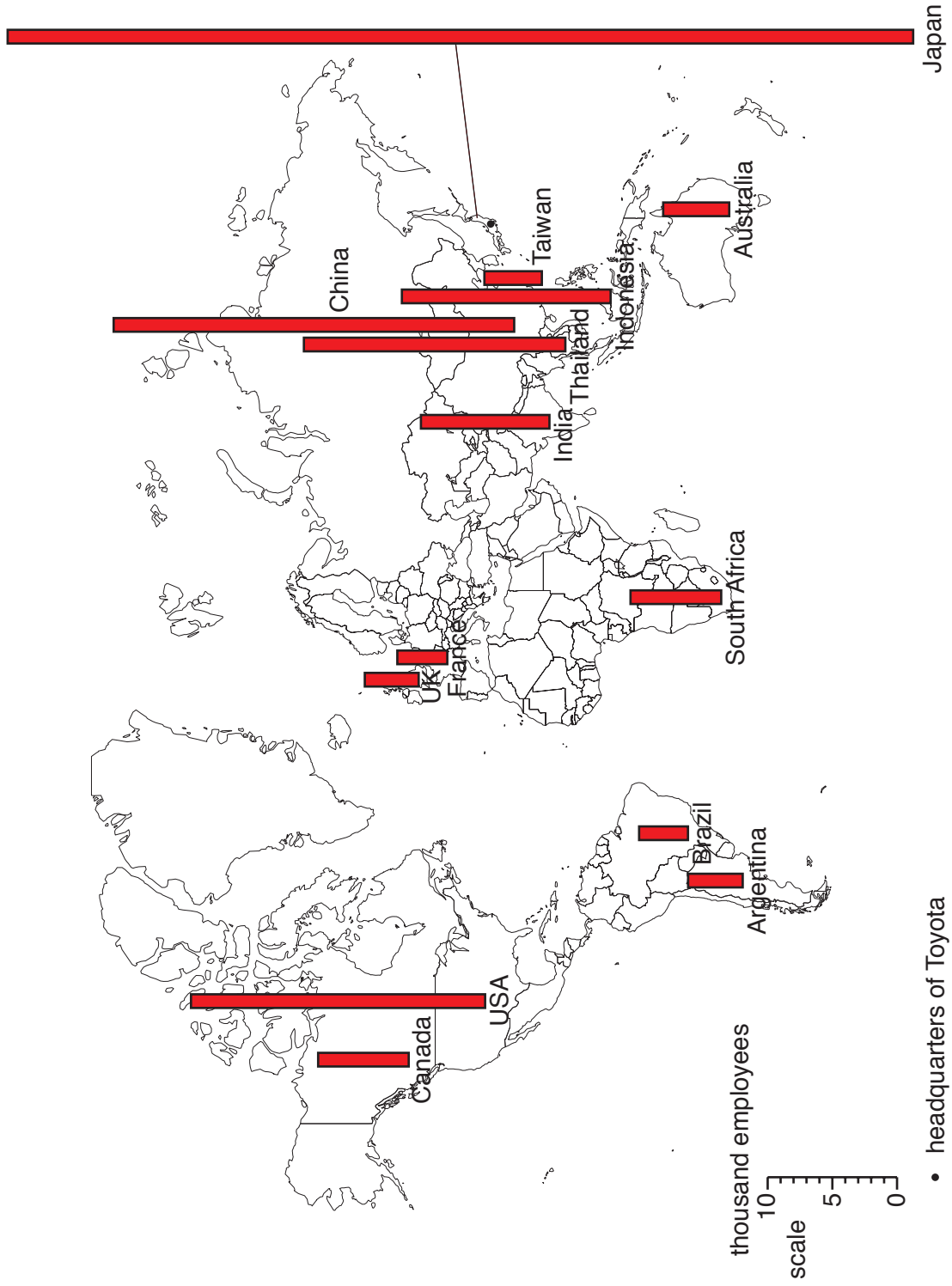


Fig. 11 Number of factories in different countries where products are made for Nike

(For use with A772 Question 2)

Country	GDP per person (\$US)	Number of factories producing products for Nike
USA	49 000	67
Taiwan	38 200	16
Japan	35 200	26
South Korea	32 100	24
Malaysia	15 800	21
Mexico	14 800	29
Brazil	11 900	56
Thailand	9 500	39
China	8 500	218
Indonesia	4 700	38
India	3 700	23
Vietnam	3 400	71

**Copyright Information**

OCR is committed to seeking permission to reproduce all third-party content that it uses in its assessment materials. OCR has attempted to identify and contact all copyright holders whose work is used in this paper. To avoid the issue of disclosure of answer-related information to candidates, all copyright acknowledgements are reproduced in the OCR Copyright Acknowledgements Booklet. This is produced for each series of examinations and is freely available to download from our public website (www.ocr.org.uk) after the live examination series.

If OCR has unwittingly failed to correctly acknowledge or clear any third-party content in this assessment material, OCR will be happy to correct its mistake at the earliest possible opportunity.

For queries or further information please contact the Copyright Team, First Floor, 9 Hills Road, Cambridge CB2 1GE.

OCR is part of the Cambridge Assessment Group; Cambridge Assessment is the brand name of University of Cambridge Local Examinations Syndicate (UCLES), which is itself a department of the University of Cambridge.