

GENERAL CERTIFICATE OF SECONDARY EDUCATION

**GEOGRAPHY A
AND SHORT COURSE**

1986/1086/1,2/RB

RESOURCE BOOKLET FOR PAPERS 1 AND 2

WEDNESDAY 4 JUNE 2008

Morning



INSTRUCTIONS TO CANDIDATES

This Resource Booklet contains resources for GCSE Specification A (1986) and GCSE Short Course (1086). They are to help you answer questions in either Paper 1 or Paper 2. You may not use all of the resources. The questions tell you which resources you need to use.

This document consists of **6** printed pages and **2** blank pages.

Photograph A



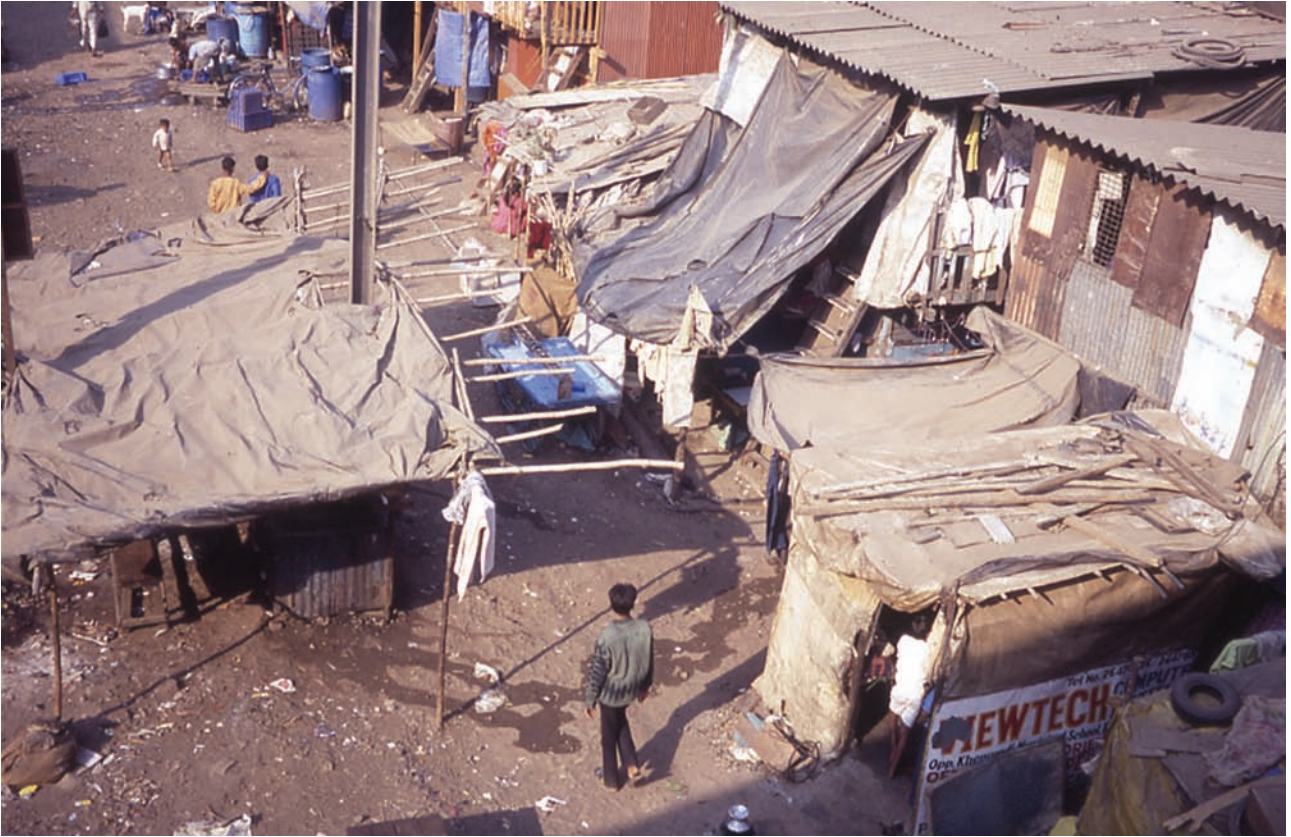
© S Sibley / OCR

Photograph B



© S Sibley / OCR

Photograph C



Source: John Pallister

Photograph D

A photograph has been removed due to third party copyright restrictions.

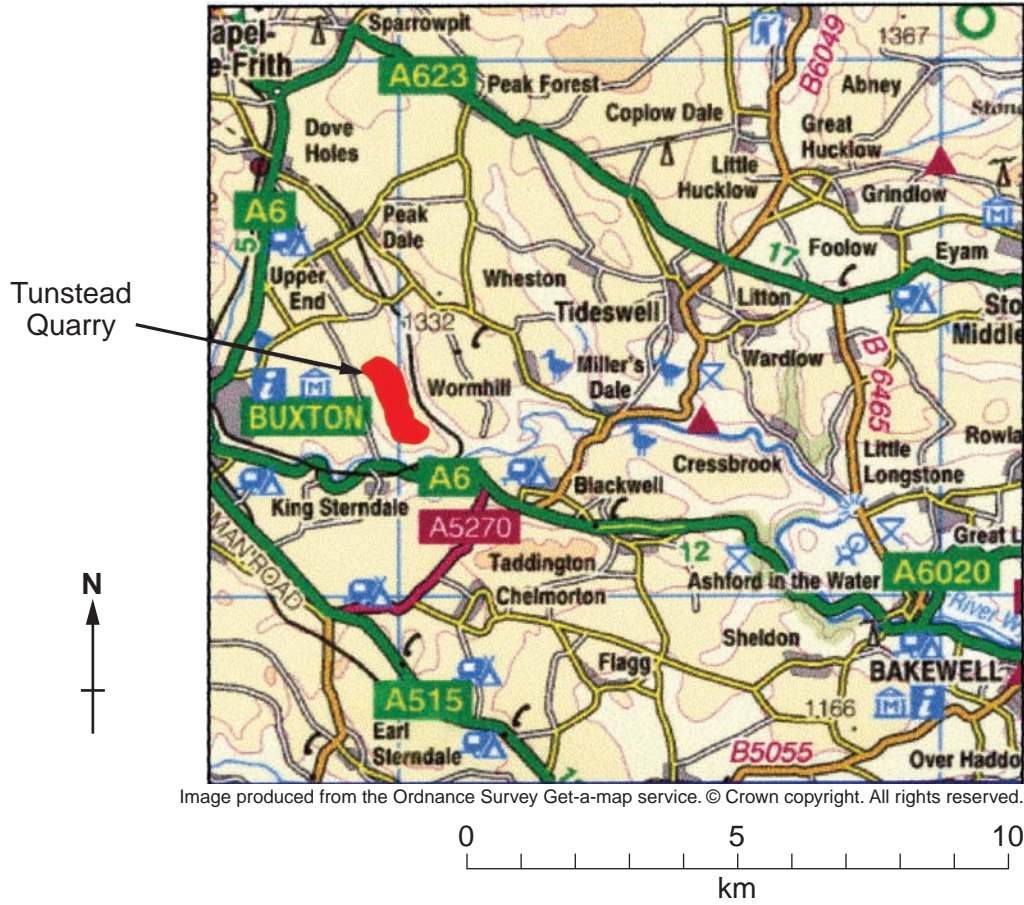
Details: Image of small child in slum area.

Photograph E



Source: www.childlabourers.net

Map F



Photograph G



© S Sibley / OCR

BLANK PAGE

Copyright Acknowledgements:

Photograph C Source: J Pallister
Photograph D Source: www.travelblog.org.uk
Photograph E Source: www.childlabourers.net
Map F Image produced from the Ordnance Survey Get-a-map service. © Crown copyright. All rights reserved.

Permission to reproduce items where third-party owned material protected by copyright is included has been sought and cleared where possible. Every reasonable effort has been made by the publisher (OCR) to trace copyright holders, but if any items requiring clearance have unwittingly been included, the publisher will be pleased to make amends at the earliest possible opportunity.

OCR is part of the Cambridge Assessment Group. Cambridge Assessment is the brand name of University of Cambridge Local Examinations Syndicate (UCLES), which is itself a department of the University of Cambridge.