

Write your name here

Surname

Other names

Pearson
Edexcel GCSE

Centre Number

--	--	--	--	--

Candidate Number

--	--	--	--

Geography B

Unit 2: People and the Planet

Foundation Tier

Thursday 22 May 2014 – Morning
Time: 1 hour 15 minutes

Paper Reference

5GB2F/01

You do not need any other materials.

Total Marks

Instructions

- Use **black** ink or ball-point pen.
- **Fill in the boxes** at the top of this page with your name, centre number and candidate number.
- In Section A, answer **all** questions.
- In Section B, answer **either** question 5 **or** 6.
- In Section C, answer **either** question 7 **or** 8.
- Answer the questions in the spaces provided
– *there may be more space than you need.*

Information

- The total mark for this paper is 78.
- The marks for **each** question are shown in brackets
– *use this as a guide as to how much time to spend on each question.*
- Questions labelled with an **asterisk** (*) are ones where the quality of your written communication will be assessed
– *you should take particular care on these questions with your spelling, punctuation and grammar, as well as the clarity of expression.*
- The marks available for spelling, punctuation and grammar are clearly indicated.

Advice

- Read each question carefully before you start to answer it.
- Check your answers if you have time at the end.

Turn over ►

P43078A

©2014 Pearson Education Ltd.

5/4/5/4



PEARSON

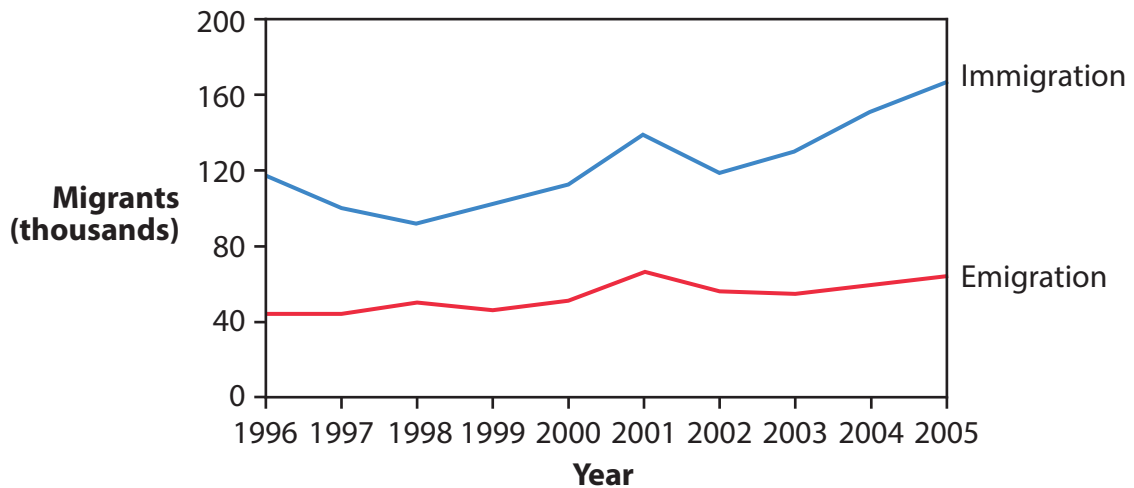
SECTION A – INTRODUCTION TO PEOPLE AND THE PLANET

Answer ALL questions in this section.

Some questions must be answered with a cross in a box ☒. If you change your mind about an answer, put a line through the box ☒ and then mark your new answer with a cross ☒.

Topic 1: Population Dynamics

- 1 Figure 1 shows migration to and from Australia, 1996–2005.



(Source: © Peter Stalker (www.pstalker.com))

Figure 1

- (a) Study Figure 1.

The following questions are multiple choice. Put a cross in the box of the answer that you select. **There is only one correct answer to each question.**

- (i) What was the highest number of **immigrants** in any one year?

(1)

- A 60 000
- B 70 000
- C 120 000
- D 170 000



(ii) Which of the following statements is correct?

(1)

- A** Emigration is always higher than immigration.
- B** Immigration is always higher than emigration.
- C** Emigration and immigration are at the same level.
- D** Emigration and immigration are lower in 2005 than in 1996.

(b) State **two** ways a government can attempt to control the number of migrants arriving in the country.

(2)

1

.....

2

.....

(c) Describe the trends in global population growth since 1800.

(4)

.....

.....

.....

.....

.....

.....

.....

.....

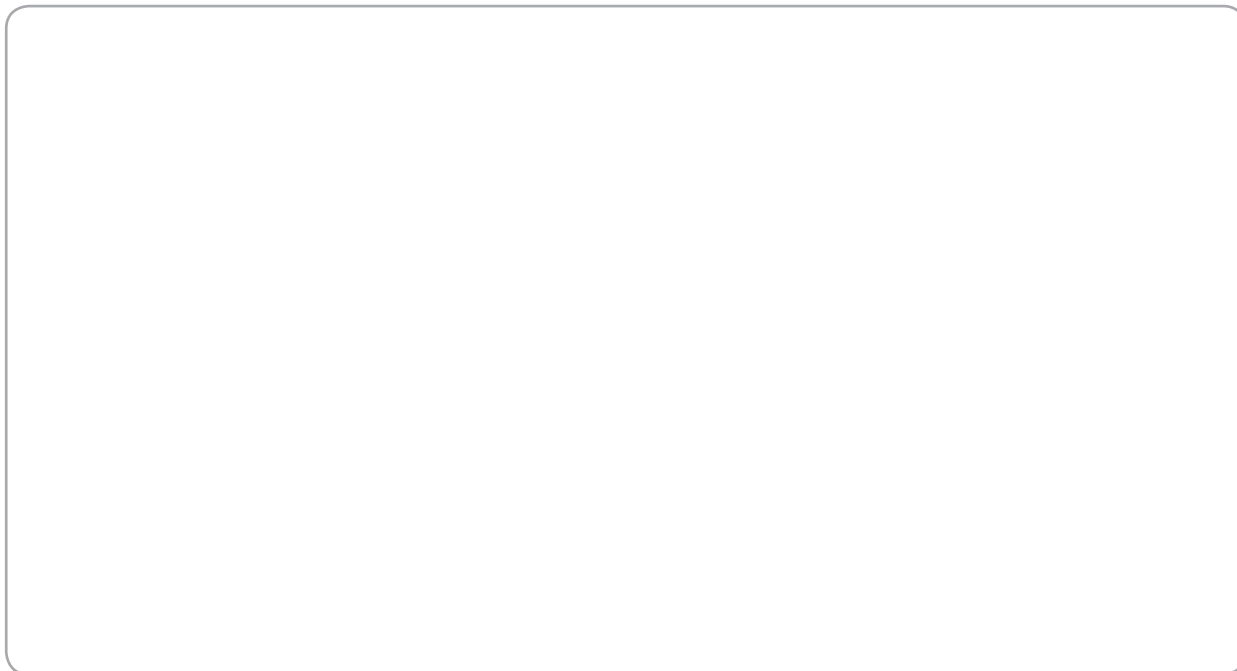


(d) For a named developing country, explain its population **structure**.

You may draw a diagram to help your answer.

(4)

Named developing country



.....

.....

.....

.....

.....

.....

.....

.....

.....

.....

(Total for Question 1 = 12 marks)



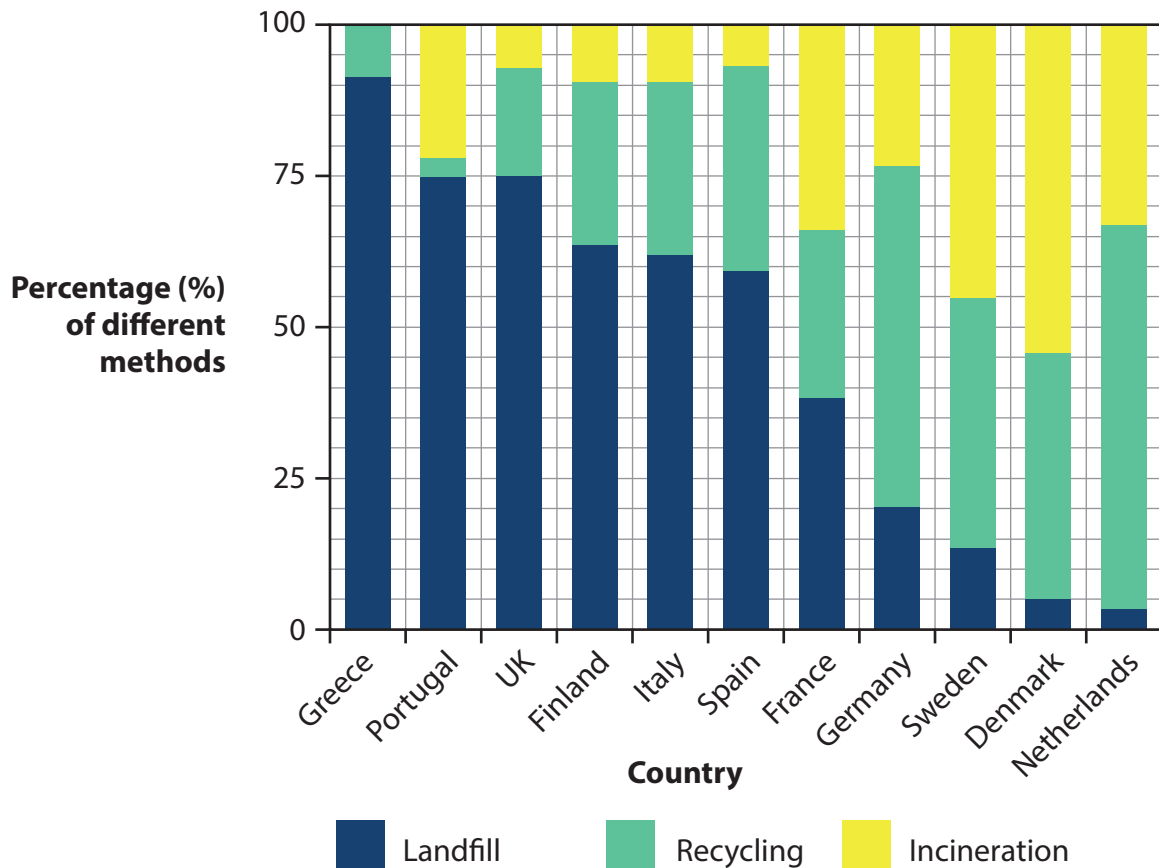
BLANK PAGE

Question 2 is on the next page



Topic 2: Consuming Resources

2 Figure 2 shows methods of waste disposal in selected European countries.



(Source: This information is licensed under the terms of the Open Government Licence [<http://www.nationalarchives.gov.uk/doc/open-government-licence/version/2/>])

Figure 2

(a) Study Figure 2.

The following questions are multiple choice. Put a cross in the box of the answer that you select. **There is only one correct answer to each question.**

(i) Which country has the largest percentage of landfill?

(1)

- A Greece
- B Sweden
- C Portugal
- D Denmark



(ii) Which country recycles the largest percentage of its waste?

(1)

- A Germany
- B France
- C Netherlands
- D Italy

(b) State **two** reasons why global food demand has been growing.

(2)

1

2

(c) Describe **two** ways in which new technologies might help solve resource shortages.

(4)

1

.....

.....

2

.....

.....

.....



(d) For a named **non-renewable** resource, explain why consumption varies from place to place.

(4)

Named non-renewable resource

.....

.....

.....

.....

.....

.....

.....

.....

.....

.....

(Total for Question 2 = 12 marks)



BLANK PAGE

Question 3 is on the next page



Topic 3: Globalisation

3 Figure 3 shows changes in the value of international trade between 2005 and 2013.

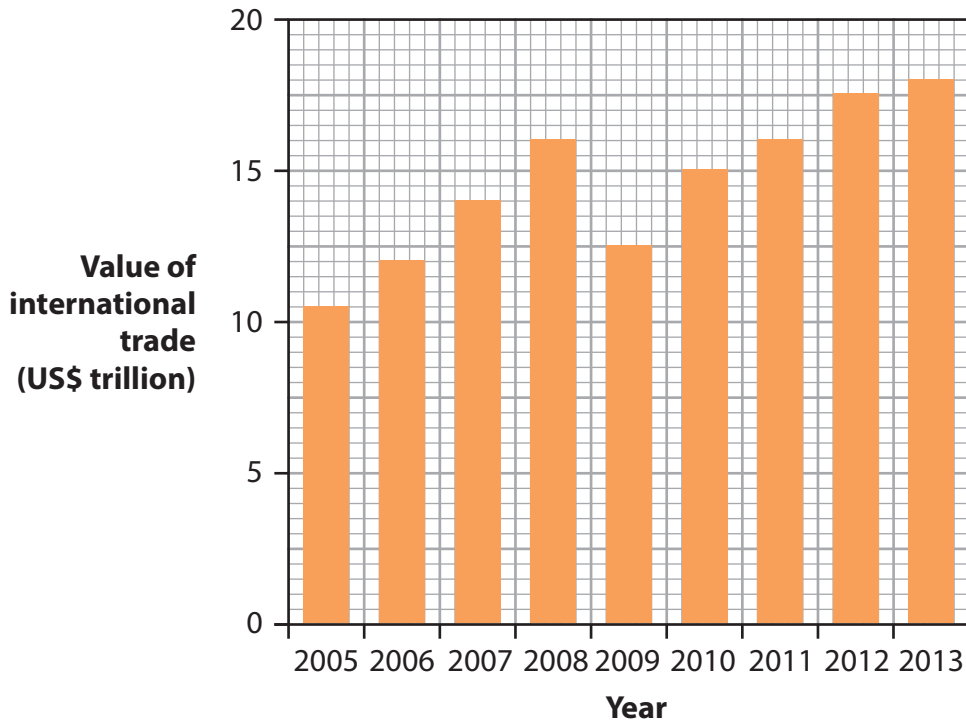


Figure 3

(a) Study Figure 3.

The following questions are multiple choice. Put a cross in the box of the answer that you select. **There is only one correct answer to each question.**

(i) In which year did international trade fall?

(1)

- A 2006
- B 2009
- C 2011
- D 2013

(ii) Which of the following statements about the increased value of international trade between 2005 and 2013 is correct?

(1)

- A It has risen by nearly US\$8 trillion.
- B It has risen by about US\$4 trillion.
- C It has fallen by nearly US\$6 trillion.
- D It has stayed at the same level.



(b) Outline **one** way the World Trade Organization (WTO) attempts to create a more globalised economy.

(2)

.....

.....

.....

.....

(c) Describe how **primary** employment changes as a country develops.

(4)

.....

.....

.....

.....

.....

.....

.....

.....



(d) For a named transnational corporation (TNC), explain how it operates in different parts of the world.

(4)

Named TNC

.....

.....

.....

.....

.....

.....

.....

.....

.....

.....

(Total for Question 3 = 12 marks)



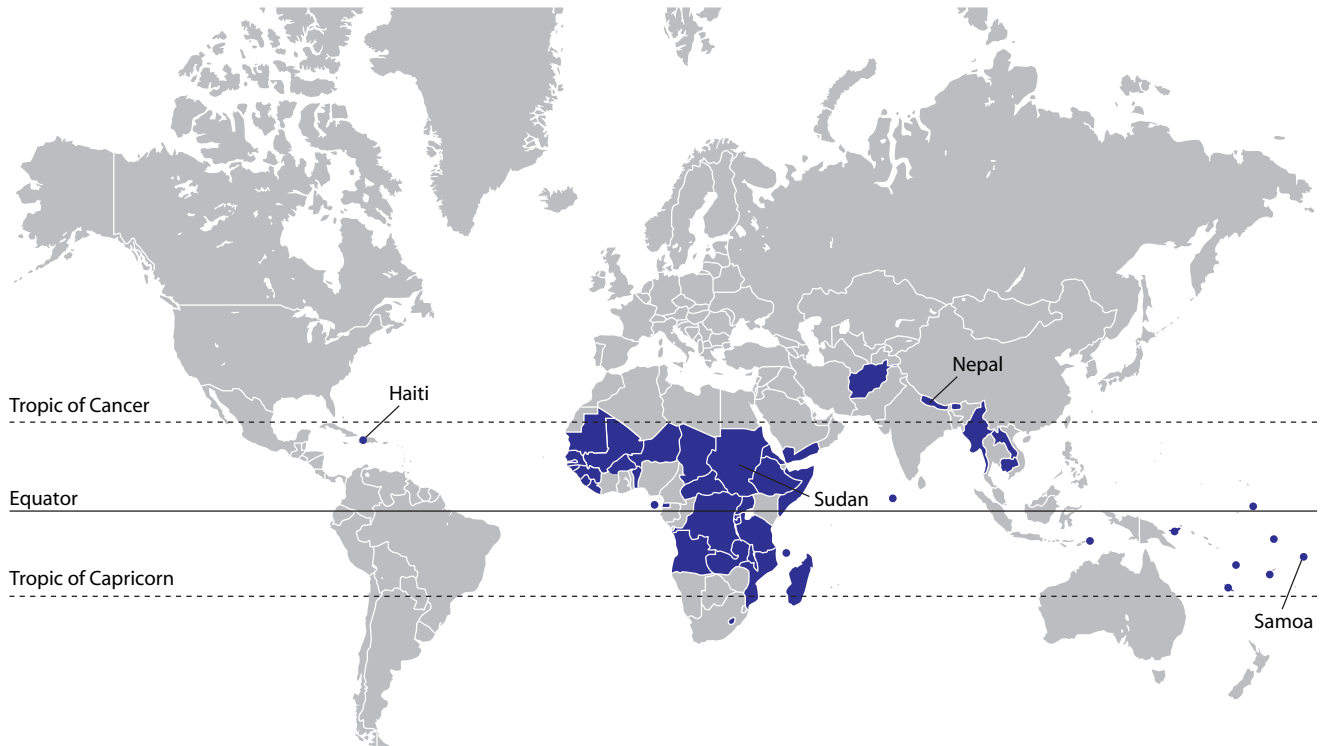
BLANK PAGE

Question 4 is on the next page



Topic 4: Development Dilemmas

4 Figure 4 shows the location of the 48 Least Developed Countries.



■ Least Developed Countries

Figure 4

(a) Study Figure 4.

The following questions are multiple choice. Put a cross in the box of the answer that you select. **There is only one correct answer to each question.**

(i) Which continent has the largest number of Least Developed Countries?

(1)

- A Europe
- B South America
- C Africa
- D Asia

(ii) Which of the following Least Developed Countries is in Asia?

(1)

- A Sudan
- B Haiti
- C Samoa
- D Nepal



(b) State **two** characteristics of bottom-up development strategies.

(2)

1

.....

2

.....

(c) Describe Rostow's modernisation theory.

(4)

.....

.....

.....

.....

.....

.....

.....

.....



P 4 3 0 7 8 A 0 1 5 3 2

(d) For a named developing country in Sub-Saharan Africa, describe its recent economic development.

(4)

Named country

.....

.....

.....

.....

.....

.....

.....

.....

.....

.....

(Total for Question 4 = 12 marks)

TOTAL FOR SECTION A = 48 MARKS



BLANK PAGE

Question 5 is on the next page



SECTION B – SMALL-SCALE PEOPLE AND THE PLANET

Answer ONE question in this section.

Topic 5: The Changing Economy of the UK

If you answer Question 5 put a cross in the box .

Spelling, punctuation and grammar will be assessed in 5*(c).

- 5** Figure 5 shows the distribution of jobs in Information Technology (IT) in England, Scotland and Wales in 2011.

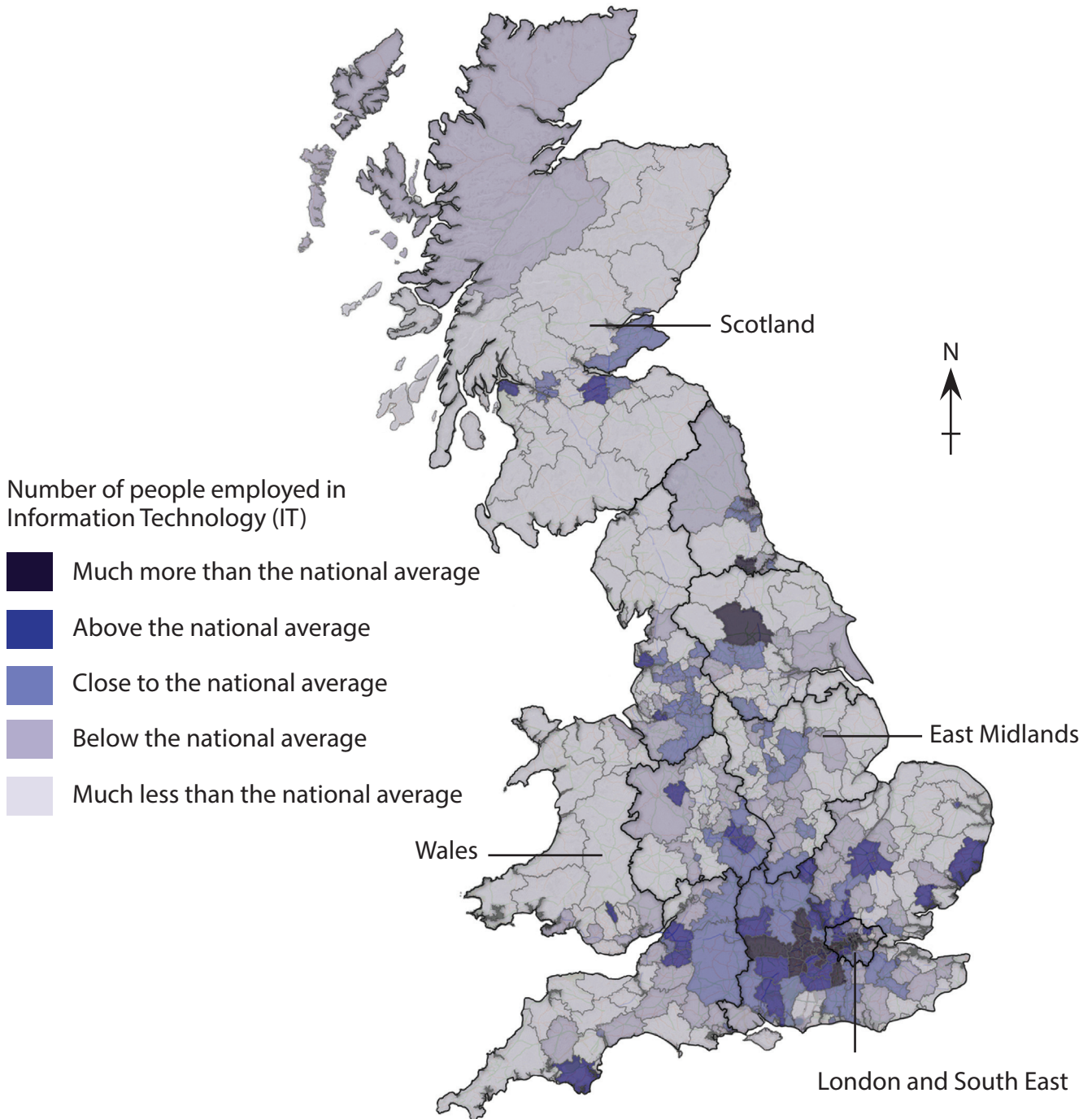


Figure 5



(a) Study Figure 5.

The following questions are multiple choice. Put a cross in the box of the answer that you select. **There is only one correct answer to each question.**

(i) Which of the following has the most areas with an above national average number of IT jobs? (1)

- A East Midlands
- B London and the South East
- C Scotland
- D Wales

(ii) Which of the following best describes IT jobs? (1)

- A High paid jobs in transport.
- B Low paid jobs in call centres.
- C High paid jobs using computers.
- D Low paid jobs in the primary sector.

(iii) Suggest **one** reason for the distribution of IT jobs shown on Figure 5. (2)

.....

.....

.....

.....

(b) Describe **one** problem of developing a brownfield site. (2)

.....

.....

.....

.....



BLANK PAGE

Question 6 is on the next page

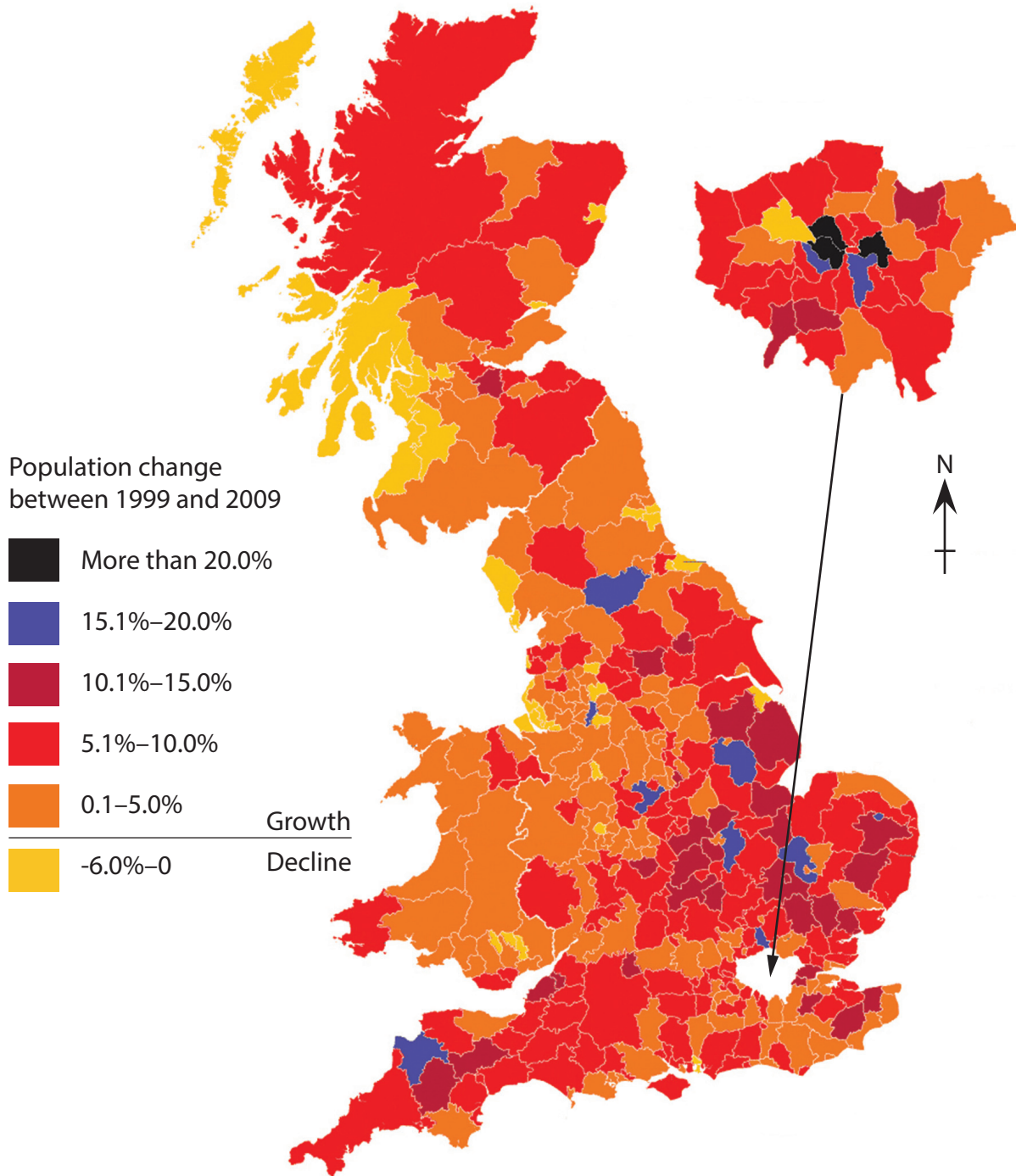


Topic 6: Changing Settlements in the UK

If you answer Question 6 put a cross in the box .

Spelling, punctuation and grammar will be assessed in 6*(c).

- 6 Figure 6 shows population change by local authority area in England, Scotland and Wales between 1999 and 2009.



(Source: Copyright Guardian News & Media Ltd 2010)

Figure 6



(a) Study Figure 6.

The following questions are multiple choice. Put a cross in the box of the answer that you select. **There is only one correct answer to each question.**

(i) Which of the following includes areas that have experienced population growth of over 20%? (1)

- A Northern England
- B Scotland
- C London
- D Wales

(ii) Which of the following best explains why some urban areas have lost population? (1)

- A Loss of jobs in manufacturing.
- B Houses are being demolished.
- C People moving overseas when they retire.
- D Loss of jobs in agriculture.

(iii) Suggest **one** reason why the population has grown rapidly in some areas shown on Figure 6. (2)

.....

.....

.....

.....

(b) Describe **one** way urban areas can 'rebrand'. (2)

.....

.....

.....

.....



BLANK PAGE

Question 7 is on the next page



(a) Study Figure 7.

The following questions are multiple choice. Put a cross in the box of the answer that you select. **There is only one correct answer to each question.**

(i) In which of the following countries do more than half the urban population live in slum housing? (1)

- A Morocco
- B Egypt
- C South Africa
- D Sudan

(ii) Which of the following countries has the largest **number** of people living in slum housing? (1)

- A South Africa
- B Sudan
- C Nigeria
- D Ethiopia

(iii) Outline **one** problem caused by the growth of slum housing. (2)

.....

.....

.....

.....

(b) Explain what is meant by a city's **eco-footprint**. (2)

.....

.....

.....

.....



BLANK PAGE

Question 8 is on the next page



Topic 8: The Challenges of a Rural World

If you answer Question 8 put a cross in the box .

Spelling, punctuation and grammar will be assessed in 8*(c).

- 8 Figure 8 shows the percentage of United States farmers who had high-speed broadband connectivity in 2007.

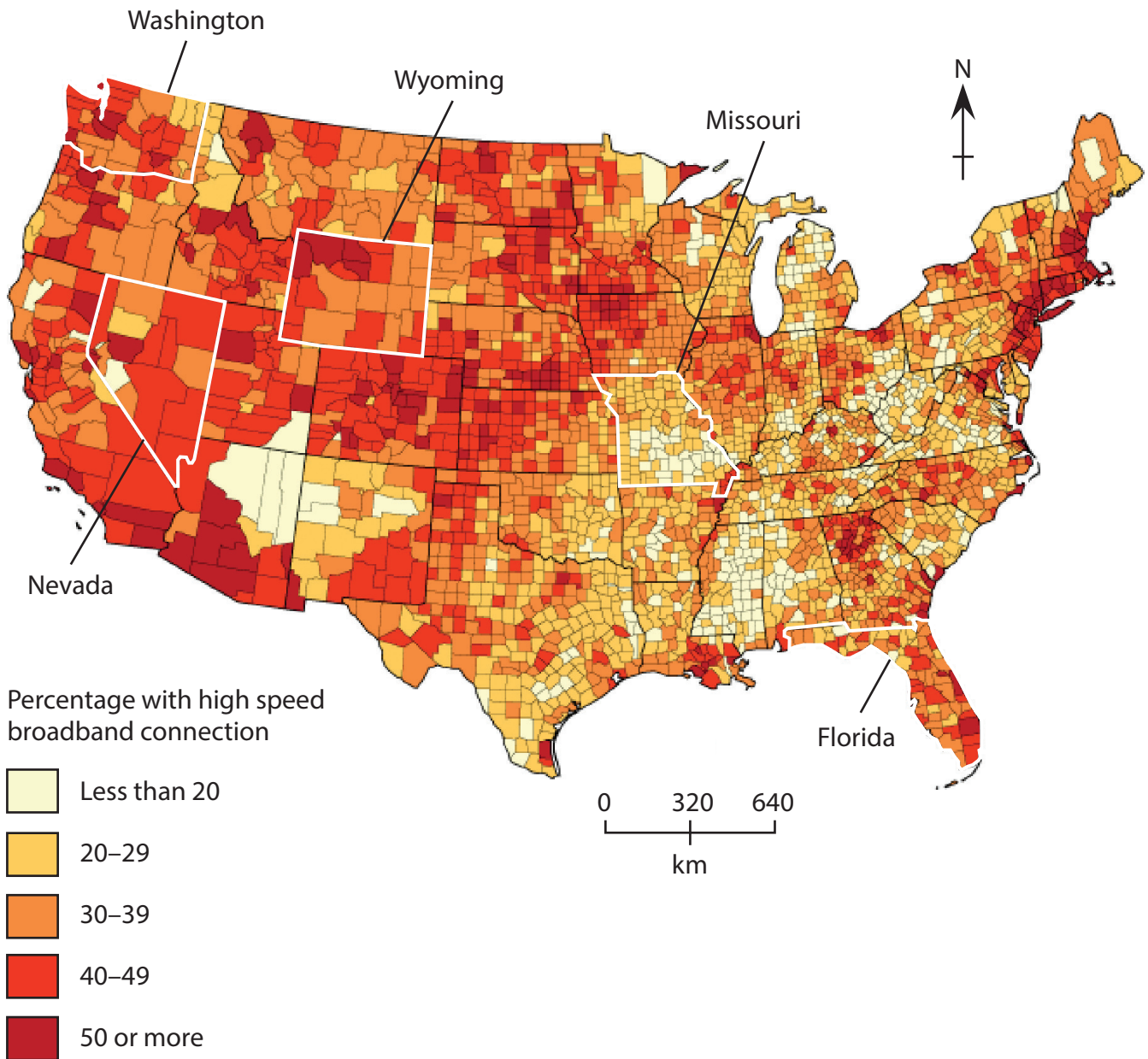


Figure 8



(a) Study Figure 8.

The following questions are multiple choice. Put a cross in the box of the answer that you select. **There is only one correct answer to each question.**

(i) Which of the following states has the **lowest overall** high-speed broadband connectivity? (1)

- A Florida
- B Missouri
- C Washington
- D Nevada

(ii) Which of the following is true of high-speed broadband connectivity in Wyoming? (1)

- A Most areas have less than 20%.
- B Half the areas have less than 20%.
- C No areas have less than 20%.
- D All areas have less than 20%.

(iii) Outline **one** impact of rural isolation. (2)

.....

.....

.....

.....

(b) Explain what is meant by **intermediate** technology. (2)

.....

.....

.....

.....



