

Write your name here

Surname

Other names

Centre Number

Candidate Number

Edexcel GCSE

Geography B

Unit 2: People and the Planet

Higher Tier

Friday 17 June 2011 – Morning
Time: 1 hour

Paper Reference
5GB2H/01

You do not need any other materials.

Total Marks

Instructions

- Use **black** ink or ball-point pen.
- **Fill in the boxes** at the top of this page with your name, centre number and candidate number.
- In Section **A**, answer **ALL** the questions.
- In Section **B**, answer **either** question **5** or **6**.
- In Section **C**, answer **either** question **7** or **8**.
- Answer the questions in the spaces provided
– *there may be more space than you need.*

Information

- The total mark for this paper is 50.
- The marks for **each** question are shown in brackets
– *use this as a guide as to how much time to spend on each question.*
- Questions labelled with an **asterisk** (*) are ones where the quality of your written communication will be assessed
– *you should take particular care on these questions with your spelling, punctuation and grammar, as well as the clarity of expression.*

Advice

- Read each question carefully before you start to answer it.
- Keep an eye on the time.
- Check your answers if you have time at the end.

Turn over ►

P38871A

©2011 Edexcel Limited.

5/7/4



P 3 8 8 7 1 A 0 1 2 0

edexcel 
advancing learning, changing lives

SECTION A – INTRODUCTION TO PEOPLE AND THE PLANET

Answer ALL questions in this section.

Topic 1: Population Dynamics

1 Study Figure 1.

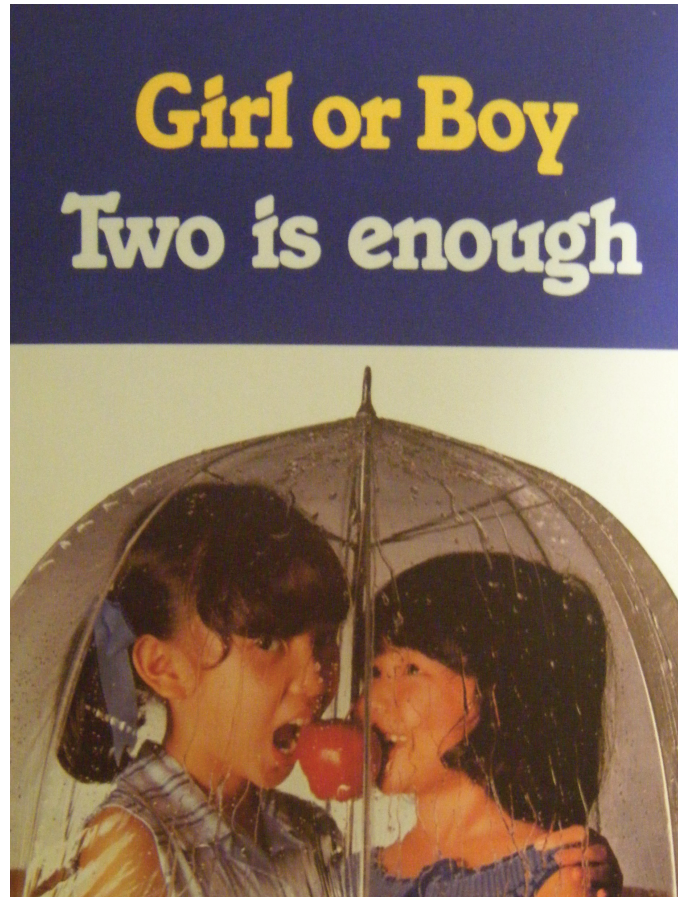


Figure 1 – A poster about family planning

(a) Outline **two** points about family planning made by the poster.

(2)

1

.....

2

.....



(b) Explain **one** reason why some countries have a high birth rate.

(2)

.....

.....

.....

(c) Explain why the future growth rate of the world's population is hard to predict.

(4)

.....

.....

.....

.....

.....

.....

.....

.....

.....

(Total for Question 1 = 8 marks)



Topic 2: Consuming Resources

2 Study Figure 2.

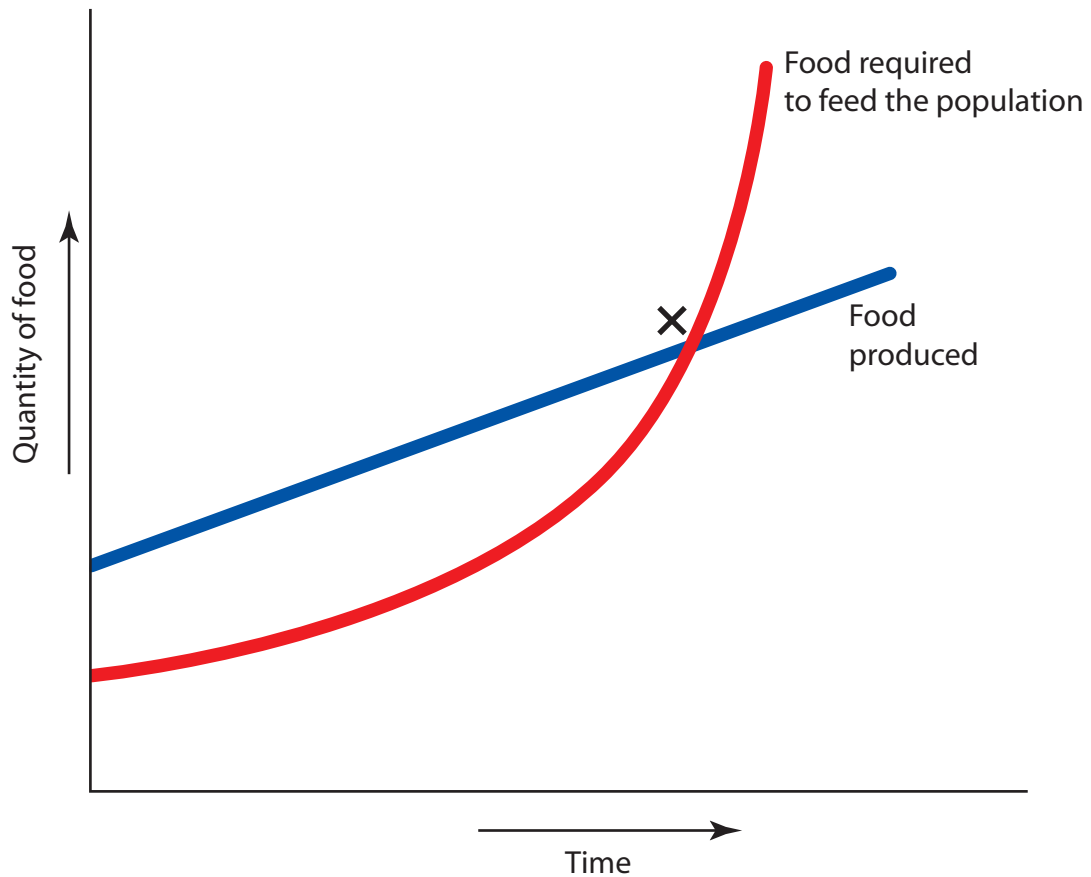


Figure 2 – A diagram showing Malthus's population theory

(a) Outline **one** possible global result of 'food required' exceeding 'food produced'.

(2)

.....

.....

.....

.....

(b) Explain **one** reason why population growth might be good for a country.

(2)

.....

.....

.....

.....



(c) For a named resource, describe the inequalities in its consumption.

(4)

Named resource

.....

.....

.....

.....

.....

.....

.....

.....

.....

.....

(Total for Question 2 = 8 marks)



Topic 3: Living Spaces

3 Study Figure 3.

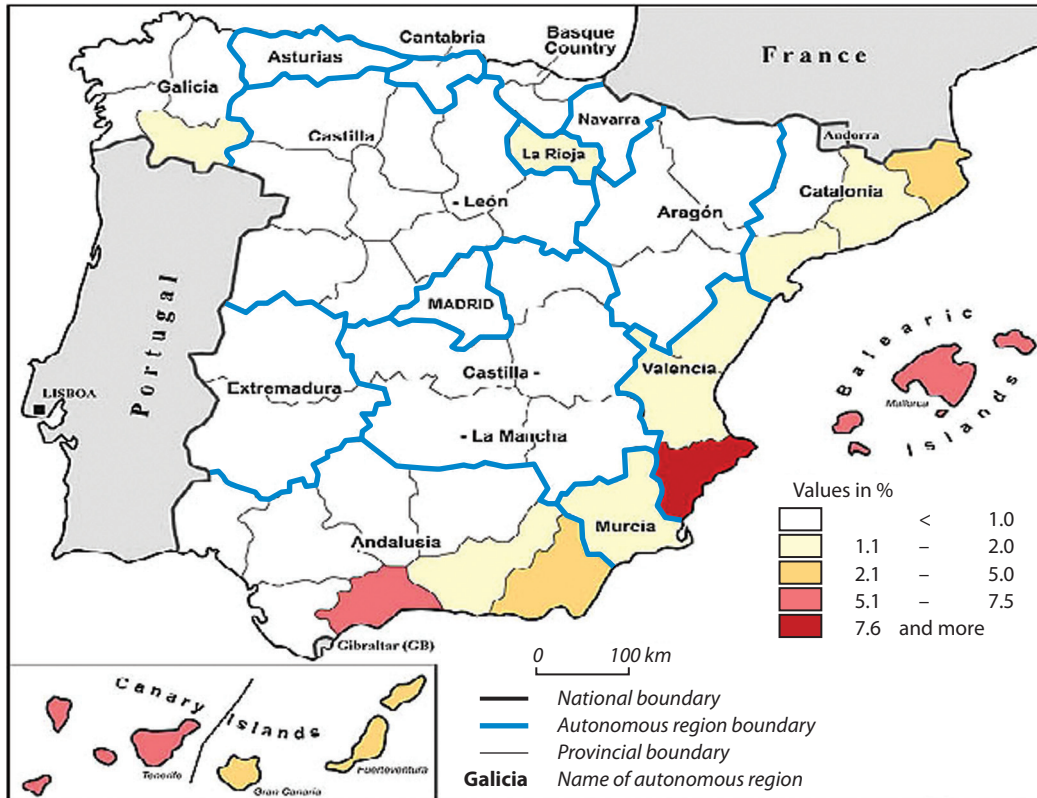


Figure 3 – Retirement migrants in Spain as a percentage of the total population

(a) Identify **one** feature of the distribution of retirement migrants.

(1)

(b) Explain why some people move to a different living space when they retire.

(3)

.....

.....

.....

.....

.....

.....

.....

.....

.....

.....



(c) Explain why the quality of living spaces in some rural areas is under increasing pressure.

(4)

.....

.....

.....

.....

.....

.....

.....

.....

.....

(Total for Question 3 = 8 marks)



Topic 4: Making a Living

4 Study Figure 4.



Figure 4 – Abandoned factories in Detroit, USA

(a) State **one** reason why a factory might be abandoned.

(1)

(b) Describe the negative impacts of de-industrialisation on the environment.

(3)



(c) Explain the factors that have led to diversification in some rural regions.

(4)

.....

.....

.....

.....

.....

.....

.....

.....

.....

.....

(Total for Question 4 = 8 marks)

TOTAL FOR SECTION A = 32 MARKS



SECTION B – SMALL-SCALE PEOPLE AND THE PLANET

Answer ONE question in this section.

Topic 5: Changing Cities

If you answer Question 5 put a cross in this box .

5 Study Figure 5.



Figure 5 – The logo for the ‘walking bus’, a scheme to encourage children to walk to school

(a) Identify **one** other method of reducing the use of cars.

(1)

(b) Outline **one** way in which transport can have a negative effect on the urban environment.

(2)

.....

.....

.....

.....

.....



*(c) For a named city, explain how it can reduce its energy consumption.

(6)

Named city

.....

.....

.....

.....

.....

.....

.....

.....

.....

.....

.....

.....

.....

.....

.....

.....

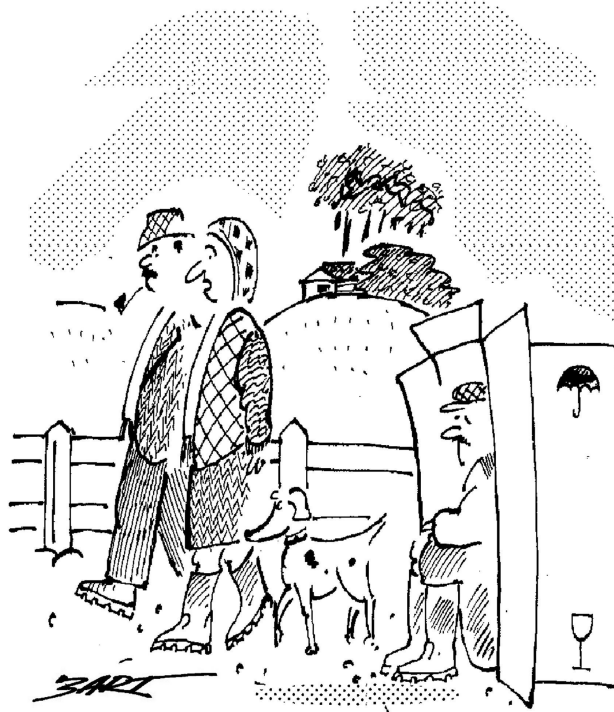
(Total for Question 5 = 9 marks)



Topic 6: Changing Countryside

If you answer Question 6 put a cross in this box .

6 Study Figure 6.



“Shame – a banker without a bonus who can’t afford a second home”

(Source: www.cartoonstock.com)

Figure 6 – A cartoon about second home owners

(a) Identify **one** negative impact of a rise in second home ownership.

(1)

(b) Outline **one** reason why some rural areas are becoming de-populated.

(2)



*(c) For a named **developing** country, explain the challenges faced by rural areas.

(6)

Named **developing** country

.....

.....

.....

.....

.....

.....

.....

.....

.....

.....

.....

.....

.....

.....

.....

.....

.....

.....

.....

.....

.....

.....

.....

(Total for Question 6 = 9 marks)

TOTAL FOR SECTION B = 9 MARKS



SECTION C – LARGE-SCALE PEOPLE AND THE PLANET

Answer ONE question in this section.

Topic 7: Development Dilemmas

If you answer Question 7 put a cross in this box .

7 Study Figure 7.

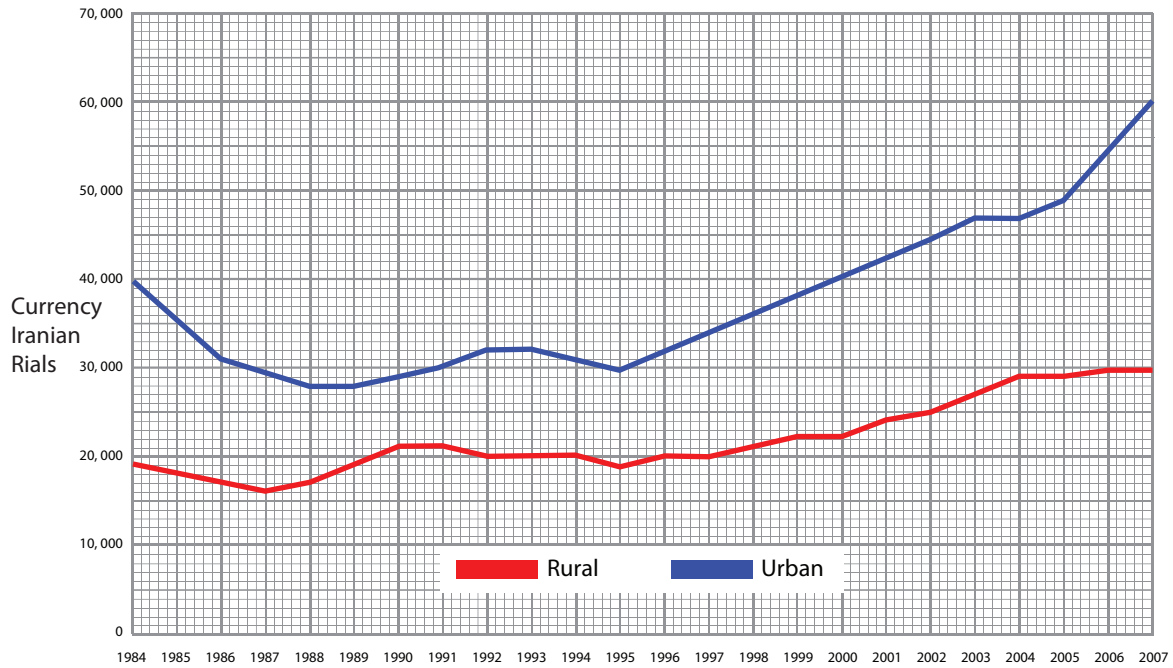


Figure 7 – Average urban and rural incomes in Iran, 1984 to 2007

(a) Describe the changes in the gap between urban and rural incomes.

(3)

.....

.....

.....

.....

.....

.....



* (b) For a named developing country, explain why 'bottom-up' development projects have both advantages and disadvantages.

(6)

Named developing country

.....

.....

.....

.....

.....

.....

.....

.....

.....

.....

.....

.....

.....

.....

.....

.....

.....

.....

.....

.....

.....

.....

.....

.....

(Total for Question 7 = 9 marks)



Topic 8: World of Work

If you answer Question 8 put a cross in this box .

8 Study Figure 8.

Should large companies have:

- more influence
- less influence
- keep influence the same

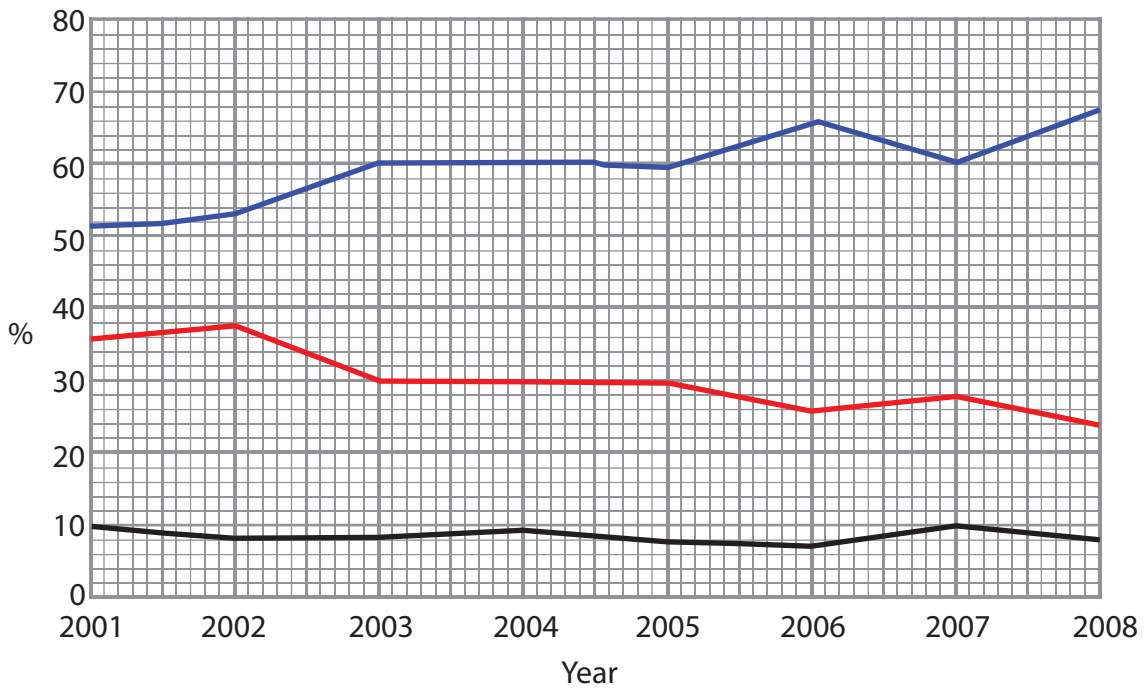


Figure 8 – Trends in the way people view large companies

(a) Describe the changes in views shown.

(3)

.....

.....

.....

.....

.....

.....



*(b) For a named Transnational Company (TNC), explain why it operates in different parts of the world.

(6)

Named TNC

.....

.....

.....

.....

.....

.....

.....

.....

.....

.....

.....

.....

.....

.....

.....

.....

.....

.....

.....

.....

.....

.....

.....

(Total for Question 8 = 9 marks)

TOTAL FOR SECTION C = 9 MARKS
TOTAL FOR PAPER = 50 MARKS



BLANK PAGE



BLANK PAGE



BLANK PAGE

