

Write your name here

Surname

Other names

Pearson
Edexcel GCSE

Centre Number

--	--	--	--	--	--

Candidate Number

--	--	--	--	--

Geography A

Unit 2: The Natural Environment

Foundation Tier

Tuesday 6 June 2017 – Afternoon
Time: 1 hour 15 minutes

Paper Reference

5GA2F/01

You do not need any other materials.

Total Marks

Instructions

- Use **black** ink or ball-point pen.
- **Fill in the boxes** at the top of this page with your name, centre number and candidate number.
- In Section **A** answer **all** questions.
- In Section **B** answer **either** question 4 **or** 5.
- Answer the questions in the spaces provided
– *there may be more space than you need.*

Information

- The total mark for this paper is 69.
- The marks for **each** question are shown in brackets
– *use this as a guide as to how much time to spend on each question.*
- Questions labelled with an **asterisk** (*) are ones where the quality of your written communication will be assessed
– *you should take particular care on these questions with your spelling, punctuation and grammar, as well as the clarity of expression.*
- The marks available for spelling, punctuation and grammar are clearly indicated.

Advice

- Read each question carefully before you start to answer it.
- Check your answers if you have time at the end.

Turn over ►

P48693A

©2017 Pearson Education Ltd.

1/1/1/1/1/1



Pearson

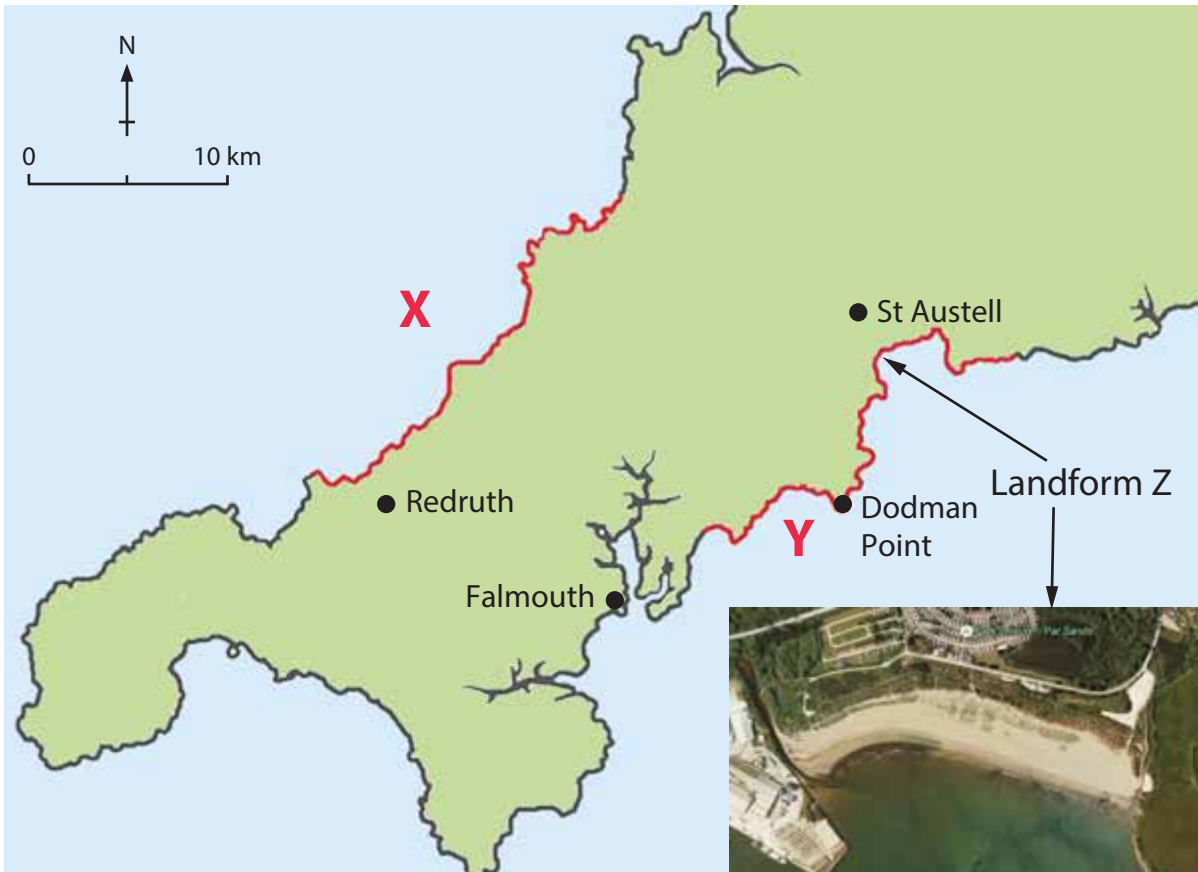
SECTION A – THE PHYSICAL WORLD

Answer ALL questions in this section.

Some questions must be answered with a cross in a box ☒. If you change your mind about an answer, put a line through the box ☒ and then mark your new answer with a cross ☒.

Topic 1: Coastal Landscapes

1 (a) Study Figure 1a.



(Source: © Google Earth)

Figure 1a

Two sections of coastline (X and Y) in Cornwall



(a) (i) Complete the following sentences about Figure 1a.

Use some of the words and letters below.

(4)

geology	Y	south west	headland	bay
X	north east	plants	north west	estuary

Coastline Y faces south-east whereas coastline X faces

the

Coastline has a straighter shape.

Dodman Point is an example of a

The shape of both coastlines has been strongly influenced

by

(ii) Landform Z is a

(1)

- A** spit
- B** arch
- C** beach
- D** stack

(b) (i) Which **one** of the following is a type of mass movement linked to cliff collapse?

(1)

- A** abrasion
- B** flooding
- C** attrition
- D** slumping

(ii) Which **one** of the following is an example of physical weathering?

(1)

- A** The breakdown of the cliff due to wind action.
- B** The breakdown of the cliff due to wave action.
- C** The breakdown of the cliff due to freezing and thawing of water.
- D** The breakdown of material due to constructive waves.



(c) Describe the management techniques used to protect a named area of coastline.

Named area of coastline

(4)

.....

.....

.....

.....

.....

.....

.....

.....

DO NOT WRITE IN THIS AREA

DO NOT WRITE IN THIS AREA

DO NOT WRITE IN THIS AREA



DO NOT WRITE IN THIS AREA

DO NOT WRITE IN THIS AREA

DO NOT WRITE IN THIS AREA

(d) Study Figure 1b.

Location	Average erosion rate (m/year)	Geology	Type of coastal defences
Seaford (Sussex)	0.14	Chalk	Rip rap and beach replenishment
Trimingham (Norfolk)	1.5	Boulder clay	Wooden revetments, groynes and concrete sea wall

Figure 1b

Information about two coastal locations in England

Using information from Figure 1b and your own knowledge, outline **two** ways geology affects erosion rate.

(4)

1

.....

.....

.....

.....

.....

.....

.....

2

.....

.....

.....

.....

.....

.....

(Total for Question 1 = 15 marks)



Topic 2: River Landscapes

2 (a) Study Figure 2.

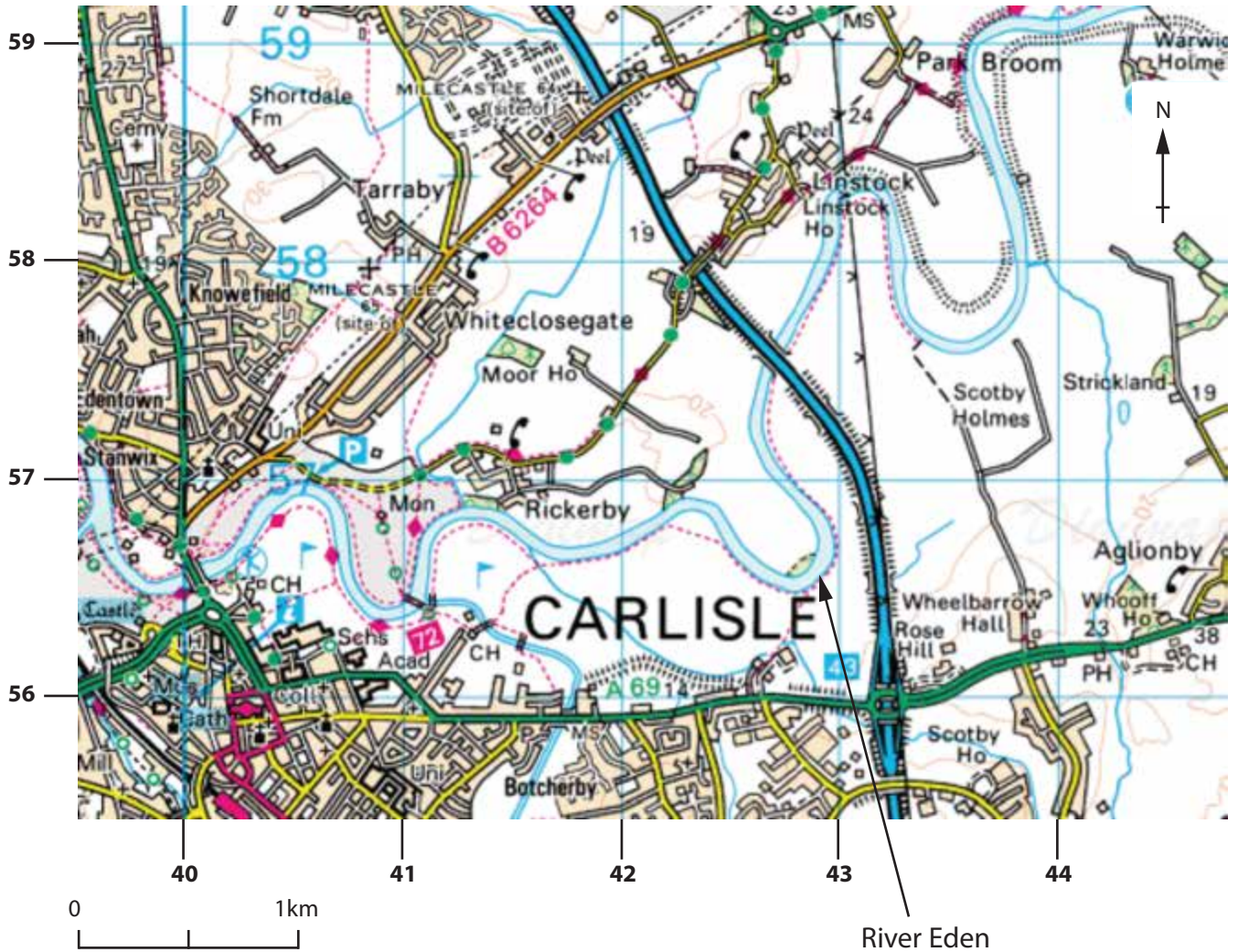


Figure 2

Ordnance Survey (OS) map extract of River Eden flowing through Cumbria



DO NOT WRITE IN THIS AREA

DO NOT WRITE IN THIS AREA

DO NOT WRITE IN THIS AREA

(a) (i) Complete the following sentences about Figure 2.

Use some of the words below.

(4)

meander	mouth	floodplain	confluence	source
oxbow lake	watershed	flooding	drought	waterfall

In grid square 4357 there is a in the River Eden.

Much of the area around the river is a flat

There is a where a tributary joins the River Eden in grid square 4156.

The site of Carlisle means that it is at risk from

(ii) The meander in grid square 4256 could develop into

(1)

- A** an oxbow lake
- B** a waterfall
- C** a plunge pool
- D** a levee

(b) (i) Which **one** of the following is a soft engineering technique?

(1)

- A** channelisation
- B** flood relief channels
- C** dam
- D** flood plain zoning

(ii) Define the term **washlands**.

(1)

.....

.....



(c) Draw an annotated diagram(s) to explain the formation of a levee.

(4)

DO NOT WRITE IN THIS AREA

DO NOT WRITE IN THIS AREA

DO NOT WRITE IN THIS AREA



(d) Using examples, describe the effects of river flooding on people.

(4)

DO NOT WRITE IN THIS AREA

DO NOT WRITE IN THIS AREA

DO NOT WRITE IN THIS AREA

DO NOT WRITE IN THIS AREA

DO NOT WRITE IN THIS AREA

DO NOT WRITE IN THIS AREA

DO NOT WRITE IN THIS AREA

DO NOT WRITE IN THIS AREA

DO NOT WRITE IN THIS AREA

DO NOT WRITE IN THIS AREA

(Total for Question 2 = 15 marks)



Topic 3: Tectonic Landscapes

3 (a) (i) Which **one** of the following best describes the earthquake focus? (1)

- A** The point under the surface where the crust breaks.
- B** The damage caused by the shaking.
- C** The point on the surface with the most damage.
- D** The build-up of tension in the earth's crust.

(ii) Which **one** of the following is an environmental impact of tectonic activity? (1)

- A** buildings collapse
- B** loss of transport links
- C** fires damage woodlands
- D** government debt

DO NOT WRITE IN THIS AREA

DO NOT WRITE IN THIS AREA

DO NOT WRITE IN THIS AREA



(b) Study Figure 3a.



Figure 3a

A cartoon about the Haiti earthquake in 2010

Complete the following sentences about Figure 3a.

Use some of the words below.

(4)

rebuilt cleared time rich modern
developed collapsed poor money survived

Figure 3a shows that before the earthquake, Haiti was

a country.

The earthquake caused deaths and many
buildings

After the earthquake, homes were using
similar construction materials.

People continue to live in places like Haiti because they don't have
enough to move to a safer area.



(c) Study Figure 3b.



(Source: © Volcano-Adventures / VolcanoDiscovery, Inh. Tom Pfeiffer)

Figure 3b

A volcano on a convergent (destructive) plate boundary

(i) Which **one** of the following types of volcano is found on a convergent (destructive) plate boundary?

(1)

- A** hotspot
- B** composite
- C** shield
- D** fissure



(ii) Outline **two** other characteristic physical features found on a convergent (destructive) plate boundary.

(4)

1

.....

.....

.....

2

.....

.....

.....

(d) Outline the effects of **either** a named volcanic eruption **or** an earthquake.

(4)

Named volcanic eruption **or** earthquake

.....

.....

.....

.....

.....

.....

.....

.....

.....

.....

.....

(Total for Question 3 = 15 marks)

TOTAL FOR SECTION A = 45 MARKS

DO NOT WRITE IN THIS AREA

DO NOT WRITE IN THIS AREA

DO NOT WRITE IN THIS AREA



SECTION B – ENVIRONMENTAL ISSUES

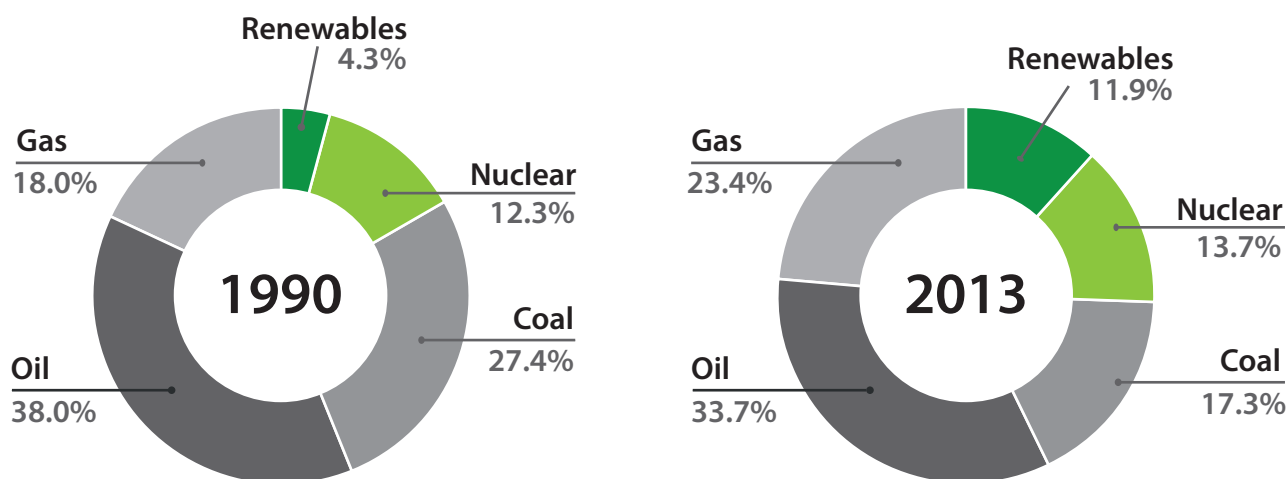
Answer EITHER Question 4 OR Question 5.

Topic 4: A Wasteful World

Spelling, punctuation and grammar will be assessed in 4*(e).

If you answer Question 4 put a cross in this box .

4 (a) Study Figure 4a.



(Source: <http://www.carbonbrief.org/seven-charts-showing-how-the-eus-energy-use-is-being-transformed>)

Figure 4a

The EU energy mix in 1990 and 2013

- (i) Which **one** of the following energy types decreased between 1990 and 2013? (1)
- A gas
 - B renewables
 - C nuclear
 - D oil
- (ii) Which **one** of the following describes the change in use of coal from 1990 to 2013? (1)
- A increased by 9.9%
 - B decreased by 10.1%
 - C increased by 10.5%
 - D decreased by 11.0%



(iii) Suggest **one** reason for the change in use of coal shown in Figure 4a.

(2)

.....

.....

.....

.....

(b) Explain **two** ways a country's energy consumption is affected by income and wealth.

(4)

1

.....

.....

.....

2

.....

.....

.....

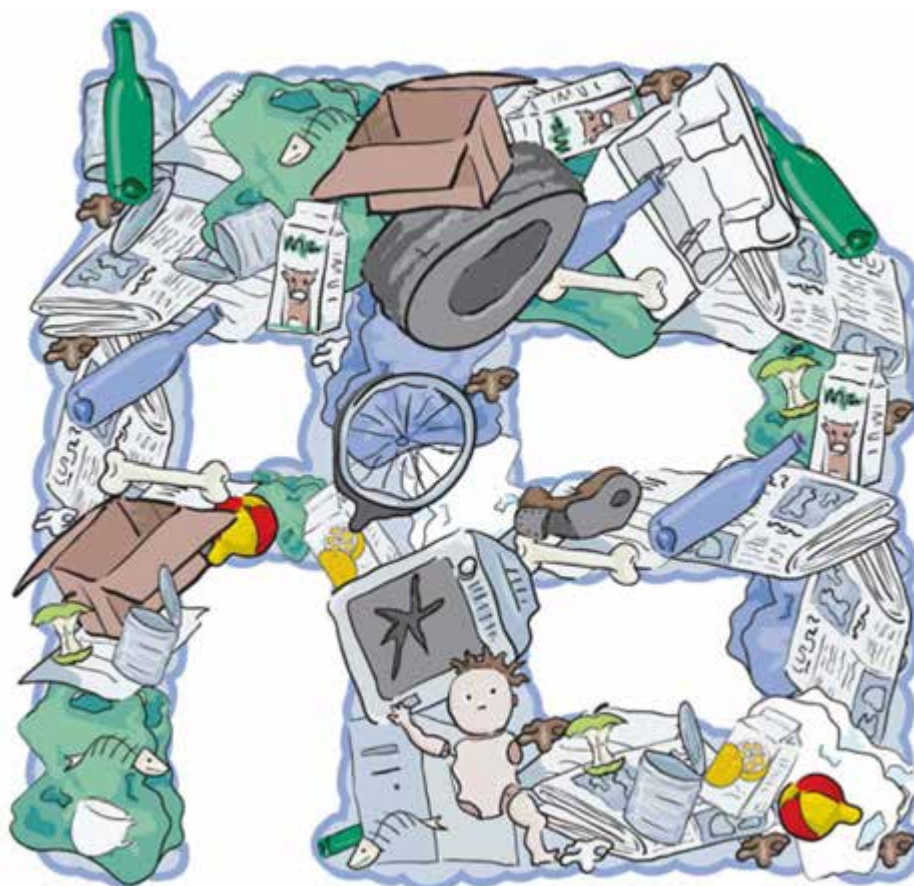
DO NOT WRITE IN THIS AREA

DO NOT WRITE IN THIS AREA

DO NOT WRITE IN THIS AREA



(c) Study Figure 4b.



(Source: © Meriel Jane Weissman/Getty Images)

Figure 4b

Examples of domestic waste in a High Income Country (HIC)

(i) A refrigerator could be classified as

(1)

- A** renewable waste
- B** food waste
- C** garden waste
- D** electrical waste

(ii) Describe **one** benefit of recycling the waste shown in Figure 4b.

(1)

.....

.....



(d) Describe the methods used to recycle waste on a local scale.

Use examples in your answer.

(4)

.....

.....

.....

.....

.....

.....

.....

.....

DO NOT WRITE IN THIS AREA

DO NOT WRITE IN THIS AREA

DO NOT WRITE IN THIS AREA



***(e)** Explain the reasons for the different attitudes towards the exploitation of a named non-renewable energy source.

(6)

Named non-renewable energy source

.....

.....

.....

.....

.....

.....

.....

.....

.....

.....

.....

.....

.....

.....

.....

.....

.....

.....

.....

.....

.....

.....

.....

(Total for spelling, punctuation and grammar = 4 marks)
(Total for Question 4 = 24 marks)

DO NOT WRITE IN THIS AREA

DO NOT WRITE IN THIS AREA

DO NOT WRITE IN THIS AREA



DO NOT WRITE IN THIS AREA

DO NOT WRITE IN THIS AREA

DO NOT WRITE IN THIS AREA

BLANK PAGE
QUESTION 5 BEGINS ON THE FOLLOWING PAGE.



Topic 5: A Watery World

Spelling, punctuation and grammar will be assessed in 5*(e).

If you answer Question 5 put a cross in this box .

5 (a) Study Figure 5a.

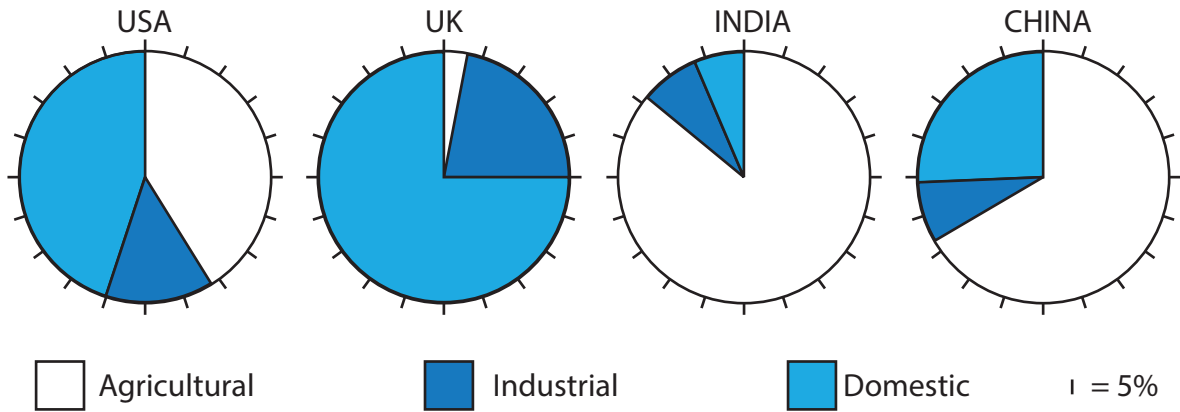


Figure 5a

Water consumption in selected countries by sector, 2011

- (i) Which country used the largest percentage of water consumption in agriculture? (1)
- A USA
 - B UK
 - C India
 - D China
- (ii) Which **one** of the following statements best describes the water consumption shown in Figure 5a? (1)
- A The USA had a smaller percentage of domestic consumption than India.
 - B China had a smaller percentage of industrial consumption than the USA.
 - C India had a larger percentage of domestic consumption than the UK.
 - D The UK had a smaller percentage of industrial consumption than China.

DO NOT WRITE IN THIS AREA

DO NOT WRITE IN THIS AREA

DO NOT WRITE IN THIS AREA



(iii) Suggest **one** reason for the differences in water consumption by agriculture.

(2)

.....

.....

.....

.....

(b) Explain **two** ways in which water supply in High Income Countries (HICs) is affected by rainfall.

(4)

1

.....

.....

.....

2

.....

.....

.....

DO NOT WRITE IN THIS AREA

DO NOT WRITE IN THIS AREA

DO NOT WRITE IN THIS AREA



(c) Study Figure 5b.

Method X



Method Y



(Source: thewaterproject.org/images/hand_dug.jpg)

Figure 5b

Two appropriate technologies to manage water in Low Income Countries (LICs)

(i) Which **one** of the following is Method X?

(1)

- A** gravity-fed scheme
- B** water filter
- C** hand dug well
- D** water recycling

(ii) Describe **one** reason why a water pump (Method Y) is an appropriate technology to manage water in LICs.

(1)

.....

.....

DO NOT WRITE IN THIS AREA

DO NOT WRITE IN THIS AREA

DO NOT WRITE IN THIS AREA



(d) Describe how water use is managed by industry in HICs.

Use examples in your answer.

(4)

.....

.....

.....

.....

.....

.....

.....

.....

DO NOT WRITE IN THIS AREA

DO NOT WRITE IN THIS AREA

DO NOT WRITE IN THIS AREA



