

Write your name here

Surname

Other names

**Pearson**  
**Edexcel GCSE**

Centre Number

--	--	--	--	--

Candidate Number

--	--	--	--	--

# Geography A

## Unit 2: The Natural Environment

**Higher Tier**

Wednesday 8 June 2016 – Afternoon  
**Time: 1 hour 15 minutes**

Paper Reference  
**5GA2H/01**

**You do not need any other materials.**

Total Marks

### Instructions

- Use **black** ink or ball-point pen.
- **Fill in the boxes** at the top of this page with your name, centre number and candidate number.
- In Section **A** answer **all** questions.
- In Section **B** answer **either** question 4 **or** 5.
- Answer the questions in the spaces provided  
– *there may be more space than you need.*

### Information

- The total mark for this paper is 69.
- The marks for **each** question are shown in brackets  
– *use this as a guide as to how much time to spend on each question.*
- Questions labelled with an **asterisk** (\*) are ones where the quality of your written communication will be assessed  
– *you should take particular care on these questions with your spelling, punctuation and grammar, as well as the clarity of expression.*
- The marks available for spelling, punctuation and grammar are clearly indicated.

### Advice

- Read each question carefully before you start to answer it.
- Check your answers if you have time at the end.

Turn over ►

P46467A

©2016 Pearson Education Ltd.

1/1/1/1/1/e2



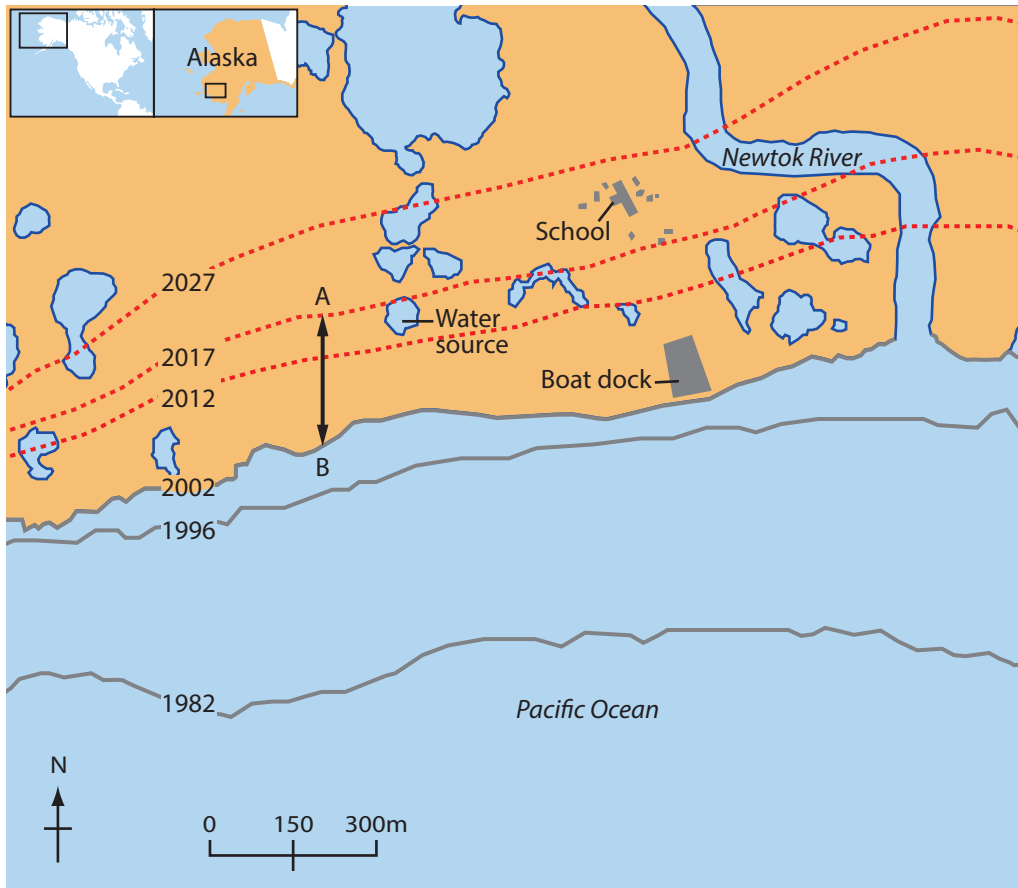
**PEARSON**

**SECTION A – THE PHYSICAL WORLD**

**Answer ALL questions in this Section.**

**Topic 1: Coastal Landscapes**

**1** Study Figure 1a.



- Coastline position
- ..... Projected coastline position
- ▭ Fresh water
- Buildings

**Figure 1a**

**The past and projected coastline at Newtok, Alaska 2002.**

DO NOT WRITE IN THIS AREA

DO NOT WRITE IN THIS AREA

DO NOT WRITE IN THIS AREA



DO NOT WRITE IN THIS AREA

DO NOT WRITE IN THIS AREA

DO NOT WRITE IN THIS AREA

(a) (i) Figure 1a shows a rapidly receding coastline.

What is the distance between points A and B?

(1)

..... metres

(ii) Suggest how the rapid recession of this coastline has an impact on both people and the environment.

(4)

.....

.....

.....

.....

.....

.....

.....

.....

.....

.....

(b) Outline the processes of weathering and mass movement on the coast.

(4)

.....

.....

.....

.....

.....

.....

.....

.....

.....

.....



\* (c) Using located examples, explain how the effects of coastal flooding are reduced by forecasting and planning.

(6)

.....

.....

.....

.....

.....

.....

.....

.....

.....

.....

.....

.....

.....

.....

.....

.....

.....

.....

.....

.....

.....

.....

.....

.....

.....

**(Total for Question 1 = 15 marks)**

DO NOT WRITE IN THIS AREA

DO NOT WRITE IN THIS AREA

DO NOT WRITE IN THIS AREA



**Topic 2: River Landscapes**

2 (a) Define the following drainage basin terms:

(2)

Confluence

.....  
.....

Watershed

.....  
.....

DO NOT WRITE IN THIS AREA

DO NOT WRITE IN THIS AREA

DO NOT WRITE IN THIS AREA



(b) Study Figure 2a.



**Figure 2a**

**A photograph of river landforms in Iceland**

Identify a river landform in Figure 2a.

Describe the role of erosion in the formation of your chosen landform.

(3)

Chosen river landform .....

.....

.....

.....

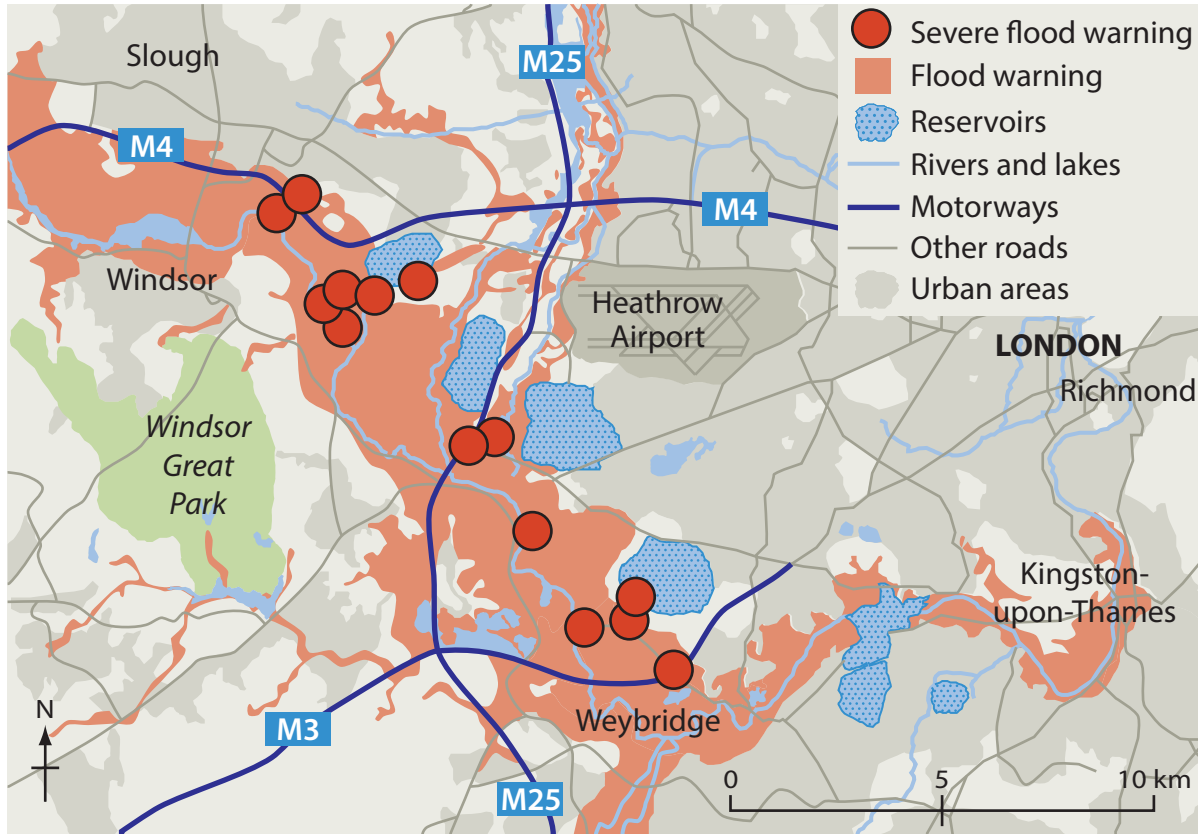
.....

.....

.....



(c) Study Figure 2b.



**Figure 2b**

**Flood warnings around south west London, February 2014**

Using Figure 2b, suggest the impacts of the possible flooding on people.

(4)

.....

.....

.....

.....

.....

.....

.....

.....

.....



\***(d)** Explain the advantages of different engineering methods used to manage rivers in the UK.

**(6)**

.....

.....

.....

.....

.....

.....

.....

.....

.....

.....

.....

.....

.....

.....

.....

.....

.....

.....

.....

.....

.....

.....

.....

.....

.....

**(Total for Question 2 = 15 marks)**

DO NOT WRITE IN THIS AREA

DO NOT WRITE IN THIS AREA

DO NOT WRITE IN THIS AREA





DO NOT WRITE IN THIS AREA

DO NOT WRITE IN THIS AREA

DO NOT WRITE IN THIS AREA

**BLANK PAGE**  
**QUESTION 3 BEGINS ON THE NEXT PAGE.**



### Topic 3: Tectonic Landscapes

3 (a) Describe the global distribution of earthquakes.

(2)

Study Figure 3a.

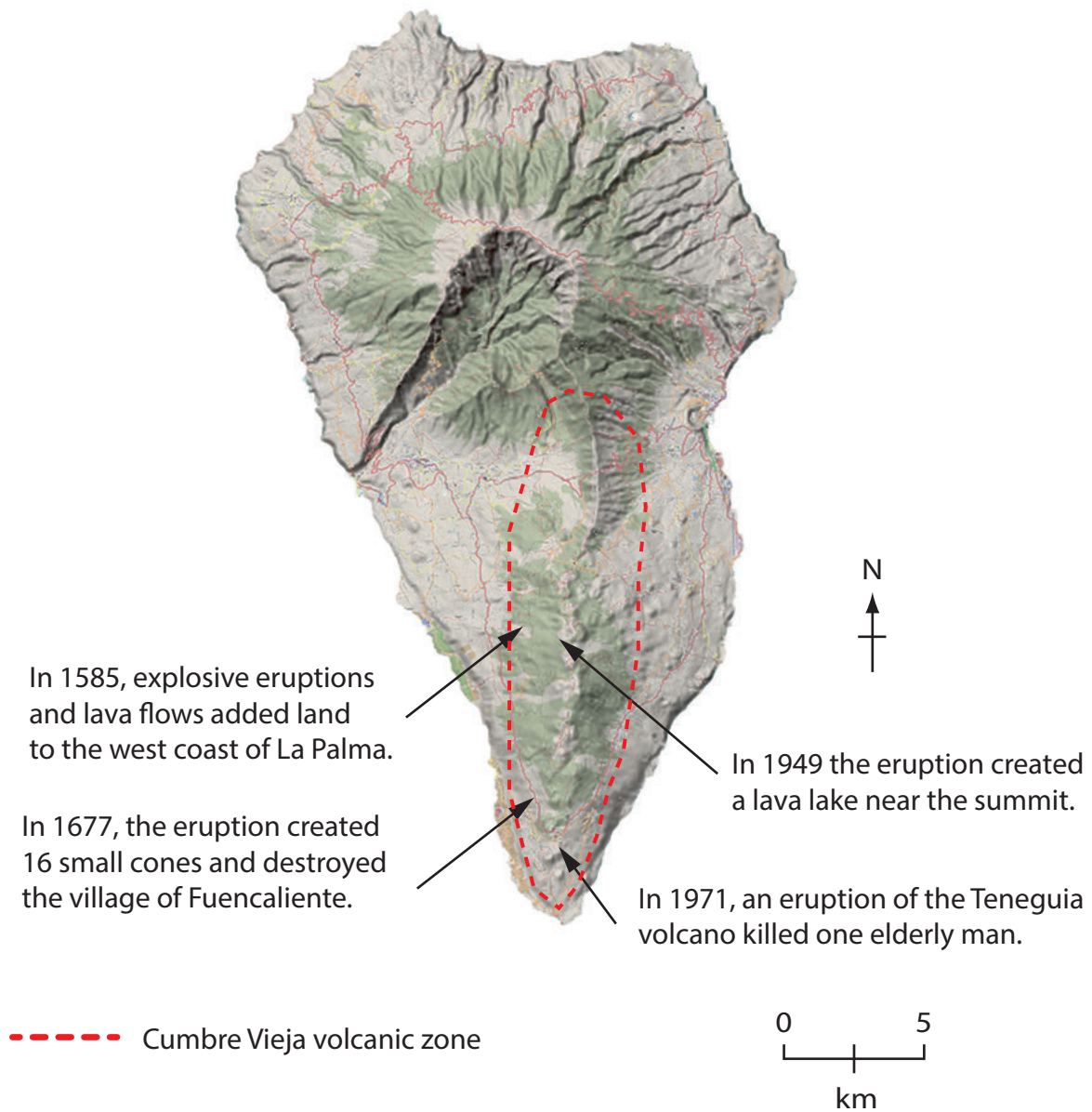


Figure 3a

Map showing some of the historic eruptions on the island of La Palma, Canary Islands

DO NOT WRITE IN THIS AREA

DO NOT WRITE IN THIS AREA

DO NOT WRITE IN THIS AREA



(b) Using Figure 3a, describe the impact of this volcanic activity on the environment.

(3)

.....

.....

.....

.....

.....

.....

(c) Use an annotated diagram(s) to explain the formation of a hotspot (volcanic island).

(4)

DO NOT WRITE IN THIS AREA

DO NOT WRITE IN THIS AREA

DO NOT WRITE IN THIS AREA



DO NOT WRITE IN THIS AREA

DO NOT WRITE IN THIS AREA

DO NOT WRITE IN THIS AREA

\***(d)** Using located examples, explain the economic and social reasons why people continue to live in areas of earthquake activity.

**(6)**

.....

.....

.....

.....

.....

.....

.....

.....

.....

.....

.....

.....

.....

.....

.....

**(Total for Question 3 = 15 marks)**

**TOTAL FOR SECTION A = 45 MARKS**



DO NOT WRITE IN THIS AREA

DO NOT WRITE IN THIS AREA

DO NOT WRITE IN THIS AREA

**BLANK PAGE**  
**SECTION B BEGINS ON THE NEXT PAGE.**



**SECTION B – ENVIRONMENTAL ISSUES**

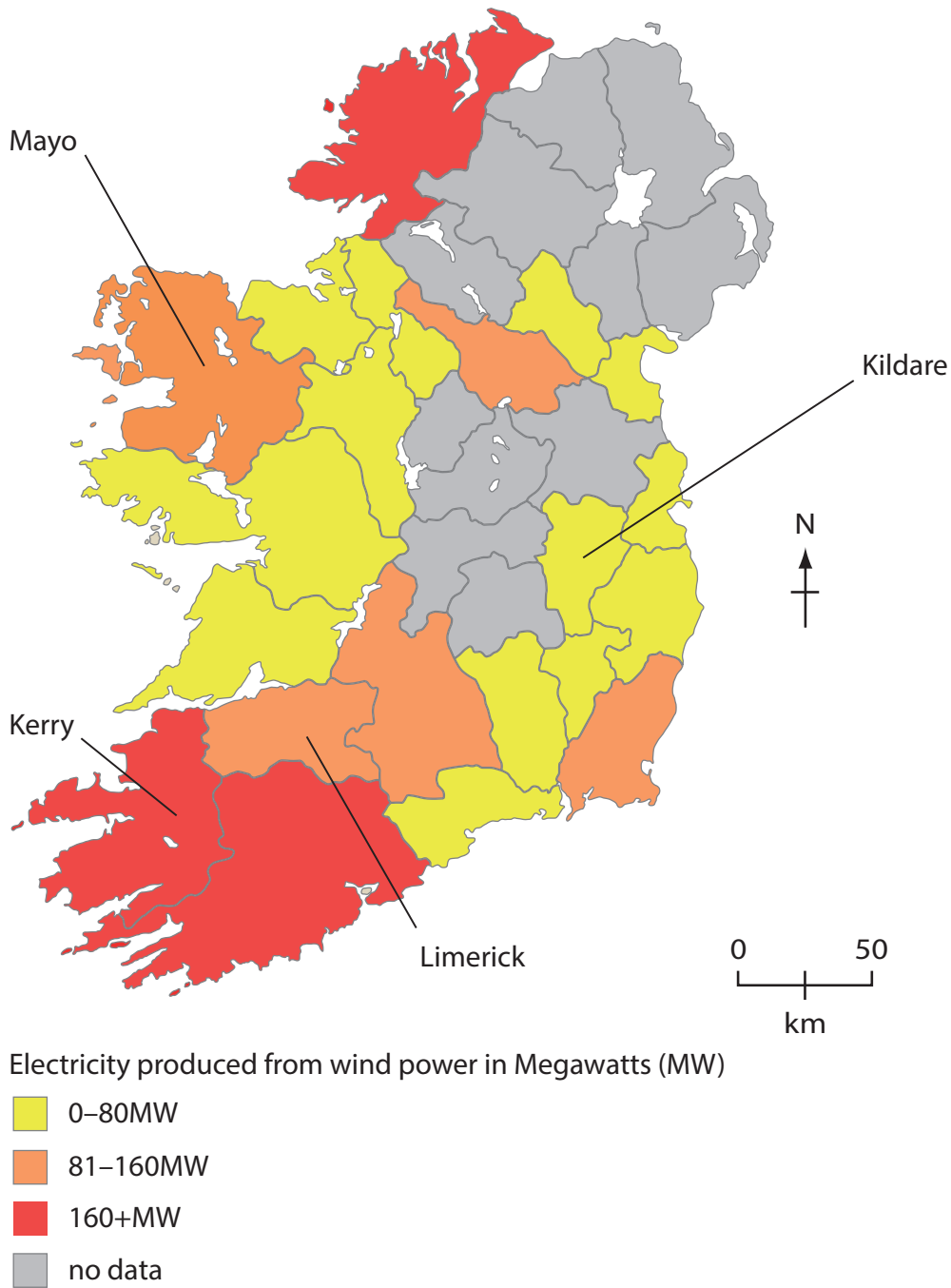
**Answer EITHER Question 4 OR Question 5.**

**Topic 4: A Wasteful World**

**Spelling, punctuation and grammar will be assessed in 4\*(e)**

**If you answer Question 4 put a cross in the box  .**

**4** Study Figure 4a.



(Source: © Copyright Guardian News & Media Ltd 2012)

**Figure 4a**

**Electricity (MW) produced from wind energy in selected Irish counties, 2012**

DO NOT WRITE IN THIS AREA

DO NOT WRITE IN THIS AREA

DO NOT WRITE IN THIS AREA



DO NOT WRITE IN THIS AREA

DO NOT WRITE IN THIS AREA

DO NOT WRITE IN THIS AREA

(a) Suggest reasons for the pattern shown in Figure 4a.

(3)

.....

.....

.....

.....

.....

.....

(b) Explain the attitudes of individuals and governments to the use of renewable energy resources.

(4)

.....

.....

.....

.....

.....

.....

.....

.....

.....



(c) Study Figure 4b.

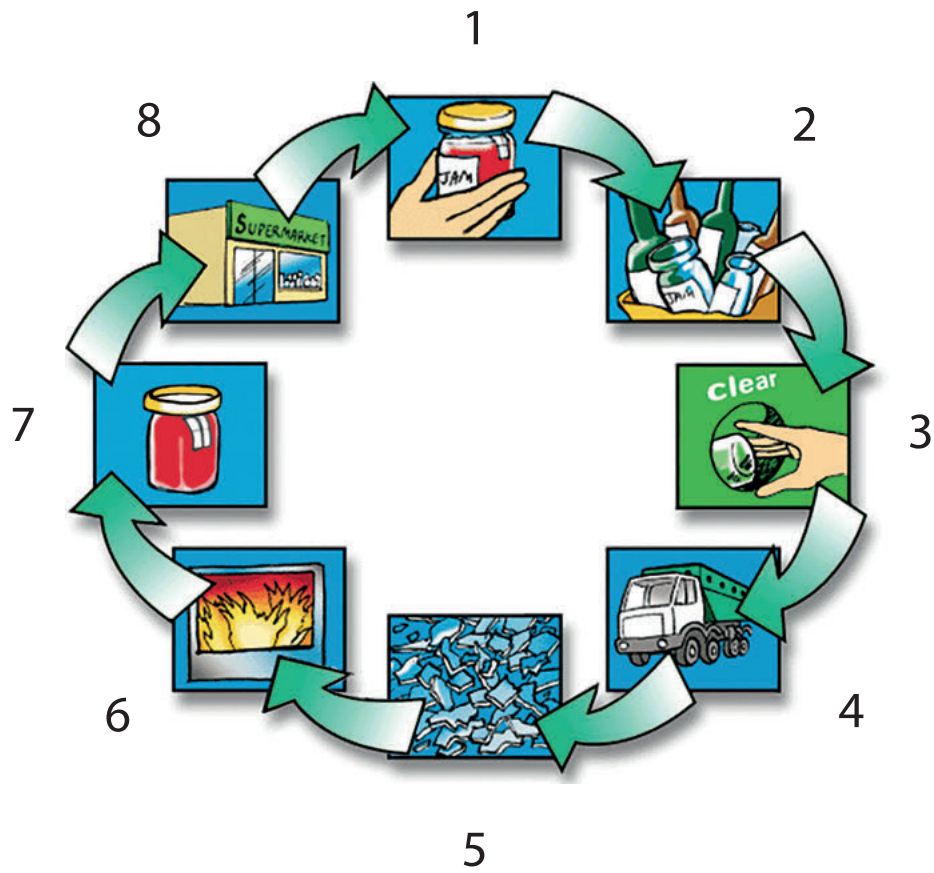


Figure 4b

The process of glass recycling on a local scale

Outline **one** advantage of recycling materials such as glass.

(3)

.....

.....

.....

.....

.....

.....

DO NOT WRITE IN THIS AREA

DO NOT WRITE IN THIS AREA

DO NOT WRITE IN THIS AREA





DO NOT WRITE IN THIS AREA

DO NOT WRITE IN THIS AREA

DO NOT WRITE IN THIS AREA

(d) Explain why a named High Income Country (HIC) uses different methods to dispose of its solid waste.

(4)

Named HIC .....

.....

.....

.....

.....

.....

.....

.....

.....

.....



\*(e) Examine the reasons for variations in carbon footprints between countries.

(6)

.....

.....

.....

.....

.....

.....

.....

.....

.....

.....

.....

.....

.....

.....

.....

.....

.....

.....

.....

.....

.....

.....

.....

**(Total for spelling, punctuation and grammar = 4 marks)**  
**(Total for Question 4 = 24 marks)**

DO NOT WRITE IN THIS AREA

DO NOT WRITE IN THIS AREA

DO NOT WRITE IN THIS AREA



Topic 5: A Watery World

Spelling, punctuation and grammar will be assessed in 5\*(e).

If you answer Question 5 put a cross in the box  .

5 Study Figure 5a.

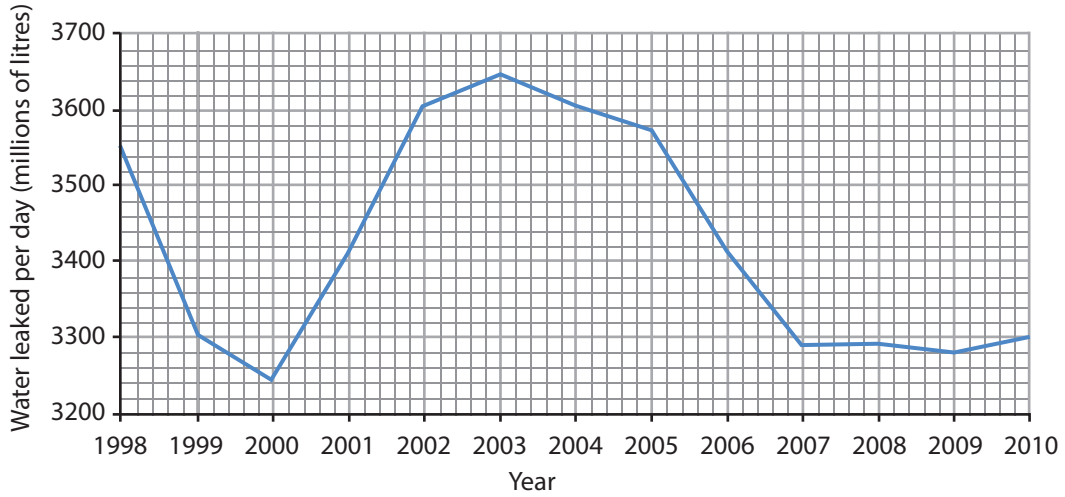


Figure 5a

Water leaked per day (millions of litres) in the UK, 1998–2010

(a) Suggest reasons for water leakages shown in Figure 5a.

(3)

.....

.....

.....

.....

.....

.....

DO NOT WRITE IN THIS AREA

DO NOT WRITE IN THIS AREA

DO NOT WRITE IN THIS AREA



(b) Explain **two** reasons for water supply problems in HICs.

(4)

.....

.....

.....

.....

.....

.....

.....

.....

DO NOT WRITE IN THIS AREA

DO NOT WRITE IN THIS AREA

DO NOT WRITE IN THIS AREA



(c) Study Figure 5b.

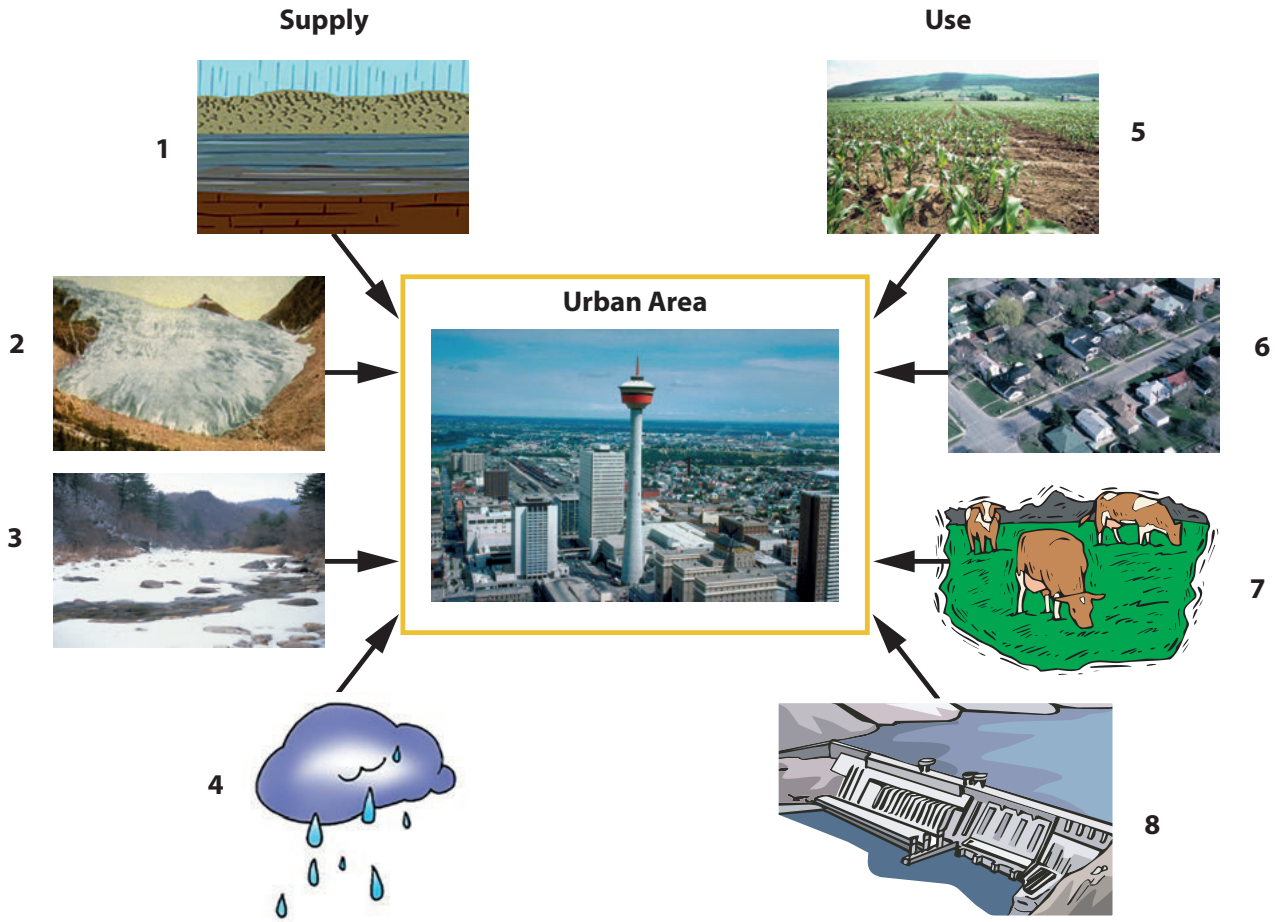


Figure 5b

Water supply and use in a large city and the surrounding area

Outline **one** way water use is managed in an urban area.

(3)

.....

.....

.....

.....

.....

.....



(d) Using examples, explain the different methods used to obtain water on a local scale.

(4)

.....

.....

.....

.....

.....

.....

.....

.....

DO NOT WRITE IN THIS AREA

DO NOT WRITE IN THIS AREA

DO NOT WRITE IN THIS AREA



DO NOT WRITE IN THIS AREA

\*(e) Examine the reasons for the increasing demand for water in HICs.

(6)

Handwriting practice area with horizontal dotted lines.

**(Total for spelling, punctuation and grammar = 4 marks)**

**(Total for Question 5 = 24 marks)**

**TOTAL FOR SECTION B = 24 MARKS**

**TOTAL FOR PAPER = 69 MARKS**



P 4 6 4 6 7 A 0 2 3 2 4

DO NOT WRITE IN THIS AREA

DO NOT WRITE IN THIS AREA

DO NOT WRITE IN THIS AREA

**BLANK PAGE**

Every effort has been made to contact copyright holders to obtain their permission for the use of copyright material. Pearson Education Ltd. will, if notified, be happy to rectify any errors or omissions and include any such rectifications in future editions.

