

Write your name here

Surname

Other names

Centre Number

Candidate Number

Edexcel GCSE

Geography A

Unit 2: The Natural Environment

Higher Tier

Friday 25 January 2013 – Morning

Time: 1 hour

Paper Reference

5GA2H/01

You must have:

Resource Booklet (enclosed)

Total Marks

Instructions

- Use **black** ink or ball-point pen.
- **Fill in the boxes** at the top of this page with your name, centre number and candidate number.
- In Section **A** answer only **one** question from questions 1, 2, 3 **or** 4.
- In Section **B** answer **either** question 5 **or** 6.
- Answer the questions in the spaces provided
– *there may be more space than you need.*

Information

- The total mark for this paper is 53.
- The marks for **each** question are shown in brackets
– *use this as a guide as to how much time to spend on each question.*
- Questions labelled with an **asterisk** (*) are ones where the quality of your written communication will be assessed.
- The marks available for spelling, punctuation and grammar are clearly indicated.

Advice

- Read each question carefully before you start to answer it.
- Keep an eye on the time.
- Check your answers if you have time at the end.

Turn over ►

P41347A

©2013 Pearson Education Ltd.

6/8/6/6



PEARSON

SECTION A – THE PHYSICAL WORLD

Answer only ONE question from Section A.

Indicate which question you are answering by marking a cross . If you change your mind, put a line through the box and then indicate your new question with a cross .

Topic 1: Coastal Landscapes

If you answer Question 1 put a cross in this box

1 (a) Study Figure 1a (photograph) in the Resource Booklet.

It shows Poole Harbour, Dorset.

(i) Name landform **A** shown on Figure 1a.

(1)

(ii) Outline the process of longshore drift.

You may use evidence from Figure 1a in your answer.

(3)

.....

.....

.....

.....

.....

.....

.....

.....

.....

.....



(b) Describe how building design and planning can reduce the effects of coastal flooding.

Use examples in your answer.

(4)

.....

.....

.....

.....

.....

.....

.....

.....

.....



(c) Study Figure 1b.

It shows erosion rates at four sites (A–D) along a coastline.

Each site has a different type of coastal management.

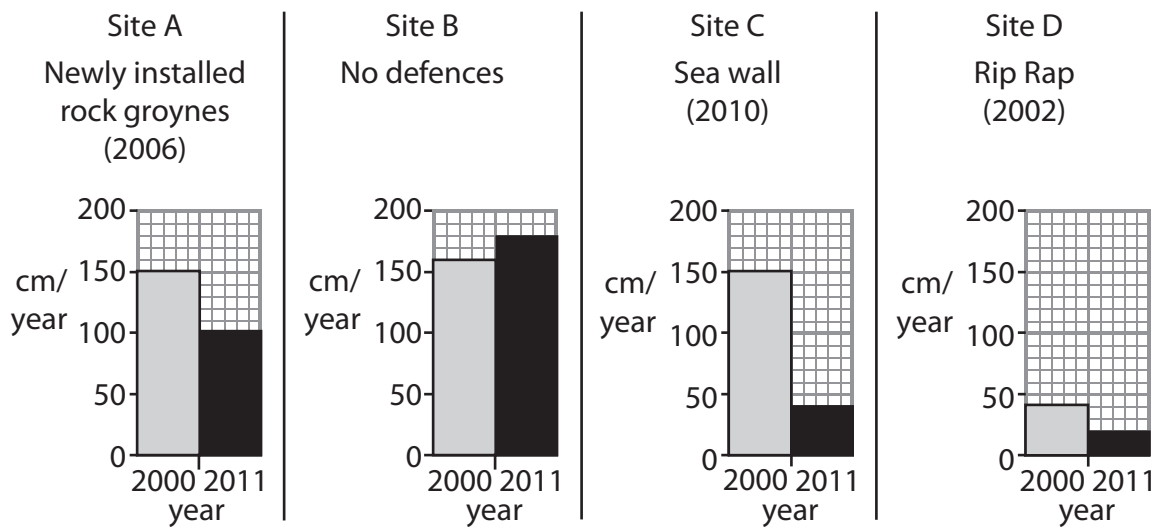


Figure 1b

(i) Describe the changes in erosion rate along the coastline shown in Figure 1b.

Use erosion rate data (cm/year) in your answer.

(4)

.....

.....

.....

.....

.....

.....

.....

.....

.....

.....

.....

.....

.....

.....

.....

.....

.....

.....

.....

.....

.....

.....

.....



(ii) Outline how geology affects the rate of coastal recession.

(3)

.....

.....

.....

.....

.....

(iii) Explain the advantages and disadvantages of offshore reefs as a method of coastal defence.

(4)

.....

.....

.....

.....

.....

.....

.....

.....

.....



(d) Choose a study of a coastal area.

Explain how this area is managed.

(6)

Chosen study

Ruled area for writing the answer to the question.

(Total for Question 1 = 25 marks)



Topic 2: River Landscapes

If you answer Question 2 put a cross in this box

2 (a) Study Figure 2a (photograph) in the Resource Booklet.

It shows flooding in Australia.

(i) Name an area that was not flooded on Figure 2a.

(1)

(ii) Describe the effects of flooding on people and the environment in the area shown on Figure 2a.

Use evidence from Figure 2a in your answer.

(3)

(iii) Outline how urbanisation increases the risk of flooding.

(3)



(iv) Describe how building design and planning can reduce the effects of flooding.

Use examples in your answer.

(4)

.....

.....

.....

.....

.....

.....

.....

.....

(b) Study Figure 2b.

It is a graph showing the change in velocity downstream along the River Peris, Wales.

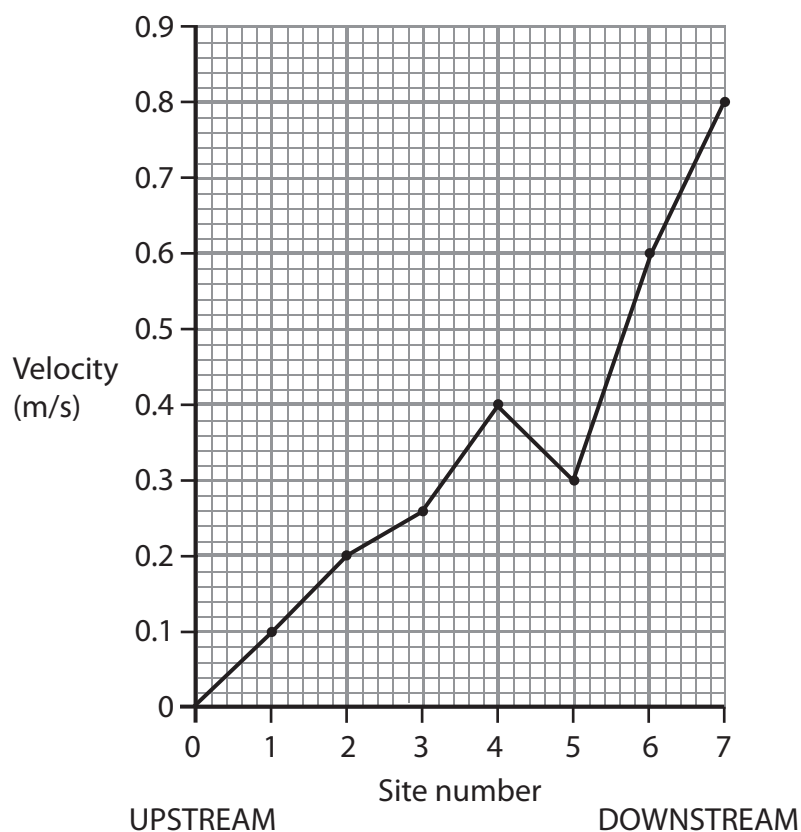


Figure 2b



(i) Describe the changes in velocity shown in Figure 2b.

Use velocity data (m/s) in your answer.

(4)

Ruled area for writing the answer to question (i).

(ii) Explain how discharge and gradient change with distance downstream.

(4)

Ruled area for writing the answer to question (ii).



(c) Choose a study of a river.

Explain how this river is managed.

(6)

Chosen study

A series of horizontal dotted lines for writing the answer.

(Total for Question 2 = 25 marks)



Topic 3: Glaciated Landscapes

If you answer Question 3 put a cross in this box

3 (a) Study Figure 3a (photograph) in the Resource Booklet.

It shows upland glacial features near Mount Everest.

(i) Name landform **Z** shown on Figure 3a.

(1)

(ii) Describe the other upland glacial landforms shown on Figure 3a.

Use evidence from Figure 3a in your answer.

(3)

(iii) Outline how ground moraine is formed.

(3)



(iv) Explain how people use glaciated landscapes.

Use examples in your answer.

(4)

.....

.....

.....

.....

.....

.....

.....

.....

.....

(b) Study Figure 3b.

It shows changes in temperature in a glaciated area.

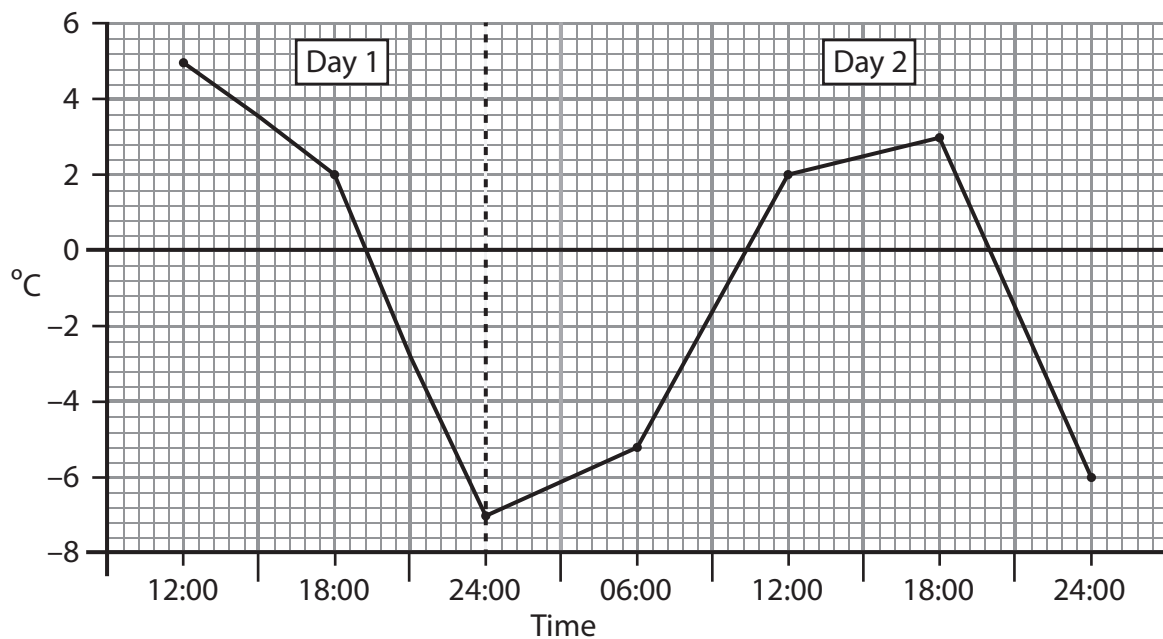


Figure 3b



(i) Describe the changes in temperature shown on Figure 3b.

Use temperature data (°C) in your answer.

(3)

.....

.....

.....

.....

.....

.....

(ii) What type of weathering is caused by the temperature changes shown in Figure 3b?

(1)

.....

(iii) Explain the difference between lodgement and ablation.

(4)

.....

.....

.....

.....

.....

.....

.....

.....

.....

.....

.....

.....

.....

.....

.....

.....

.....

.....

.....

.....

.....

.....

.....

.....



Topic 4: Tectonic Landscapes

If you answer Question 4 put a cross in this box

4 (a) Study Figure 4a (map) in the Resource Booklet.

It shows the distribution of earthquakes in the Christchurch area, New Zealand, in 2010.

(i) How many earthquakes of magnitude 7–8 are shown on Figure 4a? (1)

(ii) Describe the distribution of earthquakes shown in Figure 4a.

Use map evidence in your answer. (3)

(iii) Outline how earthquakes are caused. (3)



(b) Explain why people in High Income Countries (HICs) continue to live in areas affected by volcanoes.

Use examples in your answer.

(4)

.....

.....

.....

.....

.....

.....

.....

.....

.....

.....

(c) Study Figure 4b.

It shows the number of earthquakes in the world between 1990 and 2006.

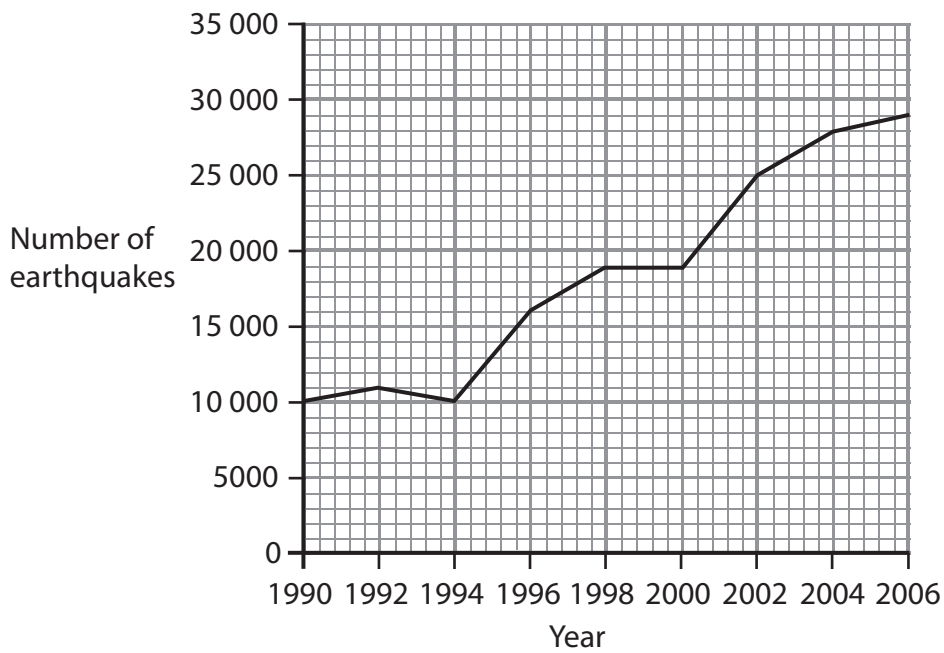


Figure 4b



Describe the trend shown in Figure 4b.

Use earthquake data in your answer.

(4)

.....

.....

.....

.....

.....

.....

.....

.....

.....

(d) Explain **two** characteristic features of convergent plate boundaries.

(4)

.....

.....

.....

.....

.....

.....

.....

.....

.....



(e) Choose a study of an earthquake or a volcanic eruption.

Explain the effects of this event.

(6)

Chosen study

.....
.....
.....
.....
.....
.....
.....
.....
.....
.....
.....
.....
.....
.....
.....
.....
.....
.....
.....
.....
.....

(Total for Question 4 = 25 marks)

TOTAL FOR SECTION A = 25 MARKS



BLANK PAGE

Section B is on the next page



SECTION B – ENVIRONMENTAL ISSUES

Answer EITHER Question 5 OR Question 6.

Topic 5: A Wasteful World

If you answer Question 5 put a cross in this box

Spelling, punctuation and grammar will be assessed in *(d).

5 (a) Study Figure 5a.

It shows the waste produced per person in the UK between 2000 and 2007.

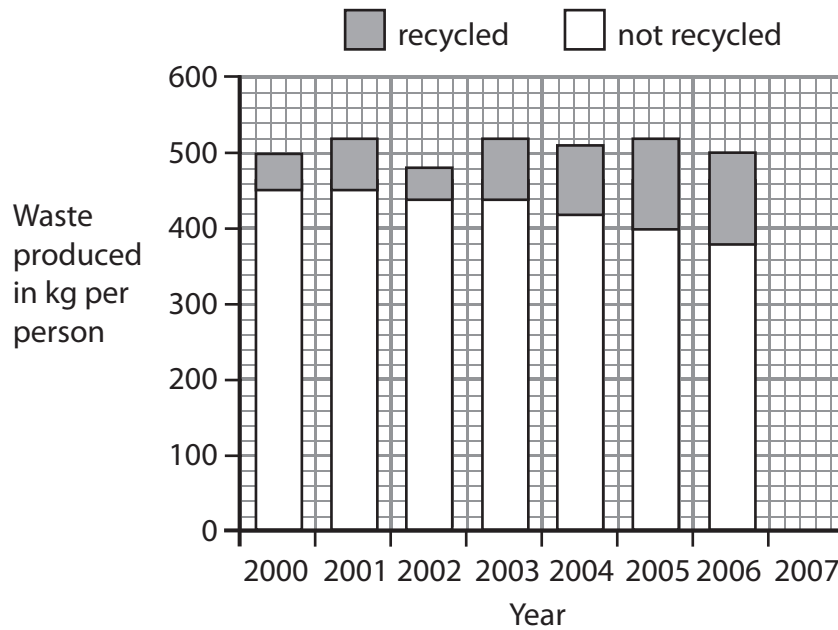


Figure 5a

(i) Complete Figure 5a for 2007.

Use the data in the table below.

(2)

Type of waste	kg per person
Not recycled	350
Recycled	150



(ii) What do the terms 'recycling waste' and 'reusing waste' mean?

Use an example in your answer.

(3)

.....

.....

.....

.....

.....

.....

.....

.....

.....

(iii) Outline the differences in waste production between High Income Countries (HICs) and Low Income Countries (LICs).

(4)

.....

.....

.....

.....

.....

.....

.....

.....

.....



(b) Study Figure 5b.

It shows global energy consumption per person for 2010.

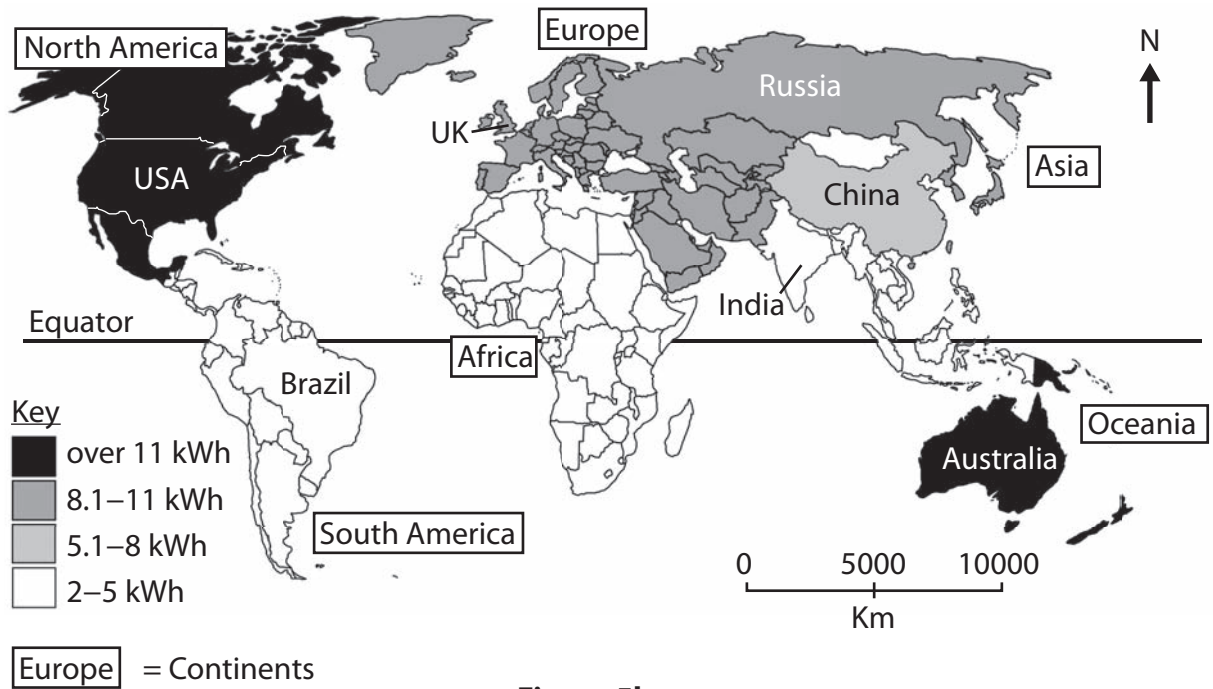


Figure 5b

(i) What is the energy consumption per person in:

(2)

Australia kWh

India kWh

(ii) Describe the distribution of energy consumption shown in Figure 5b.

Use energy consumption data (kWh per person) in your answer.

(4)

.....

.....

.....

.....

.....

.....

.....

.....

.....

.....



(c) Explain how industry wastes energy.

(4)

.....

.....

.....

.....

.....

.....

.....

.....



* (d) Explain the solutions to energy wastage in the UK.

Use examples in your answer.

(6)

Area with horizontal dotted lines for writing the answer.

(Total for spelling, punctuation and grammar = 3 marks)

(Total for Question 5 = 28 marks)



BLANK PAGE

Question 6 is on the next page



Topic 6: A Watery World

If you answer Question 6 put a cross in this box

Spelling, punctuation and grammar will be assessed in *(e).

6 (a) Study Figure 6a.

It shows the percentage (%) of total water supply from groundwater (aquifers) for water companies in England.

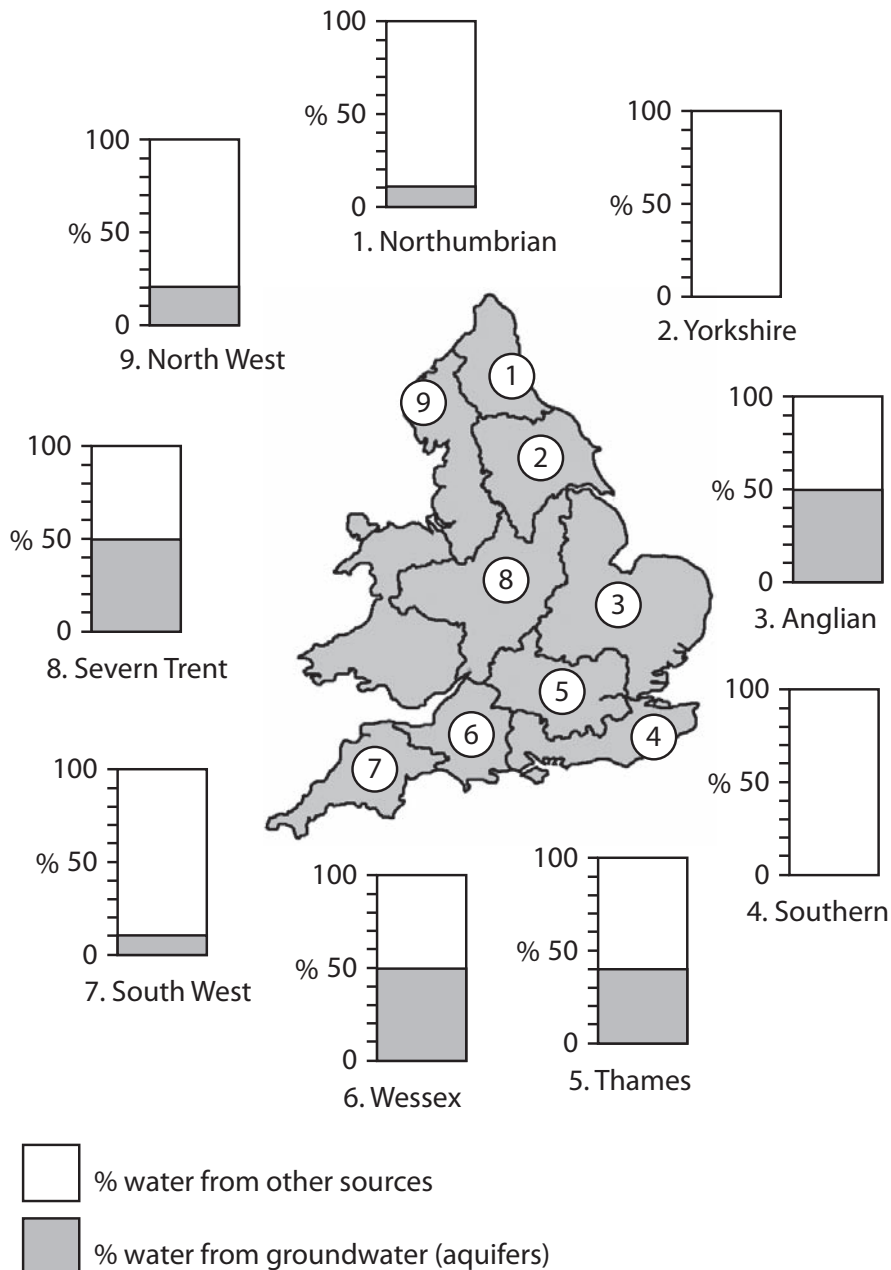


Figure 6a



(i) Complete Figure 6a for the Southern and Yorkshire water companies.

Use the data in the table below.

(2)

Water company	% water from groundwater (aquifers)
Southern	70
Yorkshire	20

(ii) Describe the distribution of water supply from groundwater shown on Figure 6a.

Use groundwater data (%) in your answer.

(4)

.....

.....

.....

.....

.....

.....

.....

.....

.....

.....

(b) Suggest reasons for the imbalance of rainfall and population between the north and the south of the UK.

(4)

.....

.....

.....

.....

.....

.....

.....

.....

.....

.....



(c) Outline the variation in water consumption between High Income Countries (HICs) and Low Income Countries (LICs).

(4)

.....

.....

.....

.....

.....

.....

.....

.....

.....



(d) Study Figure 6b.

It shows the number of deaths from cholera after the Haiti earthquake.

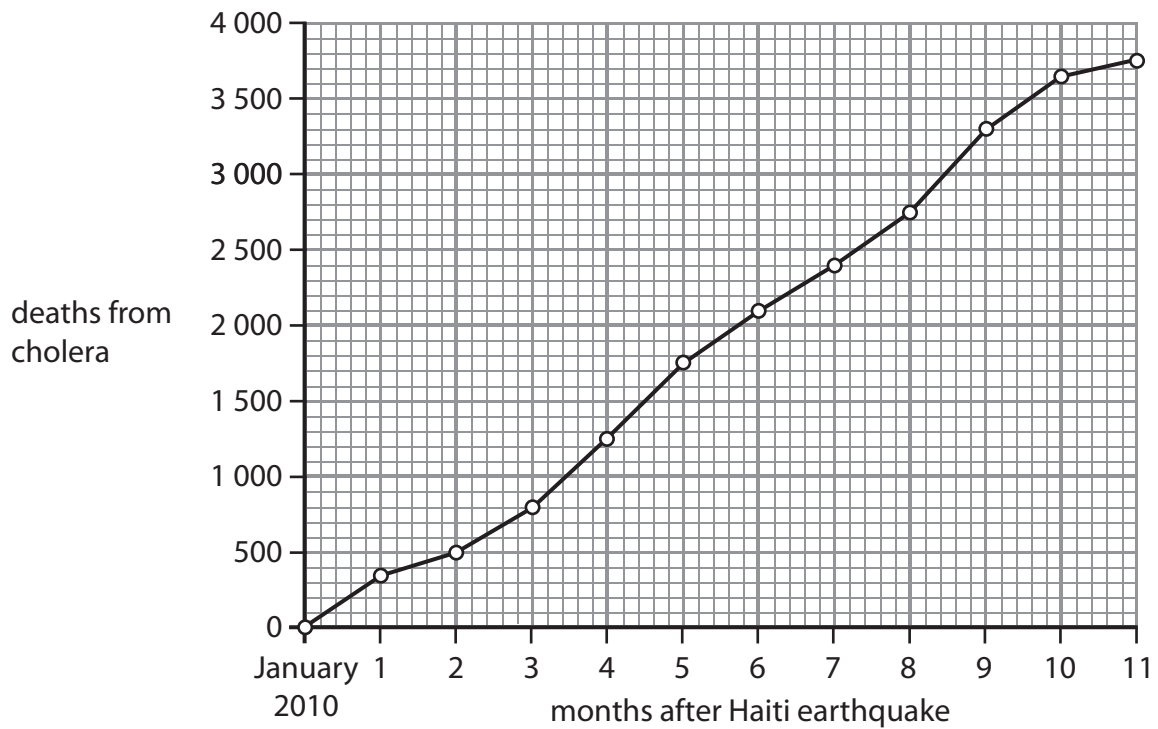


Figure 6b

(i) How many deaths from cholera were there?

(2)

4 months after the earthquake

11 months after the earthquake

(ii) Suggest reasons why people in LICs suffer from water-borne diseases.

(3)

.....

.....

.....

.....

.....

.....

.....



* (e) Explain how water usage can be managed in HICs.

Use examples in your answer.

(6)

Dotted lines for writing the answer.

(Total for spelling, punctuation and grammar = 3 marks)

(Total for Question 6 = 28 marks)

TOTAL FOR SECTION B = 28 MARKS

TOTAL FOR PAPER = 53 MARKS



BLANK PAGE



BLANK PAGE



Edexcel GCSE

Geography A

Unit 2: The Natural Environment

Paper 2F and 2H

Friday 25 January 2013 – Morning
Resource Booklet

Paper Reference

5GA2F/01

5GA2H/01

Do not return the resource booklet with the question paper.

Information

This Resource Booklet contains maps and photographs needed for use with the Unit 2: The Natural Environment examination.

This Resource Booklet is for use with both foundation and higher tiers.

Turn over ►

P41346A

©2013 Pearson Education Ltd.

6/8/6/6



PEARSON

SECTION A – THE PHYSICAL WORLD

Topic 1: Coastal Landscapes



Figure 1a

Topic 2: River Landscapes

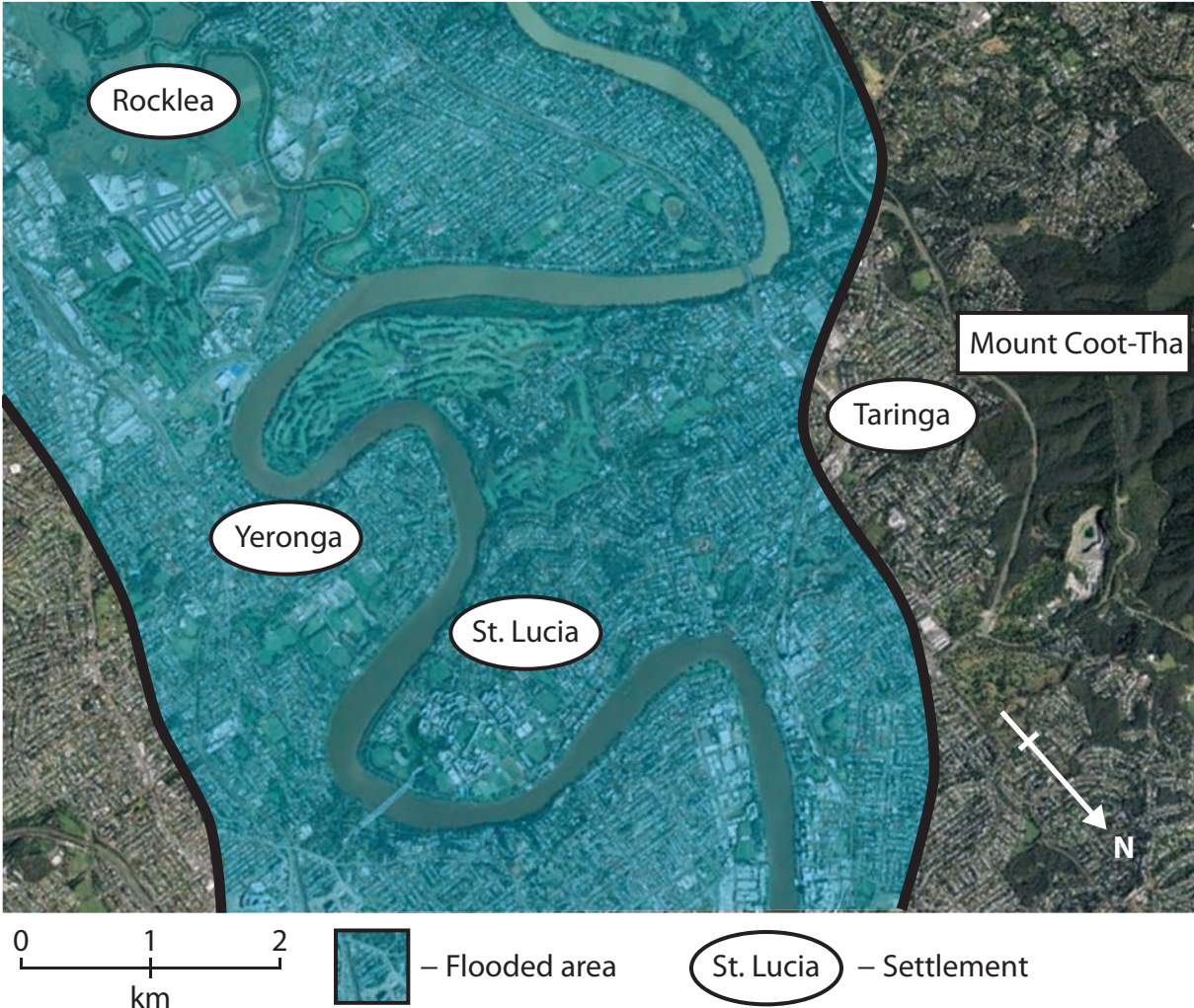


Figure 2a

Topic 3: Glaciated Landscapes

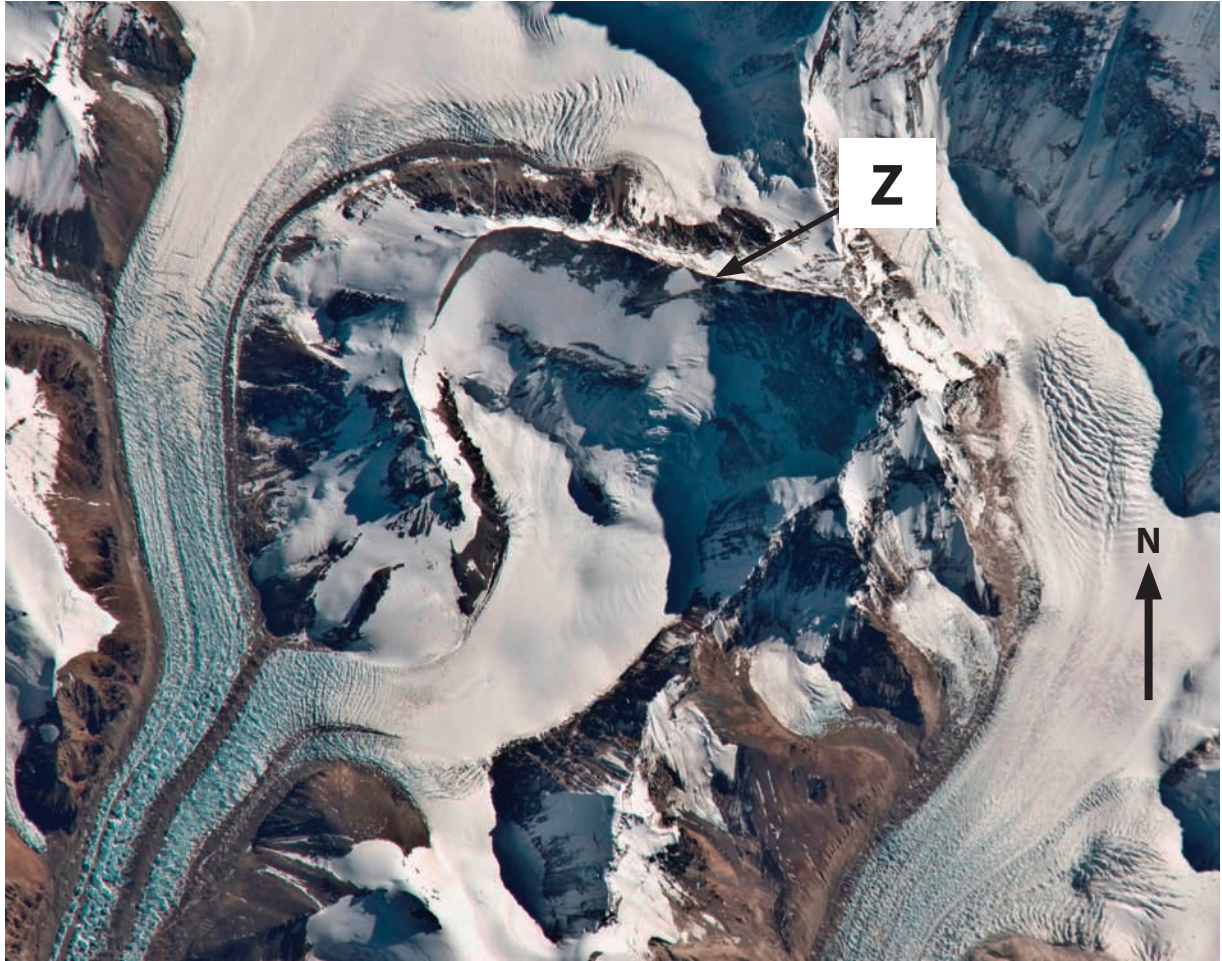


Figure 3a

Topic 4: Tectonic Landscapes

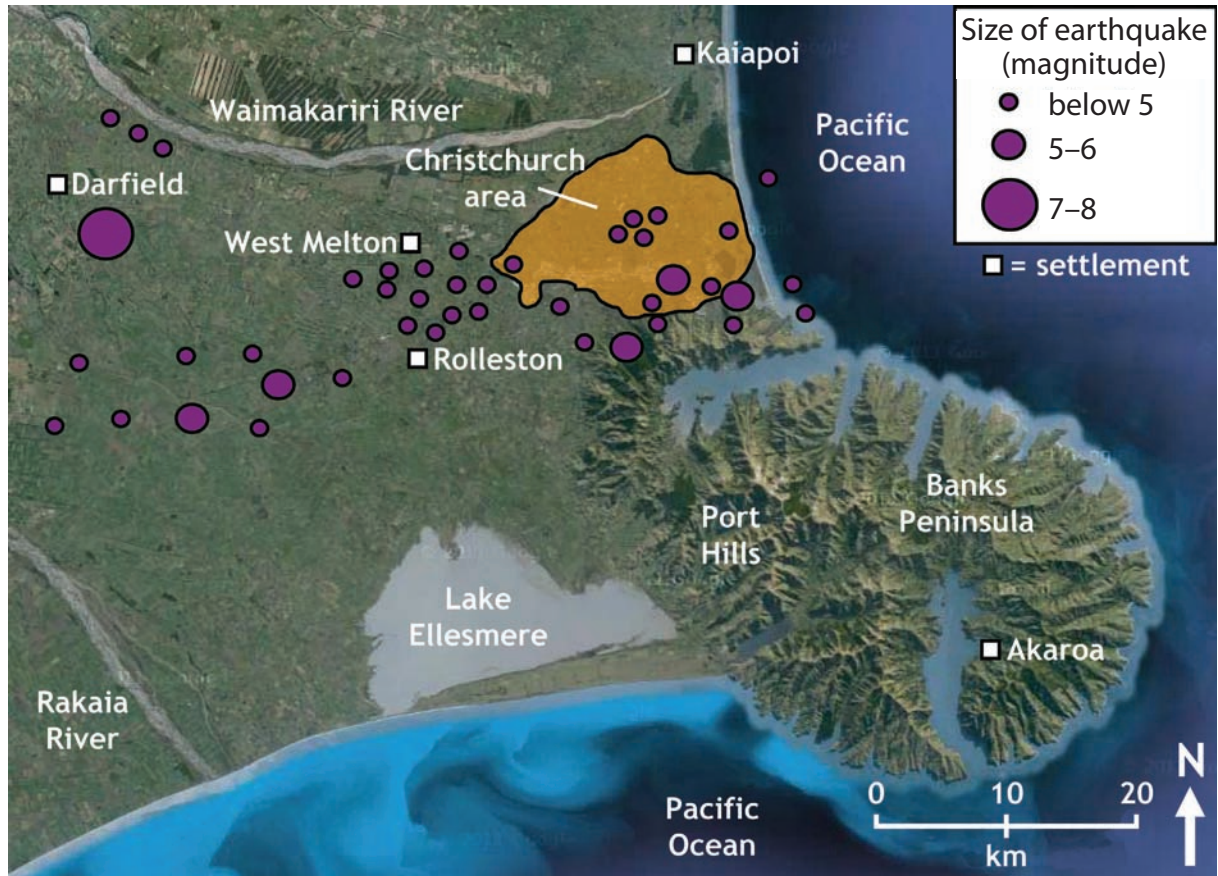


Figure 4a

BLANK PAGE

BLANK PAGE

BLANK PAGE