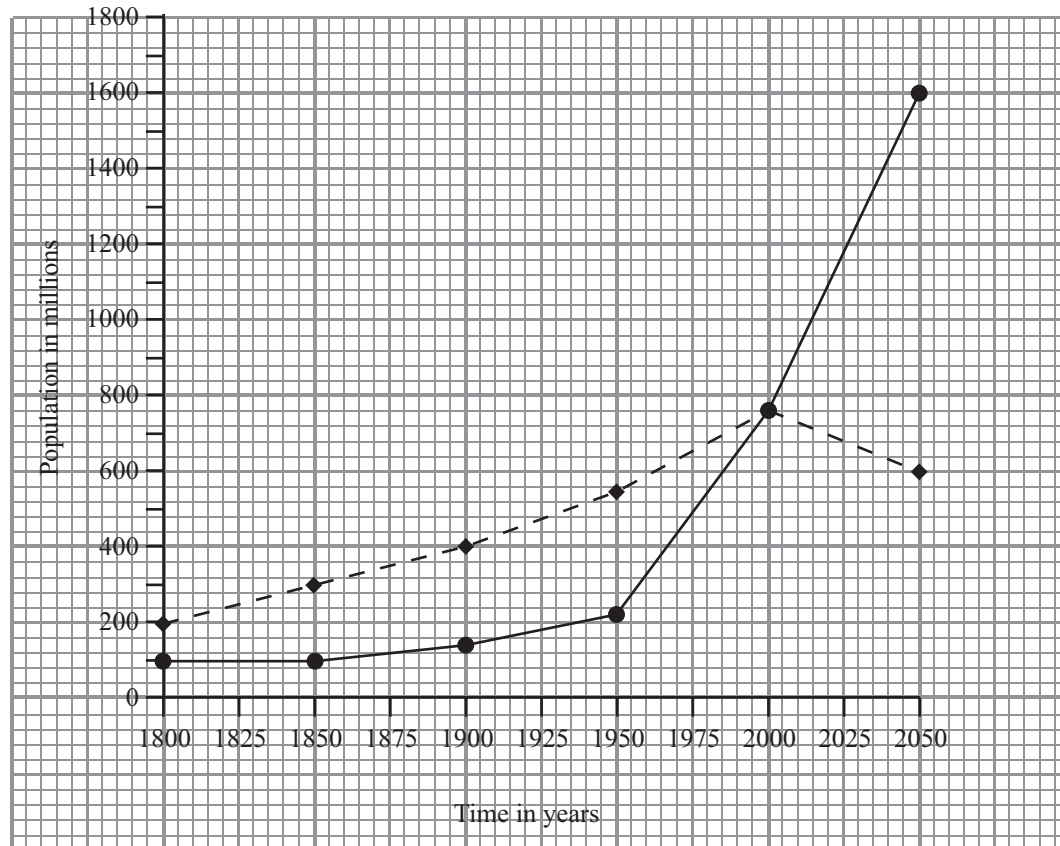


Answer all the questions. Write your answers in the spaces provided.

1. (a) Look at Figure 1a. It shows population growth for Europe and Africa.

**Population growth in Europe and Africa
1800-projected 2050**



Key
 - ♦ - Europe
 — ● — Africa

Figure 1a

(i) What was the population of Europe in 1800?
million (1)

(ii) In which year were the populations of Europe and Africa the same?
 (1)

(iii) In which year was the population of Europe three times the population of Africa?
Circle the correct answer.
 1850 1900 2000 2050 (1)



(iv) Cross out the **wrong** words in the paragraph below.

The population of Europe after 2000 is **declining** / **increasing**. This means that there will be **less** / **more** space for people. This means that **less** / **more** of the countryside will be destroyed for houses.

(3)

(b) Look at Figure 1b. It shows a flow map of migrants to and from New Zealand in September 2004.

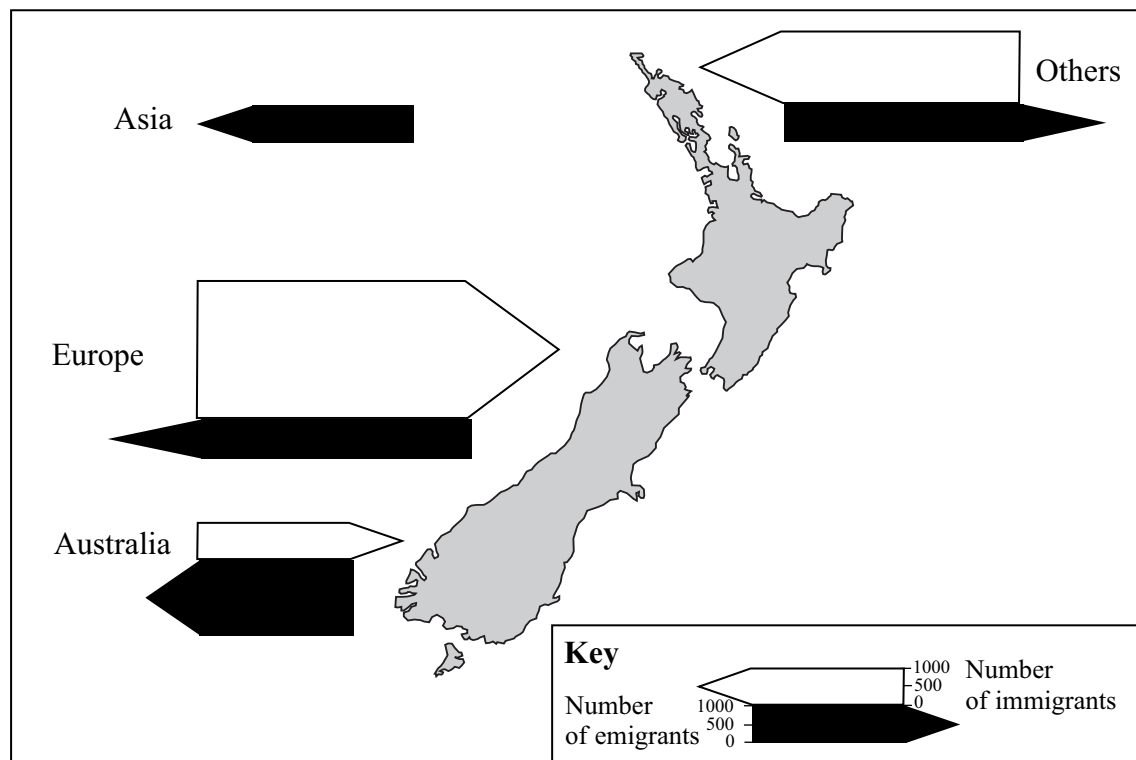


Figure 1b

(i) Complete Figure 1b. Draw a flow line to show that **1000 immigrants arrived in New Zealand from Asia**. Use the key to help you.

(2)

(ii) Answer True or False for the following statements. Put a tick (✓) in the correct box.

	True	False
New Zealand gained most immigrants from Europe.		
More migrants arrived in New Zealand from Australia than left to go to Australia.		
People who leave a country are called emigrants.		

(3)



M 2 2 5 5 7 A 0 3 2 0

Leave
blank

(c) Look at the Ordnance Survey (OS) map.

Find the town of Pembroke Dock.

(i) Pembroke Dock has become the most important settlement in the area.
Why?

.....
.....
.....
.....
.....
.....
.....
.....
.....

(2)

(ii) Pembroke Dock has not grown in all directions.
Why not?

.....
.....
.....
.....
.....
.....
.....
.....
.....

(2)



2. (a) Look at Figure 2. It is an incomplete graph showing the employment structure of Japan from 1950 to 2000.

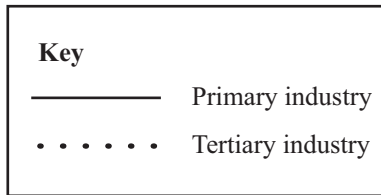
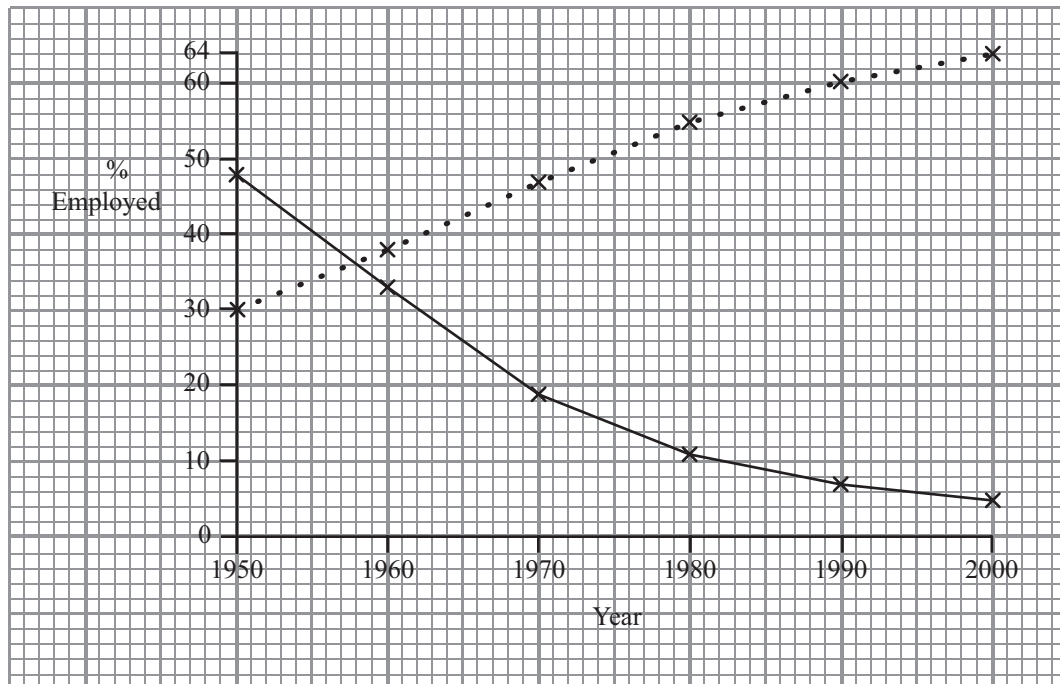


Figure 2

(i) Circle the **correct word** to complete the following sentence.

Tertiary industry can be described as

extractive **manufacturing** **service**

(1)

(ii) The percentage of people employed in primary industry in Japan has changed. Describe the changes. Use data from Figure 2 in your answer.

.....

.....

.....

.....

.....

.....

(3)



Leave
blank

(iii) The % employed in secondary industry in Japan was:

Year	% employed in secondary industry
1950	22
1960	30
1970	34
1980	32
1990	32
2000	30

Plot this data on to Figure 2.

(2)

(iv) Cross out the **wrong** words in the sentences below.

Japan is an **MEDC** / **LEDC**.

The percentage of people employed in tertiary industry has **decreased** / **increased** because these jobs pay **more** / **less** money.

(3)



Leave blank

(b) Look at Photograph A in the Photograph Booklet. It shows tea pickers on a farm in Sri Lanka, an **LEDC**.

(i) Which sector of industry are the workers in the photograph employed in? **Circle** the correct answer.

primary **secondary** **tertiary** **(1)**

(ii) Which four words best describe the characteristics of the farm in Photograph A? Cross out the **wrong** word in each pair.

- | | |
|----------------|------------|
| 1. extensive | intensive |
| 2. subsistence | commercial |
| 3. mixed | organic |
| 4. pastoral | arable |
- (4)**

(iii) The farm in Photograph A uses very little machinery. Give reasons why.

.....

.....

.....

.....

.....

.....

.....

(2)



3. (a) Look at Figure 3a. It shows the air masses that affect the UK.

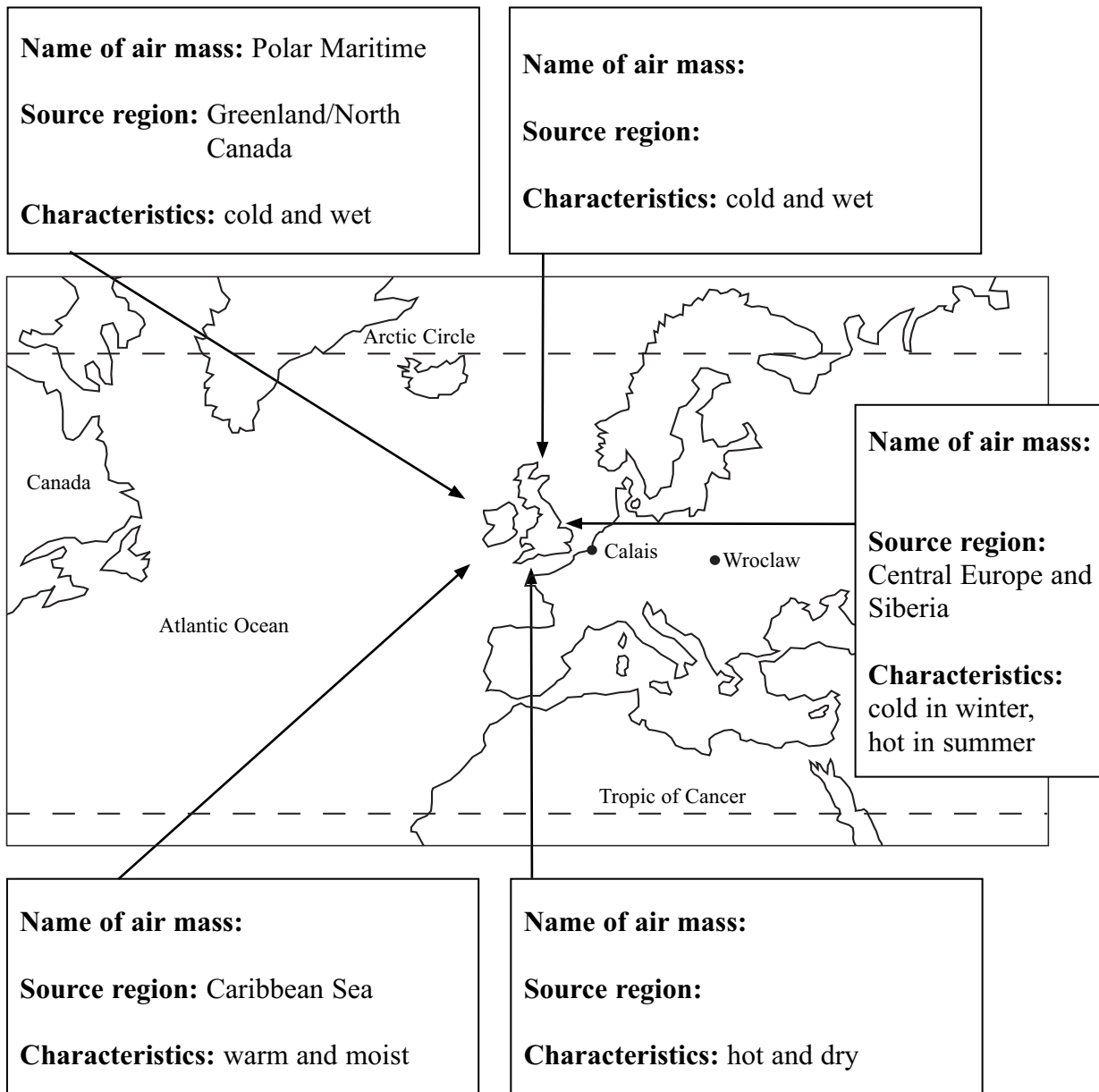


Figure 3a



Leave
blank

- (i) The names of four air masses are missing from the boxes on Figure 3a.
Complete the boxes on Figure 3a.
Write in the names of the four missing air masses. Use the list below.

Arctic maritime
Tropical continental
Tropical maritime
Polar continental

(4)

- (ii) The names of two source regions are missing from the boxes on Figure 3a.
Write in the names of the missing source regions.
Use the list below.

Arctic Ocean
North Africa

(1)

- (iii) Complete the sentences in the paragraph below.
Cross out the **wrong** words.

Continental air masses generally bring **more / less** precipitation to the UK than
maritime air masses. This is because they travel long distances over **land / sea**.

(2)



- (b) Look at Figure 3b. It shows climate data for two towns in Europe, Wroclaw in Poland and Calais in France.
 The towns are shown on Figure 3a.
 Both towns are 51° N of the Equator.

Wroclaw	Precipitation millimetres	Average temperature °C	Calais	Precipitation millimetres	Average temperature °C
January	31	-3	January	109	6
February	30	-1	February	75	6
March	31	3	March	62	8
April	39	8	April	49	10
May	60	13	May	41	12
June	72	17	June	39	15
July	81	19	July	55	17
August	73	19	August	71	17
September	48	14	September	79	16
October	42	9	October	99	12
November	34	4	November	133	10
December	33	0	December	119	7

Figure 3b

- (i) Complete the following sentences.

The average temperature for Calais in July is.....°C

The coldest month in Wroclaw is

(2)

- (ii) Complete the following sentences.

Cross out the **wrong** words.

Calais has a **warmer** / **cooler** winter than Wroclaw.

Calais has a **warmer** / **cooler** summer than Wroclaw.

This is because the sea heats up **quicker** / **slower** than the land.

(3)

- (iii) What is the total precipitation in millimetres for Wroclaw?

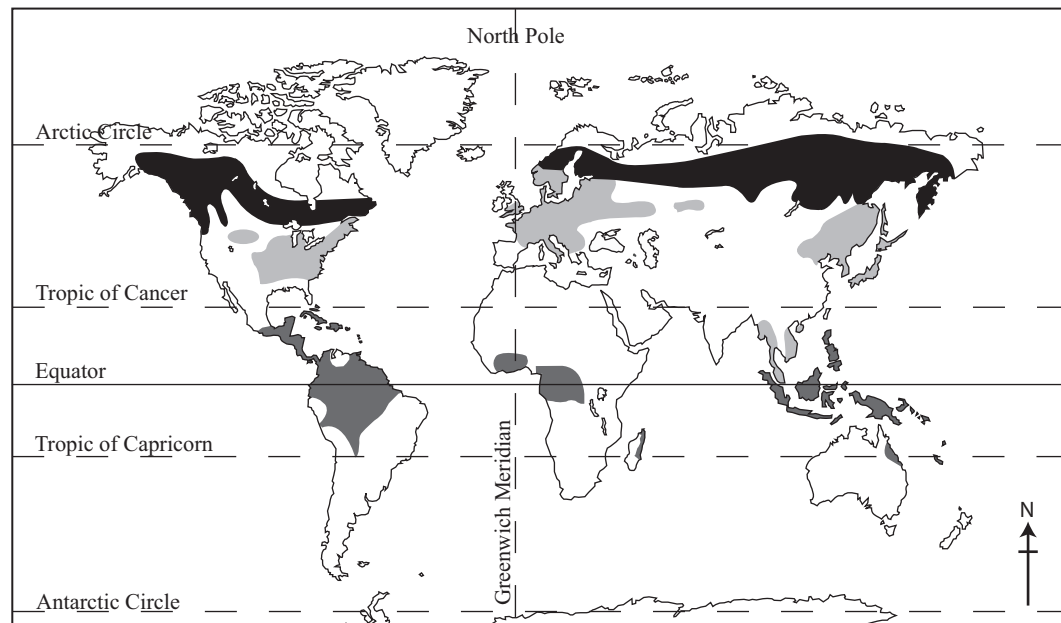
Circle the **correct** answer.

110 457 574 931

(1)



(c) Look at Figure 3c. It shows the distribution of the world's main forests






Key	
	Temperate coniferous forest
	Temperate deciduous forest
	Tropical rainforests

Figure 3c

(Source: Harcourt and Warren, *Tomorrow's Geography*)

Answer True or False for the following statements.
Put a tick (✓) in the correct box.

	True	False
Tropical rainforests are only found south of the Equator.	<input type="checkbox"/>	<input type="checkbox"/>
Temperate coniferous forests are found between the tropical rainforest and the temperate deciduous forests.	<input type="checkbox"/>	<input type="checkbox"/>
Temperate deciduous forests are only found north of the Equator.	<input type="checkbox"/>	<input type="checkbox"/>

(3)



Leave
blank

(d) Conflicts can occur between different groups of people in tropical rainforests.

Choose a tropical rainforest area that you have studied.

Chosen tropical rainforest area

State what conflicts have occurred between different groups of people.

.....

.....

.....

.....

.....

.....

.....

.....

.....

.....

.....

.....

.....

.....

.....

.....

.....

.....

.....

.....

.....

.....

.....

.....

.....

(4)

Q3

(Total 20 marks)



4. Look at the OS map and Figure 4. Figure 4 is a sketch map of part of the OS map.

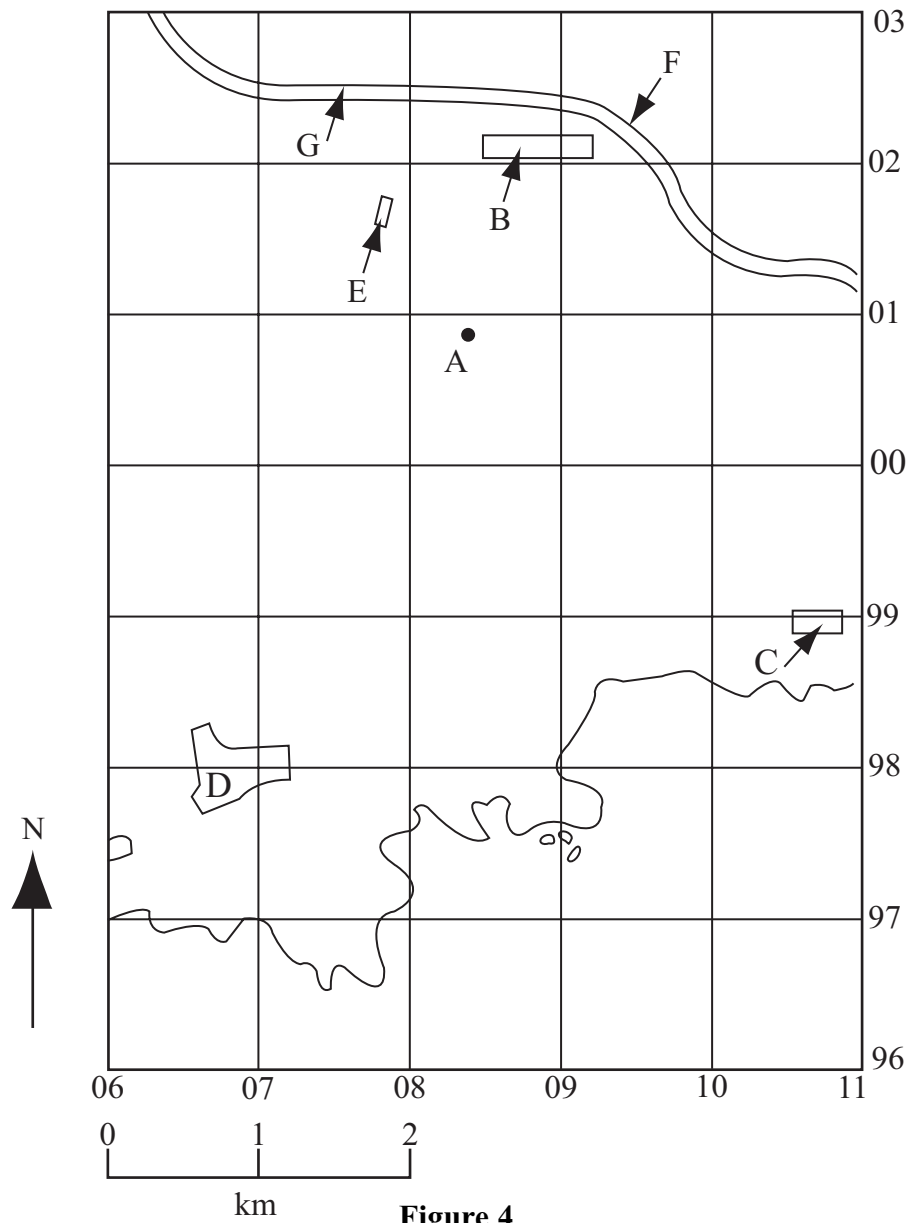


Figure 4

(a) Use the OS map and Figure 4 to complete the table below. One has been completed to help you.

Feature on Figure 4	Feature on OS map
Tourist attraction A	Picnic site
Tourist attraction B	
Tourist attraction C	
Name of settlement D	
Name of settlement E	
Road number F	
Height of spot height G	

(6)



Leave
blank

(b) Look at Photograph B in the Photograph Booklet.

(i) This photograph was taken at grid reference 084976.
Mark with an X this grid reference on Figure 4.

(1)

(ii) The photograph was taken at low tide.
How can you tell?

.....

.....

(1)



Leave
blank

(iii) The landform marked Z on Photograph B is an arch.
Explain how it was formed and how it might change in the future.
You may use a diagram in your answer.

.....

.....

.....

.....

.....

.....

.....

.....

.....

.....

.....

.....

.....

.....

.....

.....

(4)



Leave blank

- (c) Look at Photograph C in the Photograph Booklet. It shows an area of the Alps in France. Match the letters on the photograph with the features of glaciation in the table. One has been done for you.

Letter	Feature
	corrie
	arête
D	hanging valley
	pyramidal peak
	truncated spur

(4)

- (d) The paragraph below describes the formation and features of a delta. Choose the correct words from the box to complete the paragraph.

distributaries	deep	heaviest	shallow
erodes	tributaries	lightest	deposits

A delta forms where a river flows into a sea.

The river a lot of material, which builds up.

The material is dropped first.

Because there is so much material, the river splits into

(4)

Q4

(Total 20 marks)

TOTAL FOR PAPER: 80 MARKS

END



BLANK PAGE



BLANK PAGE

