

New  
Specification



Rewarding Learning

General Certificate of Secondary Education  
2010

StudentBounty.com

71
----

Candidate Number

--

## Geography

Unit 2: Living in Our World

Higher Tier

[GGG22]

THURSDAY 17 JUNE, AFTERNOON

### TIME

1 hour 30 minutes.

### INSTRUCTIONS TO CANDIDATES

Write your Centre Number and Candidate Number in the spaces provided at the top of this page.

Write your answers in the spaces provided in this question paper. Answer **all** questions.

You are provided with an O.S. map for use with Question 1.

Do not write your answers on this map.

### INFORMATION FOR CANDIDATES

The total mark for this paper is 100.

Figures in brackets printed down the right-hand side of pages indicate the marks awarded to each question or part question.

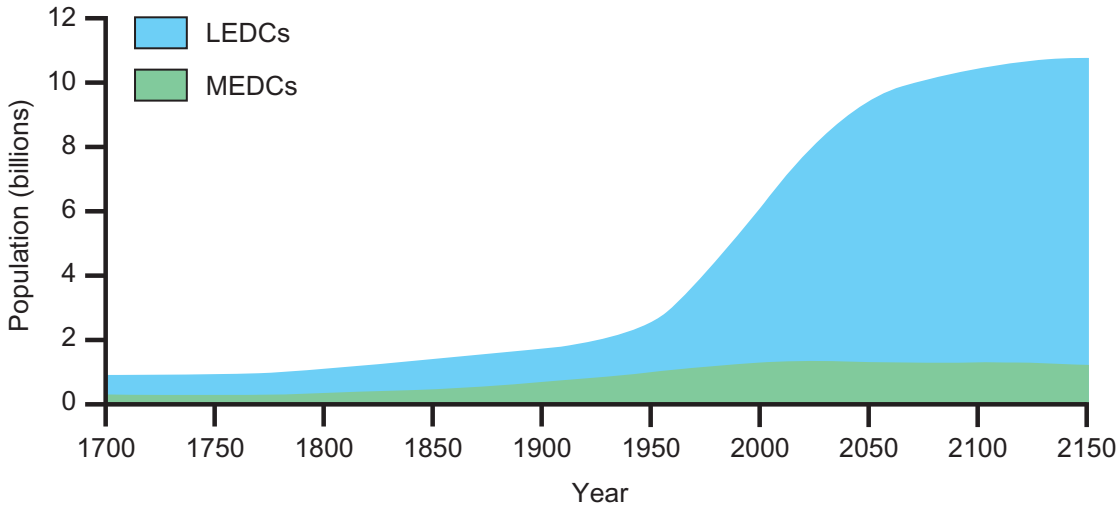
Quality of written communication will be assessed in questions requiring extended answers.

For Examiner's use only	
Question Number	Marks
1	
2	
3	
<b>Total Marks</b>	

**Theme A: People and Where They Live**

Examiner Only
Marks Remark

**1 (a)** Study **Fig. 1** which shows world population growth from 1700–2150. Answer the questions which follow.



© Geography for CCEA by Kay Clarke, Lynda Francis and Peter Corr published by Hodder Education. Reproduced by permission of Hodder Education

**Fig. 1**

.....(i) Describe the pattern of world population growth from 1700–2150 as shown in **Fig. 1**

---



---



---



---



---



---



---



---



---

[4]



- (b) Study Fig. 2 which contains data obtained from an on-line Geographic Information System. (GIS) – Northern Ireland Neighbourhood Information Service (NINIS).

1	A8 Population by Local Government District 2007			
2				
3				
4	LGD Name	A8 Population (2007)	2007 Mid Year Estimate	% of Population
5		A8Pop_d07	Mid_Year_Est_d07	Perc_Pop_d07
6	Antrim	1500	52600	2.9
7	Ards	500	77100	0.6
8	Armagh	1200	57700	2.1
9	Ballymena	1600	62100	2.6
10	Ballymoney	300	29700	1.0
11	Banbridge	300	46400	0.6
12	Belfast	5000	267500	1.9
13	Carrickfergus	100	40000	0.2
14	Castlereagh	300	65600	0.5
15	Coleraine	1200	56800	2.1
16	Cookstown	900	35400	2.5
17	Craigavon	3100	88800	3.5
18	Derry	600	108500	0.6
19	Down	600	69200	0.9
20	Dungannon	3700	54300	6.8
21	Fermanagh	1000	61300	1.6
22	Larne	100	31300	0.3
23	Limavady	300	34400	0.9
24	Lisburn	1000	113500	0.9
25	Magherafelt	900	43100	2.1
26	Moyle	100	16700	0.6
27	Newry and Mourne	3000	95500	3.1
28	Newtownabbey	700	81700	0.9
29	North Down	300	78700	0.4
30	Omagh	1200	51500	2.3
31	Strabane	300	39400	0.8
32				
33	<b>Northern Ireland</b>	<b>30000</b>	<b>1759100</b>	<b>1.7</b>
34				

The A8 Countries are eight central and Eastern European countries which joined the European Union in May 2004. These A8 countries are the Czech Republic, Estonia, Hungary, Latvia, Lithuania, Poland, Slovakia and Slovenia.

© Source: Neighbourhood Statistics (NISRA) Website: [www.ninis.nisra.gov.uk](http://www.ninis.nisra.gov.uk) . Crown copyright material is reproduced with the permission of the Controller of HMSO

Fig. 2

(i) Using Column B, describe briefly the distribution of migrants from the A8 countries living in different districts in Northern Ireland.

---

---

---

---

---

---

---

---

[3]

(ii) State **one** other way of displaying information in an on-line GIS (other than tables of data).

---

[1]

(iii) State **one** advantage of using a GIS to investigate the number and percentage of migrants into Northern Ireland.

---

---

---

---

---

[2]

Examiner Only

Marks Remark

- (c) Study **Table 1** which shows information about the UK's population by age group. Answer the questions which follow.

**Table 1**

<b>AGE GROUPS</b> <b>(UK Population – Millions in each Age Group)</b>			
	Under 19	20–64	65+
1991	14.8	33.8	9.1
2005	14.7	36.2	9.5
2031 (estimated)	13.3	36.3	14.7
2050 (estimated)	12.5	35.0	16.4

© Tables from Geog GCSE by Anna King et al (OUP, 2006), copyright © Oxford University Press 2006, reprinted by permission of Oxford University Press.

- (i) Describe the changes in the structure of the population of the UK by age groups as shown in **Table 1**.

---



---



---



---



---



---



---



---

[3]

- (ii) Explain **one** impact that a large aged dependent population may have on a country.

---



---



---



---



---



---



---



---

[3]

Examiner Only	
Marks	Remark

(d) Study the Ordnance Survey extract of Durham in England and answer the questions which follow.

Examiner Only

Marks Remark

(i) Explain fully **one** factor which may have influenced the original choice of this site of Durham (GR 2742).

Factor \_\_\_\_\_

Explanation \_\_\_\_\_

\_\_\_\_\_

\_\_\_\_\_

\_\_\_\_\_

\_\_\_\_\_

\_\_\_\_\_ [3]

(ii) State the straight line distance from the park and ride terminus at 307446 to the bus and coach station in the centre of Durham at 269426.

\_\_\_\_\_ km [2]

(iii) Complete **Table 2** by arranging the following settlements in order of size beginning with the largest. One has been completed for you.

Durham (GR 2742)

Sherburn (GR 3142)

Edmondsley (GR 2349)

Sacrison (GR 2447)

**Table 2**

Rank Order	Settlement
1	Durham
2	
3	
4	

[3]

(iv) State the term used to describe the arrangement of settlements in order of importance in a given area.

\_\_\_\_\_ [1]

- (v) Complete **Table 3** to show which services are available in Sacriston (GR 2447).

**Table 3**

Settlement	Post Office	Church	Public house	2 or more roads	Bus Station	School	Hospital
Durham	✓	✓	✓	✓	✓	✓	✓
Sacriston	✓			✓			
Edmondsley	✓		✓	✓			

[3]

- (vi) Describe and explain the variation in the number and variety of services in the settlements in **Table 3**.

---



---



---



---



---



---



---



---



---



---

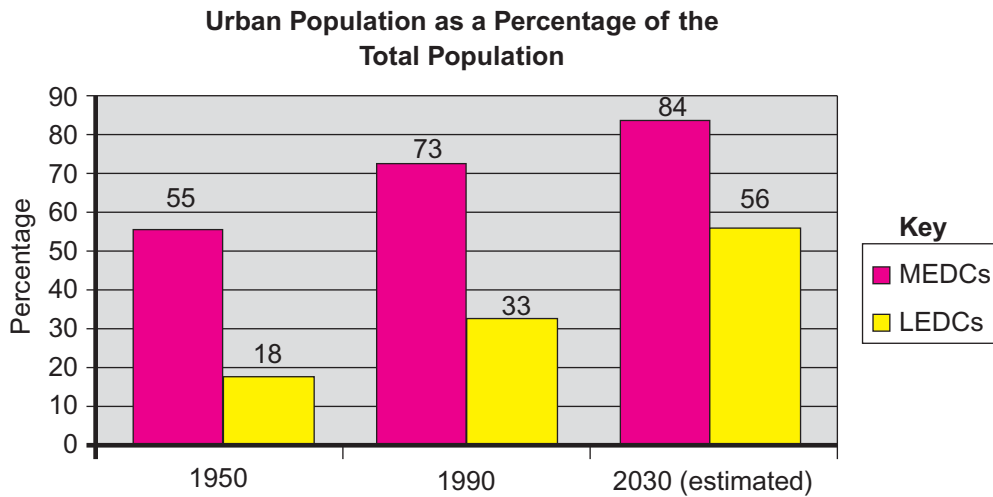
[4]

Examiner Only

Marks Remark



- (e) Study **Fig. 3** which shows the urban population as a percentage of the total population in different areas. Answer the questions which follow.



© Tables from Geog GCSE by Anna King et al (OUP, 2006), copyright © Oxford University Press 2006, reprinted by permission of Oxford University Press.

**Fig. 3**

- (i) Compare the rates of urbanisation from 1950–2030.

---

---

---

---

---

---

---

---

[3]

- (ii) Explain why the rate of urbanisation is increasing in LEDCs. Only **one** reason is needed.

---

---

---

---

---

---

---

---

[3]

Examiner Only	
Marks	Remark

(f) Many inner city areas have been regenerated and improved. Evaluate the sustainability of an inner city urban planning scheme you have studied. Mention **two** aspects in your answer.

Name of planning scheme \_\_\_\_\_

---



---



---



---



---



---



---



---



---



---



---



---



---



---



---



---



---



---



---



---



---



---



---



---

[6]

**Examiner Only**

**Marks Remark**

Examiner Only	
Marks	Remark

## Theme B: Contrasts in World Development

Examiner Only

Marks Remark

2 (a) Study **Table 4** which shows development information on four countries. Answer the questions which follow.

**Table 4**

Name of Country	Indicators			LEDC/MEDC
	GNP per capita \$US	Literacy rate %	Life expectancy at birth (years)	
Mali	1090	24	48	LEDC
Bangladesh	1440	47	65	LEDC
UK	36,130	99	79	MEDC
Norway	58,500	99	81	

© Carl Haub and Mary Mederios Kent, 2009 World Population Data Sheet (Washington, DC: Population Reference Bureau, 2009). Used with permission [http://www.prb.org/pdf09/09wpds\\_eng.pdf](http://www.prb.org/pdf09/09wpds_eng.pdf)

(i) State **one** social indicator of development listed in **Table 4**.

\_\_\_\_\_ [1]

(ii) Complete **Table 4** by categorising Norway as a LEDC/MEDC. [1]

(iii) Using evidence from the table, explain why Bangladesh is considered to be an LEDC.

\_\_\_\_\_  
 \_\_\_\_\_  
 \_\_\_\_\_  
 \_\_\_\_\_  
 \_\_\_\_\_  
 \_\_\_\_\_  
 \_\_\_\_\_ [3]

(iv) State the full name of the development indicator which combines all the indicators shown in **Table 4**.

\_\_\_\_\_ [2]

**(b)** Discuss how globalisation can both help and hinder development.  
Refer to **one** case study country within your answer.

---

---

---

---

---

---

---

---

---

---

---

---

---

---

---

---

---

---

---

---

---

---

[8]

Examiner Only	
Marks	Remark

(c) Study Fig. 4 which shows an advertisement for Fairtrade fortnight in 2010. Answer the questions which follow.

Examiner Only

Marks Remark



The graphic for Fairtrade Fortnight 2010 features the text 'FAIRTRADE FORTNIGHT' in green and yellow, '2010' in large green numbers with 'THE BIG SWAP' in a yellow circle, and '22 FEBRUARY-7 MARCH' in blue. To the right is the Fairtrade logo (a blue leaf and a yellow leaf) with 'FAIRTRADE' and a registered trademark symbol. Below the graphic is a white box with black text: 'We want over one million people to join us in the big swap. During Fairtrade Fortnight swap your usual shopping items and buy Fairtrade items, like sugar, clothes, bananas and even footballs!'.

© Fairtrade Foundation <http://www.fairtrade.org.uk/thebigswap/>

Fig. 4

(i) State the meaning of the term **Fairtrade**.

---

---

---

---

[2]

(ii) Explain **how** Fairtrade can help LEDCs.

---

---

---

---

---

---

[3]



Theme C: Managing Our Resources

Examiner Only  
Marks Remark

3 (a) Study Fig. 5 which shows the global annual consumption of energy per capita. Answer the questions which follow.

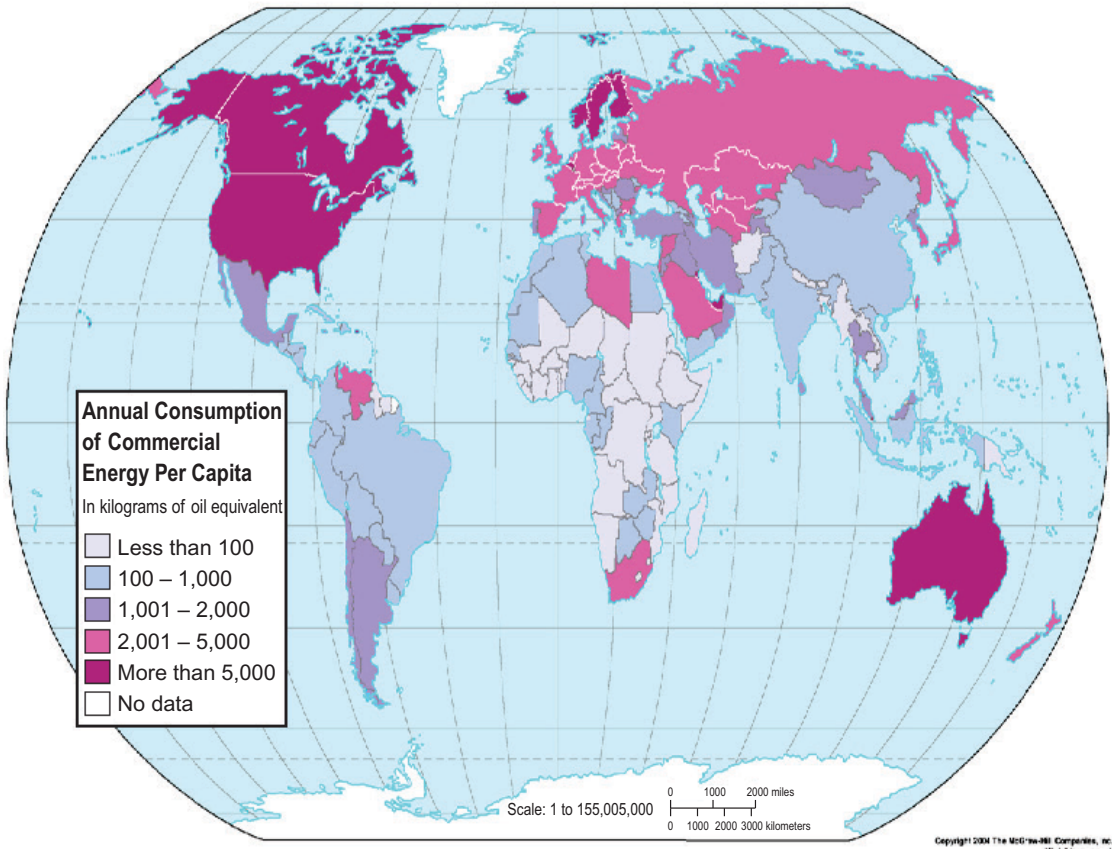


Fig. 5

Using Fig. 5, describe and explain the global pattern of energy consumption.

---

---

---

---

---

---

---

---

---

---

---

[5]

(b) Study **Fig. 6** which shows a message about carbon footprints. Answer the questions that follow.

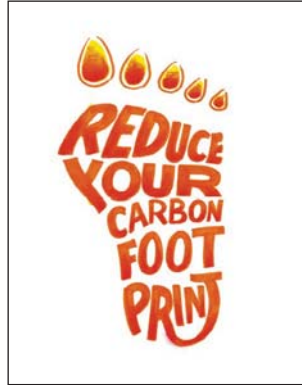


Fig. 6

(i) State the meaning of the term **carbon footprint**.

---

---

---

---

[2]

(ii) Explain **one** way in which carbon footprints can be reduced.

---

---

---

---

---

---

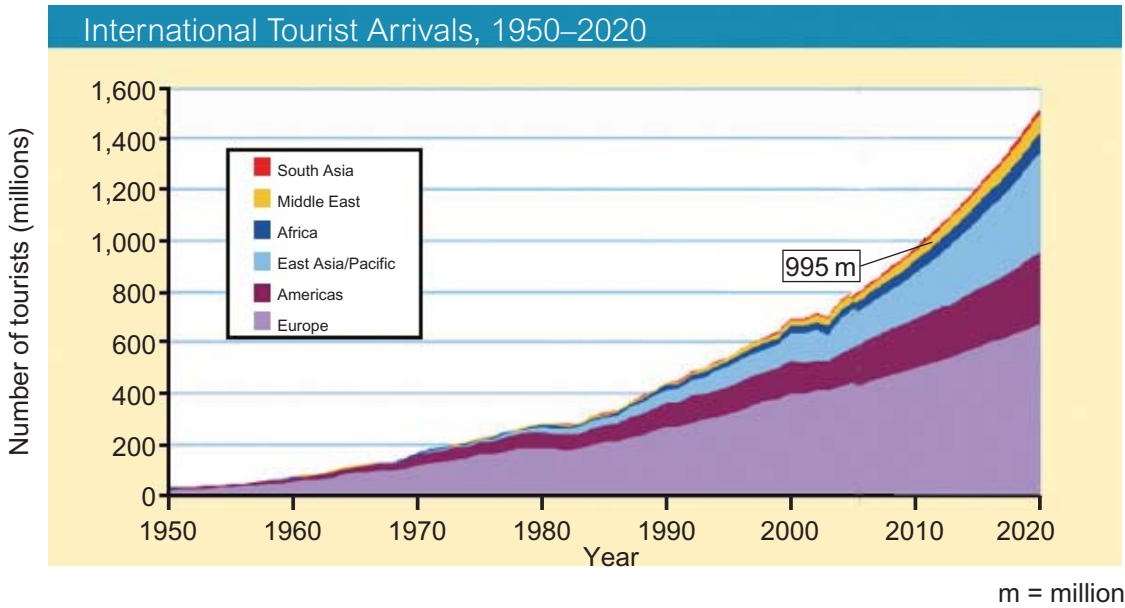
[3]

Examiner Only	
Marks	Remark



(c) Study **Fig. 7** which shows the number of tourists to each region across the world. Answer the questions which follow.

Examiner Only	
Marks	Remark



© UNWTO, 9284404010. *Tourism 2020 Vision, Volume 6, South Asia, page 9*

**Fig. 7**

(i) State the name of the region with the least number of tourists in 2010 as shown on **Fig. 7**.

\_\_\_\_\_ [1]

(ii) Using **Fig. 7 underline** the total amount of tourists who travelled in 2010.

995    99,500,000    995,000,000 [1]

(iii) Explain why the number of international tourists has grown since 1950. Only **one** reason is needed.

\_\_\_\_\_

\_\_\_\_\_

\_\_\_\_\_

\_\_\_\_\_

\_\_\_\_\_

\_\_\_\_\_ [3]

(iv) Evaluate the economic impacts that tourism can bring to an area. Refer to places in your answer.

---

---

---

---

---

---

---

---

---

---

---

---

---

---

---

---

---

---

---

---

---

---

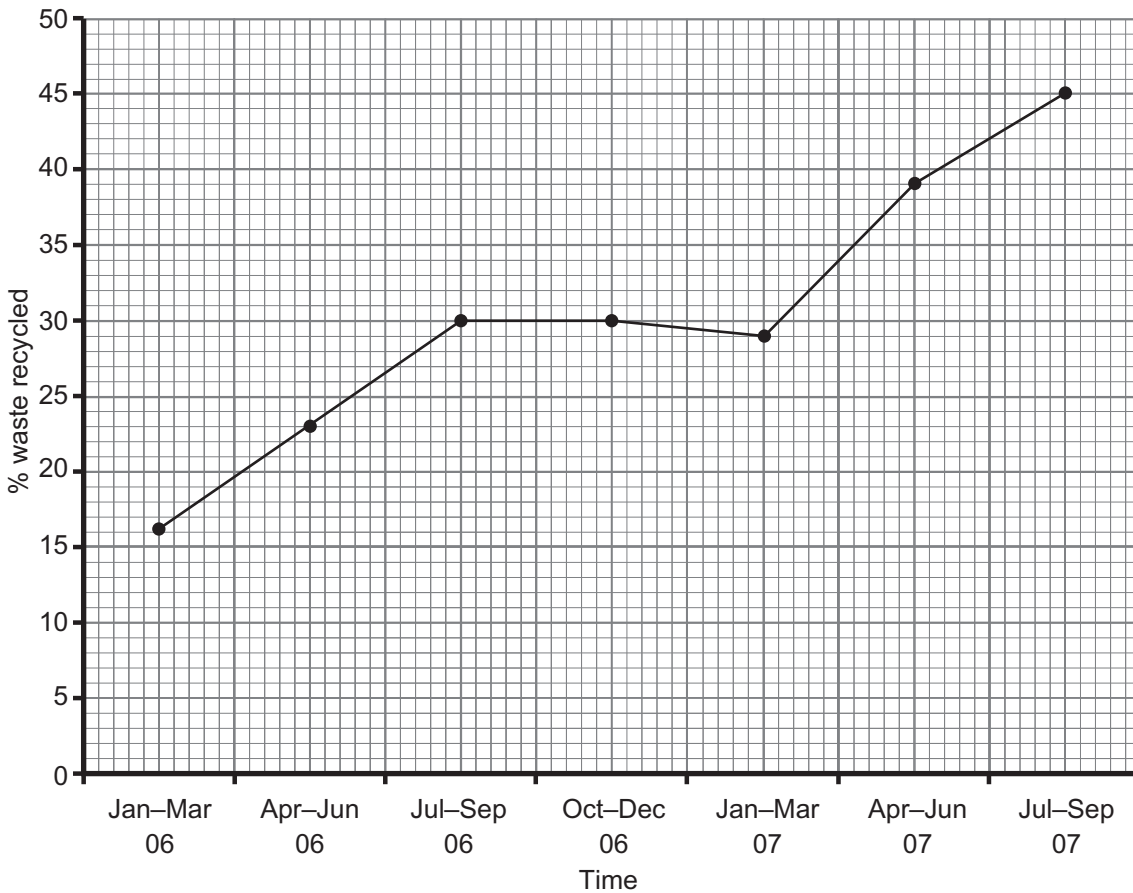
---

[5]

Examiner Only	
Marks	Remark

(d) Study **Fig. 8** which shows recycling rates for a Council District in Northern Ireland. Answer the questions which follow.

Examiner Only
Marks Remark



Source: Omagh District Council Recycling Guide 2008/09

**Fig. 8**

(i) Describe the trend in recycling rates shown in **Fig. 8**.

---

---

---

---

---

---

---

[3]

- (ii) State **one** other sustainable (not recycling) and one non-sustainable approach to waste management that this Council could use.

Sustainable method →  [1]

Non-sustainable method →  [1]

Examiner Only	
Marks	Remark

---

**THIS IS THE END OF THE QUESTION PAPER**

---







Permission to reproduce all copyright material has been applied for .  
In some cases, efforts to contact copyright holders may have been unsuccessful and CCEA  
will be happy to rectify any omissions of acknowledgement in future if notified.