

Centre Number						Candidate Number				
Surname										
Other Names										
Candidate Signature										

For Examiner's Use	
Examiner's Initials	
Question	Mark
1	
2	
3	
4	
TOTAL	



General Certificate of Secondary Education
Higher Tier
June 2014

Geography (Specification B)

90352H

H

Unit 2 Hostile world and Investigating the shrinking world

Thursday 22 May 2014 9.00 am to 10.30 am

For this paper you must have:

- the insert (enclosed)
 - a ruler.
- You may use a calculator.

Time allowed

- 1 hour 30 minutes

Instructions

- Use black ink or black ball-point pen. You may use pencil for maps, diagrams and graphs.
- Fill in the boxes at the top of this page.
- Answer **two** questions: **one** question from Section A and **one** question from Section B.
- You must answer the questions in the spaces provided. Do not write outside the box around each page or on blank pages.
- Do all rough work in this book. Cross through any work you do not want to be marked.
- Use case studies to support your answers where appropriate.

Information

- The marks for questions are shown in brackets.
- The maximum mark for this paper is 86.
- You will be marked on your ability to:
 - use good English
 - organise information clearly
 - use specialist vocabulary where appropriate.
- Spelling Punctuation and Grammar will be assessed in questions 1(e)(iii) or 2(f) and 3(e) or 4(e). The marks available for Spelling, Punctuation and Grammar (**SPaG**) are shown below the mark allocation for each question.



J U N 1 4 9 0 3 5 2 H 0 1

Section A – Hostile world

Answer **one** question from Section A, either Question 1 **or** Question 2.

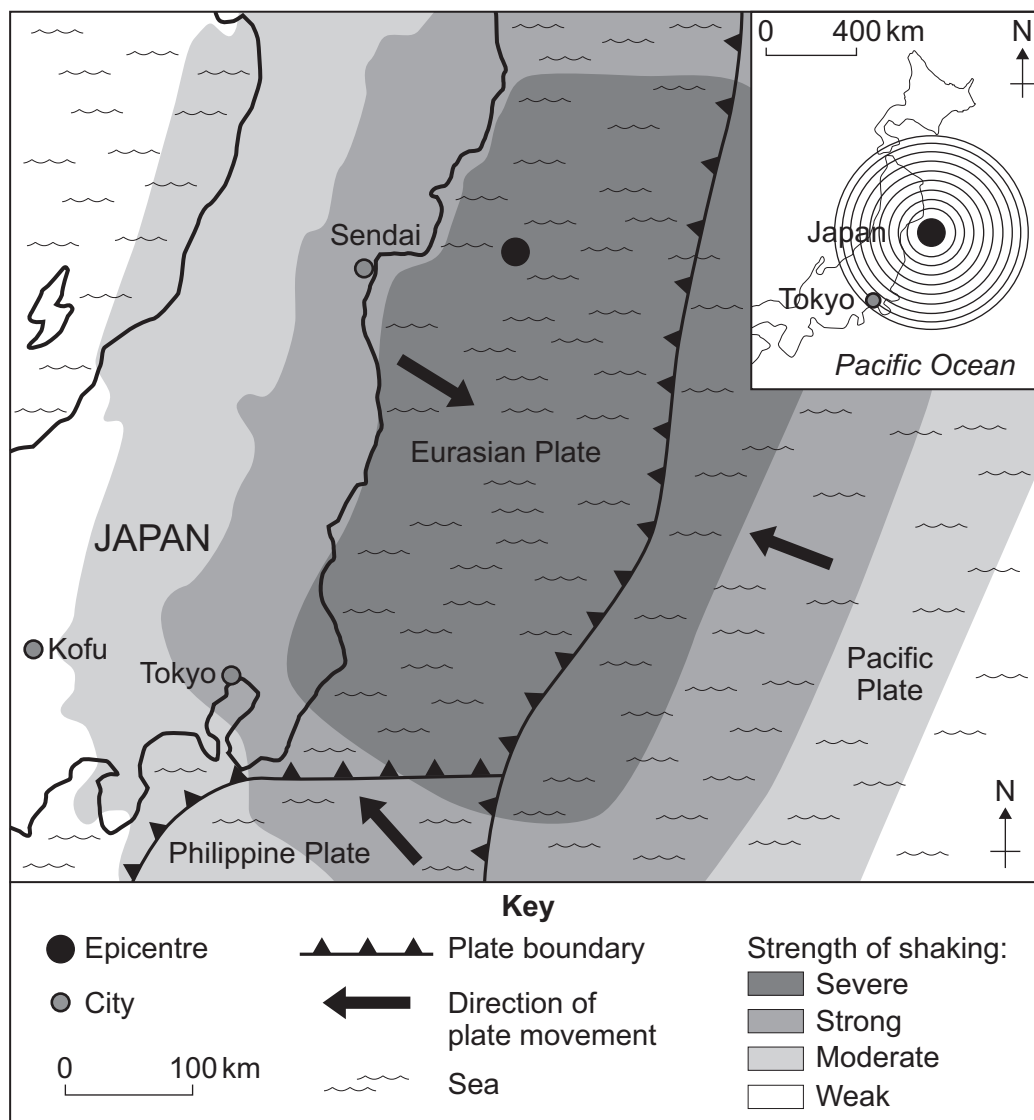
Use case studies to support your answers where appropriate.

Total for this question: 43 marks

Living with natural hazards

- 1 Study **Figure 1**. **Figure 1** shows information about an earthquake. The earthquake affected Japan in March 2011.

Figure 1



1 (a) Describe the location of the earthquake epicentre.

[3 marks]

.....

.....

.....

.....

.....

.....

1 (b) Suggest how the effects of earthquakes can be reduced.

[5 marks]

.....

.....

.....

.....

.....

.....

.....

.....

.....

.....

.....

.....

.....

.....

.....

.....

.....

Extra space

.....

.....

.....

.....

.....

Turn over ▶



1 (c) Explain why volcanoes occur at plate boundaries.

[4 marks]

.....

.....

.....

.....

.....

.....

.....

.....

Extra space

.....

.....

.....

1 (d) Explain why people live in areas at risk from volcanic eruptions.

[5 marks]

.....

.....

.....

.....

.....

.....

.....

.....

.....

.....

.....



Extra space

.....

.....

.....

.....

1 (e) Study **Figure 2** on the insert. **Figure 2** gives information about a tropical storm (Hurricane Dean) in 2007.

1 (e) (i) Describe the predicted path of Hurricane Dean between 17 August 2007 and 22 August 2007.

[3 marks]

.....

.....

.....

.....

.....

.....

1 (e) (ii) Suggest why the tropical storm (Hurricane Dean) became less powerful after 22 August 2007.

[3 marks]

.....

.....

.....

.....

.....

.....

Question 1 continues on the next page

Turn over ►



1 (f) Explain how wildfires can start.

Use an example(s) you have studied.

[6 marks]

.....

.....

.....

.....

.....

.....

.....

.....

.....

.....

.....

.....

.....

.....

.....

.....

.....

.....

.....

.....

.....

.....

Extra space

.....

.....

.....

.....

.....

.....

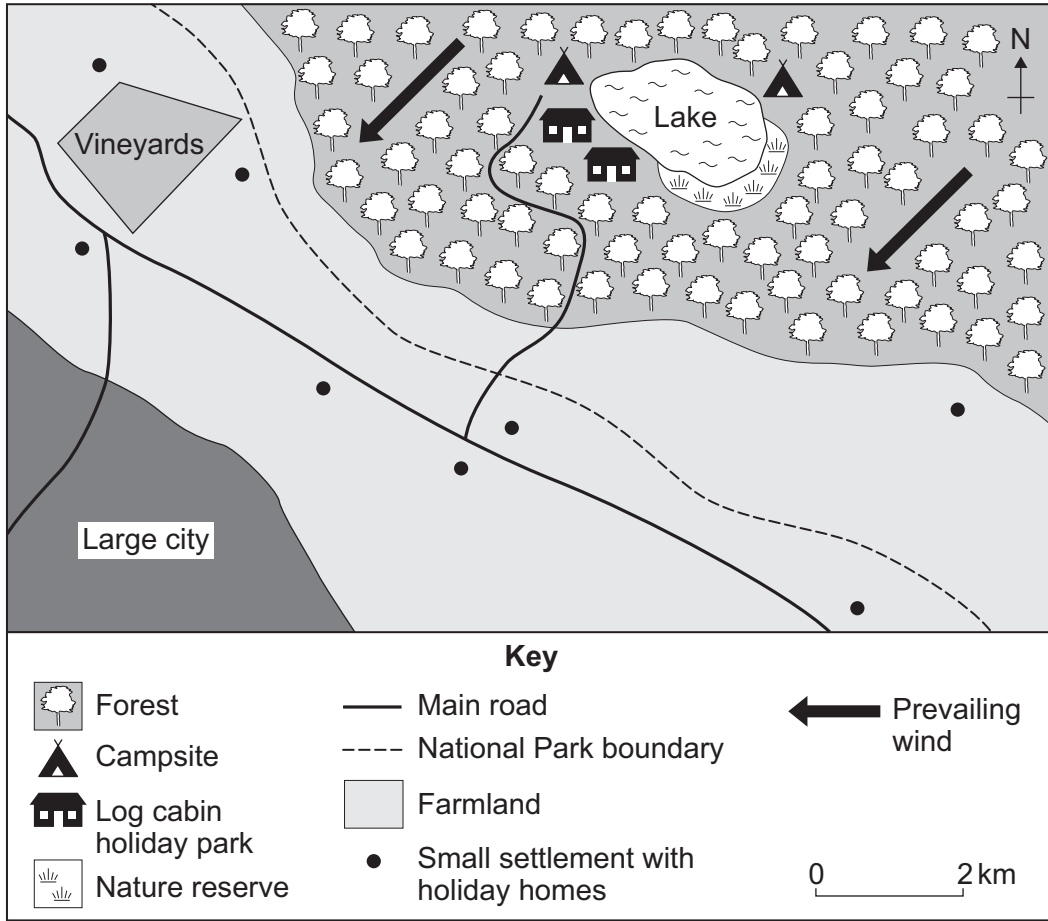
Question 1 continues on the next page

Turn over ►



1 (g) Study Figure 3. Figure 3 shows an area at risk from wildfires.

Figure 3



Suggest why the area shown in Figure 3 should be protected from wildfires.

[3 marks]

.....

.....

.....

.....

.....

.....



There are no questions printed on this page

**DO NOT WRITE ON THIS PAGE
ANSWER IN THE SPACES PROVIDED**

Turn over ►

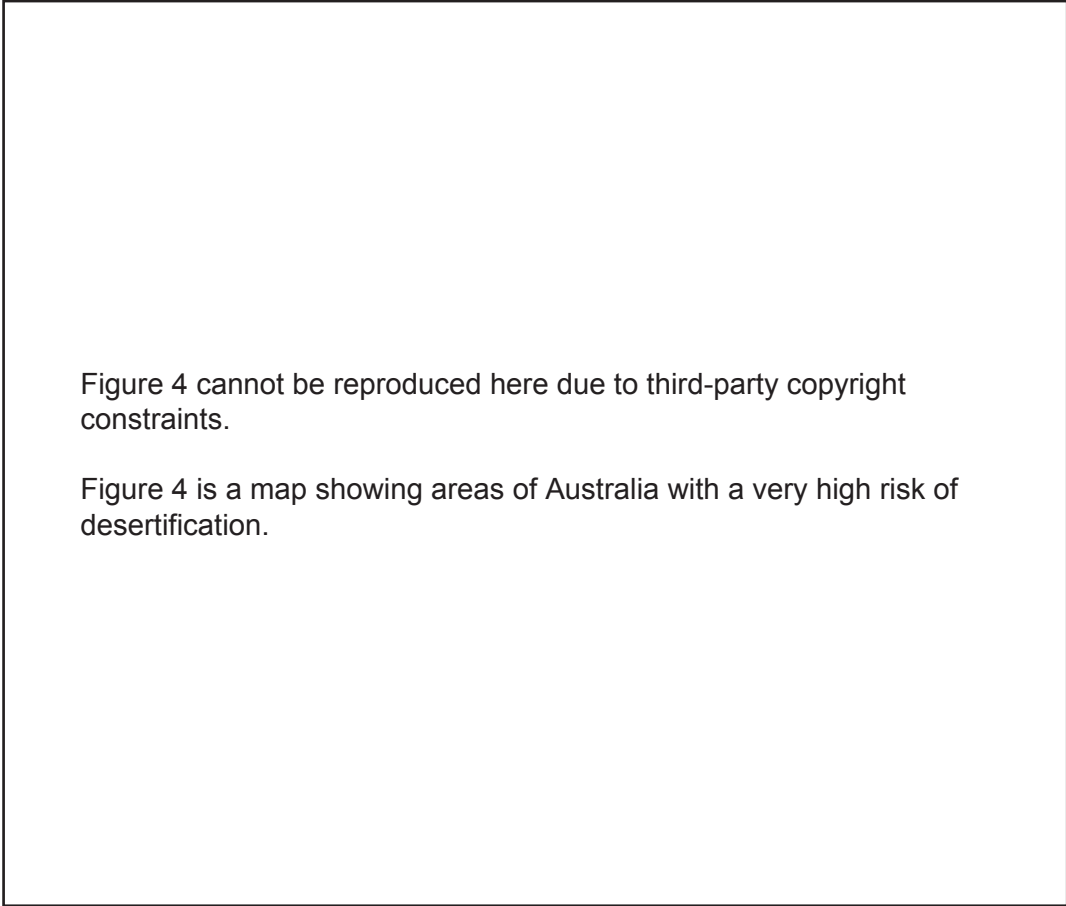


The challenge of extreme environments

Total for this question: 43 marks

2 (a) Study **Figure 4**. **Figure 4** shows areas of Australia with a very high risk of desertification.

Figure 4



Describe the distribution of the areas with a very high risk of desertification shown in **Figure 4**.

[3 marks]

.....

.....

.....

.....

.....

.....



2 (b) Explain how hot desert environments are formed.

Use **Figure 4** and your own knowledge.

[5 marks]

.....

.....

.....

.....

.....

.....

.....

.....

.....

.....

.....

.....

.....

.....

.....

Extra space

.....

.....

.....

.....

.....

2 (c) Describe the climatic causes of desertification.

[3 marks]

.....

.....

.....

.....

.....

.....

.....

Turn over ►



2 (d) Describe how desertification can be managed.

Use an example(s) you have studied.

[5 marks]

.....

.....

.....

.....

.....

.....

.....

.....

.....

.....

Extra space

.....

.....

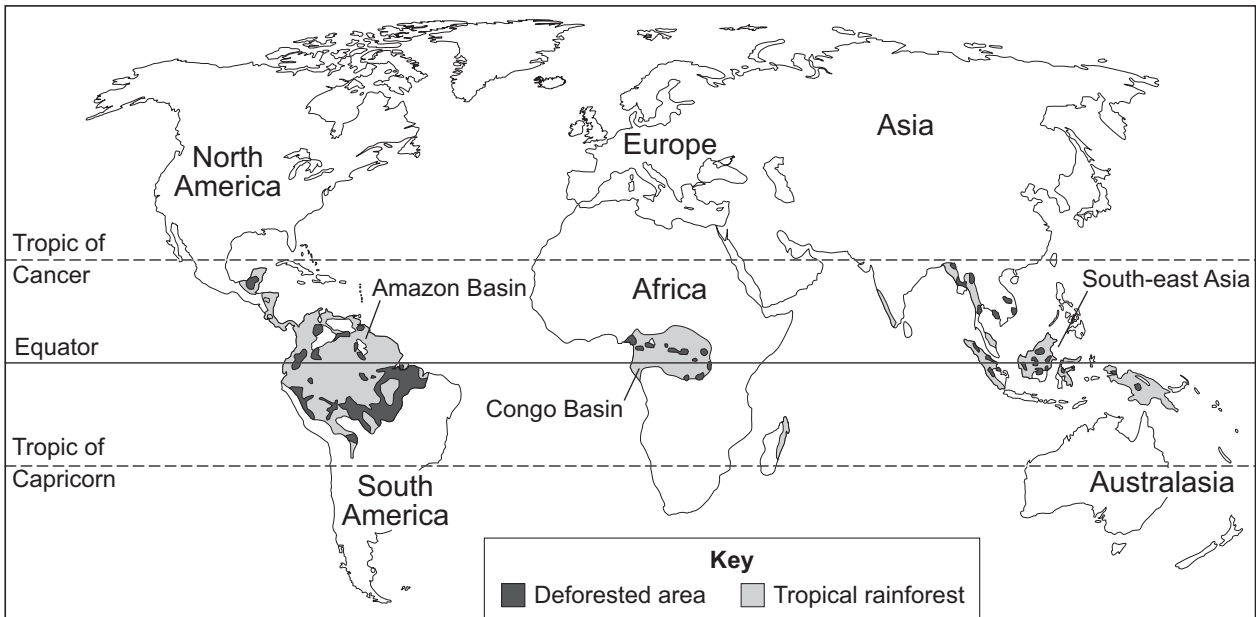
.....

.....



2 (e) Study Figure 5. Figure 5 is a world map showing areas of tropical rainforest and deforested areas.

Figure 5



2 (e) (i) Describe the distribution of areas of tropical rainforest.

[2 marks]

.....

.....

.....

.....

2 (e) (ii) Suggest why the rate of deforestation might change in the future.

[4 marks]

.....

.....

.....

.....

.....

.....

.....

.....

Turn over ►



2 (f) Study **Figure 6** on the insert. **Figure 6** gives information about an area of tropical rainforest in Ecuador, a less developed country in South America.

Drilling for oil in Yasuni National Park has more advantages than disadvantages.

Do you agree with this statement? Give reasons for your decision.

[8 marks]
[SPaG 3 marks]

.....

.....

.....

.....

.....

.....

.....

.....

.....

.....

.....

.....

.....

.....

.....

.....

.....

.....

.....

.....

.....

.....

Extra space

.....

.....

.....

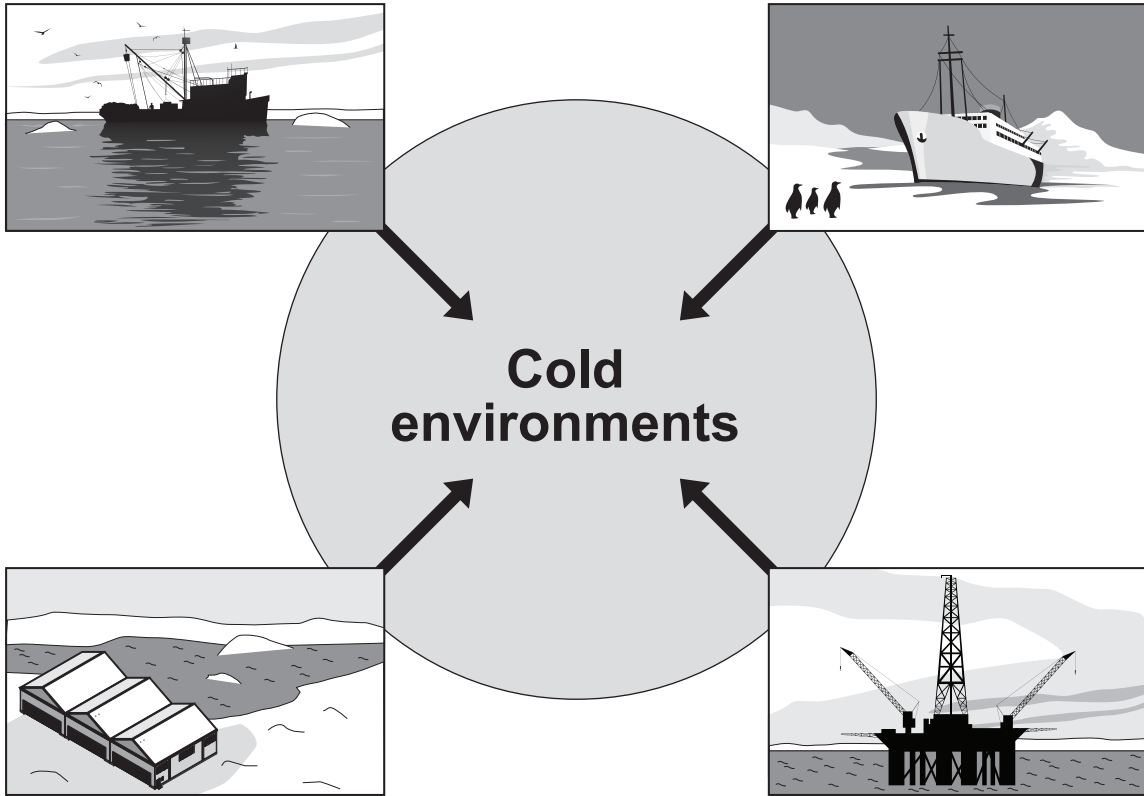
.....

.....



2 (g) Study Figure 7. Figure 7 shows some human activities in cold environments.

Figure 7



Explain how cold environments provide economic opportunities.

Use an example(s) you have studied.

[6 marks]

.....

.....

.....

.....

.....

.....

.....

.....

.....

.....

.....

Turn over ►



.....

.....

Extra space

.....

.....

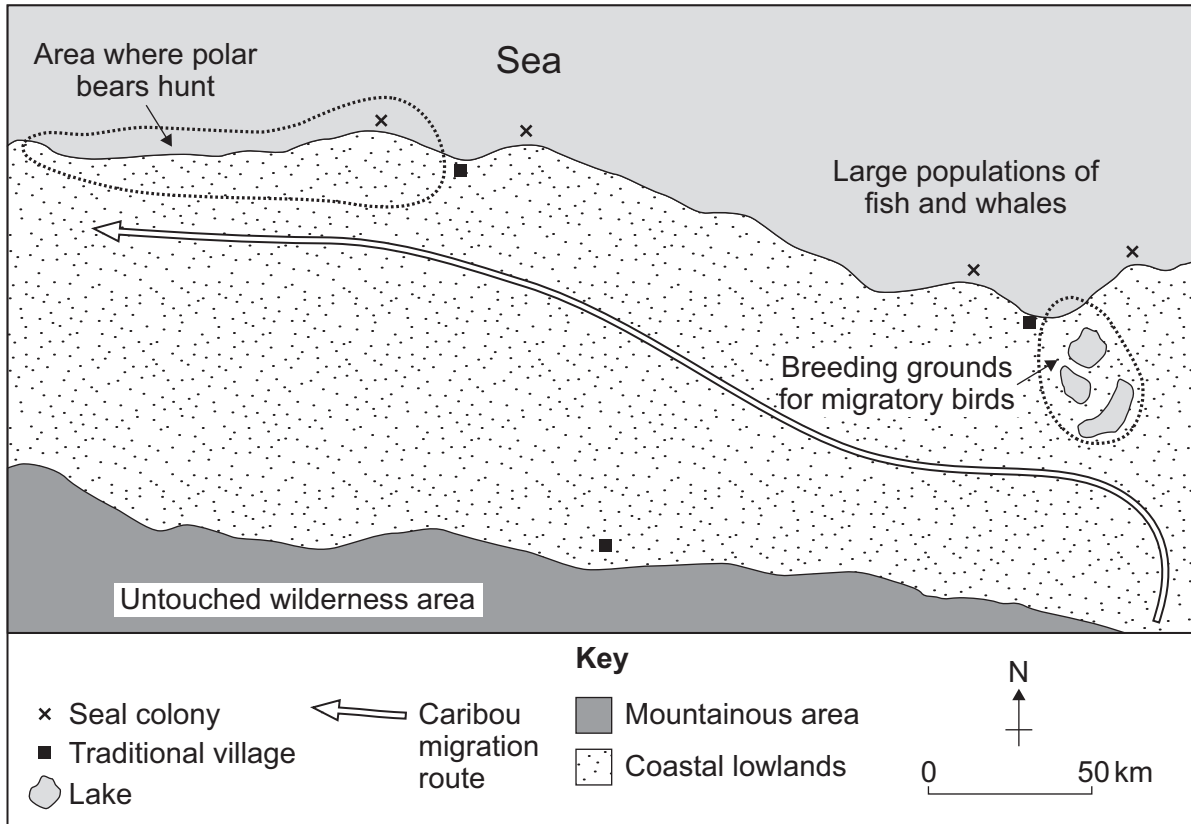
.....

.....



2 (h) Study Figure 8. Figure 8 shows an area in a cold environment. This area is at risk from development.

Figure 8



Suggest why the region shown in Figure 8 should be protected from development.

[4 marks]

.....

.....

.....

.....

.....

.....

.....

.....

.....

.....

End of Section A

Turn over ►



Section B – Investigating the shrinking world

Answer **one** question from Section B, either Question 3 **or** Question 4.

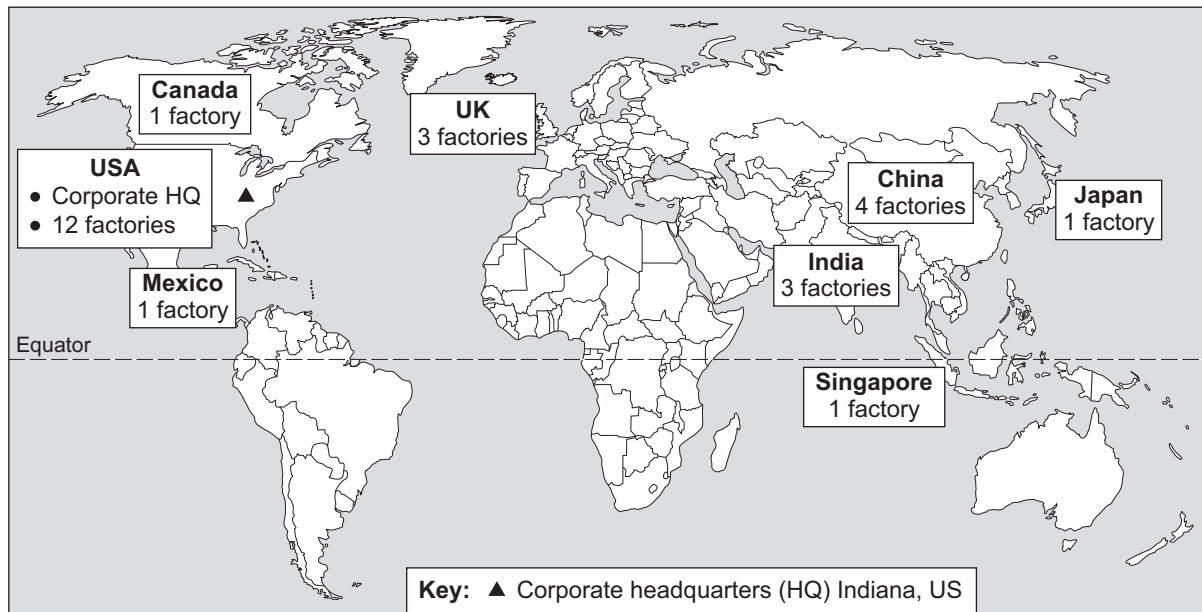
Use case studies to support your answers where appropriate.

Investigating the globalisation of industry

Total for this question: 43 marks

3 (a) Study **Figure 9**. **Figure 9** shows the location of factories owned by a Transnational Corporation (TNC).

Figure 9



3 (a) (i) With the help of **Figure 9**, explain what is meant by a Transnational Corporation (TNC). **[4 marks]**

.....

.....

.....

.....

.....

.....

.....

.....

.....

.....



Extra space

.....

.....

.....

3 (a) (ii) Suggest reasons why many TNCs have opened factories in less developed countries such as India.

[3 marks]

.....

.....

.....

.....

.....

.....

Question 3 continues on the next page

Turn over ►



3 (b) Explain how the development of TNCs can cause problems.

Use an example(s) you have studied.

[6 marks]

.....

.....

.....

.....

.....

.....

.....

.....

.....

.....

.....

.....

.....

.....

.....

.....

.....

.....

.....

.....

.....

.....

Extra space

.....

.....

.....

.....

.....



There are no questions printed on this page

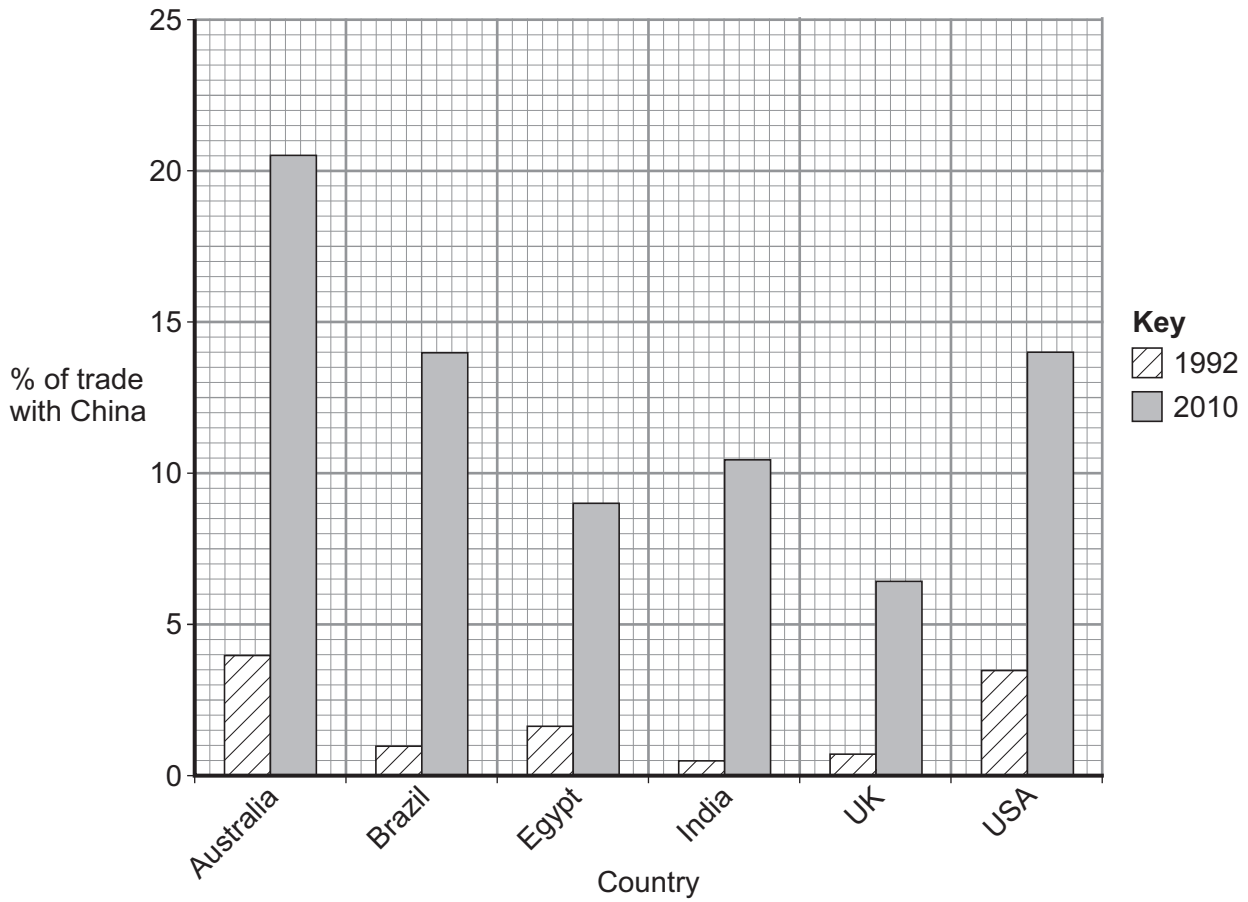
**DO NOT WRITE ON THIS PAGE
ANSWER IN THE SPACES PROVIDED**

Turn over ►



3 (c) Study Figure 10. Figure 10 gives information about six countries' trade with China.

Figure 10



3 (c) (i) Describe the change in the UK's trade with China between 1992 and 2010 shown in Figure 10.

[2 marks]

.....

.....

.....

.....



3 (c) (ii) Suggest **two** reasons why trade between China and the countries shown in **Figure 10** changed between 1992 and 2010.

[4 marks]

1

.....

.....

.....

.....

2

.....

.....

.....

3 (d) The development gap is the difference in economic development between countries. Study **Figure 11**. **Figure 11** gives information about Canada and Sri Lanka in 2011.

Figure 11

Country	HDI	HDI ranking out of 187 countries	GNI	GNI ranking out of 187 countries
Canada	0.91	6	35 166	16
Sri Lanka	0.69	97	4 943	109

Human Development Index (HDI) – a measure of quality of life from 0 (lowest) to 1 (highest)

Gross National Income (GNI) – average income (US\$) per year

Describe the development gap between Canada and Sri Lanka.

Use **Figure 11**.

[2 marks]

.....

.....

.....

.....

Turn over ►



3 (f) Suggest reasons for the growth of science and research parks in more developed countries.

[5 marks]

.....

.....

.....

.....

.....

.....

.....

.....

.....

.....

.....

Extra space

.....

.....

.....

.....

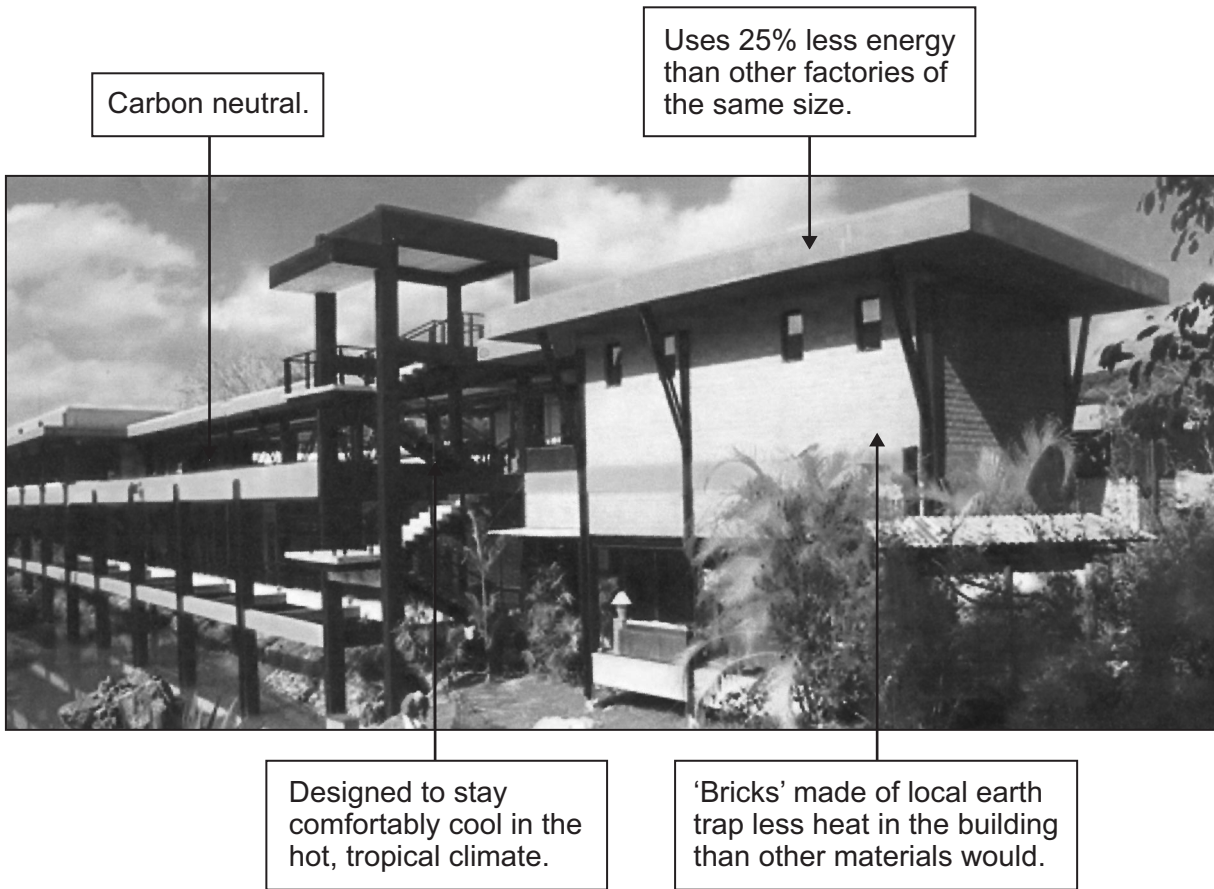
Question 3 continues on the next page

Turn over ►



3 (g) Study **Figure 12**. **Figure 12** gives information about a factory that has been designed to manage the impacts of industrial development sustainably.

Figure 12



Explain how the factory in **Figure 12** is an example of sustainable industrial development.

[6 marks]

.....

.....

.....

.....

.....

.....

.....

.....

.....

.....



.....

.....

.....

Extra space

.....

.....

.....

.....

.....

43

Turn over for the next question

Turn over ▶

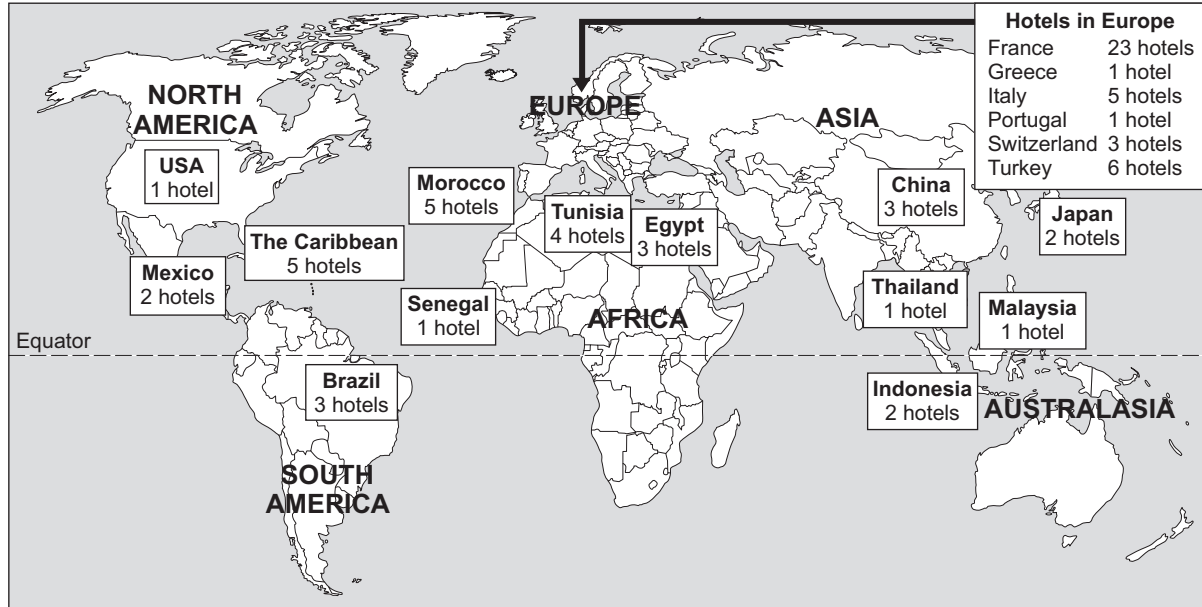


Investigating global tourism

Total for this question: 43 marks

4 (a) Study Figure 13. Figure 13 shows the location of hotels owned by a tourism company.

Figure 13



4 (a) (i) With the help of Figure 13, describe how tourism has become a global industry.

[4 marks]

.....

.....

.....

.....

.....

.....

.....

.....

.....

.....

.....

Extra space

.....

.....

.....



4 (a) (ii) Suggest reasons why the global tourism company has opened hotels in less developed countries such as Thailand and Indonesia.

[3 marks]

.....

.....

.....

.....

.....

.....

4 (b) Explain how the growth of tourism can create social and economic problems.
Use examples you have studied.

[6 marks]

.....

.....

.....

.....

.....

.....

.....

.....

.....

.....

.....

.....

.....

.....

.....

.....

Extra space

.....

.....

.....

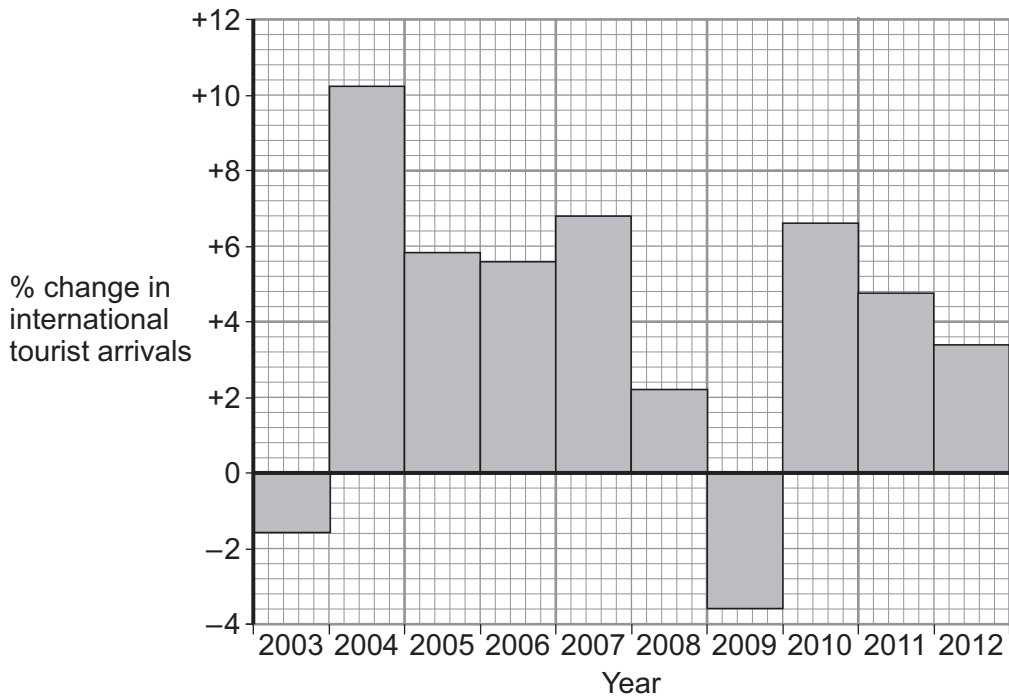
.....

Turn over ►



4 (c) Study **Figure 14**. **Figure 14** shows changes in international tourist arrivals between 2003 and 2012.

Figure 14



4 (c) (i) Describe the change in international tourist arrivals between 2010 and 2012.

Use **Figure 14**.

[2 marks]

.....

.....

.....

.....



4 (c) (ii) Suggest **two** ways in which international travel has an impact on the global environment.

Use **Figure 14** and your own knowledge.

[4 marks]

1

.....

.....

.....

2

.....

.....

.....

Question 4 continues on the next page

Turn over ►



- 4 (d)** The development gap is the difference in economic development between countries.
Study **Figure 15**. **Figure 15** gives information about Canada and Egypt in 2011.

Figure 15

Country	HDI	HDI ranking out of 187 countries	GNI	GNI ranking out of 187 countries
Canada	0.91	6	35 166	16
Egypt	0.64	113	5 269	107

Human Development Index (HDI) – a measure of quality of life from 0 (lowest) to 1 (highest)

Gross National Income (GNI) – average income (US\$) per year

- 4 (d) (i)** Describe the development gap between Canada and Egypt.

Use **Figure 15**.

[2 marks]

.....

.....

.....

.....



4 (d) (ii) Explain how tourism can help to raise standards of living and income.

Use **Figure 15** and your own knowledge.

[5 marks]

.....

.....

.....

.....

.....

.....

.....

.....

.....

.....

.....

Extra space

.....

.....

.....

.....

Question 4 continues on the next page

Turn over ►



4 (e) Explain how management and planning can reduce conflict in a tourist honeypot.

Use an example(s) you have studied.

[8 marks]
[SPaG 3 marks]

.....

.....

.....

.....

.....

.....

.....

.....

.....

.....

.....

.....

.....

.....

.....

.....

.....

.....

.....

.....

.....

.....

.....

Extra space

.....

.....

.....

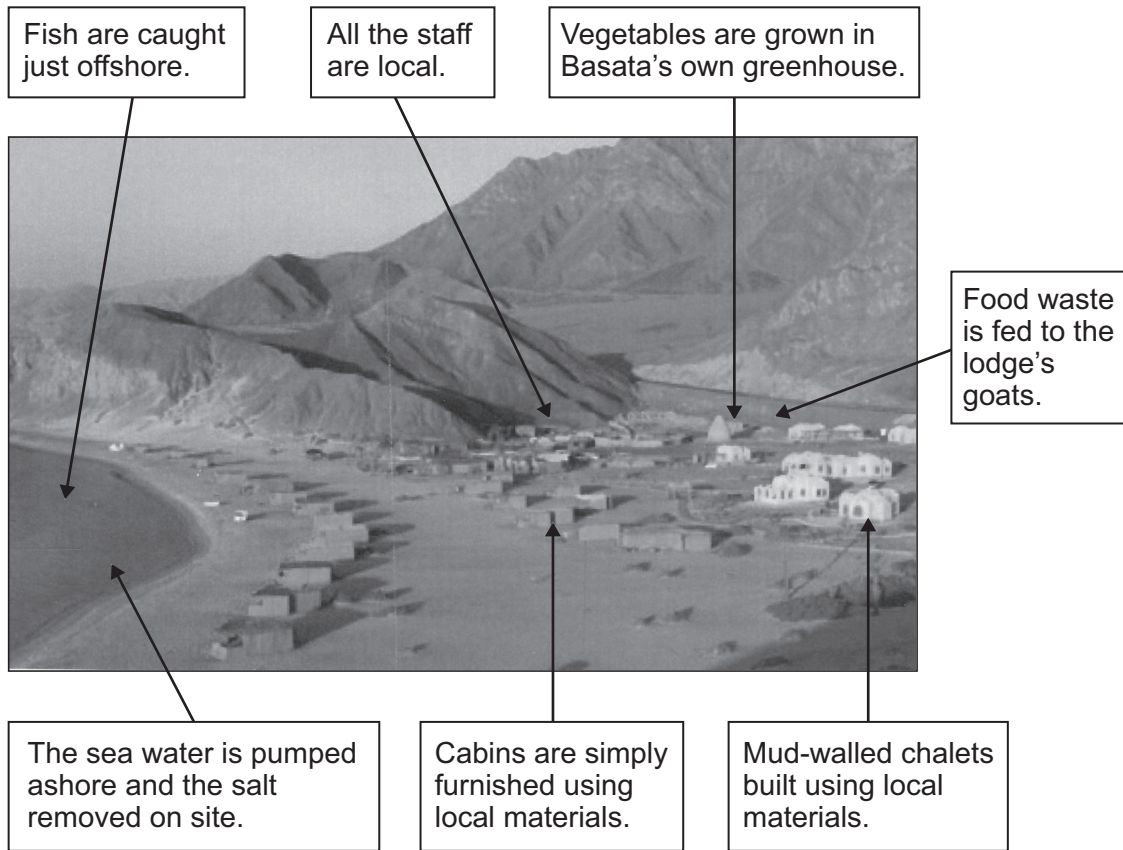
.....

.....



4 (f) Study **Figure 16**. **Figure 16** gives information about Basata Lodge. Basata Lodge is an ecotourism development in Egypt.

Figure 16



Explain how the ecotourism development in **Figure 16** is an example of sustainable tourism.

[6 marks]

.....

.....

.....

.....

.....

.....

.....

.....

.....

.....

Turn over ▶



.....

.....

.....

Extra space

.....

.....

.....

.....

.....

43

END OF QUESTIONS

Acknowledgement of copyright-holders and publishers

Permission to reproduce all copyright material has been applied for. In some cases, efforts to contact copyright holders have been unsuccessful and AQA will be happy to rectify any omissions of acknowledgements in future papers if notified.

- Figure 1: © United States Geological Survey (USGS)
- Figure 5: © United Nations
- Figure 10: Data Source: Financial Times
- Figure 12: © Holcim Foundation
- Figure 14: © UNWTO, 9284401513
- Figure 16: © Naftali Hilger

Copyright © 2014 AQA and its licensors. All rights reserved.

