

Centre Number						Candidate Number				
Surname										
Other Names										
Candidate Signature										



General Certificate of Secondary Education
Foundation Tier
June 2013

Geography (Specification B)

40352F

F

Unit 2 Hostile World

Wednesday 12 June 2013 9.00 am to 10.00 am

For this paper you must have:

- the insert (enclosed).

You may use a calculator.

Time allowed

- 1 hour

Instructions

- Use black ink or black ball-point pen. You may use pencil for maps, diagrams and graphs.
- Fill in the boxes at the top of this page.
- Answer **either** Section A (Questions 1 to 4) **or** Section B (Questions 5 to 8).
- You must answer the questions in the spaces provided. Do not write outside the box around each page or on blank pages.
- Do all rough work in this book. Cross through any work you do not want to be marked.
- Use your case studies to support your answers where appropriate.

Information

- The marks for questions are shown in brackets.
- The maximum mark for this paper is 56.
- You are reminded of the need for good English and clear presentation in your answers. Where applicable, questions should be answered in continuous prose. Quality of Written Communication will be assessed in all answers.
- Spelling, Punctuation and Grammar will be assessed in Questions 3(b) and 4(c) in Section A and in Questions 6(b) and 8(d) in Section B. The marks for Spelling, Punctuation and Grammar (**SPaG**) are shown below the mark allocation for each question.

For Examiner's Use	
Examiner's Initials	
Question	Mark
1a	
1b	
2a	
2b	
3a	
3b	
3c	
4a	
4b	
4c	
5a	
5b	
6a	
6b	
6c	
7a	
7b	
7c	
8a	
8b	
8c	
8d	
TOTAL	



J U N 1 3 4 0 3 5 2 F 0 1

Answer **either** Section A (Questions 1 to 4) **or** Section B (Questions 5 to 8).

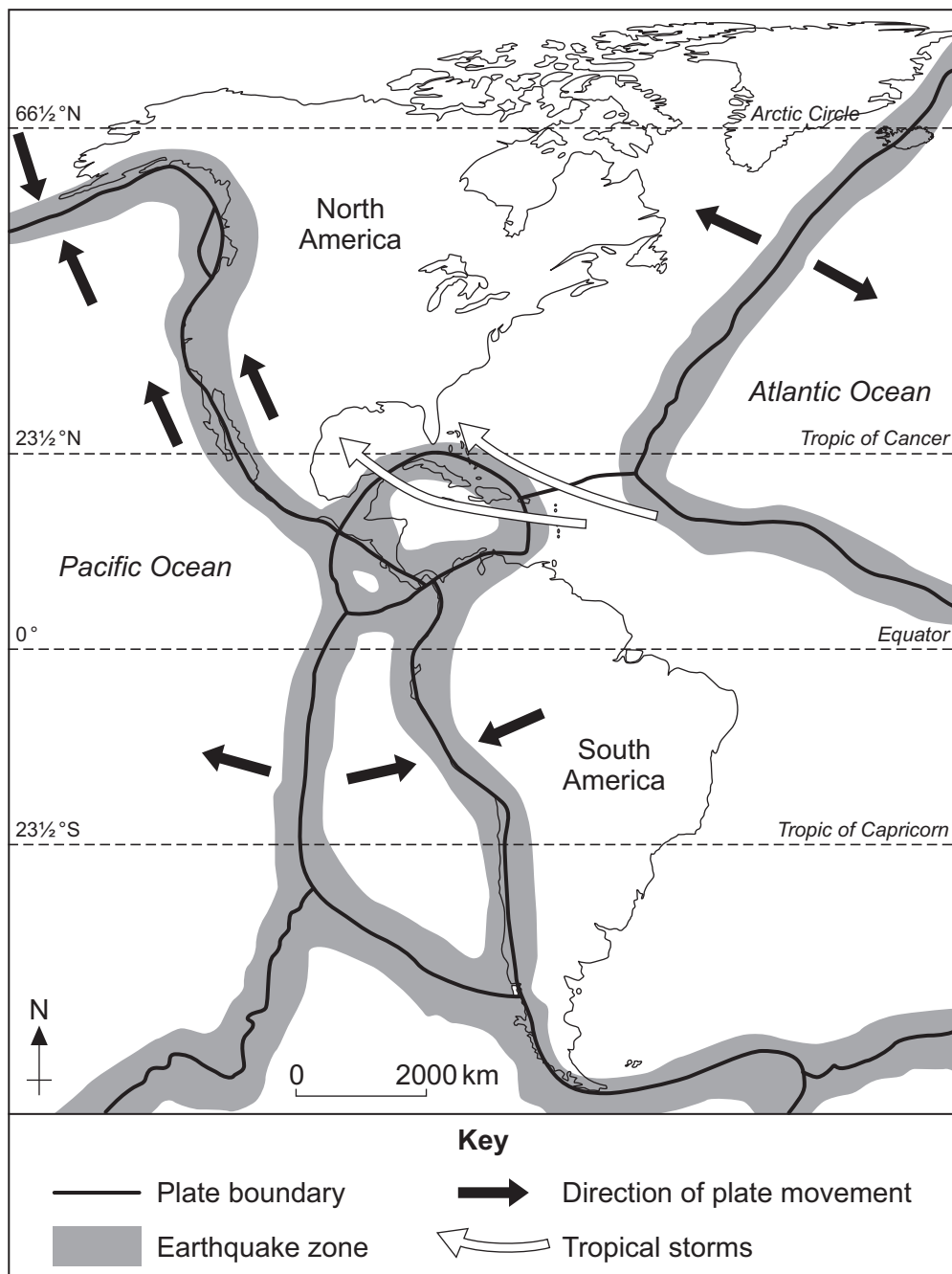
Section A – Living with Natural Hazards

Use case studies to support your answers where appropriate.

Total for this question: 7 marks

- 1 Study **Figure 1**. **Figure 1** shows information about natural hazards in North America and in South America.

Figure 1



1 (a) Complete the paragraph below. Use **Figure 1**.

Choose the **three** correct words from the list below.

North

short

eastern

South

long

western

Tropical storms affect the south and south-east coasts of
America. Earthquakes are found in , narrow zones and
mainly affect the edges of the continents.

(3 marks)

1 (b) Explain why **either** earthquakes **or** tropical storms occur.

Use **Figure 1** and your own knowledge.

.....
.....
.....
.....
.....
.....
.....
.....
.....

(4 marks)

Extra space

.....
.....
.....

7

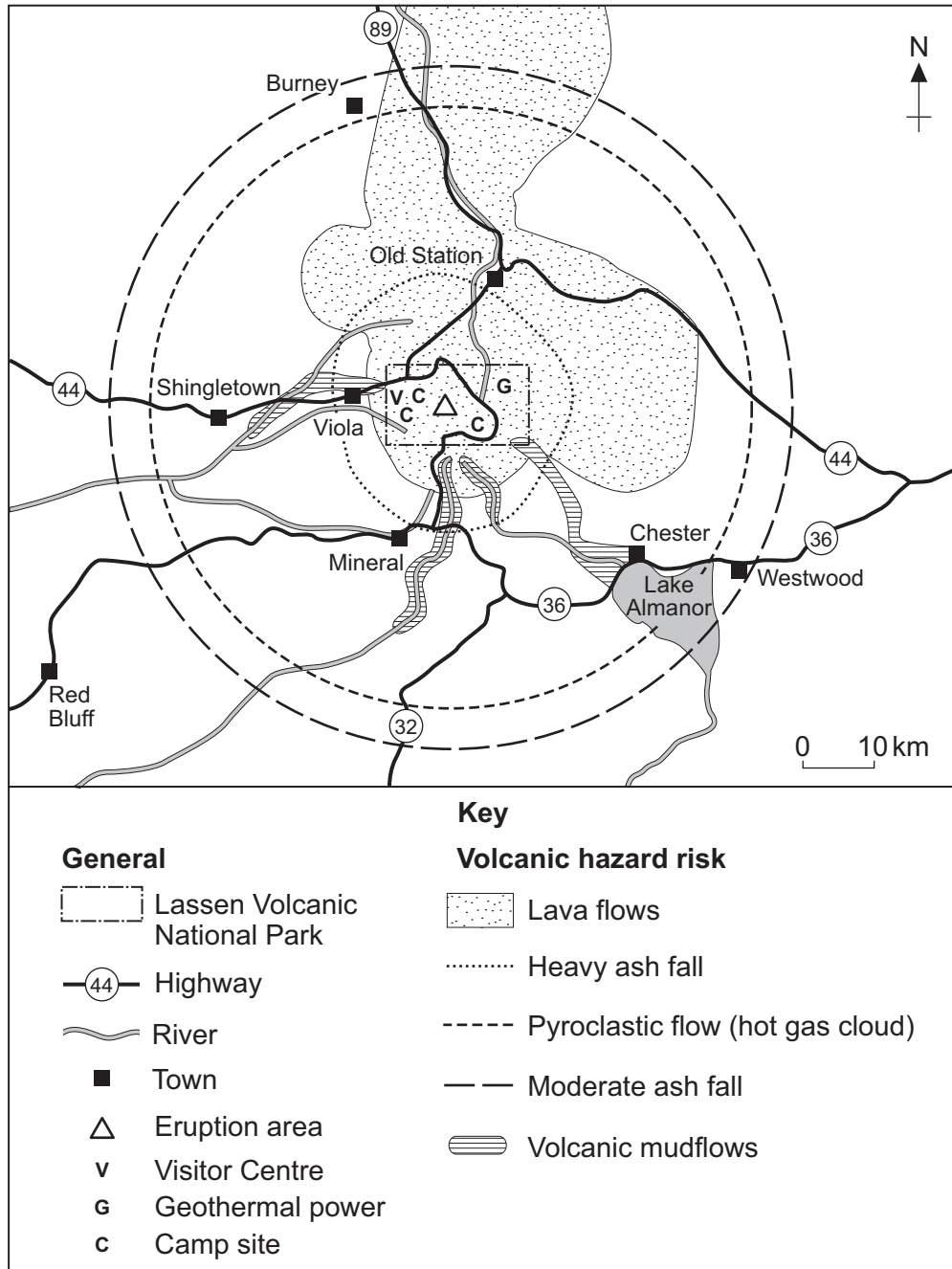
Turn over ►



Total for this question: 13 marks

2 (a) Study **Figure 2**. **Figure 2** shows a volcanic hazard risk map for an area in California in the United States (US).

Figure 2



2 (a) (i) Name the town shown on **Figure 2** that would be most at risk from lava flows.

.....

(1 mark)



2 (a) (ii) Complete the sentence below.

Circle the correct answer.

Most of the areas on **Figure 2** at risk from volcanic mudflows are to the

[**north / south**] of the eruption area.

(1 mark)

2 (a) (iii) Name the town shown on **Figure 2** that a volcanic eruption would affect the least.

.....

(1 mark)

2 (a) (iv) How far from the eruption area does the pyroclastic flow area extend?

Circle the correct answer.

20km

40km

60km

(1 mark)

2 (a) (v) Describe a safe evacuation route that the people of Chester could take if there is a volcanic eruption.

.....
.....
.....
.....

(2 marks)

2 (a) (vi) People continue to live in areas at risk from volcanic eruptions.

Give **two** reasons why.

1

.....

2

.....

(2 marks)

Question 2 continues on the next page

Turn over ►



Total for this question: 16 marks

- 3 Study **Figure 4**. **Figure 4** gives information about the six most costly tropical storms (hurricanes) in the US between 1900 and 2010.

Figure 4

Date of hurricane	Name of hurricane	US States most affected	Damage (billions US\$)	Rank
1989	Hugo	South Carolina	13.5	
1992	Andrew	Florida, Louisiana	48.1	2
2004	Charley	Florida	16.3	4
2004	Ivan	Florida, Alabama	15.5	
2005	Katrina	Florida, Louisiana, Mississippi	84.6	1
2005	Wilma	Florida	21.5	3

- 3 (a) (i) Complete **Figure 4**.

Add the rankings for hurricane Hugo and hurricane Ivan to the table.

(1 mark)

- 3 (a) (ii) Use **Figure 4** to decide which **three** of the following statements are true.

Tick the **three** correct boxes.

Hurricane Wilma was the most costly tropical storm to hit the US.	<input type="checkbox"/>
Florida is the US state most often affected by the six most costly tropical storms.	<input type="checkbox"/>
The most costly tropical storm hit the US in 2004.	<input type="checkbox"/>
Hurricane Katrina was the most costly tropical storm to hit the US.	<input type="checkbox"/>
The most costly tropical storm hit the US in 2005.	<input type="checkbox"/>
Alabama is the US state most often affected by the six most costly storms.	<input type="checkbox"/>

(3 marks)

Question 3 continues on the next page

Turn over ►



3 (b) Study **Figure 5** on the insert. **Figure 5** shows part of New Orleans, a city in the US, after a tropical storm.

Describe the effects of a tropical storm.

Use **Figure 5** and your own knowledge.

.....

.....

.....

.....

.....

.....

.....

.....

.....

.....

.....

.....

.....

.....

.....

.....

.....

.....

.....

.....

.....

.....

(5 marks)
SPaG: 3 marks

Extra space

.....

.....

.....

.....

.....



3 (c) Study **Figure 6**. **Figure 6** shows a tropical storm forecast map.

Figure 6

Figure 6, which shows a tropical storm forecast map, is not reproduced here due to third-party copyright constraints.

3 (c) (i) Match the three statements below to the letters **X**, **Y** and **Z** on **Figure 6**.

Write the correct letter in the box next to **each** statement.

Statement	Letter
Likely position of the tropical storm on 20 October.	
Likely position of the tropical storm on 21 October.	
Area that could be affected by the tropical storm.	

(2 marks)

Question 3 continues on the next page

Turn over ►



3 (c) (ii) Give **two** ways in which tropical storm forecasts might help to reduce the damaging effects of tropical storms.

1

.....

2

.....

(2 marks)

16



Total for this question: 20 marks

4 Study **Figure 7** on the insert. **Figure 7** shows information about wildfires and weather in Russia.

4 (a) (i) Complete the sentences below. Use **Figure 7**.

Circle the correct answer in **each** set of brackets.

During July 2010 [**0.75** / **7.5** / **17.5**] mm of rain fell on Moscow and temperatures were [**0.6** / **6.0** / **16.0**] °C above the average for July. In July 2010 the area of Russia that had the highest temperature above the average was at 53° north and [**20** / **30** / **40**] ° east.

(3 marks)

4 (a) (ii) From **Figure 7**, give **two** examples of the effects of the wildfires on the economy of Russia and **two** other effects of the wildfires on the people of Russia.

Complete the table below.

Effects on the economy of Russia	Other effects on the people of Russia
1	1
2	2

(4 marks)

Question 4 continues on the next page

Turn over ►



4 (b) Describe ways in which the wildfires in Russia could have been controlled.

Use **Figure 7** and your own knowledge.

.....

.....

.....

.....

.....

.....

.....

.....

(4 marks)

4 (c) The number of wildfires will increase in the future. This is because of climate change.

Do you agree?

Give reasons for your answer. Use **Figure 7** and your own knowledge.

.....

.....

.....

.....

.....

.....

.....

.....

.....

.....

.....

.....

.....

.....

.....

.....

.....

.....

.....

.....

(6 marks)

SPaG: 3 marks



Extra space

.....

.....

.....

.....

<hr/>
20

END OF SECTION A

Turn over ▶



Answer **either** Section A (Questions 1 to 4) **or** Section B (Questions 5 to 8).

Section B – The Challenge of Extreme Environments

Use case studies to support your answers where appropriate.

Total for this question: 7 marks

- 5** Study **Figure 8**. **Figure 8** shows information about extreme environments in North America and in South America.

Figure 8



5 (a) Complete the paragraph below. Use **Figure 8**.

Choose the **three** correct words from the list below.

- | | | |
|--------------|---------------|----------------|
| North | lower | eastern |
| South | higher | western |

Cold environments are found in the latitudes of
..... America. Hot desert environments are found along
the edges of the continents.

(3 marks)

5 (b) Explain the formation of **either** hot desert environments **or** cold environments.

Use **Figure 8** and your own knowledge.

.....

.....

.....

.....

.....

.....

.....

.....

.....

.....

(4 marks)

Extra space

.....

.....

.....

7

Turn over ►



Total for this question: 16 marks

- 6 (a)** Study **Figure 9**. **Figure 9** shows a map of territorial claims and oil/gas reserves in the Arctic.

Figure 9

Figure 9, which shows a map of territorial claims and oil/gas reserves in the Arctic, is not reproduced here due to third-party copyright constraints.

- 6 (a) (i)** How many countries shown on **Figure 9** have claimed territory in the Arctic?

.....

(1 mark)

- 6 (a) (ii)** What is the maximum straight line distance across the area of permanent ice?

Circle the correct answer.

3200km

4800km

6400km

(1 mark)



Extra space

.....

.....

.....

.....

6 (c) Give **two** ways of managing tourism in a cold environment.

1

.....

2

.....

(2 marks)

16



Total for this question: 13 marks

- 7 (a)** Study **Figure 11**. **Figure 11** gives information about the amount of desertified land in six continents.

Figure 11

Continent	Desertified land		Amount of desertified land classed as 'extreme' (million hectares)
	Total (million hectares)	Rank	
Africa	495	2	10
Asia	747	1	2
Australasia	100		0
Europe	207	4	1
North America	150		0
South America	235	3	0

- 7 (a) (i)** Complete **Figure 11**.

Add the rankings for Australasia and North America to the table.

(1 mark)

- 7 (a) (ii)** Use **Figure 11** to decide which **three** of the following statements are true.

Tick the **three** correct boxes.

The continent with the largest area of desertified land is Africa.	<input type="checkbox"/>
Three continents do not have areas of 'extreme' desertified land.	<input type="checkbox"/>
The continent with the largest area of 'extreme' desertified land is Europe.	<input type="checkbox"/>
The continent with the largest area of desertified land is Asia.	<input type="checkbox"/>
The continent with the largest area of 'extreme' desertified land is Africa.	<input type="checkbox"/>
Five continents do not have areas of 'extreme' desertified land.	<input type="checkbox"/>

(3 marks)

Question 7 continues on the next page

Turn over ►



- 7 (b) Study **Figure 12**. **Figure 12** gives information about desertification in Mali, a country in Africa.

Figure 12

A dust cloud spread over hundreds of kilometres as the wind blew across the bare earth. The fine dust was carried into the atmosphere and winds transported it across oceans and damaged coral reefs in the Caribbean. The wildlife such as antelopes, warhogs and leopards that once lived in the area has mostly gone. Many villages in the Sahel region of Mali became uninhabitable and people left to go to Bamako, the overcrowded capital city. In the villages that remain, the wells are filling with sand because the water table has fallen. Women balance large clay jars of water or huge loads of firewood on their heads. Each year the women have to travel further for the firewood and water they need. Last year many villages had no food. People were not able to grow crops on the dry land and there was little for their goats to eat. Famine is now common.

From **Figure 12**, give **two** effects of desertification on people and **two** effects of desertification on the environment.

Complete the table below.

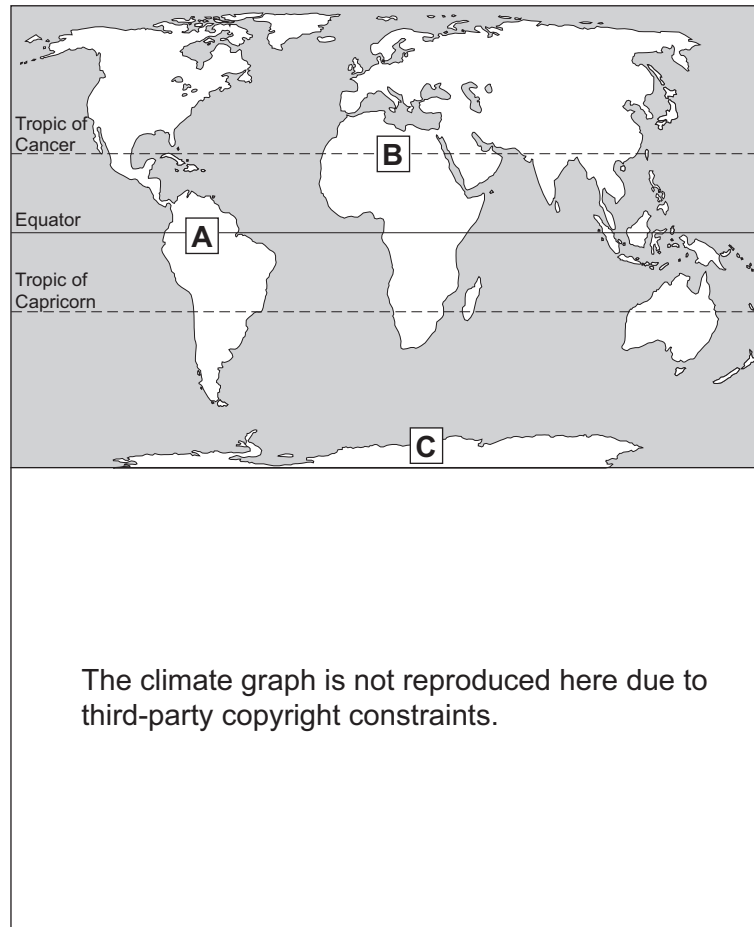
Effects on people	Effects on the environment
1	1
2	2

(4 marks)



Total for this question: 20 marks

8 (a) Study the map of the world and the climate graph below.



8 (a) (i) Which of the places (**A**, **B** or **C**) has the climate shown in the graph?

.....

(1 mark)

8 (a) (ii) Describe the yearly pattern of temperature shown on the graph.

.....
.....
.....
.....

(2 marks)



8 (b) Explain why areas of tropical rainforest have high yearly rainfall totals.

.....

.....

.....

.....

.....

.....

.....

.....

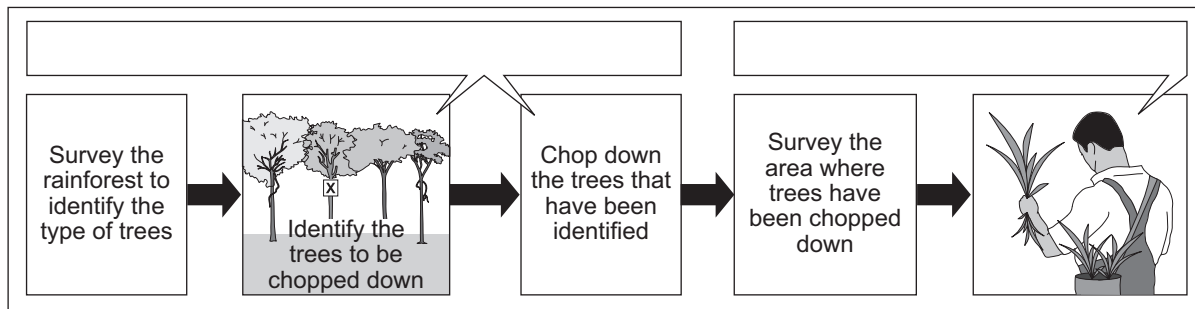
.....

.....

(4 marks)

8 (c) Study **Figure 14**. **Figure 14** shows a method of managing the tropical rainforest environment.

Figure 14



8 (c) (i) Label **Figure 14**. Choose the **two** correct answers from those given below.

- Selective logging
- Ecotourism
- Reforestation

(2 marks)

8 (c) (ii) Give **two** advantages of the method of managing the tropical rainforest environment shown in **Figure 14**.

1

.....

2

.....

(2 marks)

Turn over ►



There are no questions printed on this page

**DO NOT WRITE ON THIS PAGE
ANSWER IN THE SPACES PROVIDED**



There are no questions printed on this page

**DO NOT WRITE ON THIS PAGE
ANSWER IN THE SPACES PROVIDED**



There are no questions printed on this page

**DO NOT WRITE ON THIS PAGE
ANSWER IN THE SPACES PROVIDED**



There are no questions printed on this page

**DO NOT WRITE ON THIS PAGE
ANSWER IN THE SPACES PROVIDED**

ACKNOWLEDGEMENT OF COPYRIGHT-HOLDERS AND PUBLISHERS

Permission to reproduce all copyright material has been applied for. In some cases, efforts to contact copyright-holders have been unsuccessful and AQA will be happy to rectify any omissions of acknowledgements in future papers if notified.

Figure 2: © U.S. Geological Survey (USGS)

Figure 4: adapted from 'The Deadliest, Costliest, and Most Intense United States Tropical Cyclones from 1851 to 2006', National Oceanic and Atmospheric Administration (NOAA).

Figure 8: © UN Millennium Ecosystem Assessment

Figure 11: Food and Agriculture Organization of the United Nations
<http://www.fao.org/docrep/003/W1358e/W1358e16.jpg>

Figure 12: © Alex Shoumatoff

Copyright © 2013 AQA and its licensors. All rights reserved.

