

Centre Number						Candidate Number				
Surname										
Other Names										
Candidate Signature										



General Certificate of Secondary Education  
Higher Tier  
January 2013

# Geography (Specification B)

40352H

**H**

Unit 2 Hostile World

Friday 25 January 2013 9.00 am to 10.00 am

**For this paper you must have:**

- the insert (enclosed).

You may use a calculator.

**Time allowed**

- 1 hour

**Instructions**

- Use black ink or black ball-point pen. You may use pencil for maps, diagrams and graphs.
- Fill in the boxes at the top of this page.
- Answer **either** Section A (Questions 1 to 4) **or** Section B (Questions 5 to 8).
- You must answer the questions in the spaces provided. Do not write outside the box around each page or on blank pages.
- Do all rough work in this book. Cross through any work you do not want to be marked.
- Use your case studies to support your answers where appropriate.

**Information**

- The marks for questions are shown in brackets.
- The maximum mark for this paper is 56.
- You are reminded of the need for good English and clear presentation in your answers. Where applicable, questions should be answered in continuous prose. Quality of Written Communication will be assessed in all answers.
- Spelling, Punctuation and Grammar will be assessed in Questions 3(a)(ii) and 4(b) in Section A and in Questions 6(a)(ii) and 8(b) in Section B. The marks for Spelling, Punctuation and Grammar (**SPaG**) are shown below the mark allocation for each question.

For Examiner's Use	
Examiner's Initials	
Question	Mark
1a	
1b	
1c	
1d	
2a	
2b	
3a	
3b	
4a	
4b	
5a	
5b	
5c	
6a	
6b	
7a	
7b	
8a	
8b	
<b>TOTAL</b>	



J A N 1 3 4 0 3 5 2 H 0 1

Answer **either** Section A (Questions 1 to 4) **or** Section B (Questions 5 to 8).

**Section A – Living with Natural Hazards**

Use case studies to support your answers where appropriate.

**Total for this question: 16 marks**

**1** Study **Figure 1** on the insert. **Figure 1** shows information about natural hazards in different parts of the world.

**1 (a)** Describe the distribution of **either** earthquake zones **or** tropical storms as shown on **Figure 1**.

Chosen natural hazard .....

.....  
.....  
.....  
.....

*(2 marks)*

**1 (b)** Explain why **one** of the types of natural hazard shown on **Figure 1** occurs.

You may use a diagram.

Chosen natural hazard .....

.....  
.....  
.....  
.....  
.....  
.....  
.....  
.....  
.....  
.....



.....

.....

*Extra space* .....

.....

.....

.....

.....

(6 marks)

**Question 1 continues on the next page**

**Turn over ▶**





**Turn over for the next question**

**DO NOT WRITE ON THIS PAGE  
ANSWER IN THE SPACES PROVIDED**

**Turn over ►**

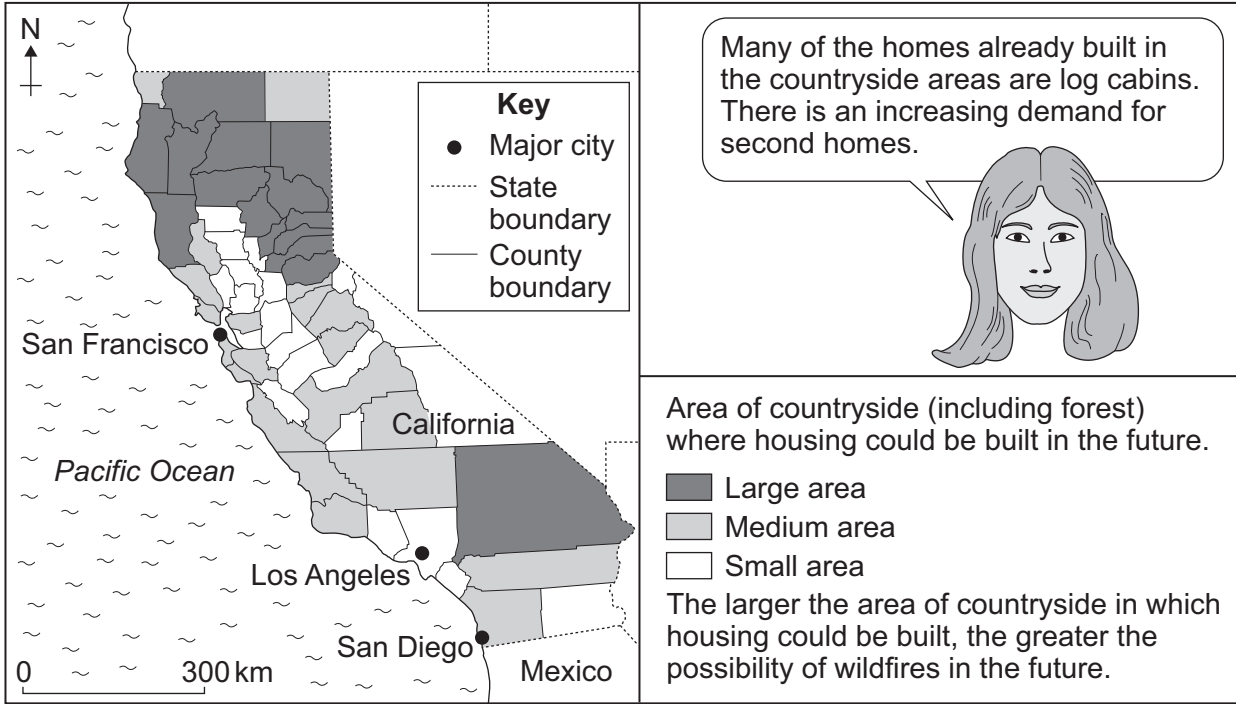


0 5

Total for this question: 11 marks

2 (a) Study Figure 3. Figure 3 shows information about the possible future development of housing in countryside areas in the counties of California (United States).

Figure 3



2 (a) (i) Describe the distribution of counties with a large area of countryside where housing could be built in the future.

.....

.....

.....

.....

.....

.....

(3 marks)



**2 (a) (ii)** The cost of damage from wildfires and the cost of fire fighting could increase in the future. Explain why.

Use **Figure 3** and your own knowledge.

.....

.....

.....

.....

.....

.....

.....

.....

.....

.....

.....

.....

.....

.....

.....

(5 marks)

*Extra space* .....

.....

.....

.....

.....

.....

**Question 2 continues on the next page**

**Turn over ►**



**2 (b)** Study **Figure 4**. **Figure 4** shows part of a newspaper article about a scheme to reduce the damage from wildfires in California.

**Figure 4**

**Wildfire Law**

Under California law, all residents in countryside areas at risk from wildfires have to clear the land within a 30 metre radius of their homes.

Suggest how this scheme can reduce the damage from wildfires.

.....

.....

.....

.....

.....

.....

(3 marks)

11
----





**Turn over for the next question**

**DO NOT WRITE ON THIS PAGE  
ANSWER IN THE SPACES PROVIDED**

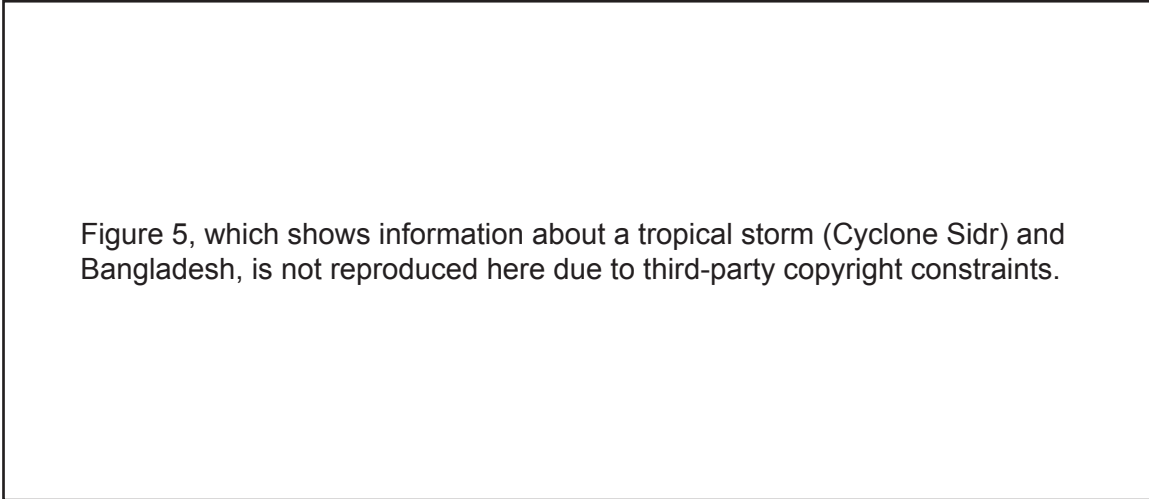
**Turn over ►**



**Total for this question: 15 marks**

- 3 (a)** Study **Figure 5**. **Figure 5** gives information about a tropical storm (Cyclone Sidr) and Bangladesh (a less developed country).

**Figure 5**



- 3 (a) (i)** Describe the track of Cyclone Sidr as shown on **Figure 5**.

.....  
.....  
.....  
.....  
.....  
.....

*(3 marks)*



3 (a) (ii) Explain why Cyclone Sidr caused a lot of damage in Bangladesh.

Use **Figure 5** and your own knowledge.

.....

.....

.....

.....

.....

.....

.....

.....

.....

.....

.....

.....

.....

.....

.....

.....

.....

.....

.....

.....

(5 marks)  
**SPaG: 3 marks**

*Extra space* .....

.....

.....

.....

.....

.....

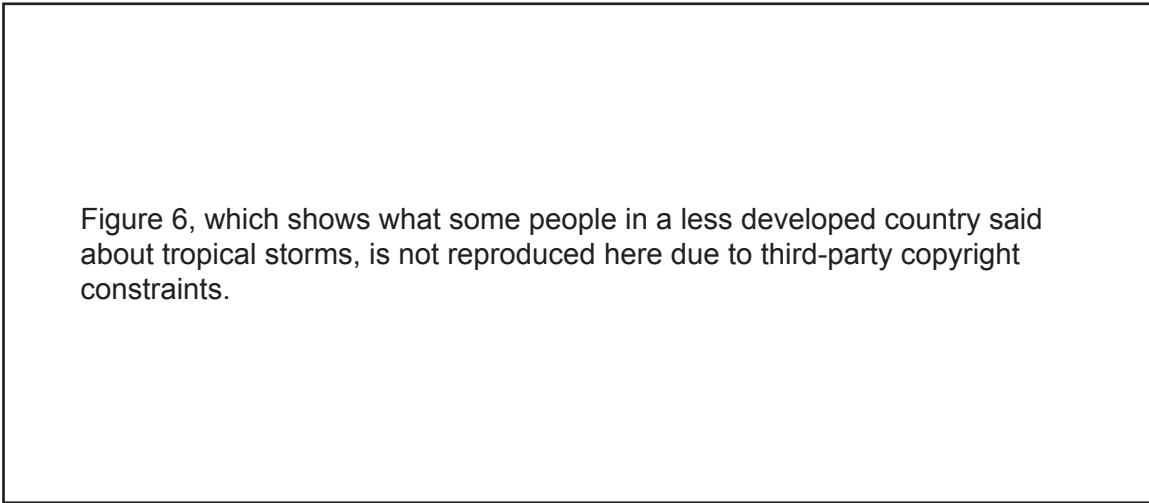
**Question 3 continues on the next page**

**Turn over ►**



**3 (b)** Study **Figure 6**. **Figure 6** shows what some people in a less developed country said about tropical storms.

**Figure 6**



Suggest how the damaging effects of tropical storms can be reduced in a less developed country.

.....

.....

.....

.....

.....

.....

.....

.....

(4 marks)

*Extra space* .....

.....

.....

.....

15
----





.....  
.....  
.....  
.....  
.....

(8 marks)  
**SPaG: 3 marks**

*Extra space* .....

.....  
.....  
.....  
.....  
.....  
.....

14

**END OF SECTION A**



**There are no questions printed on this page**

**DO NOT WRITE ON THIS PAGE  
ANSWER IN THE SPACES PROVIDED**

**Turn over ►**



Answer **either** Section A (Questions 1 to 4) **or** Section B (Questions 5 to 8).

**Section B – The Challenge of Extreme Environments**

Use case studies to support your answers where appropriate.

**Total for this question: 16 marks**

**5** Study **Figure 8** on the insert. **Figure 8** shows extreme environments in different parts of the world.

**5 (a) (i)** Choose **one** of the extreme environments shown on **Figure 8**.

Describe the distribution of the extreme environment that you have chosen.

Chosen extreme environment .....

.....  
.....  
.....  
.....

*(2 marks)*

**5 (a) (ii)** Explain how the climate affects the vegetation in **one** of the extreme environments shown on **Figure 8**.

Chosen extreme environment .....

.....  
.....  
.....  
.....  
.....  
.....  
.....  
.....  
.....  
.....  
.....





.....  
.....  
(6 marks)

Extra space .....

.....  
.....  
.....  
.....

**5 (b)** Study **Figure 9** on the insert. **Figure 9** shows how surface temperatures might change by 2070.

Describe the predicted changes in surface temperatures over the oceans.

.....  
.....  
.....  
.....  
.....  
.....  
(3 marks)

**Question 5 continues on the next page**

**Turn over ►**





**Total for this question: 13 marks**

**6 (a)** Study **Figure 10**. **Figure 10** gives information about the risk of desertification in Spain.

**Figure 10**

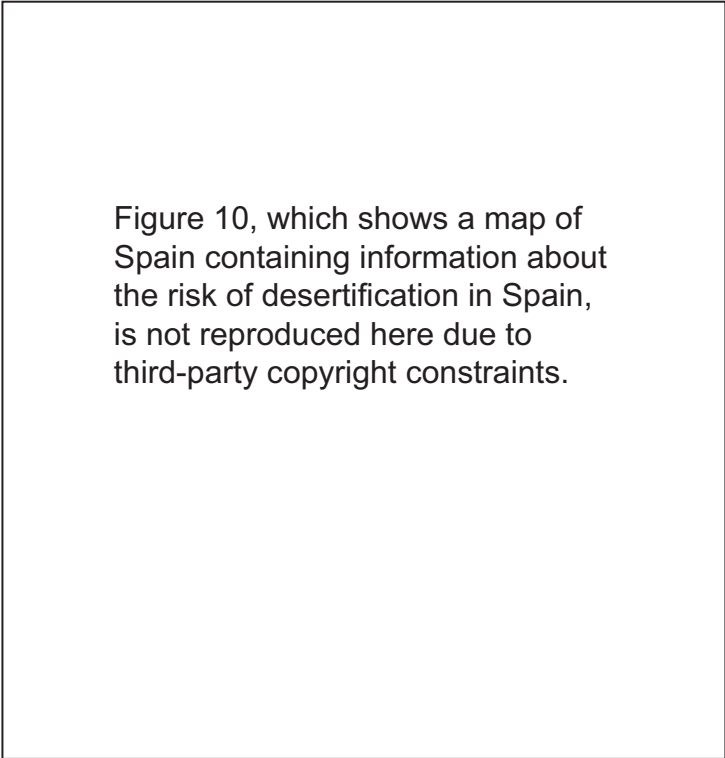


Figure 10, which shows a map of Spain containing information about the risk of desertification in Spain, is not reproduced here due to third-party copyright constraints.

**Spain warns ‘desert is spreading’**

Large areas of Spain are at risk of being turned into a desert. The population along the Mediterranean coast of Spain continues to increase and more holiday homes and other tourist developments are built each year. This is putting pressure on water resources.

**6 (a) (i)** Describe the distribution of areas with a very high risk of desertification.

.....

.....

.....

.....

*(2 marks)*

**Question 6 continues on the next page**

**Turn over ►**



**6 (a) (ii)** Explain why some areas are at risk from desertification.

Use **Figure 10** and your own knowledge.

.....

.....

.....

.....

.....

.....

.....

.....

.....

.....

.....

.....

.....

.....

.....

.....

.....

.....

.....

.....

.....

.....

(5 marks)  
**SPaG: 3 marks**

*Extra space* .....

.....

.....

.....

.....

.....



**6 (b)** Study **Figure 11**. **Figure 11** shows part of a newspaper article about a scheme to reduce desertification.

**Figure 11**

**Prevention is better than cure**

A local authority in a rural area of Tunisia in North Africa is trying to encourage a 'culture of prevention' among local farmers. Meetings have been held to discuss how improving grazing practices can reduce desertification.

Suggest how this scheme can reduce desertification.

.....

.....

.....

.....

.....

.....

.....

(3 marks)

13
----

**Turn over for the next question**

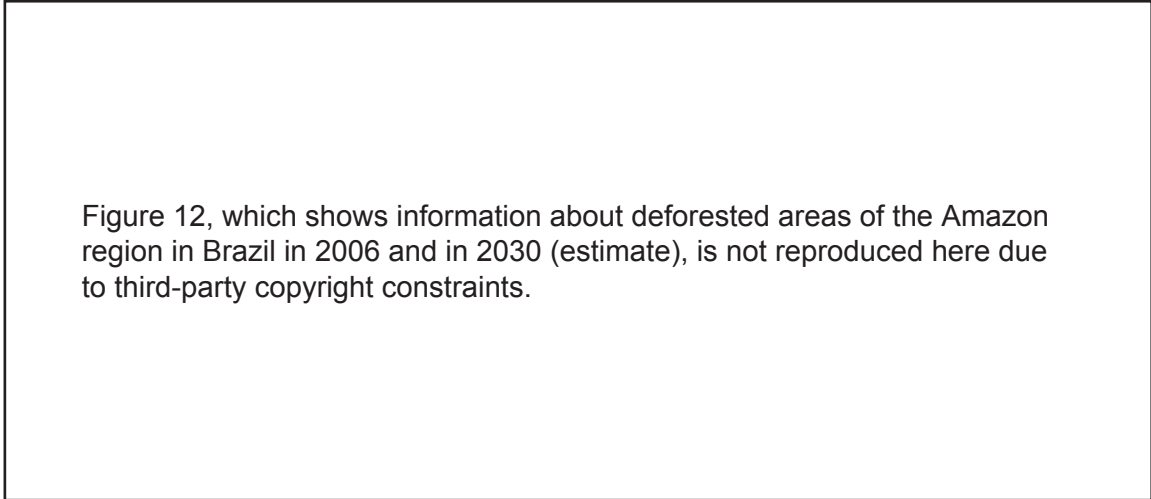
**Turn over ►**



**Total for this question: 13 marks**

- 7 (a)** Study **Figure 12**. **Figure 12** shows information about deforested areas of the Amazon region of Brazil between 2006 and 2030 (estimate).

**Figure 12**



- 7 (a) (i)** Describe the changes to deforestation in the Amazon region as shown in **Figure 12**.

.....

.....

.....

.....

.....

.....

.....

.....

.....

*(4 marks)*



**7 (a) (ii)** Explain the likely effects of deforestation on the Amazon region.

Use **Figure 12** and your own knowledge.

.....

.....

.....

.....

.....

.....

.....

.....

.....

.....

.....

.....

(5 marks)

*Extra space* .....

.....

.....

.....

.....

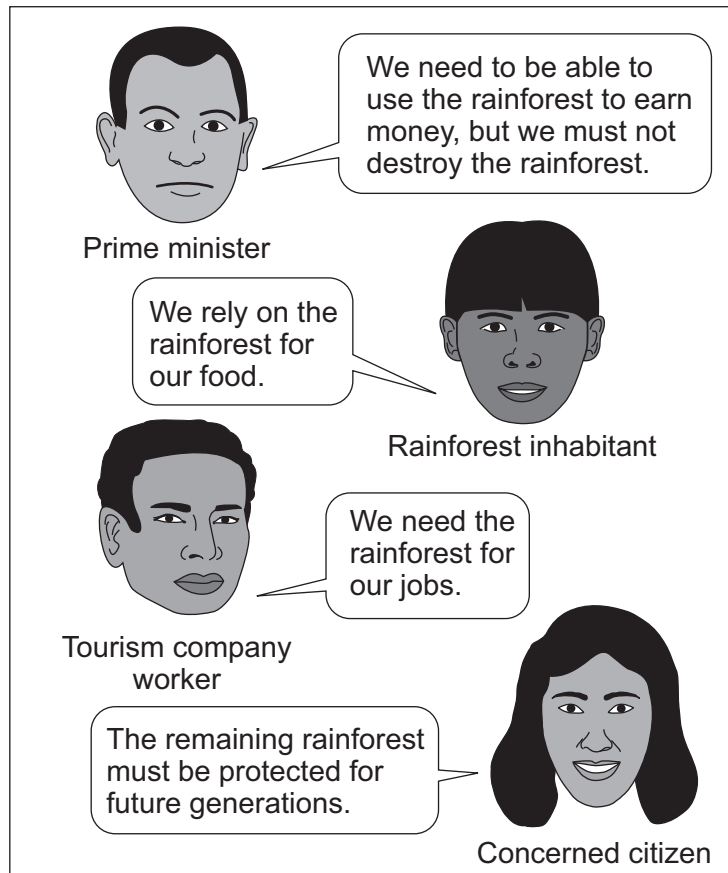
**Question 7 continues on the next page**

**Turn over ►**



7 (b) Study Figure 13. Figure 13 shows what some people say about the use of tropical rainforest.

Figure 13



Suggest how the tropical rainforest environment can be used sustainably.

.....

.....

.....

.....

.....

.....

.....

.....

.....

.....

(4 marks)

Extra space .....

.....

.....

.....

.....

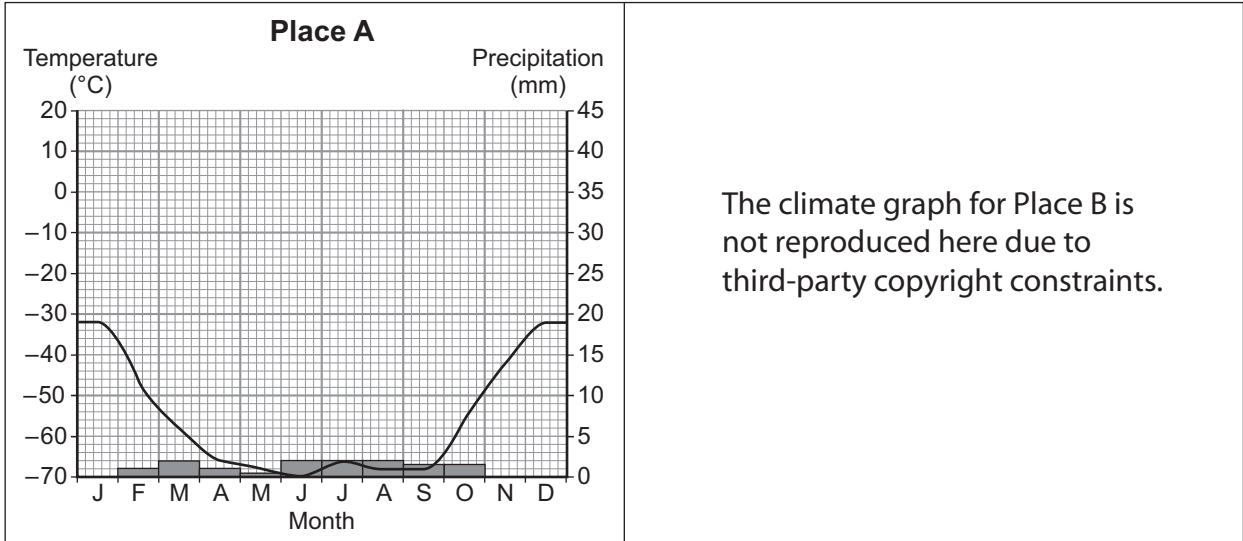




**Total for this question: 14 marks**

**8 (a)** Study **Figure 14**. **Figure 14** shows climate graphs for two places (**A** and **B**) in cold environments.

**Figure 14**



The climate graph for Place B is not reproduced here due to third-party copyright constraints.

Which place (**A** or **B**) has a tundra climate? Give reasons for your answer.

Place chosen .....

.....

.....

.....

.....

.....

.....

.....

(3 marks)

**Question 8 continues on the next page**

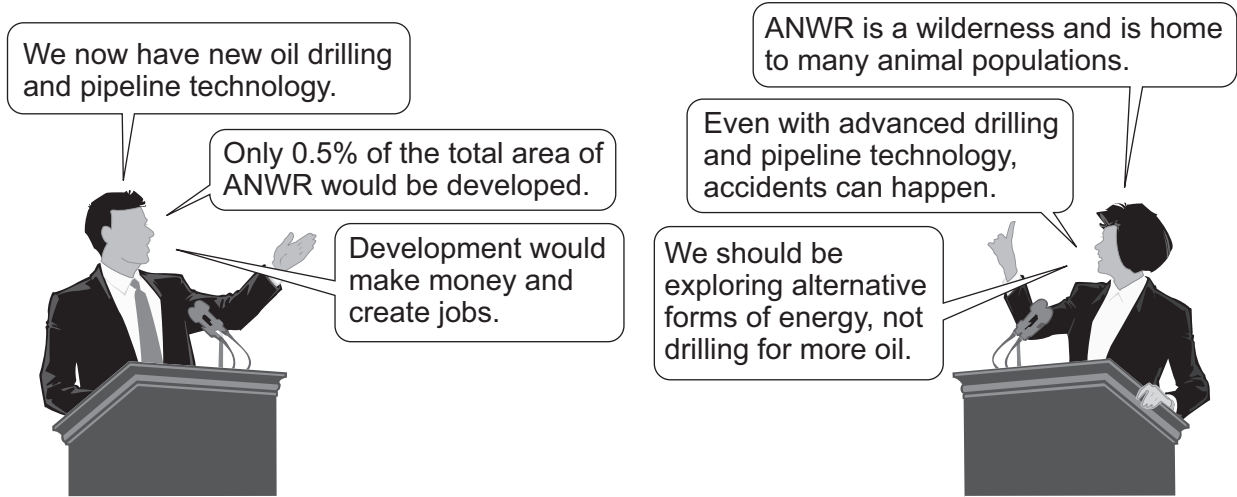
**Turn over ►**



8 (b) Study Figure 15. Figure 15 shows information about the issue of development in a cold environment.

Figure 15

The Arctic National Wildlife Refuge (ANWR) is a protected area of Alaska (United States). Some people want more development of the oil industry in a part of the ANWR. Some people do not want this development.



More development of cold environments should be allowed.

Do you agree?

Tick the box of your choice.

YES  NO

Give reasons for your choice. Use Figure 15 and your own knowledge.

.....

.....

.....

.....

.....

.....

.....

.....

.....

.....



.....

.....

.....

.....

.....

.....

.....

.....

.....

(8 marks)  
**SPaG: 3 marks**

*Extra space* .....

.....

.....

.....

.....

.....

.....

<hr/>
14

**END OF QUESTIONS**



**There are no questions printed on this page**

**DO NOT WRITE ON THIS PAGE  
ANSWER IN THE SPACES PROVIDED**

**ACKNOWLEDGEMENT OF COPYRIGHT-HOLDERS AND PUBLISHERS**

Permission to reproduce all copyright material has been applied for. In some cases, efforts to contact copyright-holders have been unsuccessful and AQA will be happy to rectify any omissions of acknowledgements in future papers if notified.

Figure 3: © Headwaters Economics <http://www.headwaterseconomics.org/wildfire>  
Figure 4: Wildfire Awareness Week, Monday May 3 2010 <http://wildfiretoday.com/tag/prevention>  
Figures 5 and 6: United Nations  
Figures 10 and 11: Copyright Guardian News & Media Ltd 2005  
Figure 12: Woods Hole Research Centre and WWF  
Figure 14: © coolantartica.com

Copyright © 2013 AQA and its licensors. All rights reserved.

