

Centre Number						Candidate Number				
Surname										
Other Names										
Candidate Signature										

For Examiner's Use	
Examiner's Initials	
Question	Mark
1	
2	
TOTAL	



General Certificate of Secondary Education  
Foundation Tier  
June 2012

# Geography (Specification B)

40353F

**F**

Unit 3 Investigating the Shrinking World

Monday 25 June 2012 9.00 am to 10.00 am

**For this paper you must have:**

- the insert (enclosed).
- You may use a calculator.

**Time allowed**

- 1 hour

**Instructions**

- Use black ink or black ball-point pen. You may use pencil for maps, diagrams and graphs.
- Fill in the boxes at the top of this page.
- Answer **either** Section A (Question 1) **or** Section B (Question 2).
- You must answer the questions in the spaces provided. Do not write outside the box around each page or on blank pages.
- Do all rough work in this book. Cross through any work you do not want to be marked.
- Use case studies to support your answers where appropriate.

**Information**

- The marks for questions are shown in brackets.
- The maximum mark for this paper is 50.
- You are reminded of the need for good English and clear presentation in your answers. Where applicable, questions should be answered in continuous prose. Quality of Written Communication will be assessed in all answers.



J U N 1 2 4 0 3 5 3 F 0 1

Answer **either** Section A (Question 1) **or** Section B (Question 2).

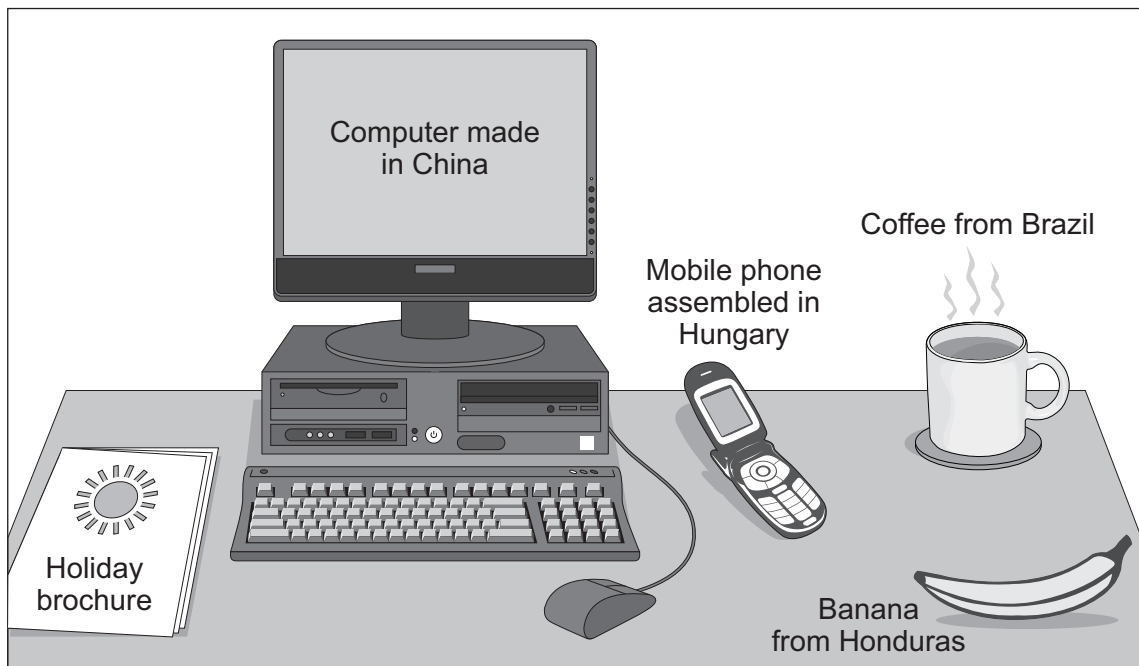
**Section A – Investigating the Globalisation of Industry**

Use case studies to support your answers where appropriate.

**Total for this question: 50 marks**

- 1 (a)** Study **Figure 1**. Anatoly is a student who lives in the United Kingdom (UK). **Figure 1** shows some of his connections with the world.

**Figure 1**



- 1 (a) (i)** Complete the sentences below.  
Use **Figure 1**. Circle the correct answer in **each** set of brackets.

The objects on Anatoly's desk are examples of his global

[ **production** / **development** / **consumption** ].

Manufactured objects on Anatoly's desk include his

[ **banana** / **computer** / **holiday** ].

(2 marks)



**1 (a) (ii)** What is globalisation? Use **Figure 1** and your own knowledge.

.....

.....

.....

.....

.....

.....

.....

.....

.....

.....

*(4 marks)*

*Extra space* .....

.....

.....

.....

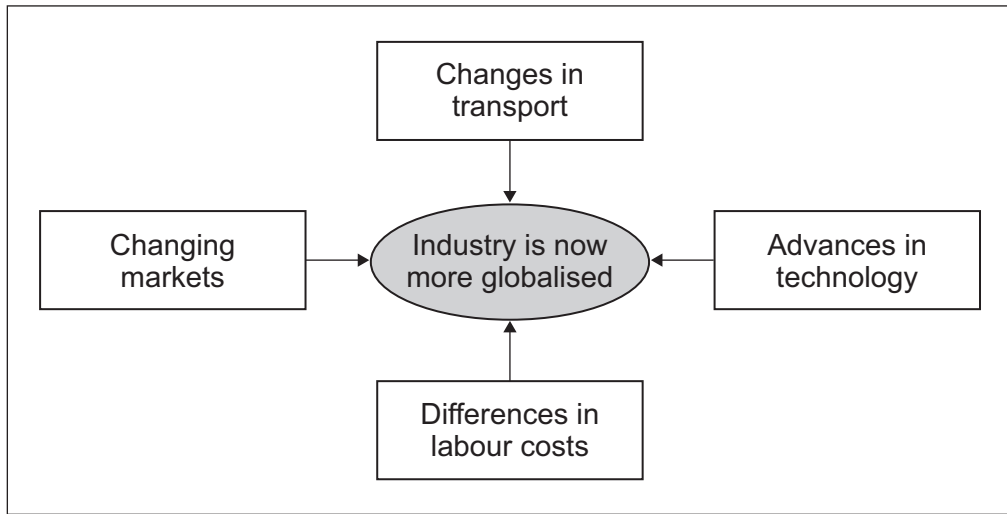
**Question 1 continues on the next page**

**Turn over ►**



1 (b) Study **Figure 2**. **Figure 2** shows four reasons why industry is now more globalised.

**Figure 2**



Choose **three** reasons from **Figure 2**. Suggest how **each** is helping industry to become more globalised.

Reason 1 .....

.....

.....

.....

Reason 2 .....

.....

.....

.....

Reason 3 .....

.....

.....

.....

(6 marks)



**Question 1 continues on the next page**

**DO NOT WRITE ON THIS PAGE  
ANSWER IN THE SPACES PROVIDED**

**Turn over ►**



0 5

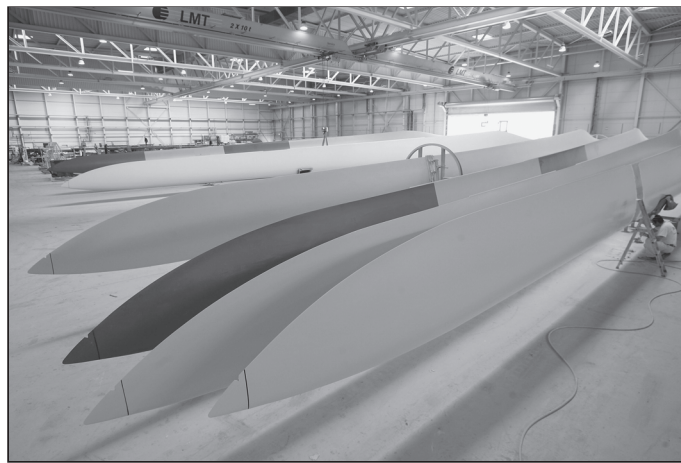
- 1 (c) Study **Figure 3**. **Figure 3** is part of a news article about proposed wind turbine factories in the UK.

**Figure 3**

**Third transnational corporation announces UK wind energy investment**

The German company Siemens has today announced that it is to build an £80 million wind turbine factory in the UK. This factory will employ 700 people and will create 1500 jobs elsewhere in the UK.

This announcement is the third major boost to the UK's wind energy industry in the past month after the Japanese company Mitsubishi announced it is to invest £100 million. The American company GE confirmed last week that it will invest £99 million in a UK factory to make wind turbines.



Wind turbine factory

- 1 (c) (i) Tick the correct box to show whether **each** statement is **true** or **false**. Use **Figure 3**.

Statement	True (✓)	False (✓)
Mitsubishi is a transnational corporation.		
GE is making the largest investment in wind energy.		

(2 marks)



1 (c) (ii) Give **three** benefits that the opening of new factories could bring to an area.  
Use **Figure 3** to help you.

1 .....

.....

2 .....

.....

3 .....

.....

(3 marks)

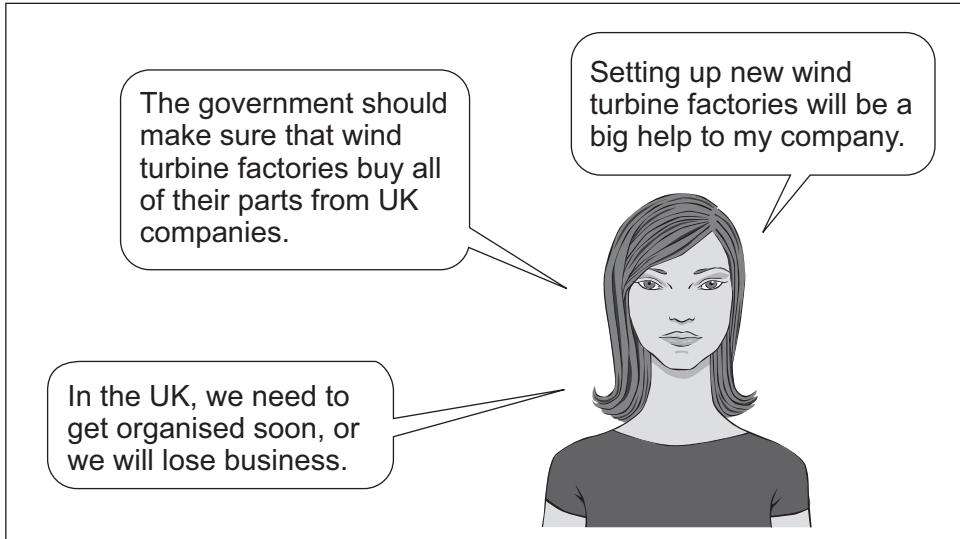
**Question 1 continues on the next page**

**Turn over ►**



1 (d) Study **Figure 4**. **Figure 4** shows comments made by the manager of a factory in the UK. Her factory could supply parts to the Siemens wind turbine factory shown in **Figure 3**.

**Figure 4**



1 (d) (i) Complete these sentences.

1 The manager in **Figure 4** thinks that the government should make sure that wind turbine factories buy all of their parts from UK companies because

.....

.....

.....

.....

2 The manager in **Figure 4** thinks that wind turbine factories should be built as soon as possible because

.....

.....

.....

.....

(4 marks)





1 (d) (ii) Suggest why factory managers in less developed countries might not agree with the comments in **Figure 4**.

.....  
.....  
.....  
.....

(2 marks)

1 (d) (iii) Give **three** problems that the growth of transnational corporations can create.

1 .....

.....

2 .....

.....

3 .....

.....

(3 marks)

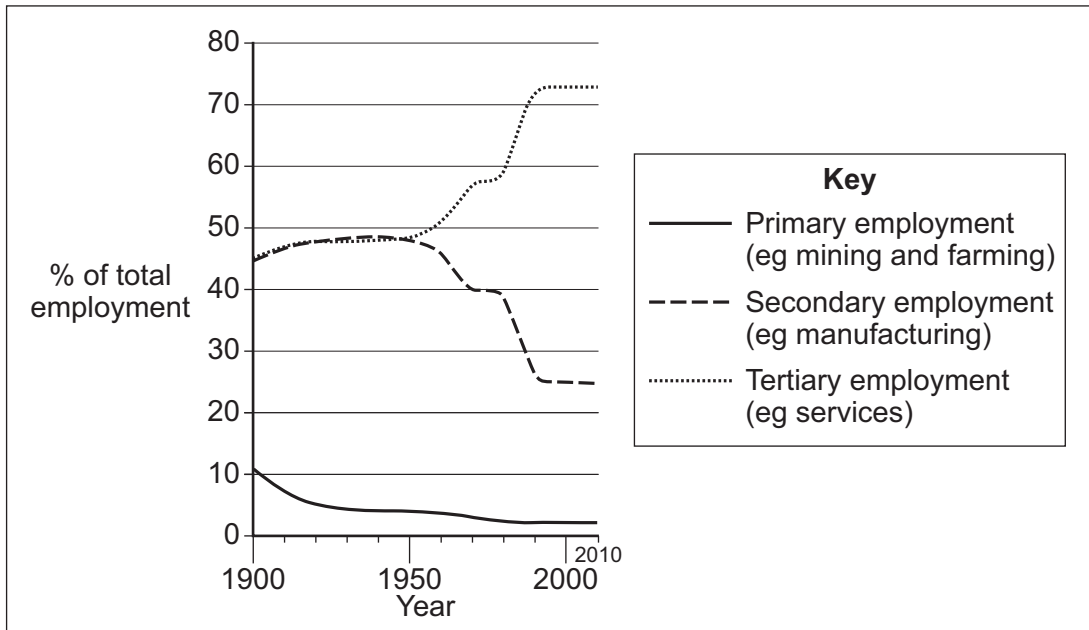
**Question 1 continues on the next page**

**Turn over ►**



1 (e) Study **Figure 5**. **Figure 5** shows changes in UK industrial structure.

**Figure 5**



1 (e) (i) Describe changes in **secondary** employment between 1950 and 2010. Use **Figure 5**.

.....

.....

.....

.....

(2 marks)

1 (e) (ii) Describe changes in **tertiary** employment between 1950 and 2010. Use **Figure 5**.

.....

.....

.....

.....

(2 marks)





**1 (g)** Explain what can be done to attract industry to an area.

.....

.....

.....

.....

.....

.....

.....

.....

.....

.....

.....

.....

.....

.....

.....

.....

.....

.....

.....

.....

.....

.....

.....

(6 marks)

*Extra space* .....

.....

.....

.....

.....

.....



**Question 1 continues on the next page**

**DO NOT WRITE ON THIS PAGE  
ANSWER IN THE SPACES PROVIDED**

**Turn over ►**



1 (h) Study Figure 6. Figure 6 shows a shopping bag made from newspaper.

Figure 6

The bag is handmade by homeless young people in Delhi, India

String handle threaded through punched holes

Double thickness newspaper is folded and glued

Young people on bicycles collect old newspapers from homes in Delhi



1 (h) (i) Complete the following paragraph. Use **Figure 6**.  
Choose the **four** correct words from the list below.

- cars
- skills
- new
- recycled
- pollution
- machinery
- poverty
- oil

The making of the shopping bag is an example of sustainable industry.

This industry relies on the ..... of local people  
rather than ..... . Bicycle transport causes no air  
..... . The bag is made from  
..... materials.

(4 marks)

1 (h) (ii) Explain why the making of the shopping bag is an example of appropriate technology.  
Use **Figure 6** and your own knowledge.

.....

.....

.....

.....

.....

.....

.....

.....

.....

.....

(4 marks)

*Extra space* .....

.....

.....

.....

.....

50

**End of Section A**

**Turn over ▶**



Answer **either** Section A (Question 1) **or** Section B (Question 2).

**Section B – Investigating Global Tourism**

Use case studies to support your answers where appropriate.

**Total for this question: 50 marks**

- 2 (a) (i)** Draw **three** arrows on the diagram below to link tourism terms with their correct meanings. One example has been drawn for you.

Tourism term	Meaning
Long-haul	Directly benefitting local people
Ecotourism	A flight of more than 3 hours
Mass tourism	Protecting the visited environment
Fair trade tourism	Many people visiting one destination
	Travelling in your own country

(3 marks)





**2 (a) (ii)** Study **Figure 7** on the insert. **Figure 7** is a photograph of a holiday destination.

Give **two** pieces of evidence from **Figure 7** which suggest that the destination shown is a mass tourism destination.

1 .....

2 .....

(2 marks)

**2 (a) (iii)** Package holidays to mass tourism destinations are very popular.

What is meant by a 'package holiday'?

.....  
.....  
.....  
.....  
.....  
.....

(3 marks)





**Question 2 continues on the next page**

**Turn over ►**



2 (a) (iv) Study **Figure 8**. **Figure 8** shows some changes to the holidays taken by people from the UK since the 1950s.

**Figure 8**

1950s	1960s	1980s	2000s
			
<p>Many people had one week's holiday in the UK, often at the seaside.</p>	<p>More people were able to travel to destinations abroad.</p>	<p>Holidays to faraway places grew in popularity.</p>	<p>More people took two or three holidays each year, more often travelling independently.</p>

Suggest how **each** of the following helps to explain the changes shown in **Figure 8**.

Leisure time .....

.....

.....

.....

Transport .....

.....

.....

.....

Wealth.....

.....

.....

.....

(6 marks)



**2 (a) (v)** Explain how increased **international travel** affects the environment.

.....

.....

.....

.....

.....

.....

.....

.....

.....

.....

.....

.....

.....

.....

.....

.....

.....

.....

.....

.....

.....

.....

.....

(6 marks)

*Extra space* .....

.....

.....

.....

.....

.....

**Question 2 continues on the next page**

**Turn over ►**



**2 (b)** Study **Figure 9**. **Figure 9** is an extract from the internet homepage of a global tourism company.

**Figure 9**

Figure 9 is not reproduced here due to third-party copyright constraints.  
Figure 9 shows a homepage from a global tourism company.

**2 (b) (i)** Tick the correct box to show whether **each** statement is **true** or **false**.  
Use **Figure 9**.

Statement	True (✓)	False (✓)
Tourists can book package holidays using a website.	<input type="checkbox"/>	<input type="checkbox"/>
Customers aged 16–64 count as adults.	<input type="checkbox"/>	<input type="checkbox"/>

(2 marks)

**2 (b) (ii)** What is meant by a 'global tourism company'?

.....

.....

.....

.....

(2 marks)



**2 (c)** Study **Figure 10** on the insert. **Figure 10** gives information about the Galapagos Islands in the Pacific Ocean.

**2 (c) (i)** Explain how management is helping to reduce the **negative impacts** of tourism on the environment in the Galapagos Islands.  
Use **Figure 10** to help you.

.....

.....

.....

.....

.....

.....

.....

.....

.....

.....

(4 marks)

*Extra space* .....

.....

.....

.....

**2 (c) (ii)** Suggest **one other** method that could be used to manage the impact of tourism.

.....

.....

.....

.....

(2 marks)

**Question 2 continues on the next page**

**Turn over ►**



**2 (d)** Explain how tourism can benefit a destination and its people.  
Use an example(s) that you have studied.

.....

.....

.....

.....

.....

.....

.....

.....

.....

.....

.....

.....

.....

.....

.....

.....

.....

.....

.....

.....

.....

.....

.....

(6 marks)

*Extra space* .....

.....

.....

.....

.....

.....



- 2 (e) (i)** Complete the sentences below.  
Circle the correct answer in **each** set of brackets.

Tourist honeypots are [ **deserted** / **popular** / **closed to the public** ].

Conflicts in tourist honeypots can arise between visitors and farmers because

[ **gates are left open** / **footpaths are maintained** / **dogs are kept on leads** ].

(2 marks)

- 2 (e) (ii)** Complete the following paragraph.  
Choose the **four** correct words from the list below.

**bins**      **buses**      **congestion**      **litter**

**private**      **public**      **signs**      **souvenirs**

More ..... transport can help to reduce .....

on roads that lead to honeypots. .... can be used to

encourage people to take their ..... home.

(4 marks)

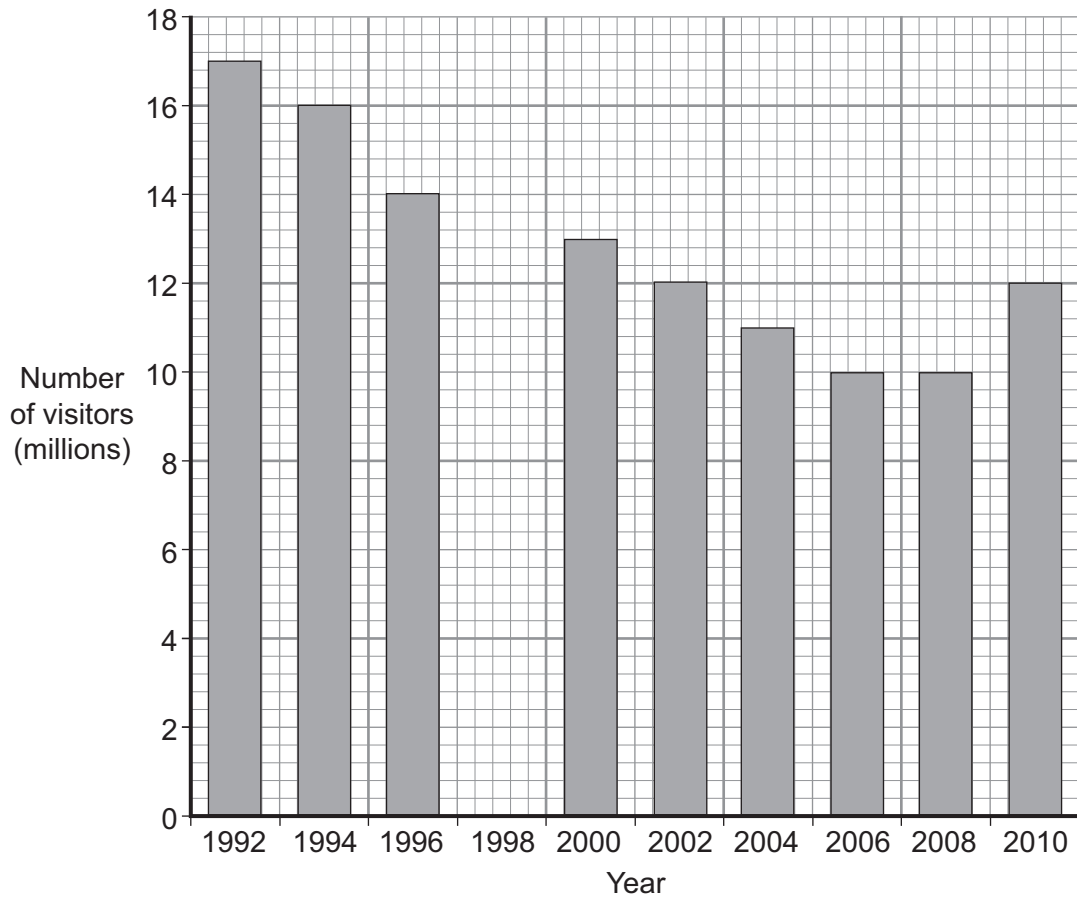
**Question 2 continues on the next page**

**Turn over ►**



2 (f) Study **Figure 11**. **Figure 11** shows the number of visitors to a UK seaside resort between 1992 and 2010.

**Figure 11**



2 (f) (i) Complete **Figure 11**.  
Use the information below.

**Number of visitors in 1998 = 13 million**

(1 mark)

2 (f) (ii) How many people visited the resort in 2008?

..... million

(1 mark)





2 (f) (iii) Describe how the number of visitors to the resort changed between 1992 and 2010.

.....  
.....  
.....  
.....

(2 marks)

2 (f) (iv) Describe the effects of the decline of tourism in an area that you have studied.

.....  
.....  
.....  
.....  
.....  
.....  
.....  
.....  
.....  
.....

(4 marks)

Extra space .....

.....  
.....  
.....  
.....

<b>50</b>

**END OF QUESTIONS**



**There are no questions printed on this page**

**DO NOT WRITE ON THIS PAGE  
ANSWER IN THE SPACES PROVIDED**



**There are no questions printed on this page**

**DO NOT WRITE ON THIS PAGE  
ANSWER IN THE SPACES PROVIDED**



**There are no questions printed on this page**

**DO NOT WRITE ON THIS PAGE  
ANSWER IN THE SPACES PROVIDED**

ACKNOWLEDGEMENT OF COPYRIGHT-HOLDERS AND PUBLISHERS

Permission to reproduce all copyright material has been applied for. In some cases, efforts to contact copyright-holders have been unsuccessful and AQA will be happy to rectify any omissions of acknowledgements in future papers if notified.

Question 1 (c) © Getty Images  
Question 1 (h) New Overseas Traders  
Question 2 (a) (iv) *Geog. GCSE* by ANNA J KING *et al* (OUP, 2006), copyright Oxford University Press 2006, reprinted by permission of Oxford University Press

Copyright © 2012 AQA and its licensors. All rights reserved.

