

Centre Number						Candidate Number				
Surname										
Other Names										
Candidate Signature										

For Examiner's Use	
Examiner's Initials	
Question	Mark
1	
2	
3	
4	
5	
6	
7	
8	
TOTAL	



General Certificate of Secondary Education
Higher Tier
June 2011

Geography (Specification B)

40352H

H

Unit 2 Hostile World

Friday 17 June 2011 9.00 am to 10.00 am

For this paper you must have:

- the insert (enclosed).
- You may use a calculator.

Time allowed

- 1 hour

Instructions

- Use black ink or black ball-point pen. You may use pencil for maps, diagrams and graphs.
- Fill in the boxes at the top of this page.
- Answer **either** Section A (Questions 1 to 4) **or** Section B (Questions 5 to 8).
- You must answer the questions in the spaces provided. Do not write outside the box around each page or on blank pages.
- Do all rough work in this book. Cross through any work you do not want to be marked.
- Use your case studies to support your answers where appropriate.

Information

- The marks for questions are shown in brackets.
- The maximum mark for this paper is 50.
- You are reminded of the need for good English and clear presentation in your answers. Where applicable, questions should be answered in continuous prose. Quality of Written Communication will be assessed in all answers.



J U N 1 1 4 0 3 5 2 H 0 1

Answer **either** Section A (Questions 1 to 4) **or** Section B (Questions 5 to 8).

Section A – Living with Natural Hazards

Use your case studies to support your answers where appropriate.

Total for this question: 10 marks

1 (a) Study **Figure 1** on the insert. **Figure 1** shows natural hazards in the United States.

Describe the distribution of natural hazards in the United States, as shown in **Figure 1**.

.....

.....

.....

.....

.....

.....

.....

.....

.....

.....

(4 marks)

1 (b) Explain the causes of **either** earthquakes **or** volcanic eruptions.

Use an example(s) from an area that you have studied.

Chosen natural hazard

.....

.....

.....

.....

.....

.....

.....

.....

.....



.....

.....

.....

.....

.....

(6 marks)

Extra space

.....

.....

.....

.....

<hr/>
10

Turn over for the next question

Turn over ►



Total for this question: 9 marks

2 (a) Study **Figure 2** on the insert. **Figure 2** gives information about Mount St. Helens, an active volcano in the United States.

2 (a) (i) Complete the paragraph below.

Mount St. Helens is located in the state of

Mount St. Helens is kilometres north east of the town of

Woodland and is 55 kilometres to the of Exit 39 on Highway 5.

(3 marks)

2 (a) (ii) From **Figure 2**, describe **one** way in which people responded to the damage caused by the eruption of Mount St. Helens.

.....

.....

.....

.....

(2 marks)



2 (b) Describe the advantages for local people of living in an area of volcanic activity.
Use **Figure 2** to help you.

.....

.....

.....

.....

.....

.....

.....

.....

.....

(4 marks)

Extra space

.....

.....

.....

9

Turn over for the next question

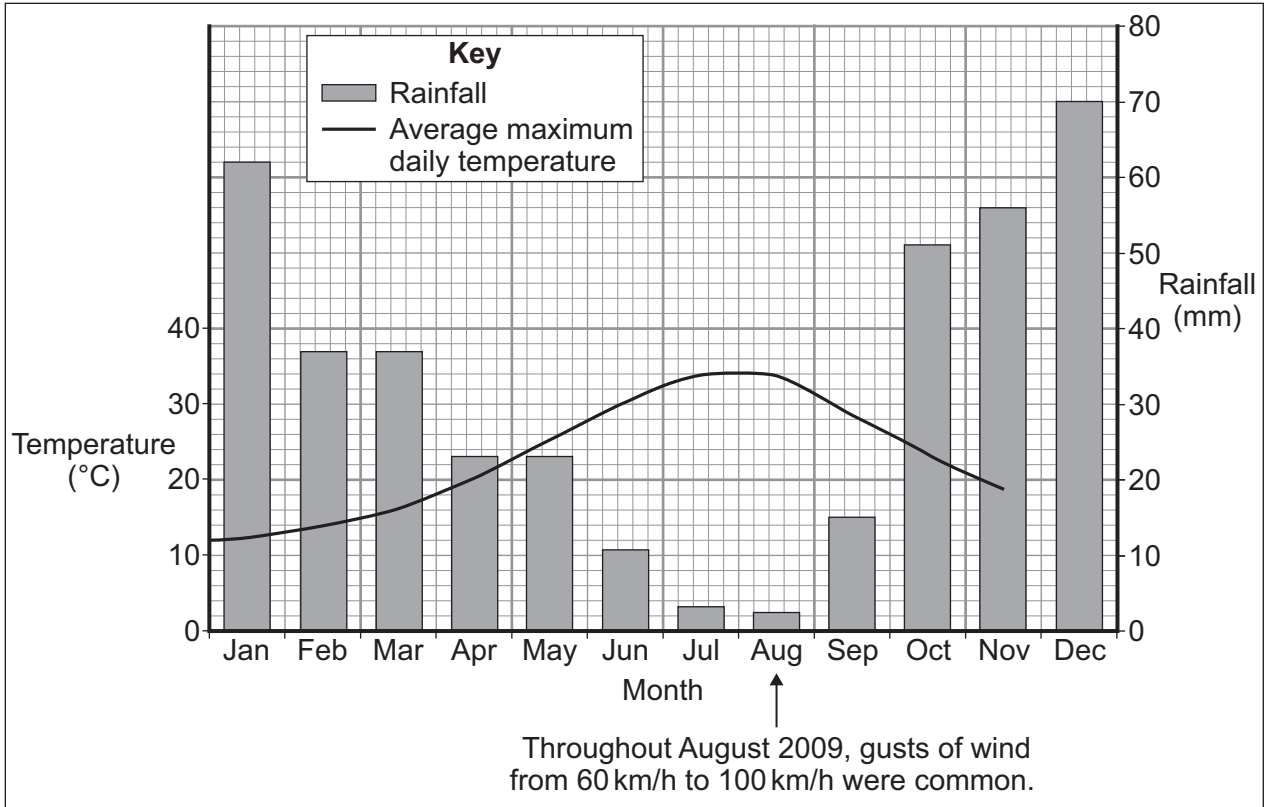
Turn over ▶



Total for this question: 15 marks

3 (a) Study **Figure 3**. **Figure 3** gives information about the climate of Greece (2009).

Figure 3



3 (a) (i) Complete **Figure 3**.

Use the information below.

Average maximum temperature in December = 14°C

(1 mark)

3 (a) (ii) Describe the patterns of temperature and rainfall shown in **Figure 3**.

.....

.....

.....

.....

.....

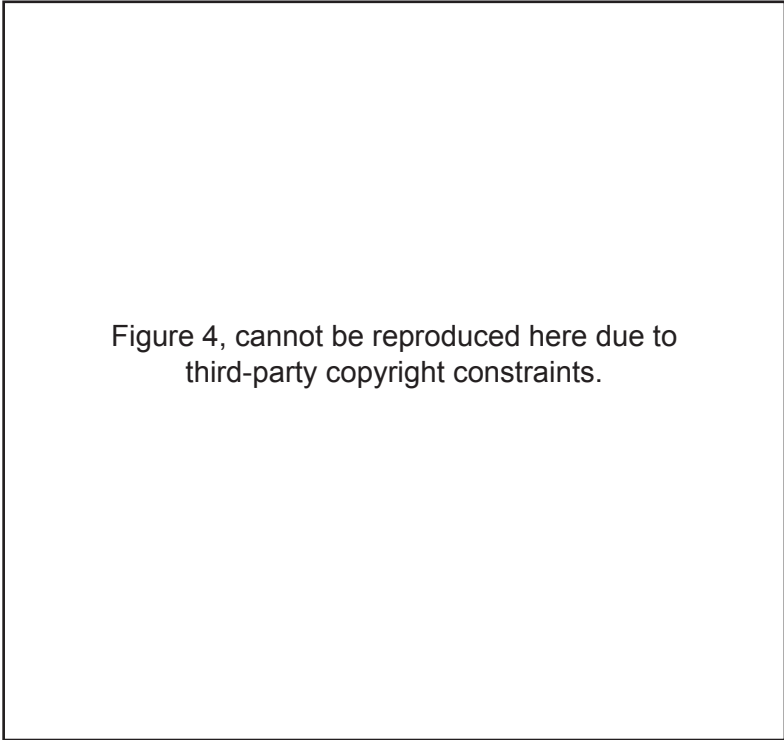
.....

(3 marks)



3 (c) Study **Figure 4**. **Figure 4** shows some methods used to reduce the damage from wildfires.

Figure 4



Explain how the damage from wildfires can be reduced.

Use **Figure 4** and your own knowledge.

.....

.....

.....

.....

.....

.....

.....

.....

.....

.....

(5 marks)



Extra space

.....

.....

.....

.....

15

Turn over for the next question

Turn over ▶



Total for this question: 16 marks

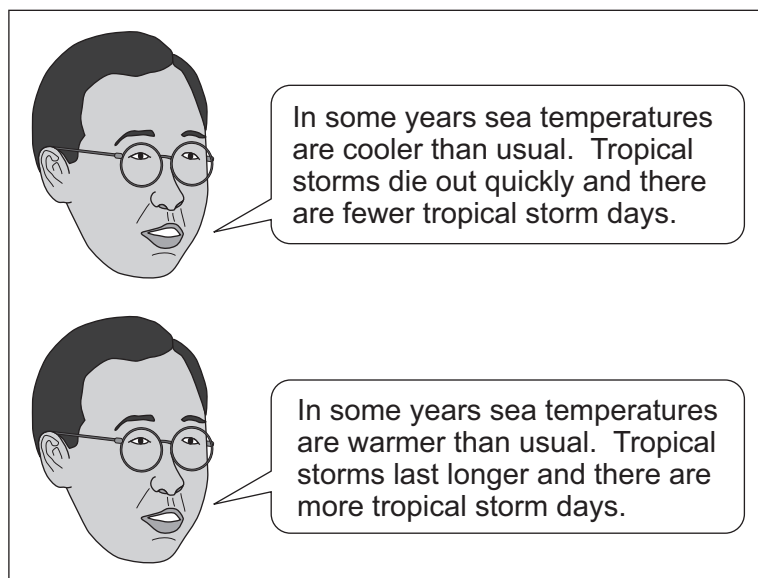
- 4 Study **Figure 5**. **Figure 5** shows the total number of tropical storm days between 1980 and 2010.

Figure 5

Figure 5, Tropical storm graph,
cannot be reproduced here due to third-party copyright constraints.

Study **Figure 6**. **Figure 6** gives information about tropical storms.

Figure 6



4 (a) What evidence is there on **Figure 5** and **Figure 6** to suggest that changes in sea temperatures occurred between 1980 and 2010?

.....

.....

.....

.....

.....

.....

.....

.....

.....

(4 marks)

Question 4 continues on the next page

Turn over ►



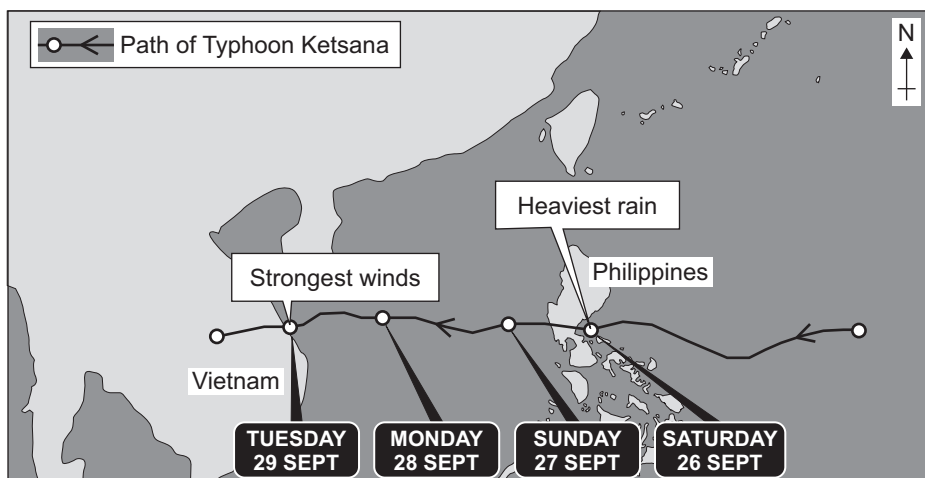
There are no questions printed on this page

**DO NOT WRITE ON THIS PAGE
ANSWER IN THE SPACES PROVIDED**



4 (b) Study **Figure 7**. **Figure 7** shows the path of a tropical storm (Typhoon Ketsana), 23 to 30 September 2009.

Figure 7



With the help of **Figure 7**, describe the effects of a tropical storm.

.....

.....

.....

.....

.....

.....

.....

.....

.....

.....

.....

(4 marks)

Extra space

.....

.....

.....

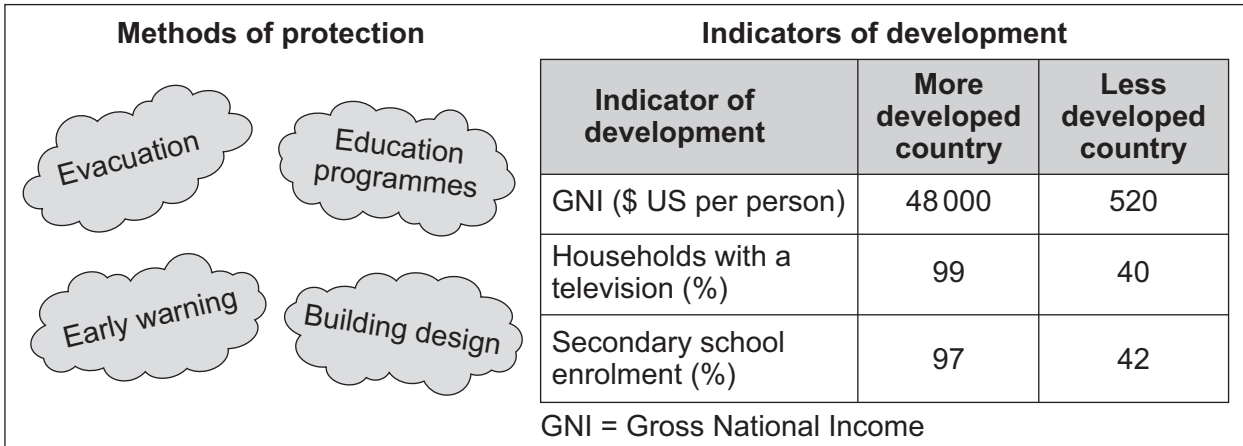
Question 4 continues on the next page

Turn over ▶



4 (c) Study **Figure 8**. **Figure 8** shows information about methods of protection from the effects of tropical storms, and indicators of development for two countries.

Figure 8



'Only more developed countries can protect themselves effectively from the damage caused by tropical storms.'

Do you agree?

Tick the box of your choice.

Yes

No

Give reasons for your choice. Use **Figure 8** and your own knowledge.

Use examples from an area(s) that you have studied.

.....
.....
.....
.....
.....
.....
.....
.....
.....
.....



.....

.....

.....

.....

.....

.....

.....

.....

(8 marks)

Extra space

.....

.....

.....

.....

.....

.....

.....

16

End of Section A

Turn over ▶



Answer **either** Section A (Questions 1 to 4) **or** Section B (Questions 5 to 8).

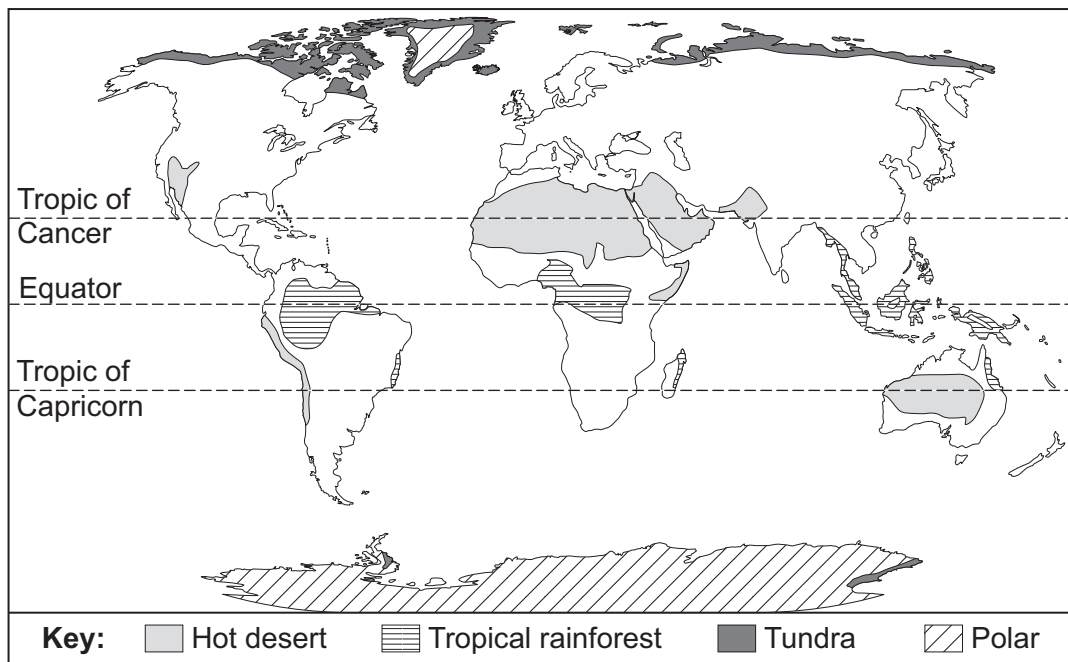
Section B – The Challenge of Extreme Environments

Use your case studies to support your answers where appropriate.

Total for this question: 10 marks

5 (a) Study **Figure 9**. **Figure 9** shows extreme environments in different parts of the world.

Figure 9



Describe the distribution of the extreme environments shown in **Figure 9**.

.....

.....

.....

.....

.....

.....

.....

.....

(4 marks)



Total for this question: 9 marks

6 (a) Study **Figure 10** on the insert. **Figure 10** shows the area of sea ice in the Arctic in 2004 and 2007.

6 (a) (i) Complete the paragraph below.

On 16 September 2007 the area of Arctic sea ice was much

..... than on 16 September 2004. The area of sea ice on

16 September 2007 was million square kilometres.

In September 2007 many areas of sea were for the first

time since satellite records began in 1979. (3 marks)

6 (a) (ii) Suggest **one** reason for the change to the area of sea ice shown in **Figure 10**.

.....
.....
.....
.....

(2 marks)

6 (b) Describe the environmental problems that could be caused by the change to the area of sea ice shown in **Figure 10**.

.....
.....
.....
.....
.....
.....
.....
.....

(4 marks)



Extra space

.....

.....

.....

9

Turn over for the next question

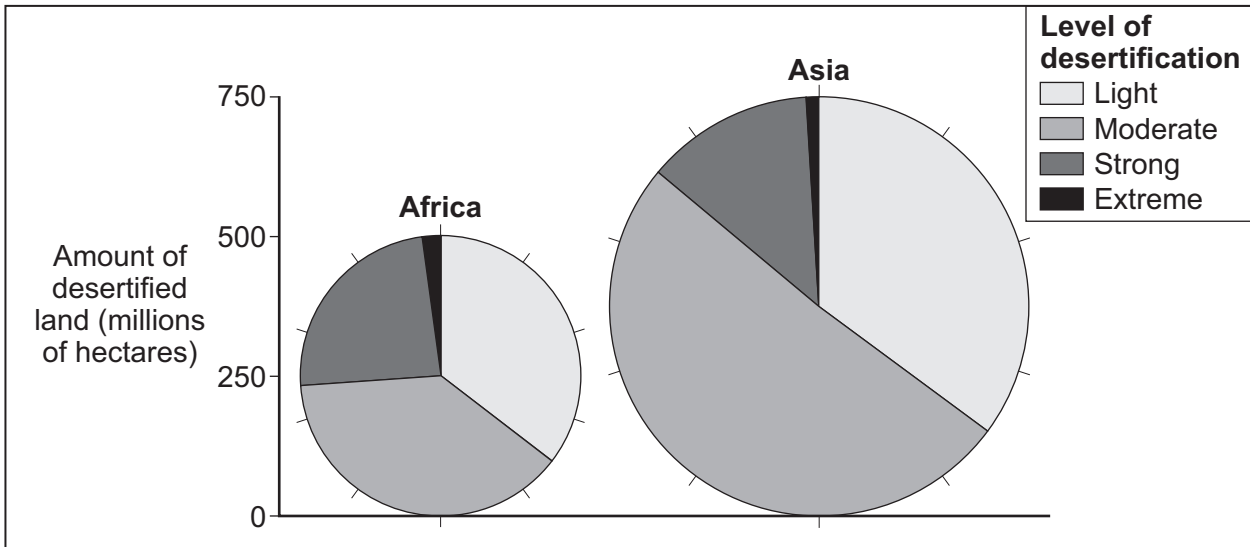
Turn over ▶



Total for this question: 13 marks

7 (a) Study **Figure 11**. **Figure 11** shows the amount of desertified land and the level of desertification in two continents.

Figure 11



Describe the differences between Africa and Asia shown on **Figure 11**.

.....

.....

.....

.....

.....

.....

.....

.....

.....

(4 marks)



7 (b) Study **Figure 12** on the insert. **Figure 12** shows an area where desertification is taking place.

The sketch below is based on **Figure 12**.



Suggest why desertification is taking place in some areas.

Use **Figure 12** and your own knowledge.

.....

.....

.....

.....

.....

.....

.....

.....

(4 marks)

Extra space

.....

.....

.....

Turn over ►



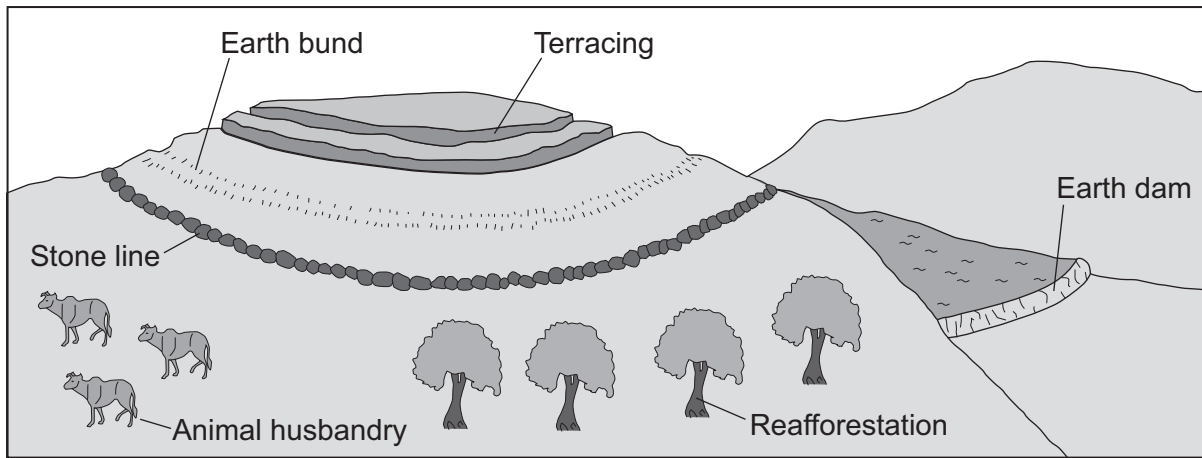
There are no questions printed on this page

**DO NOT WRITE ON THIS PAGE
ANSWER IN THE SPACES PROVIDED**



7 (c) Study Figure 13. Figure 13 shows some ways in which areas at risk from desertification can be managed.

Figure 13



Explain how areas at risk from desertification can be managed.

Use Figure 13 and your own knowledge.

.....

.....

.....

.....

.....

.....

.....

.....

.....

.....

.....

(5 marks)

Extra space

.....

.....

.....

.....

Turn over ▶



Total for this question: 18 marks

8 (a) Study **Figure 14**. **Figure 14** shows a climate graph for an area of tropical rainforest.

Figure 14

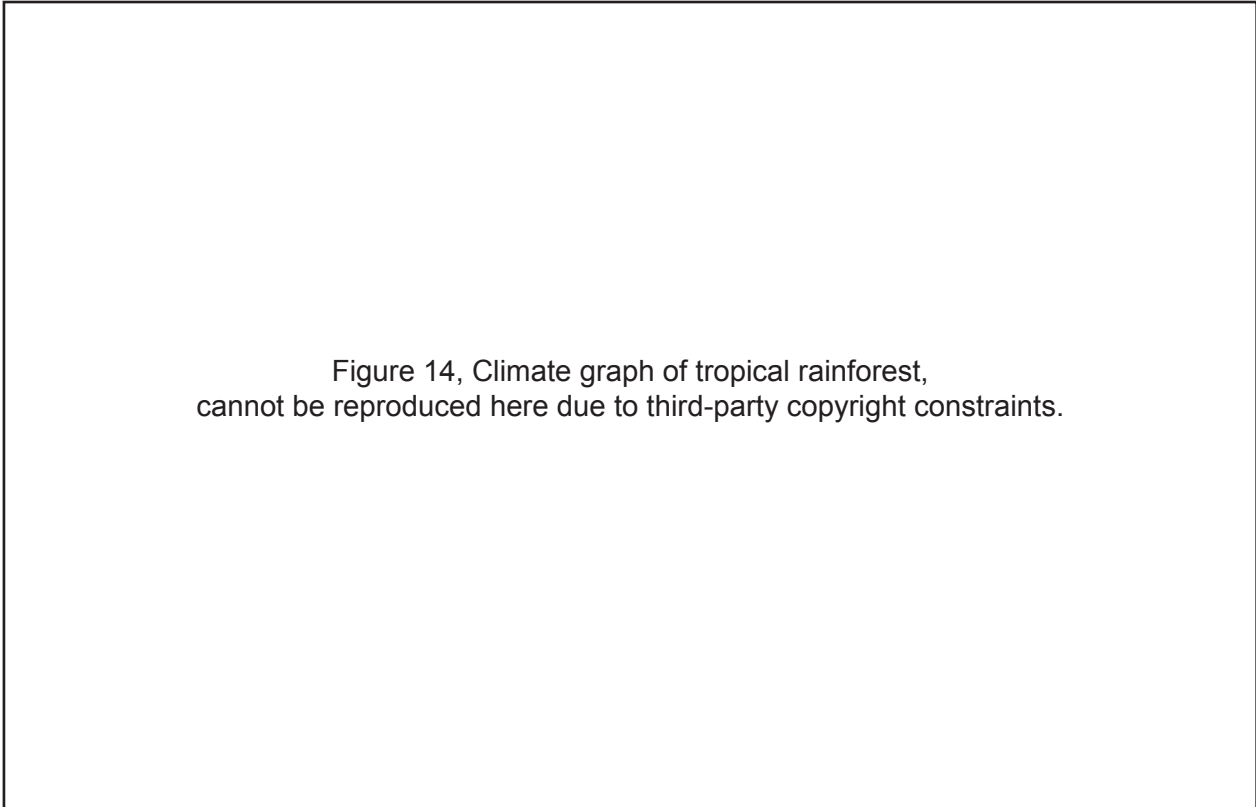


Figure 14, Climate graph of tropical rainforest,
cannot be reproduced here due to third-party copyright constraints.

8 (a) (i) Complete **Figure 14**.

Use the information below.

Average monthly temperature in December = 26°C

(1 mark)

8 (a) (ii) Describe the patterns of rainfall and temperature shown in **Figure 14**.

.....

.....

.....

.....

.....

.....

(3 marks)



8 (b) Explain the relationship between climate and tropical rainforest vegetation.

Use **Figure 14** and your own knowledge.

.....

.....

.....

.....

.....

.....

.....

.....

.....

.....

.....

.....

.....

.....

.....

.....

.....

.....

.....

.....

.....

.....

(6 marks)

Extra space

.....

.....

.....

.....

.....

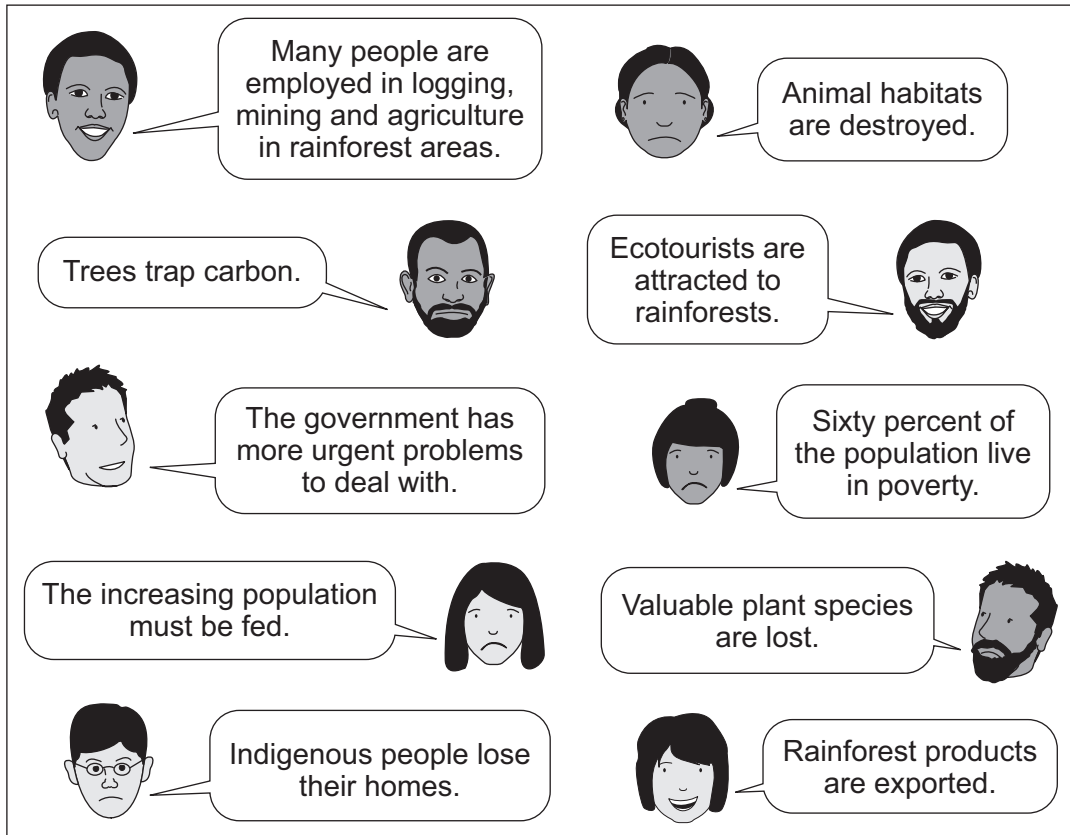
Question 8 continues on the next page

Turn over ▶



8 (c) Study **Figure 15**. **Figure 15** shows some statements about deforestation in a less developed country.

Figure 15



'Removal of tropical rainforest must be stopped.'

Do you agree?

Tick the box of your choice.

Yes

 No

Give reasons for your choice. Use **Figure 15** and your own knowledge.

.....

.....

.....

.....

.....



.....

.....

.....

.....

.....

.....

.....

.....

.....

.....

.....

.....

.....

.....

.....

.....

.....

.....

.....

.....

.....

.....

.....

(8 marks)

Extra space

.....

.....

.....

.....

.....

.....

.....

.....

.....

.....

<hr/>
18

END OF QUESTIONS



There are no questions printed on this page

**DO NOT WRITE ON THIS PAGE
ANSWER IN THE SPACES PROVIDED**

ACKNOWLEDGEMENT OF COPYRIGHT-HOLDERS AND PUBLISHERS

Permission to reproduce all copyright material has been applied for. In some cases, efforts to contact copyright-holders have been unsuccessful and AQA will be happy to rectify any omissions of acknowledgements in future papers if notified.

- Figure 3: BBC Weather
Figure 4: (top left) www.smokeybear.com
Figure 7: © NASA
Figure 15: CHRIS C. PARK, *Tropical Rainforests*, Routledge, 1982

Copyright © 2011 AQA and its licensors. All rights reserved.

